



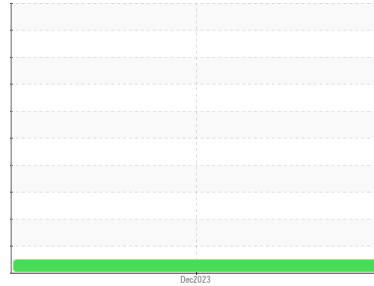
OIL ANALYSIS REPORT

Sample Rating Trend

NORMAL



Area
[521652]
 Machine Id
1960762
 Component
Unknown Component
 Fluid
NOT GIVEN (--- GAL)



DIAGNOSIS

Recommendation

This is a baseline read-out on the submitted sample.

Wear

{not applicable}

Contaminants

ISO Cleanliness Code (ISO 4406:1999): 22/19/11;
 Cumulative particle counts >4µm = 37800, >6µm = 2973, >14µm = 14, >21µm = 2, >38µm = 0, >71µm = 0.

Oil Condition

{not applicable}

SAMPLE INFORMATION

	method	limit/base	current	history1	history2
Sample Number	Client Info		PP	---	---
Sample Date	Client Info		14 Dec 2023	---	---
Machine Age	hrs	Client Info	0	---	---
Oil Age	hrs	Client Info	0	---	---
Oil Changed	Client Info		N/A	---	---
Sample Status			NORMAL	---	---

CONTAMINATION

	method	limit/base	current	history1	history2
Water	WC Method		NEG	---	---

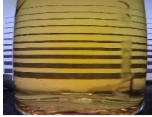

FLUID CLEANLINESS

	method	limit/base	current	history1	history2
Particles >4µm	ASTM D7647	>5000	37800	---	---
Particles >6µm	ASTM D7647	>1300	2973	---	---
Particles >14µm	ASTM D7647	>160	14	---	---
Particles >21µm	ASTM D7647	>40	2	---	---
Particles >38µm	ASTM D7647	>10	0	---	---
Particles >71µm	ASTM D7647	>3	0	---	---
Oil Cleanliness	ISO 4406 (c)	>19/17/14	22/19/11	---	---

VISUAL

	method	limit/base	current	history1	history2	
White Metal	scalar	Visual*	NONE	NONE	---	---
Yellow Metal	scalar	Visual*	NONE	NONE	---	---
Precipitate	scalar	Visual*	NONE	NONE	---	---
Silt	scalar	Visual*	NONE	NONE	---	---
Debris	scalar	Visual*	NONE	NONE	---	---
Sand/Dirt	scalar	Visual*	NONE	NONE	---	---
Appearance	scalar	Visual*	NORML	NORML	---	---
Odor	scalar	Visual*	NORML	NORML	---	---

SAMPLE IMAGES

	method	limit/base	current	history1	history2
Color				no image	no image
Bottom				no image	no image



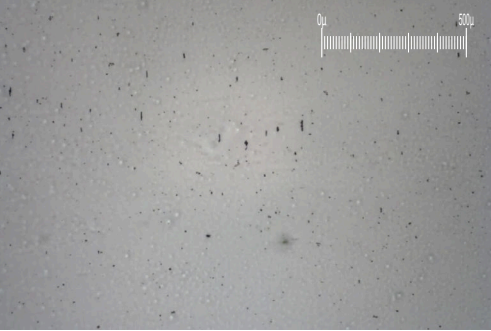
FERROGRAPHY REPORT

Area
[521652]
 Machine Id
1960762
 Component
Unknown Component
 Fluid
NOT GIVEN (--- GAL)

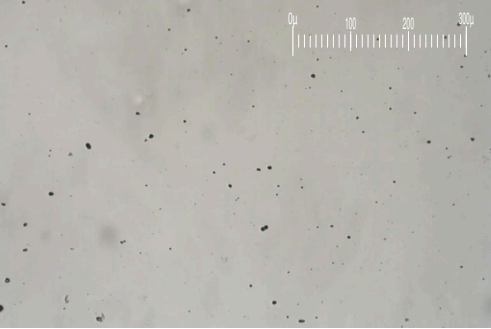
Magn: 200x Illum: BC



Magn: 50x Illum: RW



Magn: 100x Illum: RW



FERROGRAPHY	method	limit/base	current	history1	history2
Ferrous Rubbing	Scale 0-10 ASTM D7684*		2		
Ferrous Sliding	Scale 0-10 ASTM D7684*				
Ferrous Cutting	Scale 0-10 ASTM D7684*				
Ferrous Rolling	Scale 0-10 ASTM D7684*		1		
Ferrous Break-in	Scale 0-10 ASTM D7684*				
Ferrous Spheres	Scale 0-10 ASTM D7684*				
Ferrous Black Oxides	Scale 0-10 ASTM D7684*		1		
Ferrous Red Oxides	Scale 0-10 ASTM D7684*				
Ferrous Corrosive	Scale 0-10 ASTM D7684*				
Ferrous Other	Scale 0-10 ASTM D7684*				
Nonferrous Rubbing	Scale 0-10 ASTM D7684*				
Nonferrous Sliding	Scale 0-10 ASTM D7684*				
Nonferrous Cutting	Scale 0-10 ASTM D7684*				
Nonferrous Rolling	Scale 0-10 ASTM D7684*				
Nonferrous Other	Scale 0-10 ASTM D7684*				
Carbonaceous Material	Scale 0-10 ASTM D7684*				
Lubricant Degradation	Scale 0-10 ASTM D7684*				
Sand/Dirt	Scale 0-10 ASTM D7684*		1		
Fibres	Scale 0-10 ASTM D7684*				
Spheres	Scale 0-10 ASTM D7684*				
Other	Scale 0-10 ASTM D7684*		2		

WEAR

{not applicable}