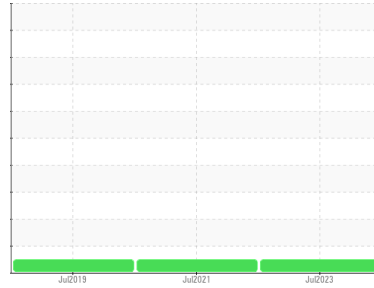




# OIL ANALYSIS REPORT

Sample Rating Trend



**NORMAL**



Machine Id  
**Silo #1 Gate 004 A (S/N 0-37100-004A)**

Component  
**Gearbox**

Fluid  
**FUCHS RENOLIN CLP ISO 220 (--- GAL)**

## DIAGNOSIS

### Recommendation

Resample at the next service interval to monitor.  
NOTE: Please provide information regarding reservoir capacity, filter type and micron rating with next sample.

### Wear

All component wear rates are normal.

### Contamination

There is no indication of any contamination in the oil.

### Fluid Condition

The condition of the oil is acceptable for the time in service.

SAMPLE INFORMATION		method	limit/base	current	history1	history2
Sample Number	Client Info			<b>WC0831849</b>	WC0599833	WC0365378
Sample Date	Client Info			<b>10 Jul 2023</b>	05 Jul 2021	10 Jul 2019
Machine Age	hrs	Client Info		<b>0</b>	0	0
Oil Age	hrs	Client Info		<b>0</b>	0	0
Oil Changed		Client Info		<b>N/A</b>	N/A	N/A
Sample Status				<b>NORMAL</b>	NORMAL	NORMAL

CONTAMINATION		method	limit/base	current	history1	history2
Water	WC Method		>0.2	<b>NEG</b>	NEG	NEG

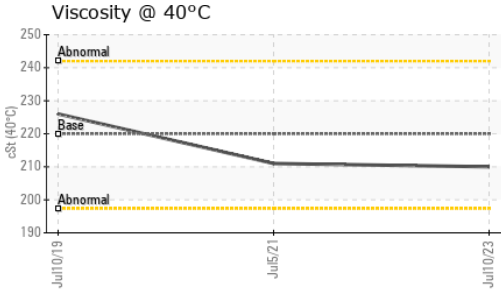
WEAR METALS		method	limit/base	current	history1	history2
Iron	ppm	ASTM D5185(m)	>200	<b>&lt;1</b>	2	<1
Chromium	ppm	ASTM D5185(m)	>15	<b>0</b>	<1	0
Nickel	ppm	ASTM D5185(m)	>15	<b>0</b>	<1	0
Titanium	ppm	ASTM D5185(m)		<b>0</b>	0	0
Silver	ppm	ASTM D5185(m)		<b>&lt;1</b>	0	0
Aluminum	ppm	ASTM D5185(m)	>25	<b>&lt;1</b>	<1	0
Lead	ppm	ASTM D5185(m)	>100	<b>&lt;1</b>	0	<1
Copper	ppm	ASTM D5185(m)	>200	<b>&lt;1</b>	<1	0
Tin	ppm	ASTM D5185(m)	>25	<b>0</b>	0	0
Antimony	ppm	ASTM D5185(m)	>5	<b>0</b>	0	0
Vanadium	ppm	ASTM D5185(m)		<b>0</b>	0	0
Beryllium	ppm	ASTM D5185(m)		<b>0</b>	0	0
Cadmium	ppm	ASTM D5185(m)		<b>0</b>	0	<1

ADDITIVES		method	limit/base	current	history1	history2
Boron	ppm	ASTM D5185(m)		<b>2</b>	3	<1
Barium	ppm	ASTM D5185(m)		<b>2</b>	2	1
Molybdenum	ppm	ASTM D5185(m)		<b>0</b>	<1	<1
Manganese	ppm	ASTM D5185(m)		<b>0</b>	<1	<1
Magnesium	ppm	ASTM D5185(m)		<b>2</b>	8	1
Calcium	ppm	ASTM D5185(m)		<b>9</b>	9	9
Phosphorus	ppm	ASTM D5185(m)		<b>289</b>	312	275
Zinc	ppm	ASTM D5185(m)		<b>5</b>	5	5
Sulfur	ppm	ASTM D5185(m)		<b>9444</b>	9649	10575
Lithium	ppm	ASTM D5185(m)		<b>&lt;1</b>	<1	0

CONTAMINANTS		method	limit/base	current	history1	history2
Silicon	ppm	ASTM D5185(m)	>50	<b>5</b>	17	2
Sodium	ppm	ASTM D5185(m)		<b>1</b>	1	<1
Potassium	ppm	ASTM D5185(m)	>20	<b>0</b>	<1	0



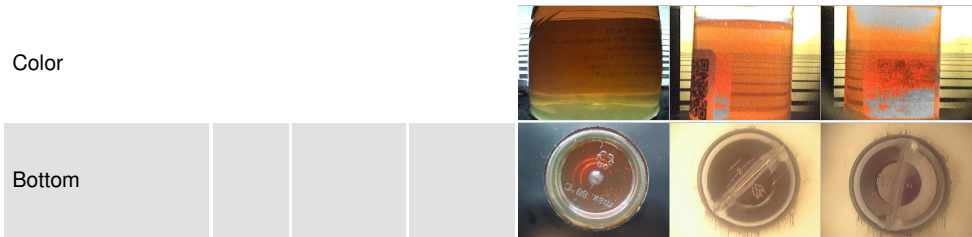
# OIL ANALYSIS REPORT



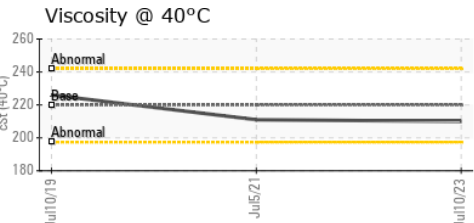
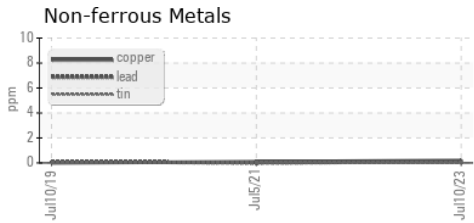
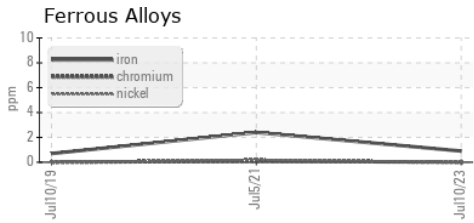
VISUAL	method	limit/base	current	history1	history2
White Metal	scalar	Visual*	NONE	NONE	NONE
Yellow Metal	scalar	Visual*	NONE	NONE	NONE
Precipitate	scalar	Visual*	NONE	NONE	NONE
Silt	scalar	Visual*	NONE	NONE	NONE
Debris	scalar	Visual*	NONE	NONE	VLITE
Sand/Dirt	scalar	Visual*	NONE	NONE	NONE
Appearance	scalar	Visual*	NORML	NORML	NORML
Odor	scalar	Visual*	NORML	NORML	NORML
Emulsified Water	scalar	Visual*	>0.2	NEG	NEG
Free Water	scalar	Visual*		NEG	NEG

FLUID PROPERTIES	method	limit/base	current	history1	history2	
Visc @ 40°C	cSt	ASTM D7279(m)	220	<b>210</b>	211	226

SAMPLE IMAGES	method	limit/base	current	history1	history2
---------------	--------	------------	---------	----------	----------



## GRAPHS



**Laboratory** : WearCheck - C8-1175 Appleby Line, Burlington, ON L7L 5H9  
**Sample No.** : WC0831849      **Received** : 19 Dec 2023  
**Lab Number** : **02604247**      **Diagnosed** : 19 Dec 2023  
**Unique Number** : 5697332      **Diagnostician** : Wes Davis  
**Test Package** : IND 1

**Ontario Power Generation**  
 ATIKOKAN T.G.S., BOX 1900  
 ATIKOKAN, ON  
 CA P0T 1C0  
 Contact: Dale Anthony  
 dale.anthony@opg.com  
 T:  
 F: (807)597-1198

To discuss this sample report, contact Customer Service at 1-800-268-2131.  
 Test denoted (\*) outside scope of accreditation, (m) method modified, (e) tested at external lab.  
 Validity of results and interpretation are based on the sample and information as supplied.