



# OIL ANALYSIS REPORT

Sample Rating Trend

**NORMAL**



Machine Id  
**1369M**

Component  
**Diesel Fuel**

Fluid  
**No.2 DIESEL FUEL (ULTRALOW SULPHUR) (--- GAL)**

## DIAGNOSIS

### Recommendation

Please contact your representative for information regarding the proper sampling kits for your service.

### Corrosion

{not applicable}

### Contaminants

There is no indication of any contamination in the component(unconfirmed).

### Fuel Condition

Not enough sample submitted to determine fuel condition and/or classification.

## SAMPLE INFORMATION

method	limit/base	current	history1	history2
Sample Number	Client Info	<b>WC0853049</b>	---	---
Sample Date	Client Info	<b>13 Dec 2023</b>	---	---
Machine Age	kms	Client Info	<b>138005</b>	---
Sample Status			<b>NORMAL</b>	---

## WEAR METALS

method	limit/base	current	history1	history2		
Iron	ppm	ASTM D5185(m)	>2	<1	---	---
Chromium	ppm	ASTM D5185(m)	>2	0	---	---
Nickel	ppm	ASTM D5185(m)	>2	0	---	---
Titanium	ppm	ASTM D5185(m)	>2	0	---	---
Silver	ppm	ASTM D5185(m)	>2	0	---	---
Aluminum	ppm	ASTM D5185(m)	>2	0	---	---
Lead	ppm	ASTM D5185(m)	>2	0	---	---
Copper	ppm	ASTM D5185(m)	>2	0	---	---
Tin	ppm	ASTM D5185(m)	>2	0	---	---
Antimony	ppm	ASTM D5185(m)	>2	0	---	---
Vanadium	ppm	ASTM D5185(m)		0	---	---
Beryllium	ppm	ASTM D5185(m)	>2	0	---	---
Cadmium	ppm	ASTM D5185(m)		0	---	---

## ADDITIVES

method	limit/base	current	history1	history2		
Boron	ppm	ASTM D5185(m)	2	0	---	---
Barium	ppm	ASTM D5185(m)	2	0	---	---
Molybdenum	ppm	ASTM D5185(m)	2	0	---	---
Manganese	ppm	ASTM D5185(m)		0	---	---
Magnesium	ppm	ASTM D5185(m)	2	0	---	---
Calcium	ppm	ASTM D5185(m)	2	0	---	---
Phosphorus	ppm	ASTM D5185(m)	2	<1	---	---
Zinc	ppm	ASTM D5185(m)	2	0	---	---
Sulfur	ppm	ASTM D5185(m)	10	13	---	---
Lithium	ppm	ASTM D5185(m)		<1	---	---

## CONTAMINANTS

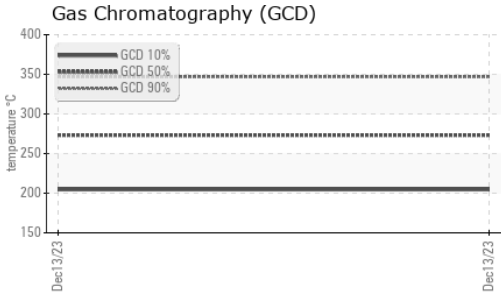
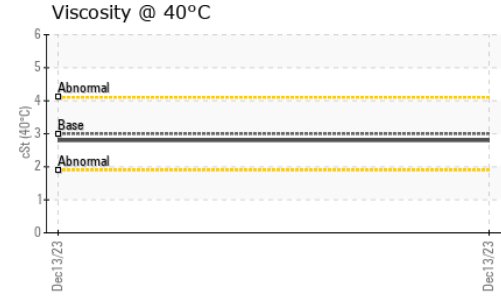
method	limit/base	current	history1	history2		
Silicon	ppm	ASTM D5185(m)	>10	0	---	---
Sodium	ppm	ASTM D5185(m)	>5	0	---	---
Potassium	ppm	ASTM D5185(m)	>20	<1	---	---

## VISUAL

method	limit/base	current	history1	history2		
White Metal	scalar	Visual*	NONE	NONE	---	---
Yellow Metal	scalar	Visual*	NONE	NONE	---	---
Precipitate	scalar	Visual*	NONE	NONE	---	---
Silt	scalar	Visual*	NONE	NONE	---	---
Debris	scalar	Visual*	NONE	NONE	---	---
Sand/Dirt	scalar	Visual*	NONE	NONE	---	---
Appearance	scalar	Visual*	NORML	NORML	---	---
Odor	scalar	Visual*	NORML	NORML	---	---
Emulsified Water	scalar	Visual*	>0.05	NEG	---	---
Free Water	scalar	Visual*		NEG	---	---



# OIL ANALYSIS REPORT



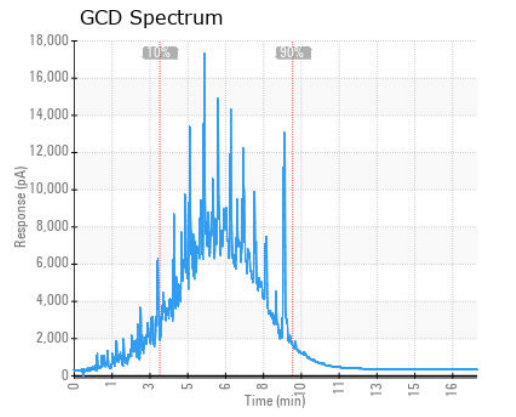
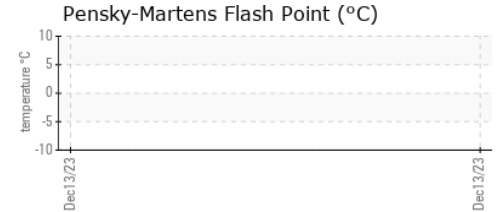
FLUID PROPERTIES		method	limit/base	current	history1	history2
Visc @ 40°C	cSt	ASTM D7279(m)	3.0	<b>2.8</b>	---	---

SIMULATED DISTILLATION (GCD)		method	limit/base	current	history1	history2
(GCD) % < 335°C	°C	ASTM D2887*		<b>86.34</b>	---	---
(GCD) Initial Boiling Point	°C	ASTM D2887*		<b>122.0</b>	---	---
(GCD) 5% Distillation Point	°C	ASTM D2887*		<b>182.7</b>	---	---
(GCD) 10% Distillation Point	°C	ASTM D2887*		<b>204.6</b>	---	---
(GCD) 20% Distillation Point	°C	ASTM D2887*		<b>230.2</b>	---	---
(GCD) 30% Distillation Point	°C	ASTM D2887*		<b>246.3</b>	---	---
(GCD) 40% Distillation Point	°C	ASTM D2887*		<b>259.5</b>	---	---
(GCD) 50% Distillation Point	°C	ASTM D2887*		<b>273.2</b>	---	---
(GCD) 60% Distillation Point	°C	ASTM D2887*		<b>287.5</b>	---	---
(GCD) 70% Distillation Point	°C	ASTM D2887*		<b>302.7</b>	---	---
(GCD) 80% Distillation Point	°C	ASTM D2887*		<b>319.4</b>	---	---
(GCD) 90% Distillation Point	°C	ASTM D2887*		<b>346.8</b>	---	---
(GCD) FBP% Distillation Point	°C	ASTM D2887*		<b>502.7</b>	---	---

## SAMPLE IMAGES

	method	limit/base	current	history1	history2
Color				no image	no image
Bottom				no image	no image

## GRAPHS



**Laboratory** : WearCheck - C8-1175 Appleby Line, Burlington, ON L7L 5H9  
**Sample No.** : WC0853049 **Recieved** : 19 Dec 2023  
**Lab Number** : **02604266** **Diagnosed** : 20 Dec 2023  
**Unique Number** : 5697351 **Diagnostician** : Kevin Marson  
**Test Package** : MOB 1 ( Additional Tests: GC-PercFuel, GCD )

**Rush Truck Centres**  
 8240 WOODBINE AVE  
 MARKHAM, ON  
 CA L3R 2N8  
 Contact: Fitzroy Gabbidon  
 FGabbidon@rushtruckcentres.ca  
 T:  
 F:

To discuss this sample report, contact Customer Service at 1-800-268-2131.  
 Test denoted (\*) outside scope of accreditation, (m) method modified, (e) tested at external lab.  
 Validity of results and interpretation are based on the sample and information as supplied.