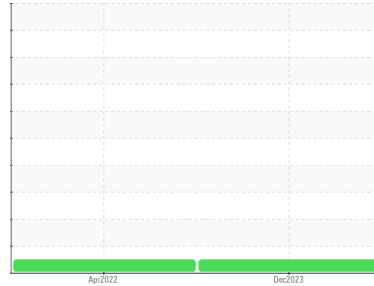




GREASE ANALYSIS

Sample Rating Trend

NORMAL



Machine Id
APM 2 - Drive Room Main Bullwheel - Evac Side (S/N 2DMBE)
 Component
Grease
 Fluid
MOBIL SHC GREASE 460 WT (--- GAL)

DIAGNOSIS

Recommendation

Resample at the next service interval to monitor.

Wear

All component wear rates are normal.

Grease Condition

The condition of the grease is acceptable for the time in service.

Contaminants

There is no indication of any contamination in the grease.

SAMPLE INFORMATION		method	limit/base	current	history1	history2
Sample Number		Client Info		WC	WC0643411	---
Sample Date		Client Info		18 Dec 2023	29 Apr 2022	---
Machine Age	days	Client Info		6220	44000	---
Grease Age	days	Client Info		0	0	---
Grease Serviced		Client Info		Not Chngd	Not Chngd	---
Sample Status				NORMAL	NORMAL	---

CONTAMINATION		method	limit/base	current	history1	history2
Water		WC Method	>0.1	NEG	NEG	---

WEAR METALS		method	limit/base	current	history1	history2
PQ		ASTM D8184*	>200	0	0	---
Iron	ppm	ASTM D5185(m)	>250	2	2	---
Chromium	ppm	ASTM D5185(m)	>10	0	0	---
Nickel	ppm	ASTM D5185(m)	>5	<1	0	---
Cadmium	ppm	ASTM D5185(m)		0	0	---
Titanium	ppm	ASTM D5185(m)		0	0	---
Vanadium	ppm	ASTM D5185(m)		0	0	---
Lead	ppm	ASTM D5185(m)	>25	<1	<1	---
Copper	ppm	ASTM D5185(m)	>75	2	3	---
Tin	ppm	ASTM D5185(m)	>5	0	<1	---
Silver	ppm	ASTM D5185(m)	>5	0	0	---

ADDITIVES		method	limit/base	current	history1	history2
Boron	ppm	ASTM D5185(m)		0	<1	---
Magnesium	ppm	ASTM D5185(m)		<1	<1	---
Manganese	ppm	ASTM D5185(m)		0	0	---
Molybdenum	ppm	ASTM D5185(m)		0	0	---
Phosphorus	ppm	ASTM D5185(m)		64	85	---
Zinc	ppm	ASTM D5185(m)		92	131	---
Antimony	ppm	ASTM D5185(m)		0	<1	---

THICKENER/SOAP		method	limit/base	current	history1	history2
Aluminum	ppm	ASTM D5185(m)		<1	<1	---
Barium	ppm	ASTM D5185(m)		0	<1	---
Calcium	ppm	ASTM D5185(m)		2	2	---
Sodium	ppm	ASTM D5185(m)		2	<1	---
Lithium	ppm	ASTM D5185(m)		622	635	---
Sulfur	ppm	ASTM D5185(m)		723	661	---

CONTAMINANTS		method	limit/base	current	history1	history2
Silicon	ppm	ASTM D5185(m)	>150	<1	1	---
Potassium	ppm	ASTM D5185(m)		<1	<1	---

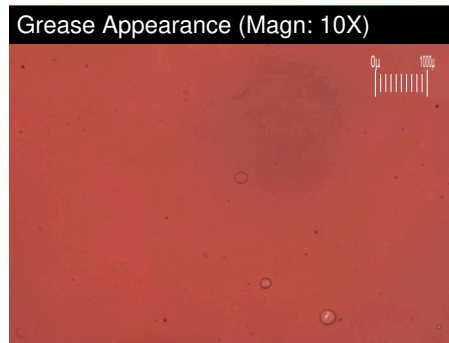
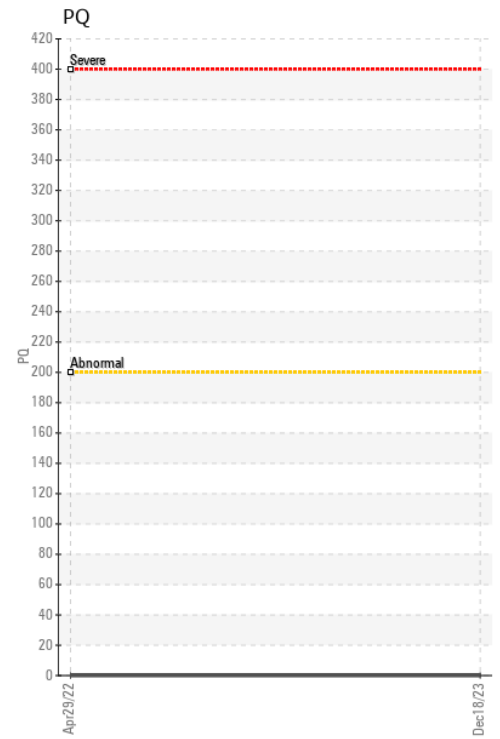
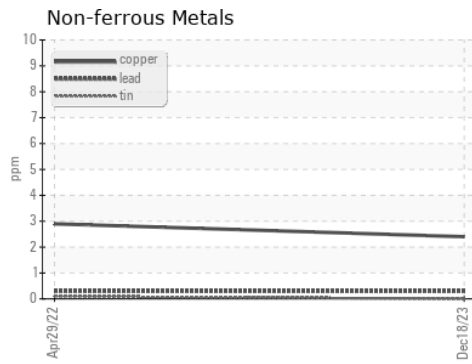
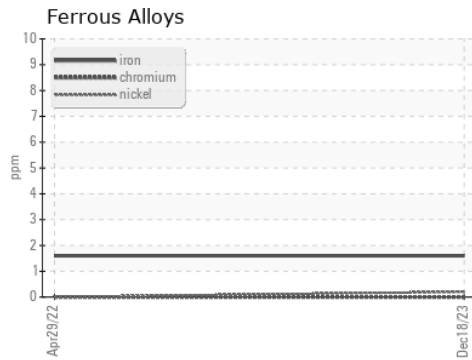
GREASE CONDITION		method	limit/base	current	history1	history2
Grease Color		Visual*	Red	Red	Red	---
Texture		In-house*		Short fiber	Long fiber	---
NLGI Consistency	NLGI Scale	SKF Method*	1.5	2	2-3	---

GREASE ANALYSIS



SAMPLE IMAGES	method	limit/base	current	history1	history2
Color					no image
Bottom					no image
PrtFilter					no image

GRAPHS



Laboratory : WearCheck - C8-1175 Appleby Line, Burlington, ON L7L 5H9
Sample No. : WC **Recieved** : 19 Dec 2023
Lab Number : 02604279 **Diagnosed** : 21 Dec 2023
Unique Number : 5697364 **Diagnostician** : Bill Quesnel
Test Package : GRS 1 (Additional Tests: BottomAnalysis)

DCC DOPPELMAYR CABLE CAR
 6100 VISCOUNT RD, GENERAL DELIVERIES 2ND FLOOR
 MISSISSAUGA, ON
 CA L9V 0A1
 Contact: Dave Simpson
 dsimpson@dccooperations.com
 T: (905)612-8630
 F: (905)612-0626

To discuss this sample report, contact Customer Service at 1-800-268-2131.
 Test denoted (*) outside scope of accreditation, (m) method modified, (e) tested at external lab.
 Validity of results and interpretation are based on the sample and information as supplied.