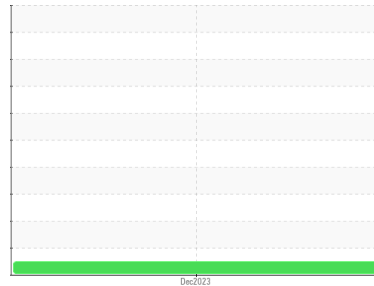




# OIL ANALYSIS REPORT

Sample Rating Trend



**NORMAL**



Machine Id  
**SENTRON LD 5000**

Component  
**New (Unused) Oil**

Fluid  
**PETRO CANADA SENTRON LD 5000 (--- GAL)**

## DIAGNOSIS

### Recommendation

This is a baseline read-out on the submitted sample.

### Wear

{not applicable}

### Contamination

{not applicable}

### Fluid Condition

{not applicable}

## SAMPLE INFORMATION

	method	limit/base	current	history1	history2
Sample Number	Client Info		<b>WC</b>	---	---
Sample Date	Client Info		<b>19 Dec 2023</b>	---	---
Machine Age	hrs	Client Info	<b>0</b>	---	---
Oil Age	hrs	Client Info	<b>0</b>	---	---
Oil Changed	Client Info		<b>N/A</b>	---	---
Sample Status			<b>NORMAL</b>	---	---

## CONTAMINATION

	method	limit/base	current	history1	history2
Water	WC Method		<b>NEG</b>	---	---

## WEAR METALS

	method	limit/base	current	history1	history2
Iron	ppm	ASTM D5185(m)	<b>&lt;1</b>	---	---
Chromium	ppm	ASTM D5185(m)	<b>0</b>	---	---
Nickel	ppm	ASTM D5185(m)	<b>&lt;1</b>	---	---
Titanium	ppm	ASTM D5185(m)	<b>0</b>	---	---
Silver	ppm	ASTM D5185(m)	<b>0</b>	---	---
Aluminum	ppm	ASTM D5185(m)	<b>1</b>	---	---
Lead	ppm	ASTM D5185(m)	<b>0</b>	---	---
Copper	ppm	ASTM D5185(m)	<b>0</b>	---	---
Tin	ppm	ASTM D5185(m)	<b>&lt;1</b>	---	---
Antimony	ppm	ASTM D5185(m)	<b>0</b>	---	---
Vanadium	ppm	ASTM D5185(m)	<b>0</b>	---	---
Beryllium	ppm	ASTM D5185(m)	<b>0</b>	---	---
Cadmium	ppm	ASTM D5185(m)	<b>0</b>	---	---

## ADDITIVES

	method	limit/base	current	history1	history2
Boron	ppm	ASTM D5185(m)	<b>2</b>	---	---
Barium	ppm	ASTM D5185(m)	<b>3</b>	---	---
Molybdenum	ppm	ASTM D5185(m)	<b>0</b>	---	---
Manganese	ppm	ASTM D5185(m)	<b>0</b>	---	---
Magnesium	ppm	ASTM D5185(m)	<b>4</b>	---	---
Calcium	ppm	ASTM D5185(m)	<b>1727</b>	---	---
Phosphorus	ppm	ASTM D5185(m)	<b>272</b>	---	---
Zinc	ppm	ASTM D5185(m)	<b>333</b>	---	---
Sulfur	ppm	ASTM D5185(m)	<b>3415</b>	---	---
Lithium	ppm	ASTM D5185(m)	<b>&lt;1</b>	---	---

## CONTAMINANTS

	method	limit/base	current	history1	history2
Silicon	ppm	ASTM D5185(m)	<b>3</b>	---	---
Sodium	ppm	ASTM D5185(m)	<b>&lt;1</b>	---	---
Potassium	ppm	ASTM D5185(m)	<b>&gt;20</b>	---	---

## INFRA-RED



	method	limit/base	current	history1	history2
Soot %	%	ASTM D7844*	<b>0</b>	---	---
Nitration	Abs/cm	ASTM D7624*	<b>2.6</b>	---	---
Sulfation	Abs/.1mm	ASTM D7415*	<b>14.8</b>	---	---

## FLUID DEGRADATION

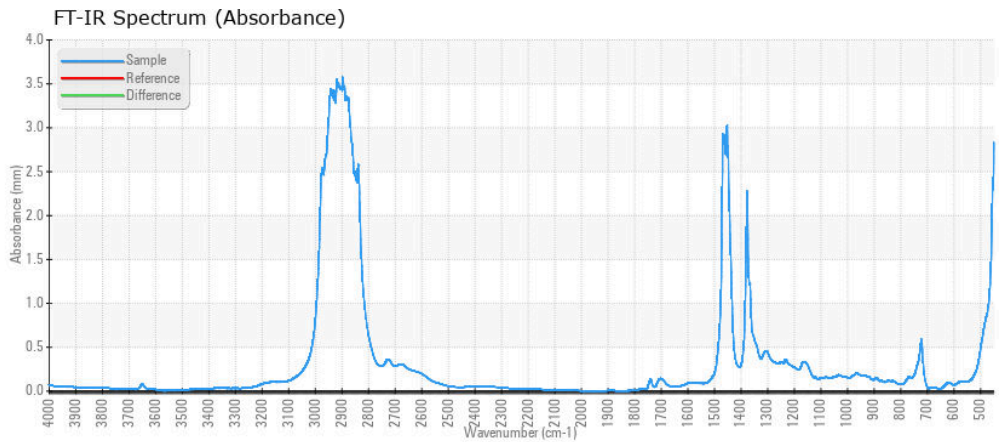
	method	limit/base	current	history1	history2
Oxidation	Abs/.1mm	ASTM D7414*	<b>7.9</b>	---	---

# OIL ANALYSIS REPORT

VISUAL	method	limit/base	current	history1	history2	
White Metal	scalar	Visual*	NONE	<b>NONE</b>	---	---
Yellow Metal	scalar	Visual*	NONE	<b>NONE</b>	---	---
Precipitate	scalar	Visual*	NONE	<b>NONE</b>	---	---
Silt	scalar	Visual*	NONE	<b>NONE</b>	---	---
Debris	scalar	Visual*	NONE	<b>NONE</b>	---	---
Sand/Dirt	scalar	Visual*	NONE	<b>NONE</b>	---	---
Appearance	scalar	Visual*	NORML	<b>NORML</b>	---	---
Odor	scalar	Visual*	NORML	<b>NORML</b>	---	---

SAMPLE IMAGES	method	limit/base	current	history1	history2
Color				no image	no image
Bottom				no image	no image

## GRAPHS



**Laboratory** : WearCheck - C8-1175 Appleby Line, Burlington, ON L7L 5H9  
**Sample No.** : WC **Recieved** : 20 Dec 2023  
**Lab Number** : **02604551** **Diagnosed** : 21 Dec 2023  
**Unique Number** : 5697636 **Diagnostician** : Bill Quesnel  
**Test Package** : TEST ( Additional Tests: FT-IR, ICP )

**WEARCHECK CANADA INC.**  
 C8-1175 Appleby Line  
 BURLINGTON, ON  
 CA L7L 5H9  
 Contact: Dorian Anderson  
 dorian.anderson@wearcheck.com  
 T:  
 F: (905)569-8605

To discuss this sample report, contact Customer Service at 1-800-268-2131.  
 Test denoted (\*) outside scope of accreditation, (m) method modified, (e) tested at external lab.  
 Validity of results and interpretation are based on the sample and information as supplied.