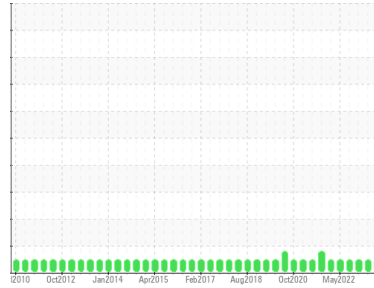




OIL ANALYSIS REPORT

Sample Rating Trend

NORMAL



Area
SAB1
Machine Id
SAB1 G7
Component
Thrust Bearing
Fluid
ESSO TERESSO ISO 46 (4250 LTR)

DIAGNOSIS

Recommendation

Resample at the next service interval to monitor. Please contact your representative for information regarding the proper sampling kits for your service. NOTE: We recommend using IND 3 test kits, this testkit includes Analytical Ferrography which provides a detailed morphological analysis of wear particles present in the fluid.

Wear

All component wear rates are normal.

Contamination

The system cleanliness is acceptable for your target ISO 4406 cleanliness code. The system and fluid cleanliness is acceptable.

Fluid Condition

The AN level is acceptable for this fluid. The condition of the oil is suitable for further service.

SAMPLE INFORMATION		method	limit/base	current	history1	history2
Sample Number	Client Info			WC0864645	WC0828626	WC0587305
Sample Date	Client Info			21 Dec 2023	27 Aug 2023	14 Nov 2022
Machine Age	hrs	Client Info		0	0	0
Oil Age	hrs	Client Info		0	0	0
Oil Changed	Client Info			N/A	N/A	N/A
Sample Status				NORMAL	NORMAL	NORMAL

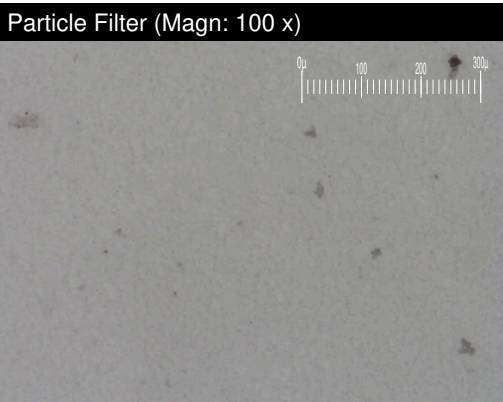
CONTAMINATION		method	limit/base	current	history1	history2
Water	WC Method		>2	NEG	NEG	NEG

WEAR METALS		method	limit/base	current	history1	history2
Iron	ppm	ASTM D5185(m)	>85	3	3	3
Chromium	ppm	ASTM D5185(m)	>20	0	0	0
Nickel	ppm	ASTM D5185(m)	>20	0	<1	<1
Titanium	ppm	ASTM D5185(m)		0	0	0
Silver	ppm	ASTM D5185(m)		0	0	0
Aluminum	ppm	ASTM D5185(m)	>40	<1	<1	0
Lead	ppm	ASTM D5185(m)	>60	0	0	<1
Copper	ppm	ASTM D5185(m)	>7	<1	<1	<1
Tin	ppm	ASTM D5185(m)	>40	<1	0	<1
Antimony	ppm	ASTM D5185(m)		0	0	<1
Vanadium	ppm	ASTM D5185(m)		0	0	0
Beryllium	ppm	ASTM D5185(m)		0	0	0
Cadmium	ppm	ASTM D5185(m)		0	0	0

ADDITIVES		method	limit/base	current	history1	history2
Boron	ppm	ASTM D5185(m)	0	0	<1	<1
Barium	ppm	ASTM D5185(m)		0	0	0
Molybdenum	ppm	ASTM D5185(m)	0	0	0	0
Manganese	ppm	ASTM D5185(m)		0	0	0
Magnesium	ppm	ASTM D5185(m)	0	0	0	0
Calcium	ppm	ASTM D5185(m)	0	<1	<1	0
Phosphorus	ppm	ASTM D5185(m)	2.4	<1	1	<1
Zinc	ppm	ASTM D5185(m)	0	2	2	1
Sulfur	ppm	ASTM D5185(m)		1528	1432	1491
Lithium	ppm	ASTM D5185(m)		<1	<1	<1

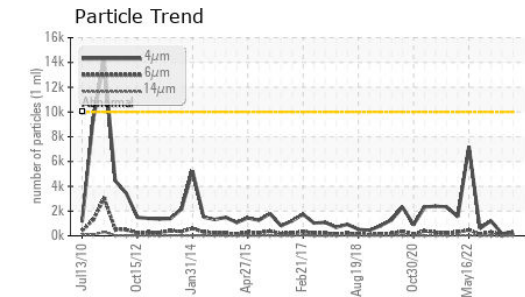
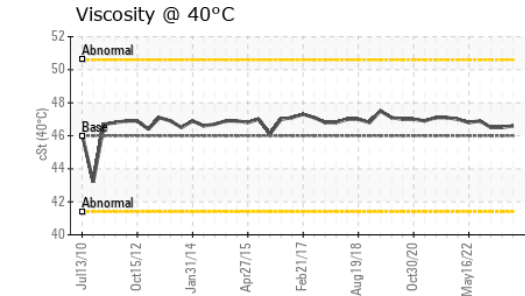
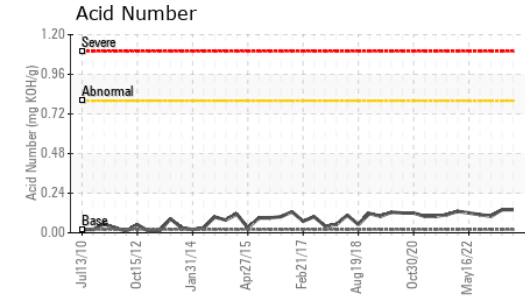
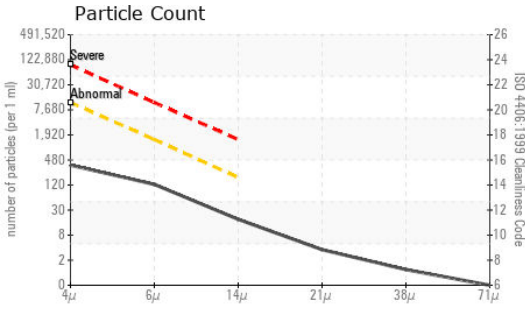
CONTAMINANTS		method	limit/base	current	history1	history2
Silicon	ppm	ASTM D5185(m)	>20	3	4	3
Sodium	ppm	ASTM D5185(m)		0	0	0
Potassium	ppm	ASTM D5185(m)	>20	1	<1	0

FLUID CLEANLINESS		method	limit/base	current	history1	history2
Particles >4µm	ASTM D7647	>10000	317	165	1201	
Particles >6µm	ASTM D7647	>1300	110	50	320	
Particles >14µm	ASTM D7647	>160	16	5	15	
Particles >21µm	ASTM D7647	>40	3	2	3	
Particles >38µm	ASTM D7647	>10	1	1	0	
Particles >71µm	ASTM D7647	>3	0	1	0	
Oil Cleanliness	ISO 4406 (c)	>20/17/14	15/14/11	15/13/10	17/15/11	





OIL ANALYSIS REPORT

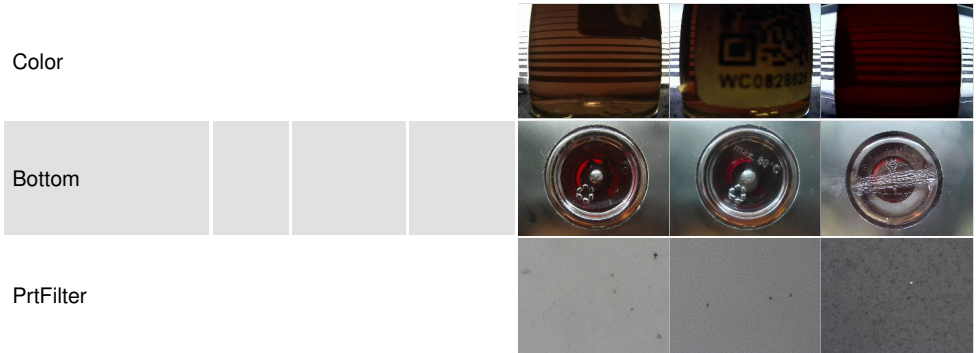


FLUID DEGRADATION	method	limit/base	current	history1	history2	
Acid Number (AN)	mg KOH/g	ASTM D974*	0.02	0.14	0.14	0.10

VISUAL	method	limit/base	current	history1	history2	
White Metal	scalar	Visual*	NONE	NONE	NONE	NONE
Yellow Metal	scalar	Visual*	NONE	NONE	NONE	NONE
Precipitate	scalar	Visual*	NONE	NONE	NONE	NONE
Silt	scalar	Visual*	NONE	NONE	NONE	NONE
Debris	scalar	Visual*	NONE	NONE	NONE	NONE
Sand/Dirt	scalar	Visual*	NONE	NONE	NONE	NONE
Appearance	scalar	Visual*	NORML	NORML	NORML	NORML
Odor	scalar	Visual*	NORML	NORML	NORML	NORML
Emulsified Water	scalar	Visual*	>2	NEG	NEG	NEG
Free Water	scalar	Visual*		NEG	NEG	NEG

FLUID PROPERTIES	method	limit/base	current	history1	history2	
Visc @ 40°C	cSt	ASTM D7279(m)	46	46.6	46.5	46.5

SAMPLE IMAGES	method	limit/base	current	history1	history2
---------------	--------	------------	---------	----------	----------



Laboratory : WearCheck - C8-1175 Appleby Line, Burlington, ON L7L 5H9
Sample No. : WC0864645 **Received** : 22 Dec 2023
Lab Number : **02604973** **Diagnosed** : 27 Dec 2023
Unique Number : 5698058 **Diagnostician** : Kevin Marson
Test Package : IND 2 (Additional Tests: BottomAnalysis, FilterPatch, PrtFilter, TAN Man)

Ontario Power Generation
 NIAGARA PLANT GROUP., 14000 NIAGARA PKWY
 NIAGARA ON THE LAKE, ON
 CA L0S 1J0
 Contact: Michael Brochu
 mike.brochu@opg.com
 T: (905)357-0322
 F: (905)374-5466

To discuss this sample report, contact Customer Service at 1-800-268-2131.
 Test denoted (*) outside scope of accreditation, (m) method modified, (e) tested at external lab.
 Validity of results and interpretation are based on the sample and information as supplied.