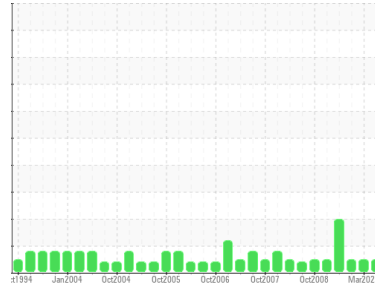




# OIL ANALYSIS REPORT

Sample Rating Trend

**NORMAL**



Area  
**SAB1**  
 Machine Id  
**SAB1 G1**  
 Component  
**Thrust Bearing**  
 Fluid  
**ESSO TERESSO ISO 46 (4250 LTR)**

## DIAGNOSIS

### Recommendation

Resample at the next service interval to monitor. Please contact your representative for information regarding the proper sampling kits for your service. NOTE: We recommend using IND 3 test kits, this testkit includes Analytical Ferrography which provides a detailed morphological analysis of wear particles present in the fluid.

### Wear

All component wear rates are normal.

### Contamination

The system cleanliness is acceptable for your target ISO 4406 cleanliness code. The system and fluid cleanliness is acceptable.

### Fluid Condition

The AN level is acceptable for this fluid. The condition of the oil is suitable for further service.

SAMPLE INFORMATION		method	limit/base	current	history1	history2
Sample Number	Client Info			<b>WC0642852</b>	WC0565954	WC0565955
Sample Date	Client Info			<b>21 Dec 2023</b>	07 Mar 2023	07 Mar 2023
Machine Age	hrs	Client Info		<b>0</b>	0	0
Oil Age	hrs	Client Info		<b>0</b>	0	0
Oil Changed	Client Info			<b>N/A</b>	N/A	N/A
Sample Status				<b>NORMAL</b>	NORMAL	NORMAL

CONTAMINATION		method	limit/base	current	history1	history2
Water	WC Method		>2	<b>NEG</b>	NEG	NEG

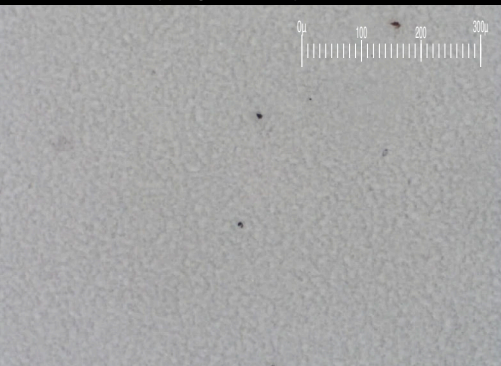
WEAR METALS		method	limit/base	current	history1	history2
Iron	ppm	ASTM D5185(m)	>85	<b>0</b>	<1	<1
Chromium	ppm	ASTM D5185(m)	>20	<b>0</b>	0	0
Nickel	ppm	ASTM D5185(m)	>20	<b>0</b>	<1	0
Titanium	ppm	ASTM D5185(m)		<b>0</b>	0	0
Silver	ppm	ASTM D5185(m)		<b>0</b>	0	0
Aluminum	ppm	ASTM D5185(m)	>40	<b>&lt;1</b>	0	0
Lead	ppm	ASTM D5185(m)	>60	<b>0</b>	<1	0
Copper	ppm	ASTM D5185(m)	>7	<b>&lt;1</b>	0	0
Tin	ppm	ASTM D5185(m)	>40	<b>0</b>	0	0
Antimony	ppm	ASTM D5185(m)		<b>0</b>	<1	0
Vanadium	ppm	ASTM D5185(m)		<b>0</b>	0	0
Beryllium	ppm	ASTM D5185(m)		<b>0</b>	0	0
Cadmium	ppm	ASTM D5185(m)		<b>0</b>	0	0

ADDITIVES		method	limit/base	current	history1	history2
Boron	ppm	ASTM D5185(m)	0	<b>0</b>	<1	<1
Barium	ppm	ASTM D5185(m)		<b>0</b>	0	0
Molybdenum	ppm	ASTM D5185(m)	0	<b>0</b>	0	0
Manganese	ppm	ASTM D5185(m)		<b>0</b>	0	<1
Magnesium	ppm	ASTM D5185(m)	0	<b>0</b>	0	0
Calcium	ppm	ASTM D5185(m)	0	<b>1</b>	0	0
Phosphorus	ppm	ASTM D5185(m)	2.4	<b>2</b>	1	1
Zinc	ppm	ASTM D5185(m)	0	<b>1</b>	1	1
Sulfur	ppm	ASTM D5185(m)		<b>682</b>	679	643
Lithium	ppm	ASTM D5185(m)		<b>&lt;1</b>	<1	<1

CONTAMINANTS		method	limit/base	current	history1	history2
Silicon	ppm	ASTM D5185(m)	>20	<b>1</b>	<1	4
Sodium	ppm	ASTM D5185(m)		<b>0</b>	0	0
Potassium	ppm	ASTM D5185(m)	>20	<b>0</b>	<1	0

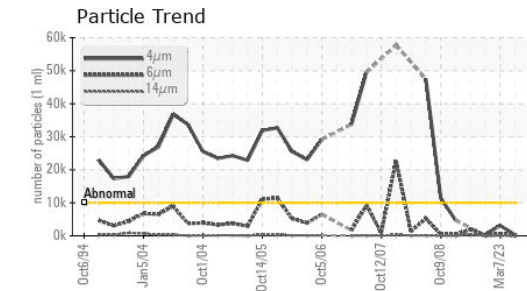
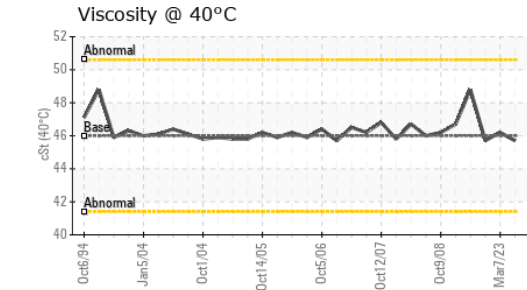
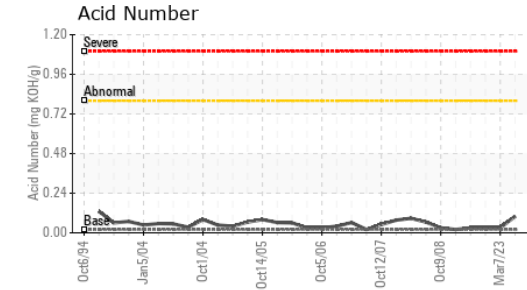
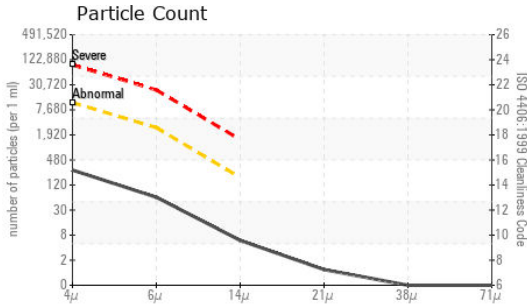
FLUID CLEANLINESS		method	limit/base	current	history1	history2
Particles >4µm	ASTM D7647	>10000	<b>242</b>	122	3121	
Particles >6µm	ASTM D7647	>2500	<b>54</b>	39	629	
Particles >14µm	ASTM D7647	>160	<b>5</b>	6	46	
Particles >21µm	ASTM D7647	>40	<b>1</b>	2	13	
Particles >38µm	ASTM D7647	>10	<b>0</b>	0	0	
Particles >71µm	ASTM D7647	>3	<b>0</b>	0	0	
Oil Cleanliness	ISO 4406 (c)	>20/18/14	<b>15/13/10</b>	14/12/10	19/16/13	

Particle Filter (Magn: 100 x)





# OIL ANALYSIS REPORT

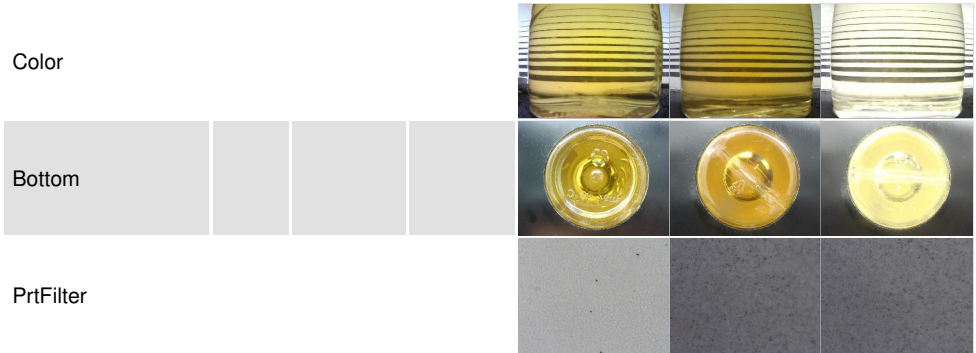


FLUID DEGRADATION	method	limit/base	current	history1	history2	
Acid Number (AN)	mg KOH/g	ASTM D974*	0.02	<b>0.10</b>	0.03	0.03

VISUAL	method	limit/base	current	history1	history2	
White Metal	scalar	Visual*	NONE	<b>NONE</b>	NONE	NONE
Yellow Metal	scalar	Visual*	NONE	<b>NONE</b>	NONE	NONE
Precipitate	scalar	Visual*	NONE	<b>NONE</b>	NONE	NONE
Silt	scalar	Visual*	NONE	<b>NONE</b>	NONE	NONE
Debris	scalar	Visual*	NONE	<b>NONE</b>	NONE	NONE
Sand/Dirt	scalar	Visual*	NONE	<b>NONE</b>	NONE	NONE
Appearance	scalar	Visual*	NORML	<b>NORML</b>	NORML	NORML
Odor	scalar	Visual*	NORML	<b>NORML</b>	NORML	NORML
Emulsified Water	scalar	Visual*	>2	<b>NEG</b>	NEG	NEG
Free Water	scalar	Visual*		<b>NEG</b>	NEG	NEG

FLUID PROPERTIES	method	limit/base	current	history1	history2	
Visc @ 40°C	cSt	ASTM D7279(m)	46	<b>45.7</b>	46.2	45.7

SAMPLE IMAGES	method	limit/base	current	history1	history2
---------------	--------	------------	---------	----------	----------



**Laboratory** : WearCheck - C8-1175 Appleby Line, Burlington, ON L7L 5H9  
**Sample No.** : WC0642852  
**Lab Number** : **02604981**  
**Unique Number** : 5698066  
**Test Package** : IND 2 ( Additional Tests: BottomAnalysis, FilterPatch, PrtFilter, TAN Man )

**Ontario Power Generation**  
 NIAGARA PLANT GROUP., 14000 NIAGARA PKWY  
 NIAGARA ON THE LAKE, ON  
 CA L0S 1J0  
 Contact: Michael Brochu  
 mike.brochu@opg.com  
 T: (905)357-0322  
 F: (905)374-5466

To discuss this sample report, contact Customer Service at 1-800-268-2131.  
 Test denoted (\*) outside scope of accreditation, (m) method modified, (e) tested at external lab.  
 Validity of results and interpretation are based on the sample and information as supplied.