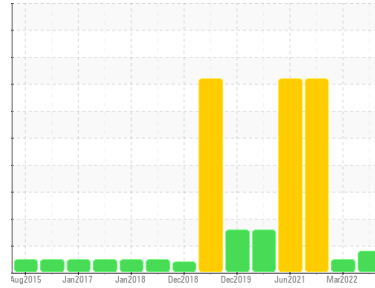




OIL ANALYSIS REPORT

Sample Rating Trend



ISO



Machine Id
NCH G LGBR

Component
Bearing

Fluid
ESSO TERESSO ISO 68 (95 LTR)

DIAGNOSIS

Recommendation

We recommend you service the filters on this component. Resample at the next service interval to monitor.

Wear

All component wear rates are normal.

Contamination

There is a light amount of silt (particulates < 14 microns in size) present in the oil.

Fluid Condition

The AN level is acceptable for this fluid. The condition of the oil is suitable for further service.

| SAMPLE INFORMATION | | method | limit/base | current | history1 | history2 |
|--------------------|-------------|-------------|------------|--------------------|-------------|-------------|
| Sample Number | Client Info | | | WC0445181 | WC0445194 | WC0445189 |
| Sample Date | Client Info | | | 14 Dec 2023 | 15 Mar 2022 | 19 Jan 2022 |
| Machine Age | hrs | Client Info | | 0 | 0 | 0 |
| Oil Age | hrs | Client Info | | 0 | 0 | 0 |
| Oil Changed | Client Info | | | N/A | Filtered | N/A |
| Sample Status | | | | ATTENTION | NORMAL | SEVERE |

| CONTAMINATION | | method | limit/base | current | history1 | history2 |
|---------------|-----------|--------|------------|------------|----------|----------|
| Water | WC Method | | >2 | NEG | NEG | NEG |

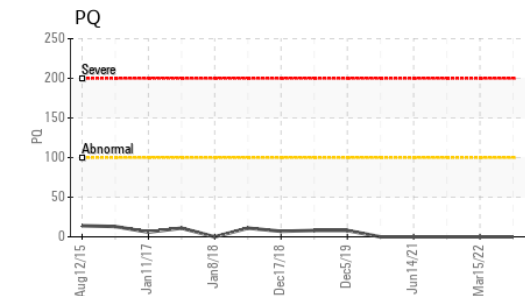
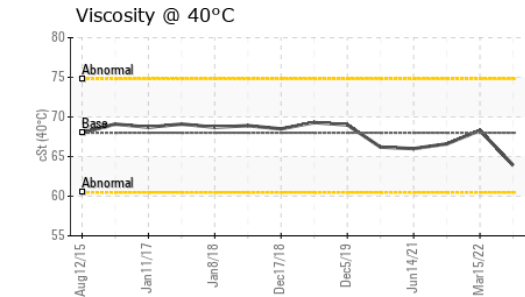
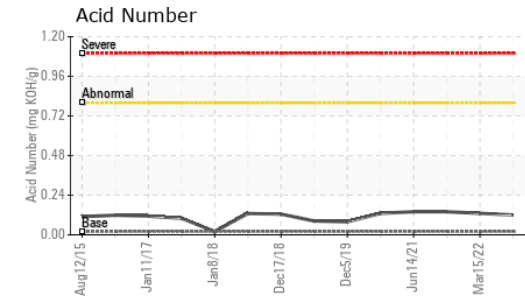
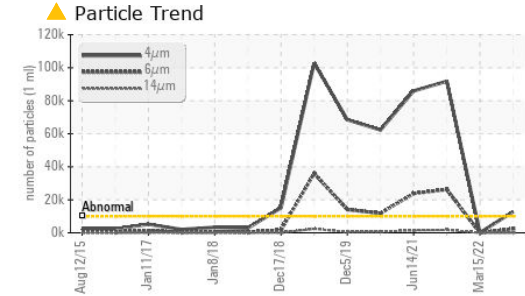
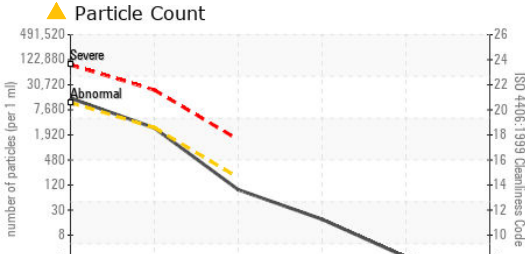
| WEAR METALS | | method | limit/base | current | history1 | history2 |
|-------------|-----|---------------|------------|--------------|----------|----------|
| PQ | | ASTM D8184* | | 0 | 0 | 0 |
| Iron | ppm | ASTM D5185(m) | >63 | 0 | <1 | <1 |
| Chromium | ppm | ASTM D5185(m) | >20 | 0 | 0 | 0 |
| Nickel | ppm | ASTM D5185(m) | >20 | 0 | <1 | 0 |
| Titanium | ppm | ASTM D5185(m) | | 0 | 0 | 0 |
| Silver | ppm | ASTM D5185(m) | | 0 | 0 | 0 |
| Aluminum | ppm | ASTM D5185(m) | >2 | <1 | <1 | <1 |
| Lead | ppm | ASTM D5185(m) | >161 | 20 | 2 | 6 |
| Copper | ppm | ASTM D5185(m) | >13 | 6 | <1 | 3 |
| Tin | ppm | ASTM D5185(m) | >27 | 0 | 0 | 0 |
| Antimony | ppm | ASTM D5185(m) | | 0 | <1 | <1 |
| Vanadium | ppm | ASTM D5185(m) | | 0 | 0 | 0 |
| Beryllium | ppm | ASTM D5185(m) | | 0 | 0 | 0 |
| Cadmium | ppm | ASTM D5185(m) | | 0 | 0 | 0 |

| ADDITIVES | | method | limit/base | current | history1 | history2 |
|------------|-----|---------------|------------|--------------|----------|----------|
| Boron | ppm | ASTM D5185(m) | 4.5 | 0 | <1 | <1 |
| Barium | ppm | ASTM D5185(m) | 0.4 | 0 | 0 | 0 |
| Molybdenum | ppm | ASTM D5185(m) | 0 | 0 | 0 | 0 |
| Manganese | ppm | ASTM D5185(m) | | 0 | 0 | 0 |
| Magnesium | ppm | ASTM D5185(m) | 0 | <1 | 0 | <1 |
| Calcium | ppm | ASTM D5185(m) | 0 | 0 | <1 | <1 |
| Phosphorus | ppm | ASTM D5185(m) | 0.7 | 84 | 13 | 33 |
| Zinc | ppm | ASTM D5185(m) | 0 | 41 | 7 | 21 |
| Sulfur | ppm | ASTM D5185(m) | 1315 | 1809 | 1908 | 1779 |
| Lithium | ppm | ASTM D5185(m) | | <1 | <1 | <1 |

| CONTAMINANTS | | method | limit/base | current | history1 | history2 |
|--------------|-----|---------------|------------|--------------|----------|----------|
| Silicon | ppm | ASTM D5185(m) | >12 | 2 | 4 | 4 |
| Sodium | ppm | ASTM D5185(m) | | <1 | <1 | <1 |
| Potassium | ppm | ASTM D5185(m) | >20 | <1 | <1 | <1 |



OIL ANALYSIS REPORT



Laboratory : WearCheck - C8-1175 Appleby Line, Burlington, ON L7L 5H9
Sample No. : WC0445181 **Received** : 22 Dec 2023
Lab Number : 02604996 **Diagnosed** : 28 Dec 2023
Unique Number : 5698081 **Diagnostician** : Kevin Marson
Test Package : IND 2 (Additional Tests: PQ, PrtCount, TAN Man)

To discuss this sample report, contact Customer Service at 1-800-268-2131.
 Test denoted (*) outside scope of accreditation, (m) method modified, (e) tested at external lab.
 Validity of results and interpretation are based on the sample and information as supplied.

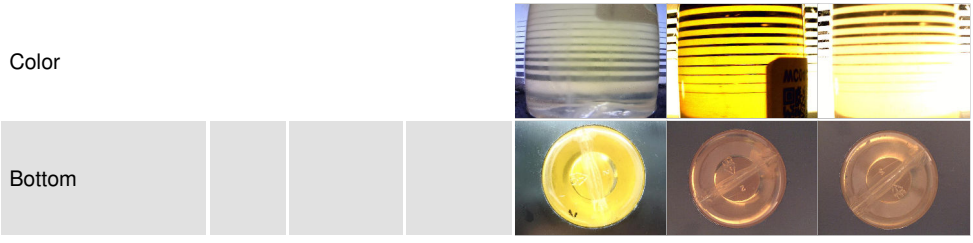
| FLUID CLEANLINESS | method | limit/base | current | history1 | history2 |
|-------------------|--------------|------------|------------|----------|------------|
| Particles >4µm | ASTM D7647 | >10000 | ▲ 12772 | 72 | ● 91790 |
| Particles >6µm | ASTM D7647 | >2500 | 2467 | 19 | ● 26211 |
| Particles >14µm | ASTM D7647 | >160 | 82 | 2 | ● 1778 |
| Particles >21µm | ASTM D7647 | >40 | 16 | 0 | ● 418 |
| Particles >38µm | ASTM D7647 | >10 | 2 | 0 | ▲ 24 |
| Particles >71µm | ASTM D7647 | >3 | 1 | 0 | 2 |
| Oil Cleanliness | ISO 4406 (c) | >20/18/14 | ▲ 21/18/14 | 13/11/9 | ● 24/22/18 |

| FLUID DEGRADATION | method | limit/base | current | history1 | history2 |
|-------------------|---------------------|------------|---------|----------|----------|
| Acid Number (AN) | mg KOH/g ASTM D974* | 0.02 | 0.12 | 0.13 | 0.14 |

| VISUAL | method | limit/base | current | history1 | history2 |
|------------------|----------------|------------|---------|----------|----------|
| White Metal | scalar Visual* | NONE | NONE | NONE | NONE |
| Yellow Metal | scalar Visual* | NONE | NONE | NONE | NONE |
| Precipitate | scalar Visual* | NONE | NONE | NONE | NONE |
| Silt | scalar Visual* | NONE | NONE | NONE | NONE |
| Debris | scalar Visual* | NONE | VLITE | NONE | NONE |
| Sand/Dirt | scalar Visual* | NONE | NONE | NONE | VLITE |
| Appearance | scalar Visual* | NORML | NORML | NORML | NORML |
| Odor | scalar Visual* | NORML | NORML | NORML | NORML |
| Emulsified Water | scalar Visual* | >2 | NEG | NEG | NEG |
| Free Water | scalar Visual* | | NEG | NEG | NEG |

| FLUID PROPERTIES | method | limit/base | current | history1 | history2 |
|------------------|-------------------|------------|---------|----------|----------|
| Visc @ 40°C | cSt ASTM D7279(m) | 68 | 63.9 | 68.3 | 66.6 |

| SAMPLE IMAGES | method | limit/base | current | history1 | history2 |
|---------------|--------|------------|---------|----------|----------|
|---------------|--------|------------|---------|----------|----------|



NEWFOUNDLAND POWER INC.
 50 DUFFY PLACE, PO BOX 8910
 ST. JOHNS, NL
 CA A1B 3P6
 Contact: Paul Martin
 pmartin@newfoundlandpower.com
 T: (709)737-2926