



OIL ANALYSIS REPORT

Sample Rating Trend

NORMAL



Area

[127063]

Machine Id

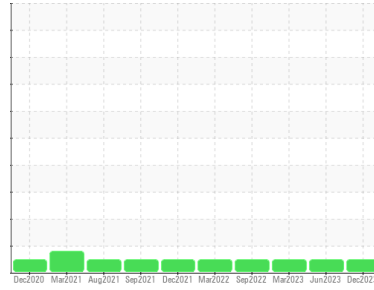
0062 HILLE #3 MILL POWER PACK

Component

Hydraulic System

Fluid

MONARCH PREMIUM HYDRAULIC OIL AW R&O 46 (--- GAL)



DIAGNOSIS

Recommendation

Resample at the next service interval to monitor. NOTE: Please provide information regarding reservoir capacity, filter type and micron rating with next sample.

Wear

An increase in the iron level is noted. All other component wear rates are normal.

Contamination

The system cleanliness is acceptable for your target ISO 4406 cleanliness code. The system and fluid cleanliness is acceptable.

Fluid Condition

The AN level is acceptable for this fluid. The condition of the oil is suitable for further service.

SAMPLE INFORMATION

	method	limit/base	current	history1	history2
Sample Number	Client Info		WC0378079	WC0378091	WC0487129
Sample Date	Client Info		20 Dec 2023	28 Jun 2023	22 Mar 2023
Machine Age	hrs	Client Info	0	0	0
Oil Age	hrs	Client Info	0	0	0
Oil Changed	Client Info		N/A	N/A	N/A
Sample Status			NORMAL	NORMAL	NORMAL

CONTAMINATION

	method	limit/base	current	history1	history2
Water	WC Method	>0.05	NEG	NEG	NEG

WEAR METALS

	method	limit/base	current	history1	history2	
Iron	ppm	ASTM D5185(m)	>20	12	8	8
Chromium	ppm	ASTM D5185(m)	>20	<1	<1	<1
Nickel	ppm	ASTM D5185(m)	>20	<1	<1	<1
Titanium	ppm	ASTM D5185(m)		0	0	0
Silver	ppm	ASTM D5185(m)		0	0	0
Aluminum	ppm	ASTM D5185(m)	>20	1	<1	<1
Lead	ppm	ASTM D5185(m)	>20	9	3	5
Copper	ppm	ASTM D5185(m)	>20	25	16	21
Tin	ppm	ASTM D5185(m)	>20	7	9	4
Antimony	ppm	ASTM D5185(m)		0	<1	<1
Vanadium	ppm	ASTM D5185(m)		0	0	0
Beryllium	ppm	ASTM D5185(m)		0	0	0
Cadmium	ppm	ASTM D5185(m)		0	0	0

ADDITIVES

	method	limit/base	current	history1	history2	
Boron	ppm	ASTM D5185(m)		<1	<1	1
Barium	ppm	ASTM D5185(m)		0	0	0
Molybdenum	ppm	ASTM D5185(m)		0	0	0
Manganese	ppm	ASTM D5185(m)		1	<1	<1
Magnesium	ppm	ASTM D5185(m)		40	16	27
Calcium	ppm	ASTM D5185(m)		91	96	85
Phosphorus	ppm	ASTM D5185(m)		445	410	459
Zinc	ppm	ASTM D5185(m)		485	444	460
Sulfur	ppm	ASTM D5185(m)		1434	1204	1513
Lithium	ppm	ASTM D5185(m)		<1	<1	<1

CONTAMINANTS

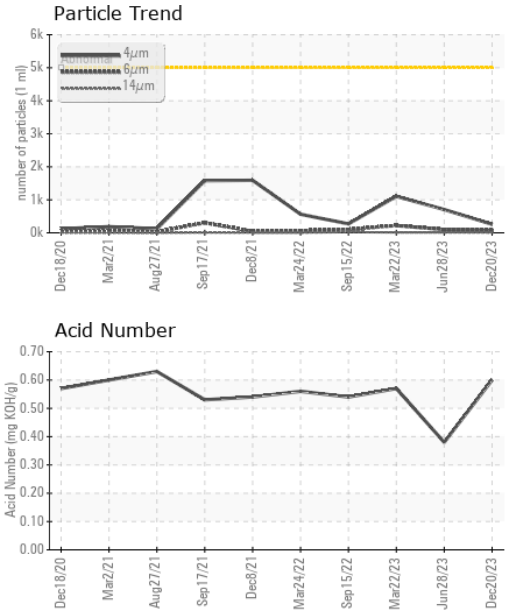
	method	limit/base	current	history1	history2	
Silicon	ppm	ASTM D5185(m)	>15	1	<1	1
Sodium	ppm	ASTM D5185(m)		3	2	2
Potassium	ppm	ASTM D5185(m)	>20	0	<1	0

FLUID CLEANLINESS

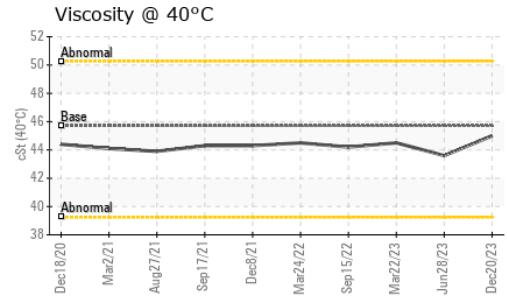
	method	limit/base	current	history1	history2
Particles >4µm	ASTM D7647	>5000	258	705	1106
Particles >6µm	ASTM D7647	>1300	75	100	221
Particles >14µm	ASTM D7647	>160	8	12	12
Particles >21µm	ASTM D7647	>40	2	4	2
Particles >38µm	ASTM D7647	>10	1	0	0
Particles >71µm	ASTM D7647	>3	1	0	0
Oil Cleanliness	ISO 4406 (c)	>19/17/14	15/13/10	17/14/11	17/15/11



OIL ANALYSIS REPORT



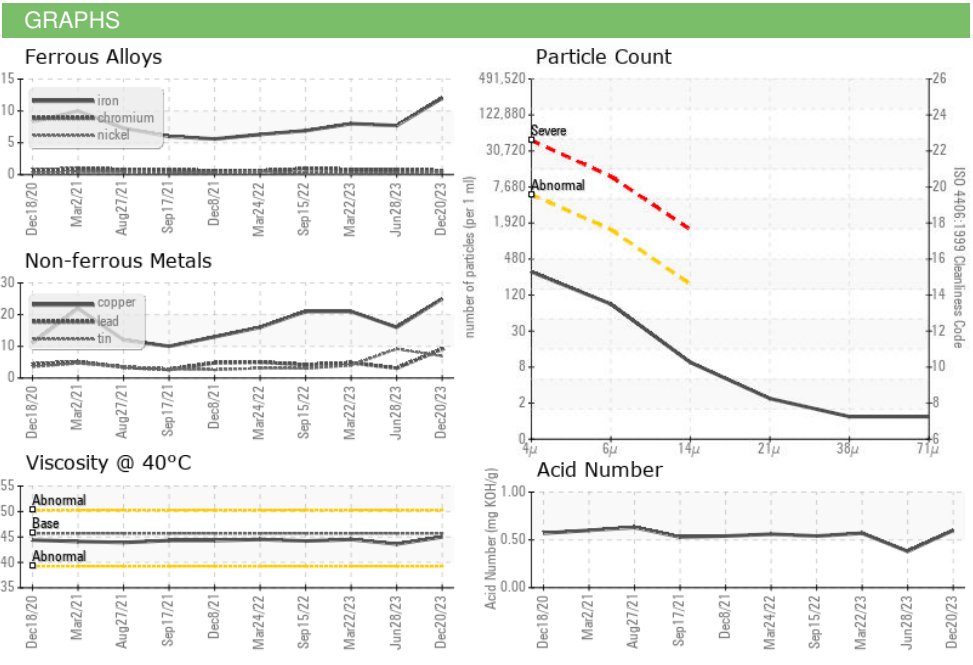
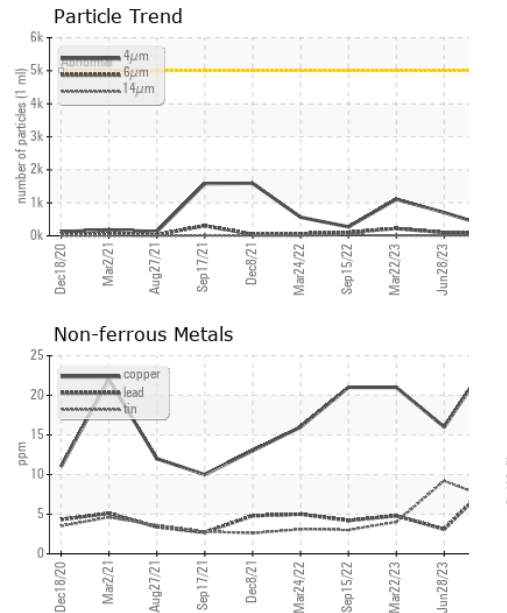
FLUID DEGRADATION		method	limit/base	current	history1	history2
Acid Number (AN)	mg KOH/g	ASTM D974*		0.60	0.38	0.57
VISUAL		method	limit/base	current	history1	history2
White Metal	scalar	Visual*	NONE	NONE	NONE	NONE
Yellow Metal	scalar	Visual*	NONE	NONE	NONE	NONE
Precipitate	scalar	Visual*	NONE	NONE	NONE	NONE
Silt	scalar	Visual*	NONE	NONE	NONE	NONE
Debris	scalar	Visual*	NONE	NONE	NONE	NONE
Sand/Dirt	scalar	Visual*	NONE	NONE	NONE	NONE
Appearance	scalar	Visual*	NORML	NORML	NORML	NORML
Odor	scalar	Visual*	NORML	NORML	NORML	NORML
Emulsified Water	scalar	Visual*	>0.05	NEG	NEG	NEG
Free Water	scalar	Visual*		NEG	NEG	NEG



FLUID PROPERTIES		method	limit/base	current	history1	history2
Visc @ 40°C	cSt	ASTM D7279(m)	45.7	45.0	43.6	44.5

SAMPLE IMAGES

method	limit/base	current	history1	history2
Color				
Bottom				



Laboratory : WearCheck - C8-1175 Appleby Line, Burlington, ON L7L 5H9
Sample No. : WC0378079
Lab Number : 02606549
Unique Number : 5707635
Test Package : IND 2

HENDRICKSON CANADA LTD.
 532 ROMEO STREET
 STRATFORD, ON
 CA N5A 7X1
 Contact: Sandeep Bhatt
 sbhatt@hendrickson-intl.com
 T: (519)273-8707
 F: (519)271-3103

To discuss this sample report, contact Customer Service at 1-800-268-2131.
 Test denoted (*) outside scope of accreditation, (m) method modified, (e) tested at external lab.
 Validity of results and interpretation are based on the sample and information as supplied.