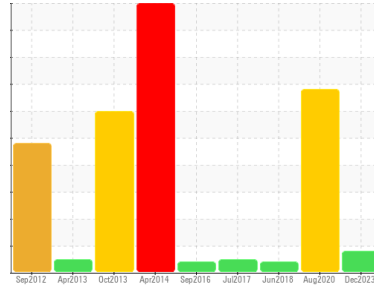




OIL ANALYSIS REPORT

Sample Rating Trend



ADDITIVES



Machine Id
DODGE TD425 105543 - #2 STONE BELT

Component
Gearbox

Fluid
MOBIL MOBILGEAR SHC 220 (8 LTR)

DIAGNOSIS

Recommendation

We advise that you check all areas where contaminants can enter the system. The air breather requires service. If unrated, we recommend that you replace with a suitable micron rated and/or desiccant air breather. If rated, we recommend that you service/replace the breather. We advise that you perform a filter service, and use off-line filtration to improve the cleanliness of the system fluid. Confirm the source of the lubricant being utilized for top-up/fill. Resample at the next service interval to monitor.

Wear

All component wear rates are normal.

Contamination

Calcium and/or magnesium levels higher than normal indicating possible lime contamination, advise investigate.

Fluid Condition

Additive levels indicate the addition of a different brand, or type of oil. The AN level is acceptable for this fluid.

SAMPLE INFORMATION

	method	limit/base	current	history1	history2
Sample Number	Client Info		WC0835498	WC981275	WC0295490
Sample Date	Client Info		18 Dec 2023	18 Aug 2020	26 Jun 2018
Machine Age	hrs	Client Info	0	0	0
Oil Age	hrs	Client Info	0	0	0
Oil Changed	Client Info		Not Changed	N/A	N/A
Sample Status			ATTENTION	SEVERE	ATTENTION

CONTAMINATION

	method	limit/base	current	history1	history2
Water	WC Method	>0.2	NEG	NEG	NEG

WEAR METALS

	method	limit/base	current	history1	history2
PQ	ASTM D8184*		129	1988	141
Iron	ppm	ASTM D5185(m) >200	178	495	182
Chromium	ppm	ASTM D5185(m) >15	1	3	1
Nickel	ppm	ASTM D5185(m) >15	1	<1	<1
Titanium	ppm	ASTM D5185(m)	0	<1	0
Silver	ppm	ASTM D5185(m)	0	0	0
Aluminum	ppm	ASTM D5185(m) >25	4	2	4
Lead	ppm	ASTM D5185(m) >100	<1	0	0
Copper	ppm	ASTM D5185(m) >200	17	2	<1
Tin	ppm	ASTM D5185(m) >25	<1	0	0
Antimony	ppm	ASTM D5185(m) >5	0	<1	0
Vanadium	ppm	ASTM D5185(m)	0	0	0
Beryllium	ppm	ASTM D5185(m)	0	0	0
Cadmium	ppm	ASTM D5185(m)	0	0	<1

ADDITIVES

	method	limit/base	current	history1	history2
Boron	ppm	ASTM D5185(m)	<1	2	2
Barium	ppm	ASTM D5185(m)	<1	0	0
Molybdenum	ppm	ASTM D5185(m)	0	0	0
Manganese	ppm	ASTM D5185(m)	<1	4	1
Magnesium	ppm	ASTM D5185(m)	1	8	15
Calcium	ppm	ASTM D5185(m)	▲ 73	▲ 277	▲ 562
Phosphorus	ppm	ASTM D5185(m)	359	391	354
Zinc	ppm	ASTM D5185(m)	3	2	2
Sulfur	ppm	ASTM D5185(m)	▲ 2498	▲ 1799	1792
Lithium	ppm	ASTM D5185(m)	<1	<1	0

CONTAMINANTS

	method	limit/base	current	history1	history2
Silicon	ppm	ASTM D5185(m) >50	27	26	19
Sodium	ppm	ASTM D5185(m)	3	<1	<1
Potassium	ppm	ASTM D5185(m) >20	0	2	2

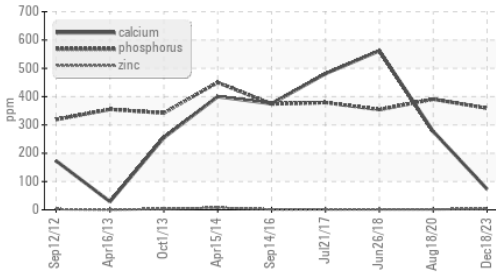
FLUID DEGRADATION

	method	limit/base	current	history1	history2
Acid Number (AN)	mg KOH/g	ASTM D974*	0.85	0.67	0.682

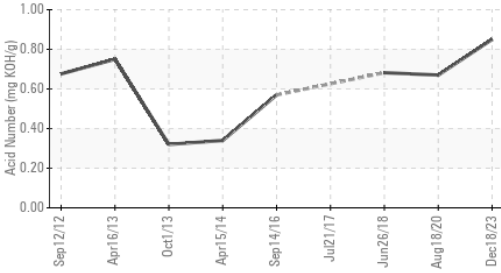


OIL ANALYSIS REPORT

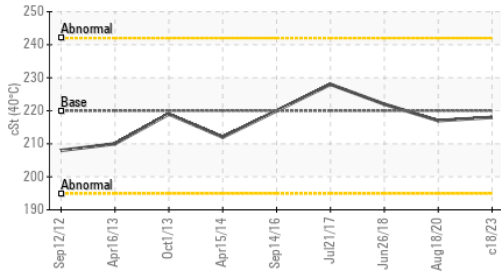
Additives



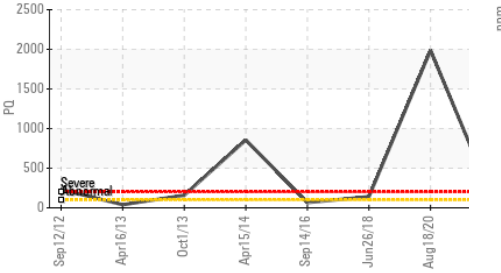
Acid Number



Viscosity @ 40°C



PQ

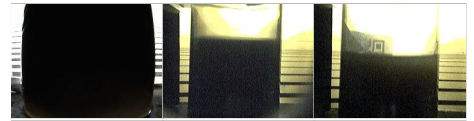


VISUAL	method	limit/base	current	history1	history2	
White Metal	scalar	Visual*	NONE	NONE	▲ MDHVV	VLITE
Yellow Metal	scalar	Visual*	NONE	NONE	NONE	NONE
Precipitate	scalar	Visual*	NONE	NONE	NONE	NONE
Silt	scalar	Visual*	NONE	NONE	NONE	NONE
Debris	scalar	Visual*	NONE	NONE	NONE	VLITE
Sand/Dirt	scalar	Visual*	NONE	NONE	NONE	NONE
Appearance	scalar	Visual*	NORML	NORML	NORML	NORML
Odor	scalar	Visual*	NORML	NORML	NORML	NORML
Emulsified Water	scalar	Visual*	>0.2	NEG	NEG	NEG
Free Water	scalar	Visual*		NEG	NEG	NEG

FLUID PROPERTIES	method	limit/base	current	history1	history2	
Visc @ 40°C	cSt	ASTM D7279(m)	220	218	217	222

SAMPLE IMAGES	method	limit/base	current	history1	history2
---------------	--------	------------	---------	----------	----------

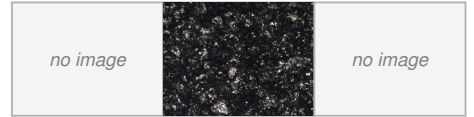
Color



Bottom

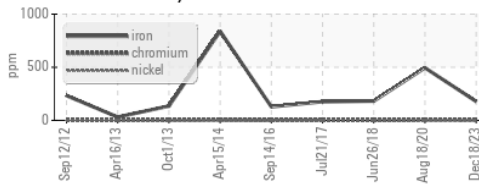


PrtFilter

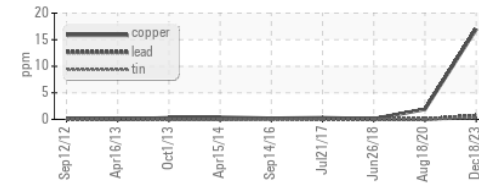


GRAPHS

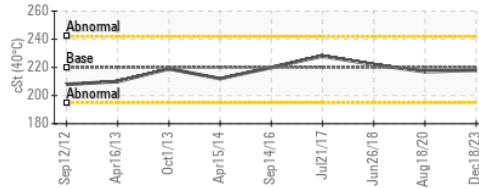
Ferrous Alloys



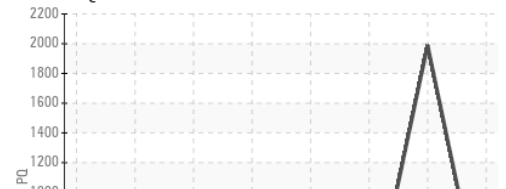
Non-ferrous Metals



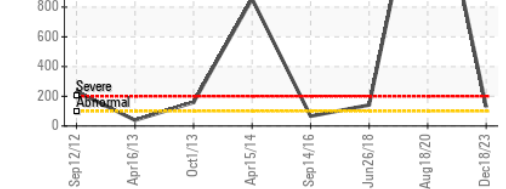
Viscosity @ 40°C



PQ



Acid Number



ISO 17025:2017
Accredited
Laboratory

Laboratory : WearCheck - C8-1175 Appleby Line, Burlington, ON L7L 5H9
Sample No. : WC0835498 **Received** : 04 Jan 2024
Lab Number : 02606635 **Diagnosed** : 05 Jan 2024
Unique Number : 5707721 **Diagnostician** : Kevin Marson
Test Package : IND 2 (Additional Tests: TAN Man)

CARMEUSE LIME CANADA LTD.
 BOX 1690,, HWY 17 EAST
 BLIND RIVER, ON
 CA P0R 1B0
 Contact: Rejean Baillargeon
 rejean.baillargeon@carmeusena.com
 T: (705)849-2201
 F: (705)849-2355

To discuss this sample report, contact Customer Service at 1-800-268-2131.
 Test denoted (*) outside scope of accreditation, (m) method modified, (e) tested at external lab.
 Validity of results and interpretation are based on the sample and information as supplied.