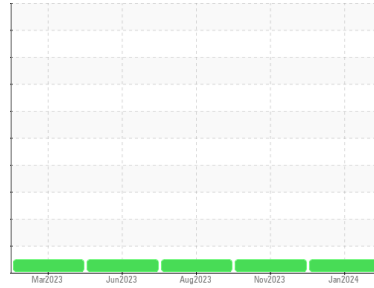




# OIL ANALYSIS REPORT

Sample Rating Trend

**NORMAL**



Area  
**[133480]**  
 Machine Id  
**FREEZER #2 INTERNAL**

Component  
**Gearbox**  
 Fluid  
**PETRO CANADA ENDURATEX EP 460 (6 LTR)**

## DIAGNOSIS

### Recommendation

Resample at the next service interval to monitor. Please specify the component make and model with your next sample.

### Wear

All component wear rates are normal.

### Contamination

There is no indication of any contamination in the oil.

### Fluid Condition

The AN level is acceptable for this fluid. The condition of the oil is suitable for further service.

SAMPLE INFORMATION		method	limit/base	current	history1	history2
Sample Number	Client Info			<b>WC0869289</b>	WC0869259	WC0829261
Sample Date	Client Info			<b>03 Jan 2024</b>	13 Nov 2023	14 Aug 2023
Machine Age	mths	Client Info		<b>0</b>	0	0
Oil Age	mths	Client Info		<b>0</b>	0	0
Oil Changed	Client Info			<b>N/A</b>	N/A	N/A
Sample Status				<b>NORMAL</b>	NORMAL	NORMAL

CONTAMINATION		method	limit/base	current	history1	history2
Water	WC Method		>0.2	<b>NEG</b>	NEG	NEG

WEAR METALS		method	limit/base	current	history1	history2
PQ		ASTM D8184*		<b>2</b>	2	0
Iron	ppm	ASTM D5185(m)	>200	<b>23</b>	16	14
Chromium	ppm	ASTM D5185(m)	>10	<b>0</b>	0	0
Nickel	ppm	ASTM D5185(m)	>10	<b>0</b>	0	0
Titanium	ppm	ASTM D5185(m)		<b>0</b>	0	0
Silver	ppm	ASTM D5185(m)		<b>0</b>	<1	0
Aluminum	ppm	ASTM D5185(m)	>25	<b>&lt;1</b>	<1	1
Lead	ppm	ASTM D5185(m)	>50	<b>0</b>	0	0
Copper	ppm	ASTM D5185(m)	>200	<b>&lt;1</b>	<1	<1
Tin	ppm	ASTM D5185(m)	>10	<b>0</b>	0	0
Antimony	ppm	ASTM D5185(m)	>5	<b>0</b>	0	0
Vanadium	ppm	ASTM D5185(m)		<b>0</b>	0	0
Beryllium	ppm	ASTM D5185(m)		<b>0</b>	0	0
Cadmium	ppm	ASTM D5185(m)		<b>0</b>	0	0

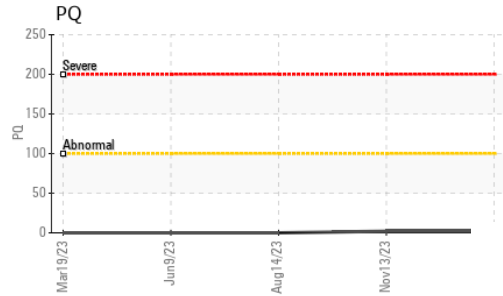
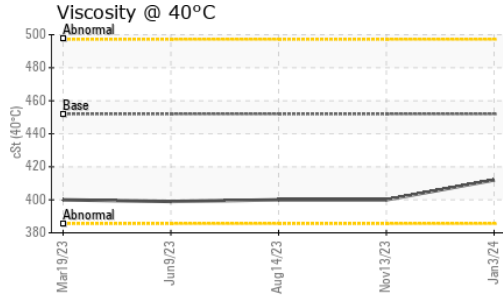
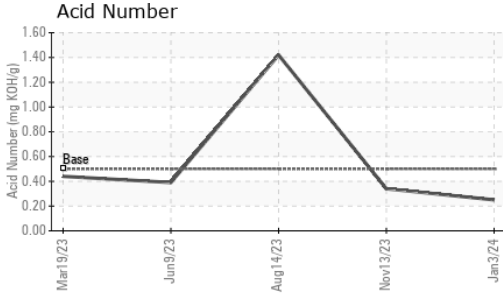
ADDITIVES		method	limit/base	current	history1	history2
Boron	ppm	ASTM D5185(m)	55	<b>0</b>	<1	<1
Barium	ppm	ASTM D5185(m)	0	<b>0</b>	<1	0
Molybdenum	ppm	ASTM D5185(m)	0	<b>0</b>	0	0
Manganese	ppm	ASTM D5185(m)	0	<b>0</b>	0	0
Magnesium	ppm	ASTM D5185(m)	2	<b>0</b>	0	0
Calcium	ppm	ASTM D5185(m)	6	<b>&lt;1</b>	2	2
Phosphorus	ppm	ASTM D5185(m)	240	<b>351</b>	356	390
Zinc	ppm	ASTM D5185(m)	3	<b>4</b>	5	5
Sulfur	ppm	ASTM D5185(m)	10310	<b>1166</b>	1050	1123
Lithium	ppm	ASTM D5185(m)		<b>3</b>	1	1

CONTAMINANTS		method	limit/base	current	history1	history2
Silicon	ppm	ASTM D5185(m)	>50	<b>4</b>	<1	4
Sodium	ppm	ASTM D5185(m)		<b>&lt;1</b>	0	<1
Potassium	ppm	ASTM D5185(m)	>20	<b>&lt;1</b>	0	<1

FLUID DEGRADATION		method	limit/base	current	history1	history2
Acid Number (AN)	mg KOH/g	ASTM D974*	0.5	<b>0.25</b>	0.34	1.42



# OIL ANALYSIS REPORT



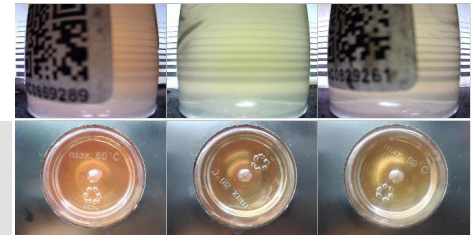
VISUAL	method	limit/base	current	history1	history2
White Metal	scalar	Visual*	NONE	NONE	NONE
Yellow Metal	scalar	Visual*	NONE	NONE	NONE
Precipitate	scalar	Visual*	NONE	NONE	NONE
Silt	scalar	Visual*	NONE	NONE	NONE
Debris	scalar	Visual*	NONE	NONE	NONE
Sand/Dirt	scalar	Visual*	NONE	NONE	NONE
Appearance	scalar	Visual*	NORML	NORML	NORML
Odor	scalar	Visual*	NORML	NORML	NORML
Emulsified Water	scalar	Visual*	>0.2	NEG	NEG
Free Water	scalar	Visual*		NEG	NEG

FLUID PROPERTIES	method	limit/base	current	history1	history2
Visc @ 40°C	cSt	ASTM D7279(m)	452	412	400

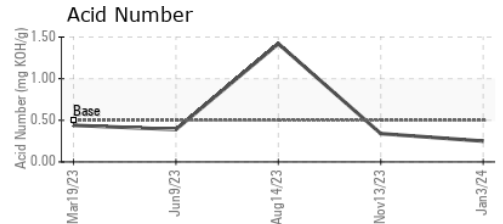
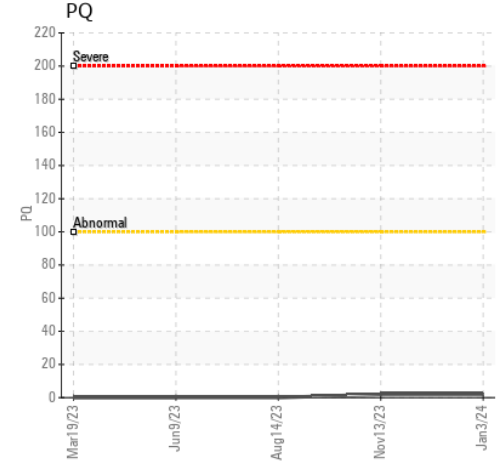
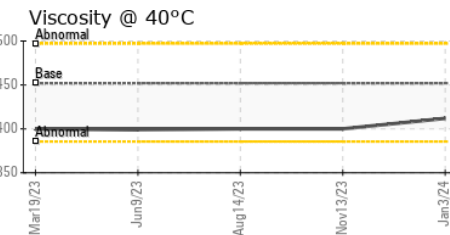
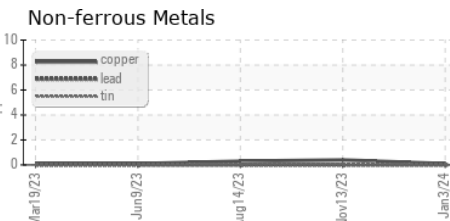
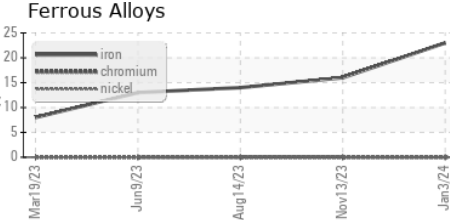
SAMPLE IMAGES	method	limit/base	current	history1	history2
---------------	--------	------------	---------	----------	----------

Color

Bottom



## GRAPHS



Laboratory : WearCheck - C8-1175 Appleby Line, Burlington, ON L7L 5H9  
 Sample No. : WC0869289      Recieved : 05 Jan 2024  
 Lab Number : 02606840      Diagnosed : 08 Jan 2024  
 Unique Number : 5707926      Diagnostician : Wes Davis  
 Test Package : IND 2

**GRAND RIVER FOODS**  
 190 VONDRAU DRIVE  
 CAMBRIDGE, ON  
 CA N3E 1B8  
 Contact: Ryan Shea  
 rshea@grandriverfoods.com  
 T: (519)653-3577  
 F:

To discuss this sample report, contact Customer Service at 1-800-268-2131.  
 Test denoted (\*) outside scope of accreditation, (m) method modified, (e) tested at external lab.  
 Validity of results and interpretation are based on the sample and information as supplied.