



GREASE ANALYSIS

Sample Rating Trend

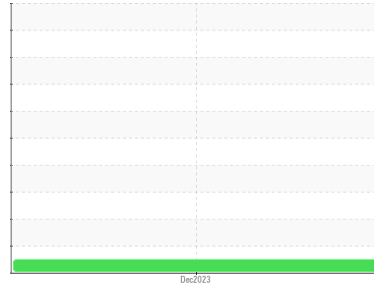
NORMAL



Machine Id ID FAN #4 DRIVE END HOUSING COVER

Component
Grease
Fluid

MOBIL MOBILITH SHC SERIES 100 (--- GAL)



DIAGNOSIS

Recommendation

Resample at the next service interval to monitor.

Wear

All component wear rates are normal. The ferrography results are normal indicating no abnormal wear in the system.

Grease Condition

Linear Sweep Voltammetry (RULER – ASTM D6971) testing indicates normal levels of anti-oxidants present in the oil. There was only a minor decrease in the oil bleed of the grease. The condition of the grease is acceptable for the time in service.

Contaminants

There is no indication of any contamination in the grease.

SAMPLE INFORMATION

	method	limit/base	current	history1	history2
Sample Number	Client Info		WC0896567	---	---
Sample Date	Client Info		14 Dec 2023	---	---
Machine Age	hrs	Client Info	0	---	---
Grease Age	hrs	Client Info	0	---	---
Grease Serviced	Client Info		N/A	---	---
Sample Status			NORMAL	---	---

WEAR METALS

	method	limit/base	current	history1	history2
PQ	ASTM D8184*	>200	610	---	---
Iron	ppm	ASTM D5185(m)	>250	489	---
Chromium	ppm	ASTM D5185(m)	>10	4	---
Nickel	ppm	ASTM D5185(m)	>5	<1	---
Cadmium	ppm	ASTM D5185(m)		0	---
Titanium	ppm	ASTM D5185(m)		0	---
Vanadium	ppm	ASTM D5185(m)		0	---
Lead	ppm	ASTM D5185(m)	>25	0	---
Copper	ppm	ASTM D5185(m)	>75	2	---
Tin	ppm	ASTM D5185(m)	>5	0	---
Silver	ppm	ASTM D5185(m)	>5	0	---

ADDITIVES

	method	limit/base	current	history1	history2
Boron	ppm	ASTM D5185(m)	0	0	---
Magnesium	ppm	ASTM D5185(m)	0	0	---
Manganese	ppm	ASTM D5185(m)	0	2	---
Molybdenum	ppm	ASTM D5185(m)	0	0	---
Phosphorus	ppm	ASTM D5185(m)	200	213	---
Zinc	ppm	ASTM D5185(m)	250	269	---
Antimony	ppm	ASTM D5185(m)	0	0	---

THICKENER/SOAP

	method	limit/base	current	history1	history2
Aluminum	ppm	ASTM D5185(m)	0	<1	---
Barium	ppm	ASTM D5185(m)	0	0	---
Calcium	ppm	ASTM D5185(m)	0	6	---
Sodium	ppm	ASTM D5185(m)	2	1	---
Lithium	ppm	ASTM D5185(m)	400	525	---
Sulfur	ppm	ASTM D5185(m)	750	769	---

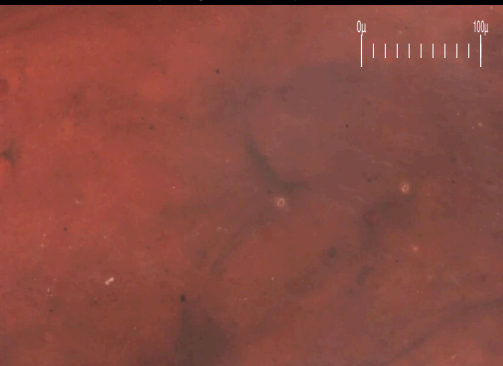
CONTAMINANTS

	method	limit/base	current	history1	history2
Silicon	ppm	ASTM D5185(m)	>150	6	---
Potassium	ppm	ASTM D5185(m)		<1	---
Water	%	ASTM D6304*	>0.1	0.063	---
ppm Water	ppm	ASTM D6304*	>1000	631	---

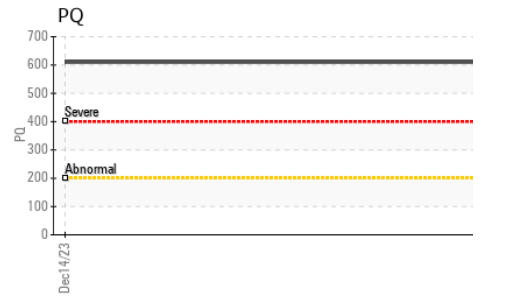
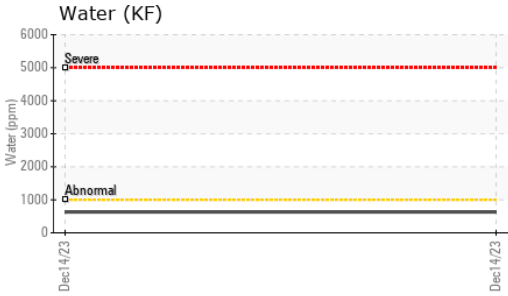
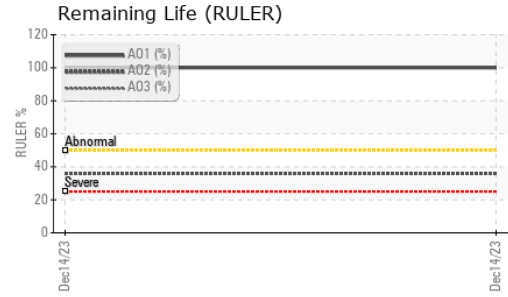
GREASE CONDITION

	method	limit/base	current	history1	history2
Grease Color	Visual*	red	Red	---	---
Texture	In-house*		Short fiber	---	---
NLGI Consistency	NLGI Scale	SKF Method*	2	2	---
Oil Separation (Bleed)	%	SKF Method*	>+/-25%	-11.8	---
Anti-Oxidant 1	%	ASTM D6971*	<25%	100	---
Anti-Oxidant 2	%	ASTM D6971*	<25%	36	---

Particle Filter (Magn: 200 x)

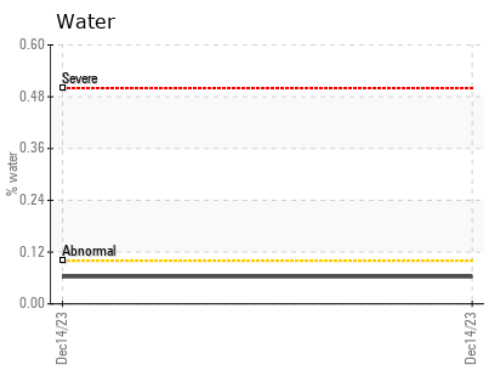
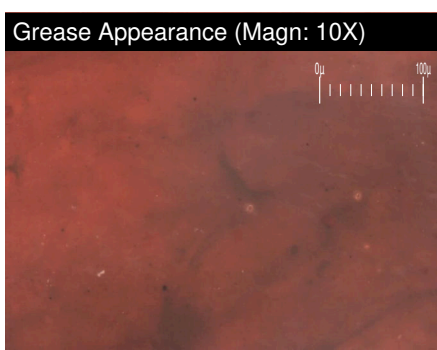
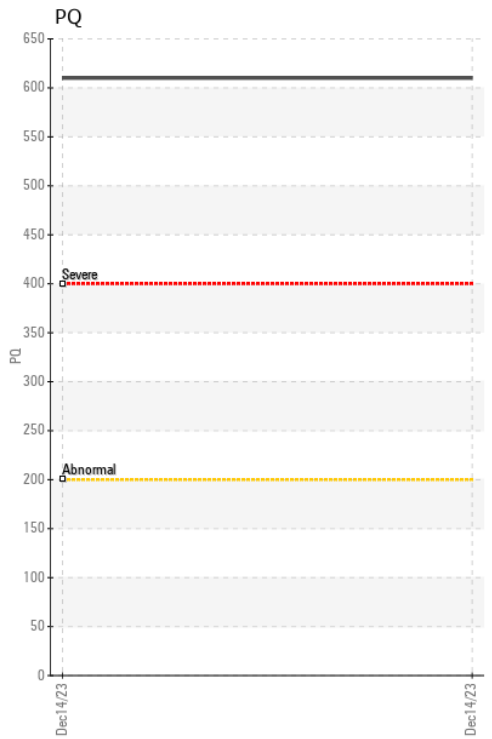
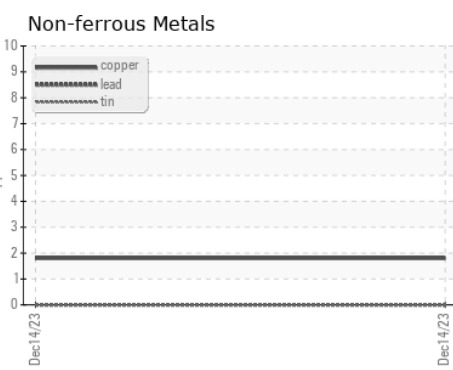
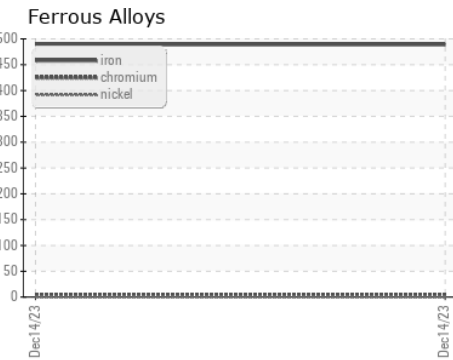


GREASE ANALYSIS



SAMPLE IMAGES	method	limit/base	current	history1	history2
Color				no image	no image
Bottom				no image	no image
PrtFilter				no image	no image

GRAPHS

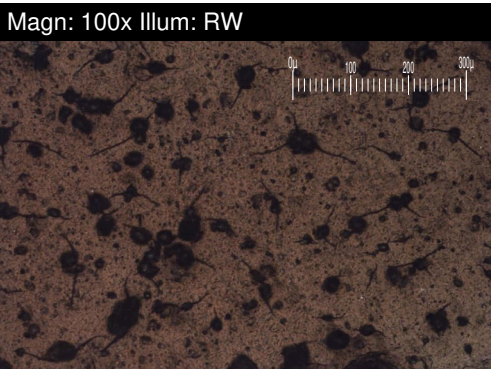
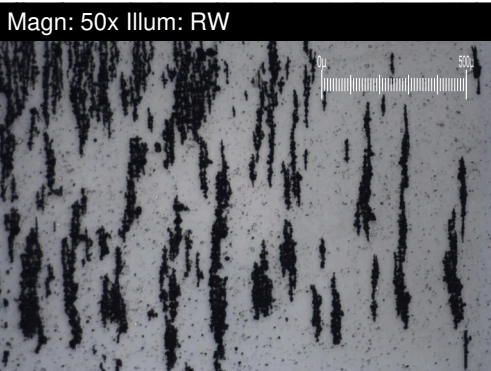
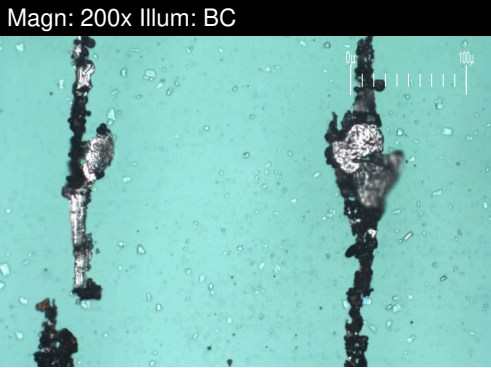


Laboratory : WearCheck - C8-1175 Appleby Line, Burlington, ON L7L 5H9 DUFFIN CREEK (YORK-DURHAM) WPCP
Sample No. : WC0896567 **Received** : 05 Jan 2024 **901 MCKAY ROAD**
Lab Number : 02606863 **Diagnosed** : 17 Jan 2024 **PICKERING, ON**
Unique Number : 5707949 **Diagnostician** : Bill Quesnel **CA L1W 3A3**
Test Package : GRS 3 (Additional Tests: BottomAnalysis, PrtCount, PrtFilter) **Contact: Al Roffey**
AL.ROFFEY@REGION.DURHAM.ON.CA
T: (905)683-9109
F: (905)686-3956

*To discuss this sample report, contact Customer Service at 1-800-268-2131.
 Test denoted (*) outside scope of accreditation, (m) method modified, (e) tested at external lab.
 Validity of results and interpretation are based on the sample and information as supplied.*

FERROGRAPHY REPORT

Machine Id
ID FAN #4 DRIVE END HOUSING COVER
 Component
Grease
 Fluid
MOBIL MOBILITH SHC SERIES 100 (--- GAL)



FERROGRAPHY		method	limit/base	current	history1	history2
Ferrous Rubbing	Scale 0-10	ASTM D7684*		3		
Ferrous Sliding	Scale 0-10	ASTM D7684*		2		
Ferrous Cutting	Scale 0-10	ASTM D7684*				
Ferrous Rolling	Scale 0-10	ASTM D7684*		2		
Ferrous Break-in	Scale 0-10	ASTM D7684*				
Ferrous Spheres	Scale 0-10	ASTM D7684*				
Ferrous Black Oxides	Scale 0-10	ASTM D7684*		3		
Ferrous Red Oxides	Scale 0-10	ASTM D7684*				
Ferrous Corrosive	Scale 0-10	ASTM D7684*				
Ferrous Other	Scale 0-10	ASTM D7684*				
Nonferrous Rubbing	Scale 0-10	ASTM D7684*				
Nonferrous Sliding	Scale 0-10	ASTM D7684*				
Nonferrous Cutting	Scale 0-10	ASTM D7684*				
Nonferrous Rolling	Scale 0-10	ASTM D7684*				
Nonferrous Other	Scale 0-10	ASTM D7684*				
Carbonaceous Material	Scale 0-10	ASTM D7684*				
Lubricant Degradation	Scale 0-10	ASTM D7684*				
Sand/Dirt	Scale 0-10	ASTM D7684*		2		
Fibres	Scale 0-10	ASTM D7684*				
Spheres	Scale 0-10	ASTM D7684*				
Other	Scale 0-10	ASTM D7684*		3		

WEAR

All component wear rates are normal.
 The ferrography results are normal indicating no abnormal wear in the system.

This page left intentionally blank