



# GREASE ANALYSIS

Sample Rating Trend

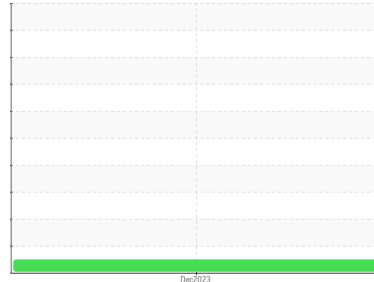
**NORMAL**



## Machine Id ID FAN #4 NON-DRIVE END BEARING

Component  
Non-Drive End Grease

Fluid  
MOBIL MOBILITH SHC SERIES 100 (--- GAL)



### DIAGNOSIS

#### Recommendation

Resample at the next service interval to monitor.

#### Wear

All component wear rates are normal. The ferrography results are normal indicating no abnormal wear in the system.

#### Grease Condition

Linear Sweep Voltammetry (RULER – ASTM D6971) testing indicates normal levels of anti-oxidants present in the oil. There was only a minor decrease in the oil bleed of the grease. The condition of the grease is acceptable for the time in service.

#### Contaminants

There is no indication of any contamination in the grease.

SAMPLE INFORMATION		method	limit/base	current	history1	history2
Sample Number	Client Info			<b>WC0896566</b>	---	---
Sample Date	Client Info			<b>14 Dec 2023</b>	---	---
Machine Age	hrs	Client Info		<b>0</b>	---	---
Grease Age	hrs	Client Info		<b>0</b>	---	---
Grease Serviced	Client Info			<b>N/A</b>	---	---
Sample Status				<b>NORMAL</b>	---	---

WEAR METALS		method	limit/base	current	history1	history2
PQ		ASTM D8184*	>200	<b>30</b>	---	---
Iron	ppm	ASTM D5185(m)	>250	<b>7</b>	---	---
Chromium	ppm	ASTM D5185(m)	>10	<b>0</b>	---	---
Nickel	ppm	ASTM D5185(m)	>5	<b>&lt;1</b>	---	---
Cadmium	ppm	ASTM D5185(m)		<b>0</b>	---	---
Titanium	ppm	ASTM D5185(m)		<b>0</b>	---	---
Vanadium	ppm	ASTM D5185(m)		<b>0</b>	---	---
Lead	ppm	ASTM D5185(m)	>25	<b>0</b>	---	---
Copper	ppm	ASTM D5185(m)	>75	<b>&lt;1</b>	---	---
Tin	ppm	ASTM D5185(m)	>5	<b>0</b>	---	---
Silver	ppm	ASTM D5185(m)	>5	<b>0</b>	---	---

ADDITIVES		method	limit/base	current	history1	history2
Boron	ppm	ASTM D5185(m)	0	<b>0</b>	---	---
Magnesium	ppm	ASTM D5185(m)	0	<b>&lt;1</b>	---	---
Manganese	ppm	ASTM D5185(m)	0	<b>0</b>	---	---
Molybdenum	ppm	ASTM D5185(m)	0	<b>0</b>	---	---
Phosphorus	ppm	ASTM D5185(m)	200	<b>215</b>	---	---
Zinc	ppm	ASTM D5185(m)	250	<b>297</b>	---	---
Antimony	ppm	ASTM D5185(m)	0	<b>0</b>	---	---

THICKENER/SOAP		method	limit/base	current	history1	history2
Aluminum	ppm	ASTM D5185(m)	0	<b>&lt;1</b>	---	---
Barium	ppm	ASTM D5185(m)	0	<b>0</b>	---	---
Calcium	ppm	ASTM D5185(m)	0	<b>2</b>	---	---
Sodium	ppm	ASTM D5185(m)	2	<b>2</b>	---	---
Lithium	ppm	ASTM D5185(m)	400	<b>481</b>	---	---
Sulfur	ppm	ASTM D5185(m)	750	<b>875</b>	---	---

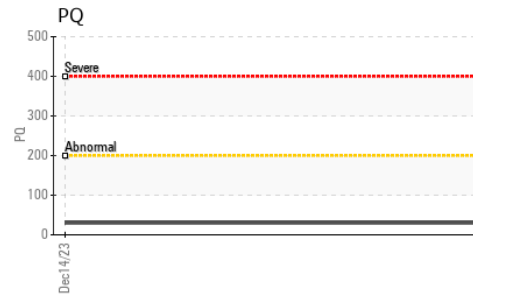
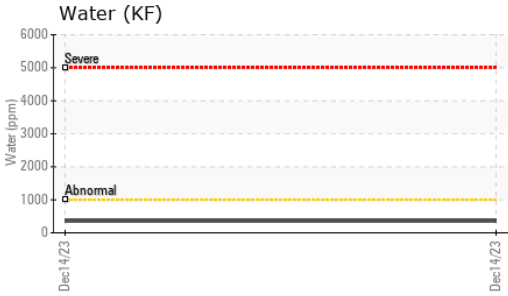
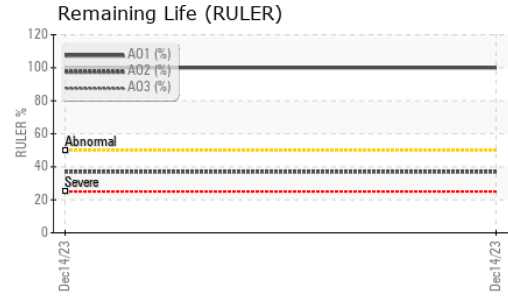
CONTAMINANTS		method	limit/base	current	history1	history2
Silicon	ppm	ASTM D5185(m)	>150	<b>&lt;1</b>	---	---
Potassium	ppm	ASTM D5185(m)		<b>&lt;1</b>	---	---
Water	%	ASTM D6304*	>0.1	<b>0.035</b>	---	---
ppm Water	ppm	ASTM D6304*	>1000	<b>356</b>	---	---

GREASE CONDITION		method	limit/base	current	history1	history2
Grease Color	Visual*	red		<b>Red</b>	---	---
Texture	In-house*			<b>Short fiber</b>	---	---
NLGI Consistency	NLGI Scale	SKF Method*	2	<b>2</b>	---	---
Oil Separation (Bleed)	%	SKF Method*	>+/-25%	<b>-5.9</b>	---	---
Anti-Oxidant 1	%	ASTM D6971*	<25%	<b>100</b>	---	---
Anti-Oxidant 2	%	ASTM D6971*	<25%	<b>37</b>	---	---

Particle Filter (Magn: 200 x)

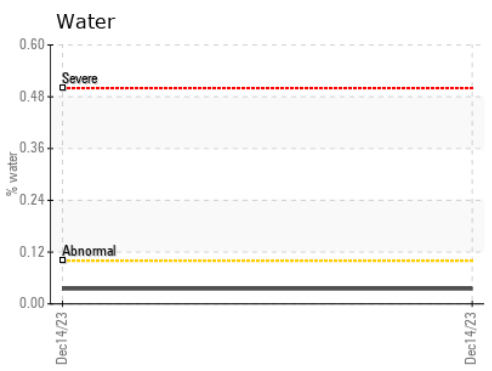
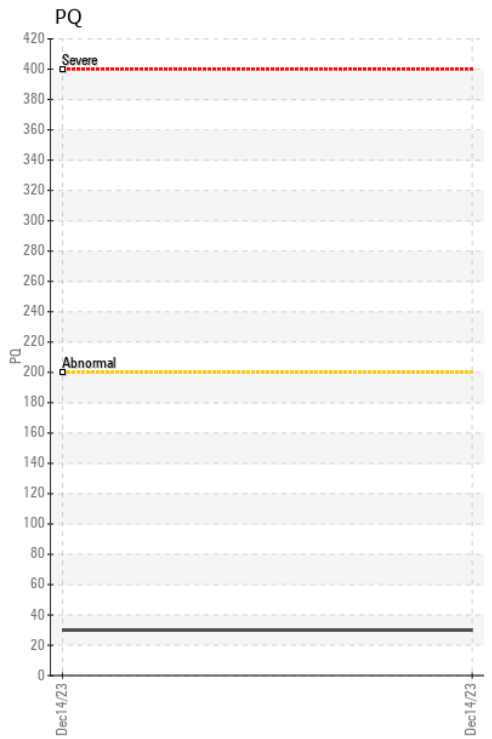
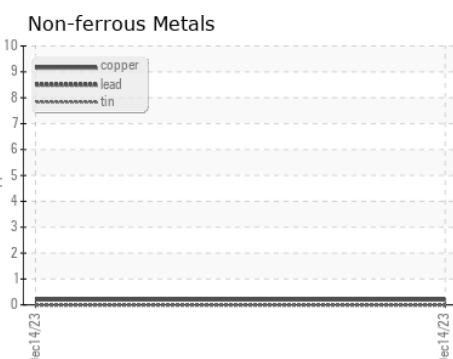
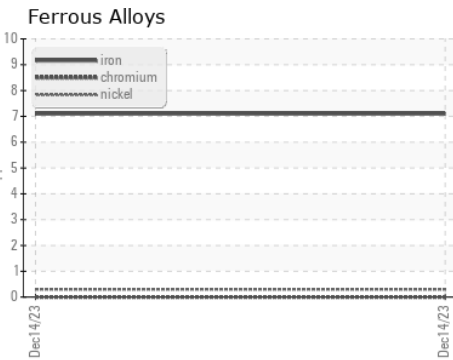


# GREASE ANALYSIS



SAMPLE IMAGES	method	limit/base	current	history1	history2
Color				no image	no image
Bottom				no image	no image
PrtFilter				no image	no image

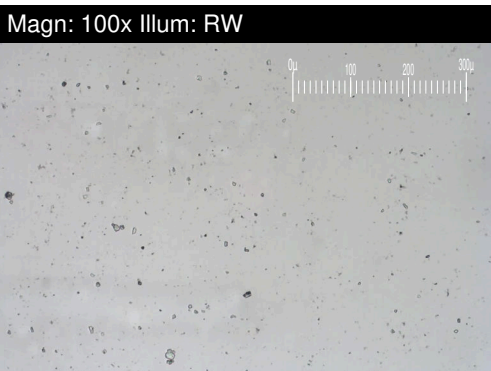
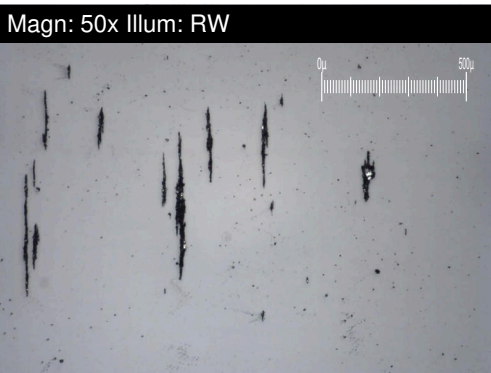
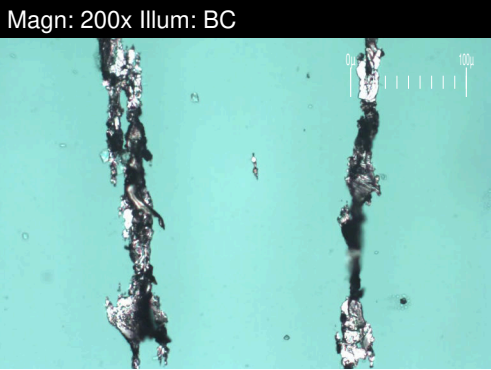
## GRAPHS



**Laboratory** : WearCheck - C8-1175 Appleby Line, Burlington, ON L7L 5H9 DUFFIN CREEK (YORK-DURHAM) WPCP  
**Sample No.** : WC0896566 **Received** : 05 Jan 2024 901 MCKAY ROAD  
**Lab Number** : **02606864** **Diagnosed** : 17 Jan 2024 PICKERING, ON  
**Unique Number** : 5707950 **Diagnostician** : Bill Quesnel CA L1W 3A3  
**Test Package** : GRS 3 ( Additional Tests: BottomAnalysis, PrtCount, PrtFilter ) Contact: Al Roffey  
AL.ROFFEY@REGION.DURHAM.ON.CA  
*To discuss this sample report, contact Customer Service at 1-800-268-2131.* T: (905)683-9109  
*Test denoted (\*) outside scope of accreditation, (m) method modified, (e) tested at external lab.* F: (905)686-3956  
*Validity of results and interpretation are based on the sample and information as supplied.*

# FERROGRAPHY REPORT

Machine Id  
**ID FAN #4 NON-DRIVE END BEARING**  
 Component  
**Non-Drive End Grease**  
 Fluid  
**MOBIL MOBILITH SHC SERIES 100 (--- GAL)**



FERROGRAPHY	method	limit/base	current	history1	history2
Ferrous Rubbing	Scale 0-10 ASTM D7684*		3		
Ferrous Sliding	Scale 0-10 ASTM D7684*		1		
Ferrous Cutting	Scale 0-10 ASTM D7684*				
Ferrous Rolling	Scale 0-10 ASTM D7684*		2		
Ferrous Break-in	Scale 0-10 ASTM D7684*				
Ferrous Spheres	Scale 0-10 ASTM D7684*				
Ferrous Black Oxides	Scale 0-10 ASTM D7684*		2		
Ferrous Red Oxides	Scale 0-10 ASTM D7684*				
Ferrous Corrosive	Scale 0-10 ASTM D7684*				
Ferrous Other	Scale 0-10 ASTM D7684*				
Nonferrous Rubbing	Scale 0-10 ASTM D7684*				
Nonferrous Sliding	Scale 0-10 ASTM D7684*				
Nonferrous Cutting	Scale 0-10 ASTM D7684*				
Nonferrous Rolling	Scale 0-10 ASTM D7684*				
Nonferrous Other	Scale 0-10 ASTM D7684*				
Carbonaceous Material	Scale 0-10 ASTM D7684*				
Lubricant Degradation	Scale 0-10 ASTM D7684*				
Sand/Dirt	Scale 0-10 ASTM D7684*		2		
Fibres	Scale 0-10 ASTM D7684*				
Spheres	Scale 0-10 ASTM D7684*				
Other	Scale 0-10 ASTM D7684*				

### WEAR

All component wear rates are normal.  
 The ferrography results are normal indicating no abnormal wear in the system.

*This page left intentionally blank*