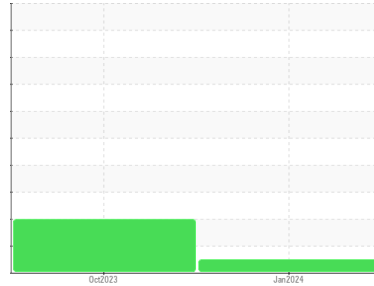




# FUEL REPORT

Sample Rating Trend

**NORMAL**



Machine Id  
**M10508**  
 Component  
**Diesel Fuel**  
 Fluid  
 {not provided} (--- GAL)

## DIAGNOSIS

### Recommendation

This is a baseline read-out on the submitted sample.

### Corrosion

{not applicable}

### Contaminants

ISO Cleanliness Code (ISO 4406:1999): 14/13/10;  
 Cumulative particle counts >4µm = 114, >6µm = 42,  
 >14µm = 7, >21µm = 2, >38µm = 0, >71µm = 0.

### Fuel Condition

{not applicable}

SAMPLE INFORMATION		method	limit/base	current	history1	history2
Sample Number	Client Info			<b>WC0809068</b>	WC0809064	---
Sample Date	Client Info			<b>03 Jan 2024</b>	23 Oct 2023	---
Machine Age	hrs	Client Info		<b>0</b>	0	---
Sample Status				<b>NORMAL</b>	ABNORMAL	---

PHYSICAL PROPERTIES		method	limit/base	current	history1	history2
Specific Gravity		ASTM D1298*		<b>0.748</b>	---	---
Fuel Color	text	Visual Screen*		<b>Clear</b>	---	---
Pensky-Martens Flash Point	°C	ASTM D7215*		<b>74.9</b>	---	---

DISTILLATION		method	limit/base	current	history1	history2
Initial Boiling Point	°C	ASTM D2887*		<b>188</b>	---	---
5% Distillation Point	°C	ASTM D2887*		<b>186</b>	---	---
10% Distill Point	°C	ASTM D2887*		<b>182</b>	---	---
15% Distillation Point	°C	ASTM D2887*		<b>181</b>	---	---
20% Distill Point	°C	ASTM D2887*		<b>180</b>	---	---
30% Distill Point	°C	ASTM D2887*		<b>178</b>	---	---
40% Distill Point	°C	ASTM D2887*		<b>178</b>	---	---
50% Distill Point	°C	ASTM D2887*		<b>178</b>	---	---
60% Distill Point	°C	ASTM D2887*		<b>178</b>	---	---
70% Distill Point	°C	ASTM D2887*		<b>177</b>	---	---
80% Distill Point	°C	ASTM D2887*		<b>179</b>	---	---
85% Distillation Point	°C	ASTM D2887*		<b>180</b>	---	---
90% Distill Point	°C	ASTM D2887*		<b>181</b>	---	---
95% Distillation Point	°C	ASTM D2887*		<b>182</b>	---	---
Final Boiling Point	°C	ASTM D2887*		<b>215</b>	---	---

IGNITION QUALITY		method	limit/base	current	history1	history2
API Gravity		ASTM D1298*		<b>57</b>	---	---
Cetane Index		ASTM D4737*	<40.0	<b>65</b>	---	---

FLUID CLEANLINESS		method	limit/base	current	history1	history2
Particles >4µm		ASTM D7647	>2500	<b>114</b>	▲ 5318	---
Particles >6µm		ASTM D7647	>640	<b>42</b>	▲ 1940	---
Particles >14µm		ASTM D7647	>80	<b>7</b>	▲ 202	---
Particles >21µm		ASTM D7647	>20	<b>2</b>	▲ 54	---
Particles >38µm		ASTM D7647	>4	<b>0</b>	2	---
Particles >71µm		ASTM D7647	>3	<b>0</b>	0	---
Oil Cleanliness		ISO 4406 (c)	>18/16/13	<b>14/13/10</b>	▲ 20/18/15	---

## SAMPLE IMAGES

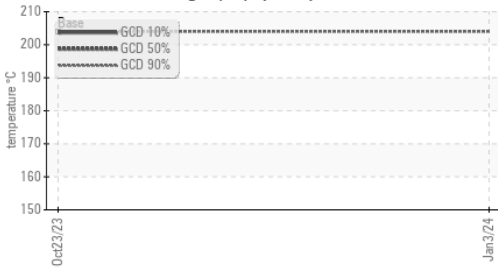
method	limit/base	current	history1	history2
Color				no image
Bottom				no image



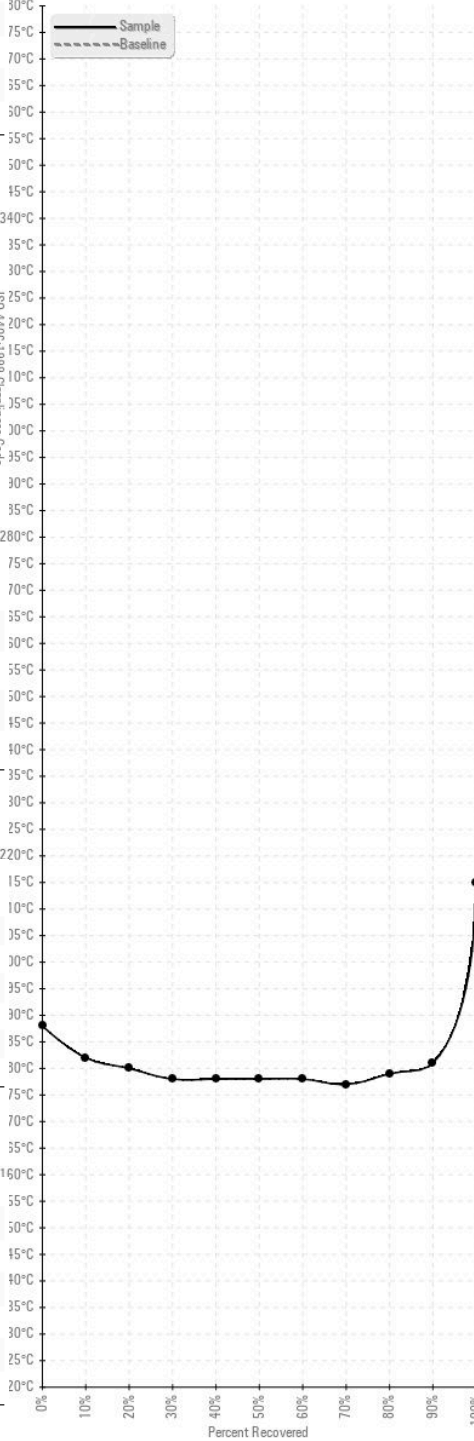
# FUEL REPORT

## GRAPHS

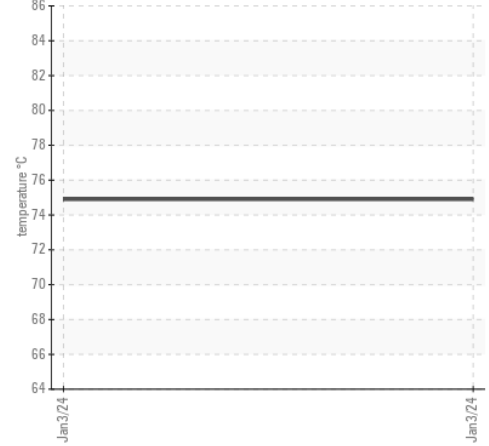
### Gas Chromatography (GCD)



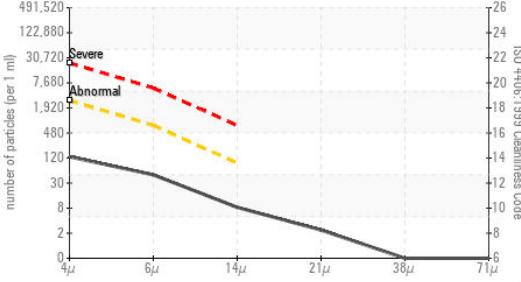
### Fuel Distillation Curve



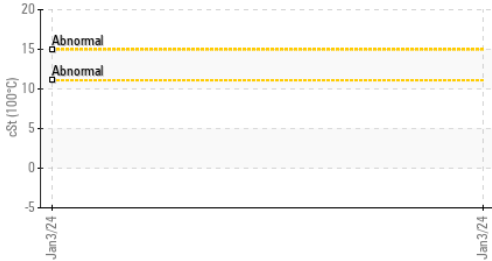
### Pensky-Martens Flash Point (°C)



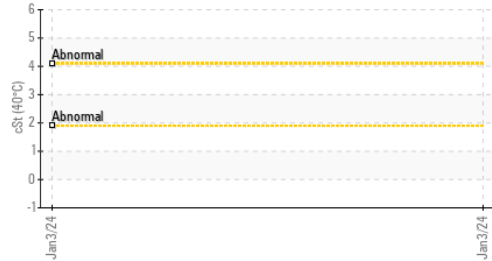
### Particle Count



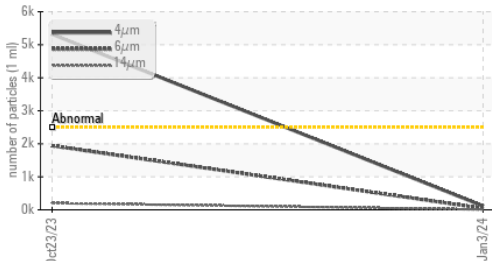
### Viscosity @ 100°C



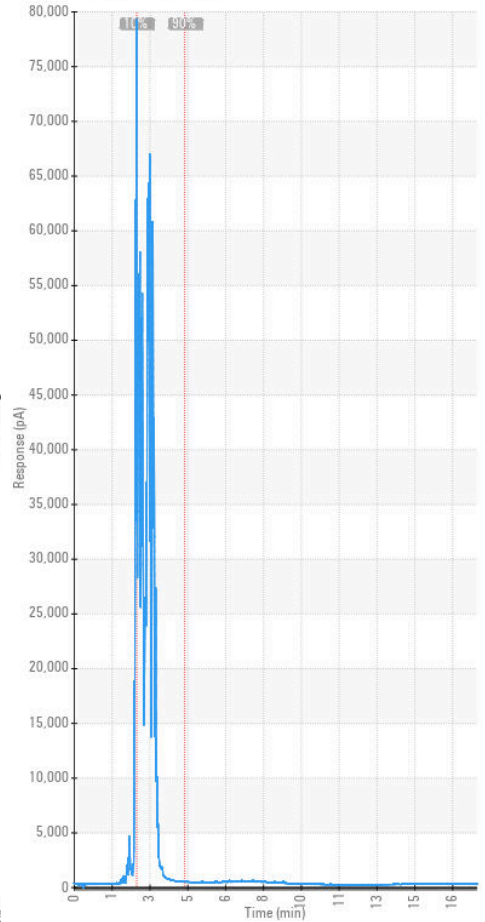
### Viscosity @ 40°C



### Particle Trend



### GCD Spectrum



ISO 17025:2017  
Accredited  
Laboratory

**Laboratory** : WearCheck - C8-1175 Appleby Line, Burlington, ON L7L 5H9 **HITACHI TRUCK MANUFACTURING**  
**Sample No.** : WC0809068 **Received** : 08 Jan 2024 **200 WOODLAWN ROAD WEST**  
**Lab Number** : 02607334 **Diagnosed** : 16 Jan 2024 **GUELPH, ON**  
**Unique Number** : 5708420 **Diagnostician** : Kevin Marson **CA N1H 1B6**  
**Test Package** : TEST ( Additional Tests: API, CC Flash, Cetane, Fuel, GC-PercFuel, GCD, ICP, KF, KV100, KV40, PriCou **Contact: Larry Whale**

To discuss this sample report, contact Customer Service at 1-800-268-2131.

Test denoted (\*) outside scope of accreditation, (m) method modified, (e) tested at external lab.

Validity of results and interpretation are based on the sample and information as supplied.

whale@hitachitruck.com

T: (519)826-5586

F: (519)826-5545