



# FUEL REPORT

Sample Rating Trend

**NORMAL**



Machine Id  
**105T01**  
Component  
**Diesel Fuel**  
Fluid  
{not provided} (--- GAL)



## DIAGNOSIS

### Recommendation

This is a baseline read-out on the submitted sample.

### Corrosion

{not applicable}

### Contaminants

ISO Cleanliness Code (ISO 4406:1999): 17/15/12;  
Cumulative particle counts >4µm = 727, >6µm = 253, >14µm = 28, >21µm = 7, >38µm = 1, >71µm = 0.

### Fuel Condition

{not applicable}

## SAMPLE INFORMATION

method	limit/base	current	history1	history2
Sample Number	Client Info	<b>WC0876938</b>	---	---
Sample Date	Client Info	<b>02 Jan 2024</b>	---	---
Machine Age	hrs	Client Info	<b>4</b>	---
Sample Status			<b>NORMAL</b>	---

## PHYSICAL PROPERTIES

method	limit/base	current	history1	history2
Specific Gravity	ASTM D1298*	<b>0.748</b>	---	---
Fuel Color	text	Visual Screen*	<b>Clear</b>	---
Pensky-Martens Flash Point	°C	ASTM D7215*	<b>74.6</b>	---

## DISTILLATION

method	limit/base	current	history1	history2
Initial Boiling Point	°C	ASTM D2887*	<b>188</b>	---
5% Distillation Point	°C	ASTM D2887*	<b>186</b>	---
10% Distill Point	°C	ASTM D2887*	<b>182</b>	---
15% Distillation Point	°C	ASTM D2887*	<b>181</b>	---
20% Distill Point	°C	ASTM D2887*	<b>180</b>	---
30% Distill Point	°C	ASTM D2887*	<b>178</b>	---
40% Distill Point	°C	ASTM D2887*	<b>178</b>	---
50% Distill Point	°C	ASTM D2887*	<b>178</b>	---
60% Distill Point	°C	ASTM D2887*	<b>177</b>	---
70% Distill Point	°C	ASTM D2887*	<b>177</b>	---
80% Distill Point	°C	ASTM D2887*	<b>178</b>	---
85% Distillation Point	°C	ASTM D2887*	<b>179</b>	---
90% Distill Point	°C	ASTM D2887*	<b>180</b>	---
95% Distillation Point	°C	ASTM D2887*	<b>181</b>	---
Final Boiling Point	°C	ASTM D2887*	<b>204</b>	---

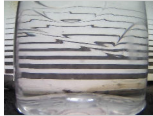
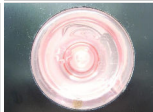
## IGNITION QUALITY

method	limit/base	current	history1	history2
API Gravity	ASTM D1298*	<b>57</b>	---	---
Cetane Index	ASTM D4737*	<40.0	<b>65</b>	---

## FLUID CLEANLINESS

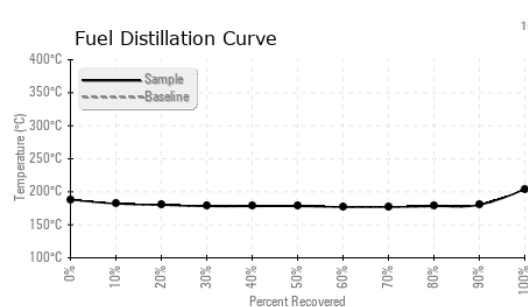
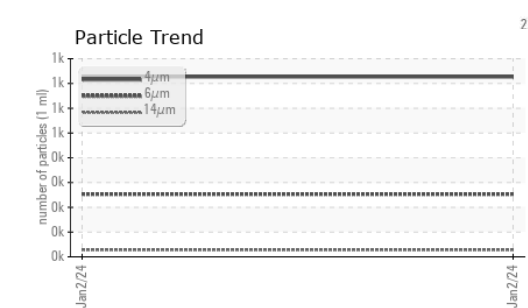
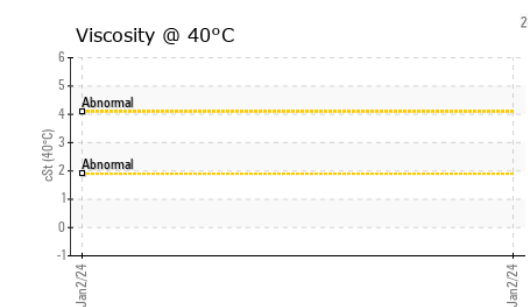
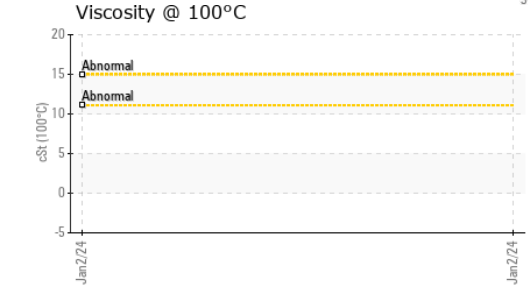
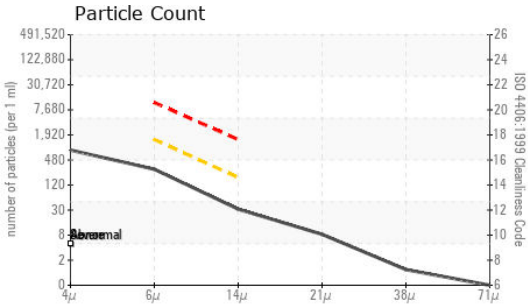
method	limit/base	current	history1	history2
Particles >4µm	ASTM D7647	<b>727</b>	---	---
Particles >6µm	ASTM D7647	>1300	<b>253</b>	---
Particles >14µm	ASTM D7647	>160	<b>28</b>	---
Particles >21µm	ASTM D7647	>40	<b>7</b>	---
Particles >38µm	ASTM D7647	>10	<b>1</b>	---
Particles >71µm	ASTM D7647	>3	<b>0</b>	---
Oil Cleanliness	ISO 4406 (c)	>--/17/14	<b>17/15/12</b>	---

## SAMPLE IMAGES

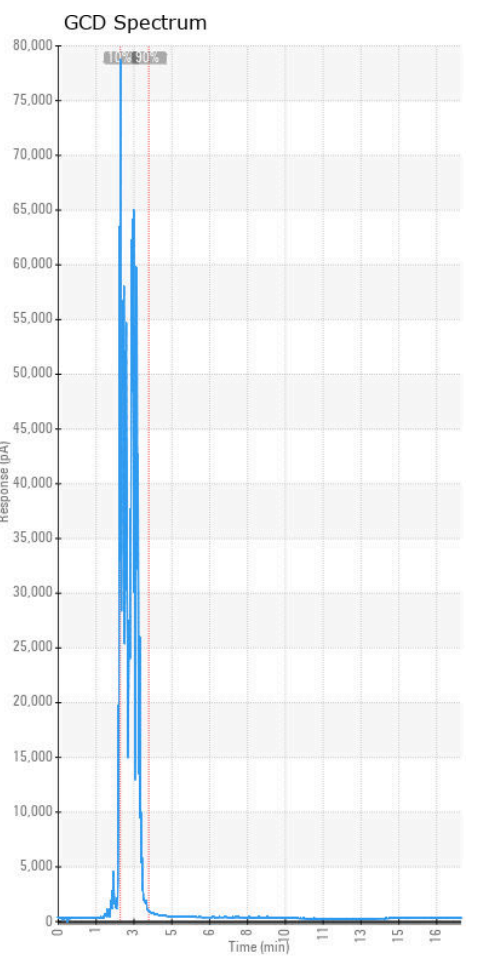
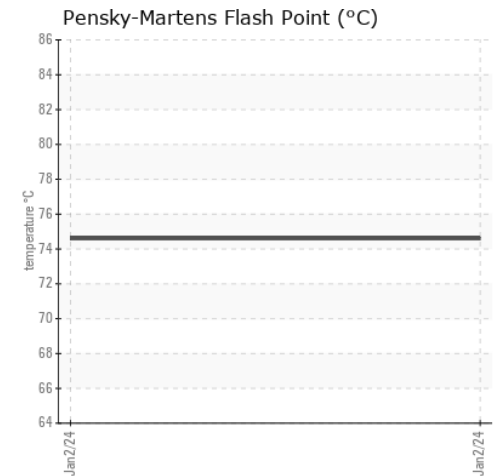
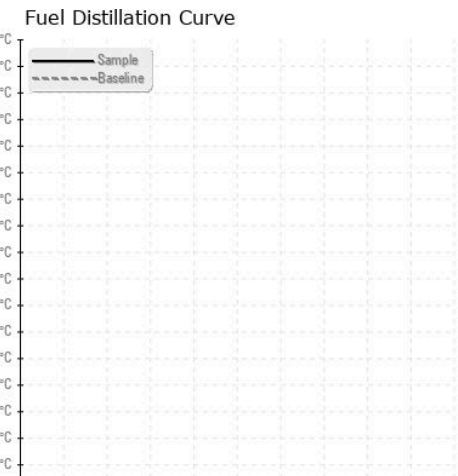
method	limit/base	current	history1	history2
Color			no image	no image
Bottom			no image	no image



# FUEL REPORT



## GRAPHS



**Laboratory** : WearCheck - C8-1175 Appleby Line, Burlington, ON L7L 5H9 **HITACHI TRUCK MANUFACTURING**  
**Sample No.** : WC0876938 **Received** : 08 Jan 2024 **200 WOODLAWN ROAD WEST**  
**Lab Number** : 02607335 **Diagnosed** : 17 Jan 2024 **GUELPH, ON**  
**Unique Number** : 5708421 **Diagnostician** : Kevin Marson **CA N1H 1B6**  
**Test Package** : TEST ( Additional Tests: API, CC Flash, Cetane, Fuel, GC-PercFuel, GCD, ICP, KF, KV100, KV40, PriCou **Contact: Larry Whale**  
*To discuss this sample report, contact Customer Service at 1-800-268-2131.* **lwhale@hitachitruck.com**  
*Test denoted (\*) outside scope of accreditation, (m) method modified, (e) tested at external lab.* **T: (519)826-5586**  
*Validity of results and interpretation are based on the sample and information as supplied.* **F: (519)826-5545**