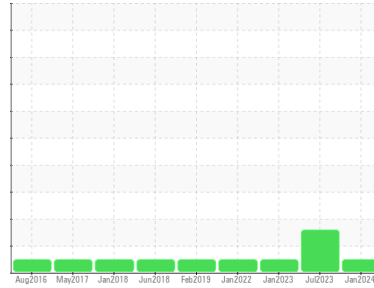




# OIL ANALYSIS REPORT

Sample Rating Trend



**NORMAL**



Area  
**31 WOODROOM**  
 Machine Id  
**DEBARKER #4 SECTION DRIVE (S/N 315404)**  
 Component  
**Gearbox**  
 Fluid  
**MOBIL SHC 629 (11 GAL)**

## DIAGNOSIS

### Recommendation

Resample at the next service interval to monitor.

### Wear

All component wear rates are normal.

### Contamination

There is no indication of any contamination in the oil.

### Fluid Condition

The AN level is acceptable for this fluid. The condition of the oil is suitable for further service.

SAMPLE INFORMATION		method	limit/base	current	history1	history2
Sample Number	Client Info			<b>WC</b>	WC	WC
Sample Date	Client Info			<b>03 Jan 2024</b>	05 Jul 2023	05 Jan 2023
Machine Age	hrs	Client Info		<b>0</b>	0	0
Oil Age	hrs	Client Info		<b>0</b>	0	0
Oil Changed	Client Info			<b>N/A</b>	N/A	N/A
Sample Status				<b>NORMAL</b>	ABNORMAL	NORMAL

CONTAMINATION		method	limit/base	current	history1	history2
Water	WC Method		>0.2	<b>NEG</b>	NEG	NEG

WEAR METALS		method	limit/base	current	history1	history2
PQ		ASTM D8184*		<b>23</b>	30	25
Iron	ppm	ASTM D5185(m)	>200	<b>62</b>	60	59
Chromium	ppm	ASTM D5185(m)	>15	<b>0</b>	<1	0
Nickel	ppm	ASTM D5185(m)	>15	<b>&lt;1</b>	0	<1
Titanium	ppm	ASTM D5185(m)		<b>0</b>	0	<1
Silver	ppm	ASTM D5185(m)		<b>0</b>	0	0
Aluminum	ppm	ASTM D5185(m)	>25	<b>&lt;1</b>	<1	<1
Lead	ppm	ASTM D5185(m)	>100	<b>0</b>	0	0
Copper	ppm	ASTM D5185(m)	>200	<b>&lt;1</b>	<1	0
Tin	ppm	ASTM D5185(m)	>25	<b>0</b>	0	0
Antimony	ppm	ASTM D5185(m)	>5	<b>0</b>	0	<1
Vanadium	ppm	ASTM D5185(m)		<b>0</b>	0	0
Beryllium	ppm	ASTM D5185(m)		<b>0</b>	0	0
Cadmium	ppm	ASTM D5185(m)		<b>0</b>	0	0

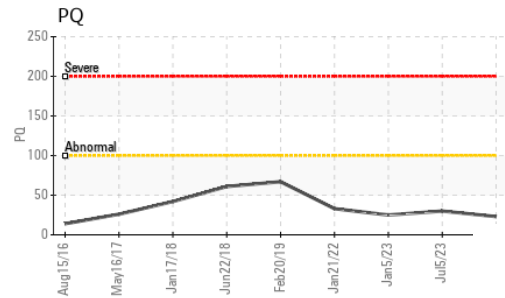
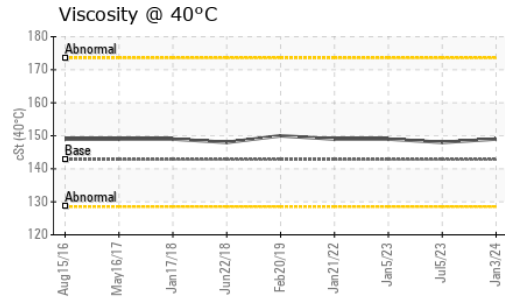
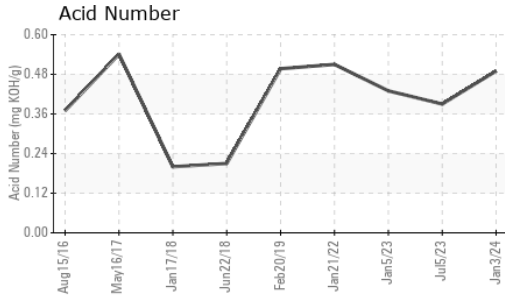
ADDITIVES		method	limit/base	current	history1	history2
Boron	ppm	ASTM D5185(m)		<b>&lt;1</b>	<1	<1
Barium	ppm	ASTM D5185(m)		<b>0</b>	0	0
Molybdenum	ppm	ASTM D5185(m)		<b>0</b>	<1	0
Manganese	ppm	ASTM D5185(m)		<b>0</b>	<1	<1
Magnesium	ppm	ASTM D5185(m)		<b>2</b>	3	3
Calcium	ppm	ASTM D5185(m)		<b>5</b>	6	5
Phosphorus	ppm	ASTM D5185(m)		<b>449</b>	486	496
Zinc	ppm	ASTM D5185(m)		<b>4</b>	6	5
Sulfur	ppm	ASTM D5185(m)		<b>63</b>	165	390
Lithium	ppm	ASTM D5185(m)		<b>&lt;1</b>	<1	<1

CONTAMINANTS		method	limit/base	current	history1	history2
Silicon	ppm	ASTM D5185(m)	>50	<b>19</b>	19	20
Sodium	ppm	ASTM D5185(m)		<b>0</b>	<1	0
Potassium	ppm	ASTM D5185(m)	>20	<b>&lt;1</b>	<1	<1

FLUID DEGRADATION		method	limit/base	current	history1	history2
Acid Number (AN)	mg KOH/g	ASTM D974*		<b>0.49</b>	0.39	0.43



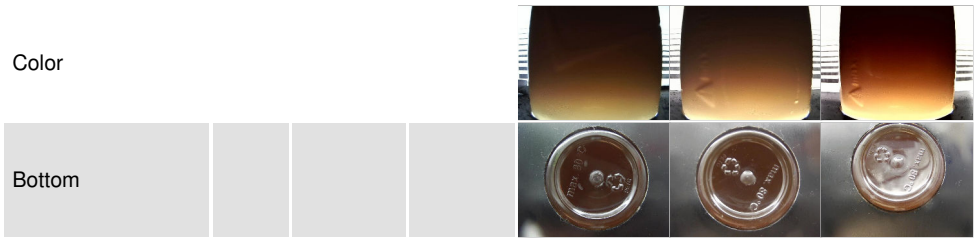
# OIL ANALYSIS REPORT



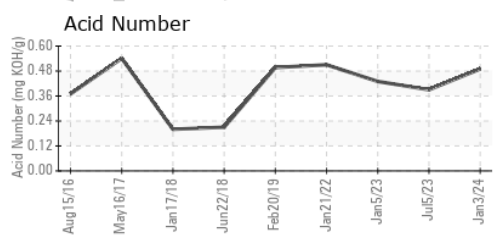
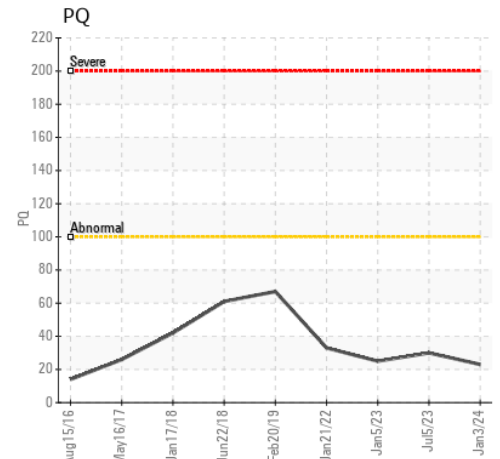
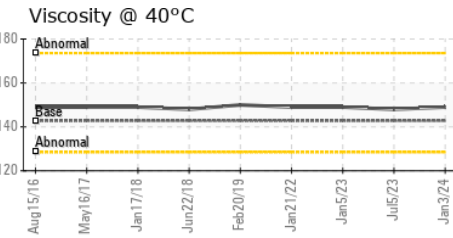
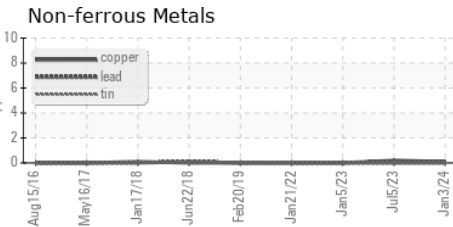
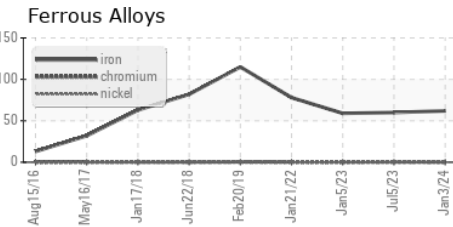
VISUAL	method	limit/base	current	history1	history2
White Metal	scalar	Visual*	NONE	NONE	NONE
Yellow Metal	scalar	Visual*	NONE	NONE	NONE
Precipitate	scalar	Visual*	NONE	NONE	NONE
Silt	scalar	Visual*	NONE	NONE	NONE
Debris	scalar	Visual*	NONE	NONE	NONE
Sand/Dirt	scalar	Visual*	NONE	NONE	NONE
Appearance	scalar	Visual*	NORML	NORML	NORML
Odor	scalar	Visual*	NORML	NORML	NORML
Emulsified Water	scalar	Visual*	>0.2	NEG	.2%
Free Water	scalar	Visual*		NEG	▲ 1%

FLUID PROPERTIES	method	limit/base	current	history1	history2
Visc @ 40°C	cSt	ASTM D7279(m)	142.8	149	148

SAMPLE IMAGES	method	limit/base	current	history1	history2
---------------	--------	------------	---------	----------	----------



## GRAPHS



Laboratory : WearCheck - C8-1175 Appleby Line, Burlington, ON L7L 5H9  
 Sample No. : WC  
 Lab Number : 02607607  
 Unique Number : 5708693  
 Test Package : IND 2 ( Additional Tests: TAN Man )

AV GROUP NB INC.  
 103 PINDER ROAD,, NACKAWIC MILL  
 NACKAWIC, NB  
 CA E6G 1W4  
 Contact: Basil Fadulalla  
 basil.fadulalla@adityabirla.com

To discuss this sample report, contact Customer Service at 1-800-268-2131.  
 Test denoted (\*) outside scope of accreditation, (m) method modified, (e) tested at external lab.  
 Validity of results and interpretation are based on the sample and information as supplied.