



# FUEL REPORT

Sample Rating Trend

WEAR

Area  
**[99923]**  
 Machine Id  
**PENTHOUSE**  
 Component  
**Auxiliary Diesel Fuel**  
 Fluid  
**No.2 DIESEL FUEL (LOW-SULPHUR) (--- GAL)**



## DIAGNOSIS

### Recommendation

We advise that you filter this fluid before use. We recommend you service the filters on this component. We recommend an early resample to monitor this condition.

### Corrosion

Lead ppm levels are abnormal. The high metal levels indicate corrosion in the system.

### Contaminants

There is a moderate amount of silt (particulates < 14 microns in size) present in the fuel. The water content is negligible.

### Fuel Condition

All laboratory tests indicate that this sample meets specifications for No.2 diesel fuel, low sulfur (US EPA/CGSB-3.517-3 type B). The fuel is still serviceable provided that the contaminant(s) can be reduced to acceptable levels.

## SAMPLE INFORMATION

method	limit/base	current	history1	history2
Sample Number	Client Info	<b>CU0019836</b>	---	---
Sample Date	Client Info	<b>16 Dec 2023</b>	---	---
Machine Age	hrs Client Info	<b>170</b>	---	---
Sample Status		<b>ABNORMAL</b>	---	---

## PHYSICAL PROPERTIES

method	limit/base	current	history1	history2	
Specific Gravity	ASTM D1298*	0.839	<b>0.826</b>	---	---
Fuel Color	text Visual Screen*	Yllow	<b>DkGry</b>	---	---
Visc @ 40°C	cSt ASTM D7279(m)	3.0	<b>2</b>	---	---
Pensky-Martens Flash Point	°C ASTM D7215*	52	<b>54.9</b>	---	---

## SULFUR CONTENT

method	limit/base	current	history1	history2	
Sulfur	ppm ASTM D5185(m)	250	<b>48</b>	---	---

## DISTILLATION

method	limit/base	current	history1	history2	
Initial Boiling Point	°C ASTM D2887*	165	<b>164</b>	---	---
5% Distillation Point	°C ASTM D2887*		<b>184</b>	---	---
10% Distill Point	°C ASTM D2887*	201	<b>194</b>	---	---
15% Distillation Point	°C ASTM D2887*		<b>201</b>	---	---
20% Distill Point	°C ASTM D2887*	216	<b>208</b>	---	---
30% Distill Point	°C ASTM D2887*	230	<b>221</b>	---	---
40% Distill Point	°C ASTM D2887*	243	<b>233</b>	---	---
50% Distill Point	°C ASTM D2887*	255	<b>245</b>	---	---
60% Distill Point	°C ASTM D2887*	267	<b>259</b>	---	---
70% Distill Point	°C ASTM D2887*	280	<b>272</b>	---	---
80% Distill Point	°C ASTM D2887*	295	<b>288</b>	---	---
85% Distillation Point	°C ASTM D2887*		<b>299</b>	---	---
90% Distill Point	°C ASTM D2887*	310	<b>310</b>	---	---
95% Distillation Point	°C ASTM D2887*		<b>330</b>	---	---
Final Boiling Point	°C ASTM D2887*	341	<b>361</b>	---	---

## IGNITION QUALITY

method	limit/base	current	history1	history2	
API Gravity	ASTM D1298*	37.7	<b>39</b>	---	---
Cetane Index	ASTM D4737*	<40.0	<b>50</b>	---	---

## CONTAMINANTS

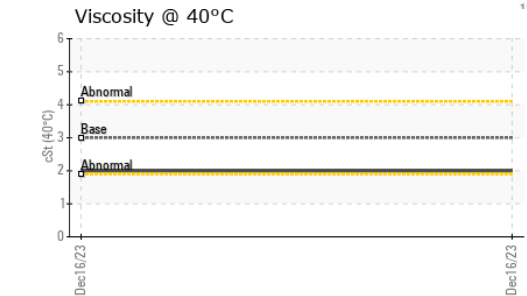
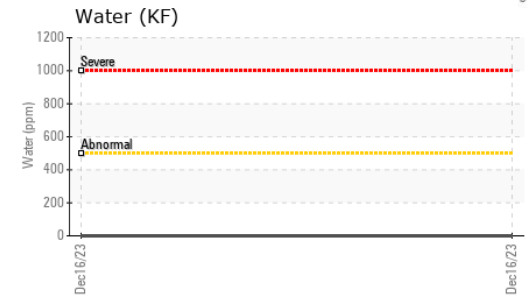
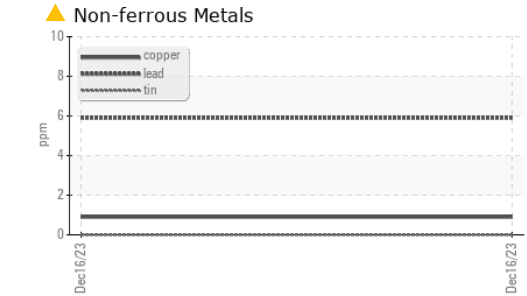
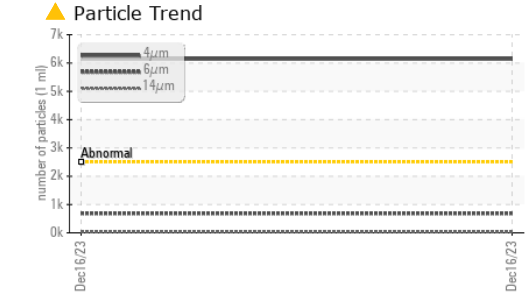
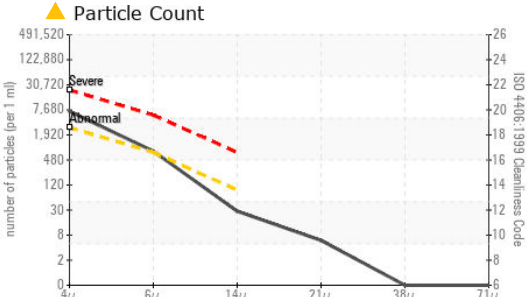
method	limit/base	current	history1	history2	
Silicon	ppm ASTM D5185(m)	<1.0	<b>0</b>	---	---
Sodium	ppm ASTM D5185(m)	<0.1	<b>2</b>	---	---
Potassium	ppm ASTM D5185(m)	<0.1	<b>&lt;1</b>	---	---
Water	% ASTM D6304*	<0.05	<b>0.00</b>	---	---
ppm Water	ppm ASTM D6304*	<500	<b>0</b>	---	---

## FLUID CLEANLINESS

method	limit/base	current	history1	history2	
Particles >4µm	ASTM D7647	>2500	<b>▲ 6142</b>	---	---
Particles >6µm	ASTM D7647	>640	<b>▲ 686</b>	---	---
Particles >14µm	ASTM D7647	>80	<b>25</b>	---	---
Particles >21µm	ASTM D7647	>20	<b>5</b>	---	---
Particles >38µm	ASTM D7647	>4	<b>0</b>	---	---
Particles >71µm	ASTM D7647	>3	<b>0</b>	---	---
Oil Cleanliness	ISO 4406 (c)	>18/16/13	<b>▲ 20/17/12</b>	---	---



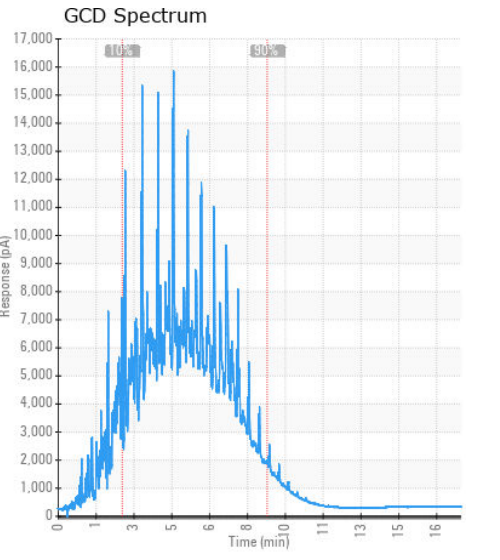
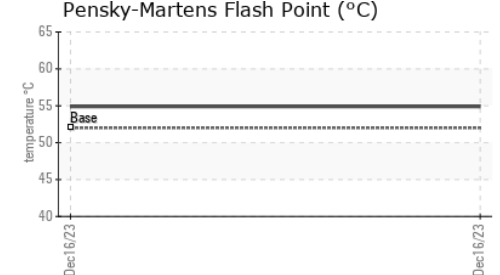
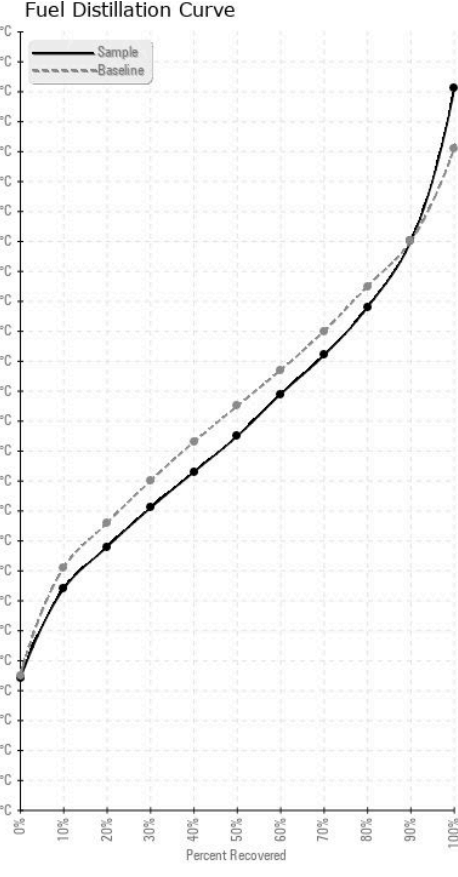
# FUEL REPORT



HEAVY METALS	method	limit/base	current	history1	history2
Aluminum	ppm	ASTM D5185(m)	<0.1	0	---
Nickel	ppm	ASTM D5185(m)	<0.1	0	---
Lead	ppm	ASTM D5185(m)	<0.1	▲ 6	---
Vanadium	ppm	ASTM D5185(m)	<0.1	0	---
Iron	ppm	ASTM D5185(m)	<0.1	1	---
Calcium	ppm	ASTM D5185(m)	<0.1	2	---
Magnesium	ppm	ASTM D5185(m)	<0.1	<1	---
Phosphorus	ppm	ASTM D5185(m)	<0.1	1	---
Zinc	ppm	ASTM D5185(m)	<0.1	2	---

SAMPLE IMAGES	method	limit/base	current	history1	history2
Color				no image	no image
Bottom				no image	no image

## GRAPHS



**Laboratory** : WearCheck - C8-1175 Appleby Line, Burlington, ON L7L 5H9  
**Sample No.** : CU0019836 **Received** : 09 Jan 2024  
**Lab Number** : 02607621 **Diagnosed** : 16 Jan 2024  
**Unique Number** : 5708707 **Diagnostician** : Kevin Marson  
**Test Package** : FUEL ( Additional Tests: CC Flash, GC-PercFuel, PrtCount )

**CUMMINS EASTERN CANADA LP**  
 315 AV LIBERTE  
 CANDIAC, QC  
 CA J5R 6Z7  
 Contact: Service Manager

To discuss this sample report, contact Customer Service at 1-800-268-2131.  
 Test denoted (\*) outside scope of accreditation, (m) method modified, (e) tested at external lab.  
 Validity of results and interpretation are based on the sample and information as supplied.

T:  
 F: (450)638-6731