



# FUEL REPORT

Sample Rating Trend

CONTAMINANT

Area  
**[410470]**  
Machine Id  
**PQ1590**

Component  
**Diesel Fuel**  
Fluid

**No.2 DIESEL FUEL (ULTRALOW SULPHUR) (--- GAL)**



## DIAGNOSIS

### Recommendation

Resample at the next service interval to monitor.

### Corrosion

{not applicable}

### Contaminants

The system cleanliness is acceptable for your target ISO 4406 cleanliness code. The water content is negligible. The system and fluid cleanliness is acceptable.

### Fuel Condition

The fuel is no longer serviceable due to the presence of contaminants.

## SAMPLE INFORMATION

method	limit/base	current	history1	history2
Sample Number	Client Info	<b>CU0021613</b>	---	---
Sample Date	Client Info	<b>08 Jan 2024</b>	---	---
Machine Age	hrs Client Info	<b>12</b>	---	---
Sample Status		<b>ABNORMAL</b>	---	---

## PHYSICAL PROPERTIES

method	limit/base	current	history1	history2	
Specific Gravity	ASTM D1298*	0.839	<b>0.833</b>	---	---
Fuel Color	text Visual Screen*	Yllow	<b>Orang</b>	---	---
Visc @ 40°C	cSt ASTM D7279(m)	3.0	<b>2.2</b>	---	---
Pensky-Martens Flash Point	°C ASTM D7215*	52	<b>48.4</b>	---	---

## SULFUR CONTENT

method	limit/base	current	history1	history2	
Sulfur	ppm ASTM D5185(m)	10	<b>13</b>	---	---

## DISTILLATION

method	limit/base	current	history1	history2	
Initial Boiling Point	°C ASTM D2887*	165	<b>155</b>	---	---
5% Distillation Point	°C ASTM D2887*		<b>176</b>	---	---
10% Distill Point	°C ASTM D2887*	201	<b>185</b>	---	---
15% Distillation Point	°C ASTM D2887*		<b>194</b>	---	---
20% Distill Point	°C ASTM D2887*	216	<b>202</b>	---	---
30% Distill Point	°C ASTM D2887*	230	<b>218</b>	---	---
40% Distill Point	°C ASTM D2887*	243	<b>233</b>	---	---
50% Distill Point	°C ASTM D2887*	255	<b>248</b>	---	---
60% Distill Point	°C ASTM D2887*	267	<b>264</b>	---	---
70% Distill Point	°C ASTM D2887*	280	<b>280</b>	---	---
80% Distill Point	°C ASTM D2887*	295	<b>298</b>	---	---
85% Distillation Point	°C ASTM D2887*		<b>310</b>	---	---
90% Distill Point	°C ASTM D2887*	310	<b>322</b>	---	---
95% Distillation Point	°C ASTM D2887*		<b>342</b>	---	---
Final Boiling Point	°C ASTM D2887*	341	<b>377</b>	---	---

## IGNITION QUALITY

method	limit/base	current	history1	history2	
API Gravity	ASTM D1298*	37.7	<b>38</b>	---	---
Cetane Index	ASTM D4737*	<40.0	<b>47</b>	---	---

## CONTAMINANTS

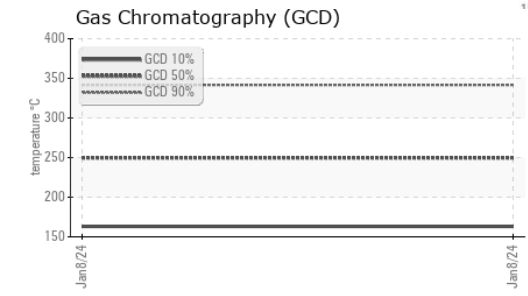
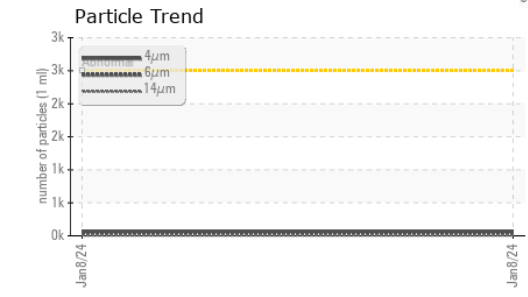
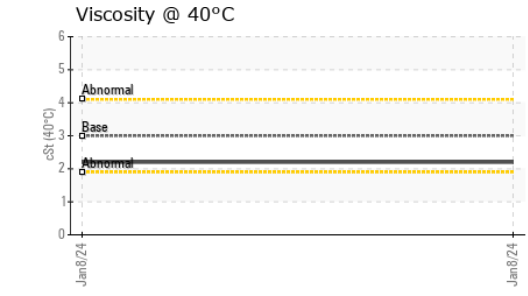
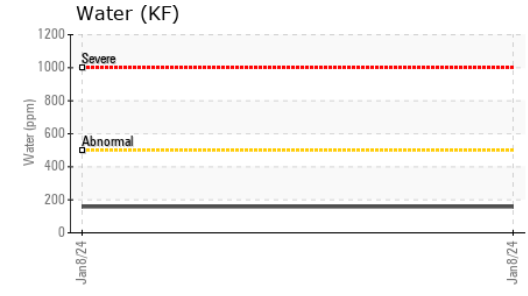
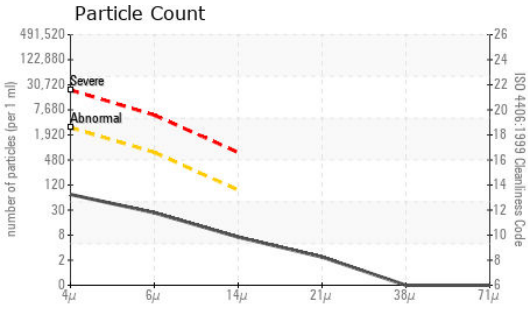
method	limit/base	current	history1	history2	
Silicon	ppm ASTM D5185(m)	<1.0	<b>0</b>	---	---
Sodium	ppm ASTM D5185(m)	<0.1	<b>&lt;1</b>	---	---
Potassium	ppm ASTM D5185(m)	<0.1	<b>0</b>	---	---
Water	% ASTM D6304*	<0.05	<b>0.015</b>	---	---
ppm Water	ppm ASTM D6304*	<500	<b>158</b>	---	---

## FLUID CLEANLINESS

method	limit/base	current	history1	history2	
Particles >4µm	ASTM D7647	>2500	<b>63</b>	---	---
Particles >6µm	ASTM D7647	>640	<b>23</b>	---	---
Particles >14µm	ASTM D7647	>80	<b>6</b>	---	---
Particles >21µm	ASTM D7647	>20	<b>2</b>	---	---
Particles >38µm	ASTM D7647	>4	<b>0</b>	---	---
Particles >71µm	ASTM D7647	>3	<b>0</b>	---	---
Oil Cleanliness	ISO 4406 (c)	>18/16/13	<b>13/12/10</b>	---	---



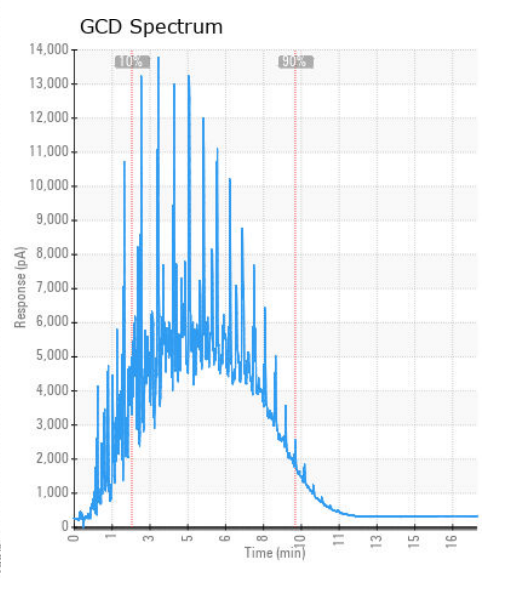
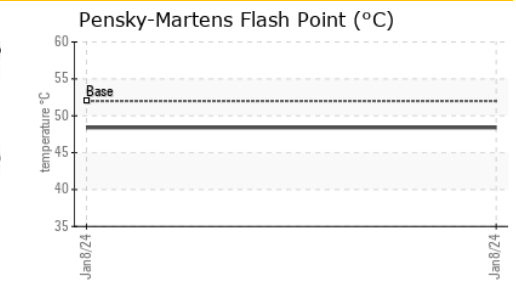
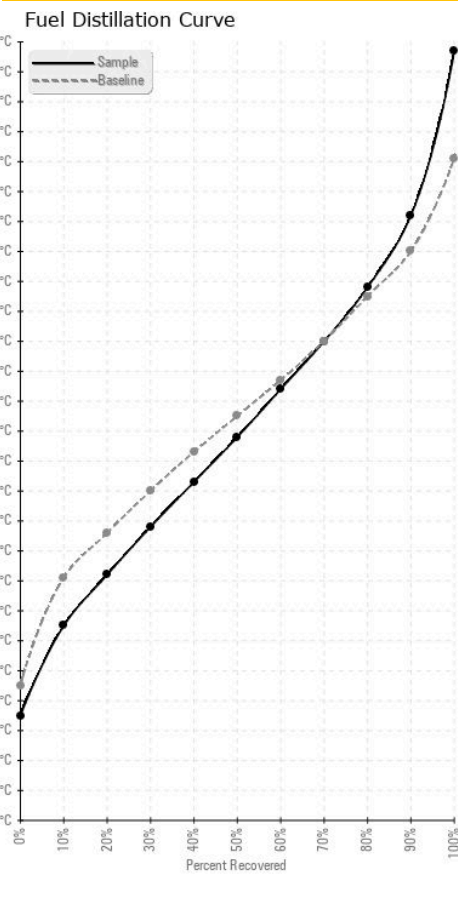
# FUEL REPORT



HEAVY METALS		method	limit/base	current	history1	history2
Aluminum	ppm	ASTM D5185(m)	<0.1	0	---	---
Nickel	ppm	ASTM D5185(m)	<0.1	0	---	---
Lead	ppm	ASTM D5185(m)	<0.1	0	---	---
Vanadium	ppm	ASTM D5185(m)	<0.1	0	---	---
Iron	ppm	ASTM D5185(m)	<0.1	0	---	---
Calcium	ppm	ASTM D5185(m)	<0.1	0	---	---
Magnesium	ppm	ASTM D5185(m)	<0.1	0	---	---
Phosphorus	ppm	ASTM D5185(m)	<0.1	<1	---	---
Zinc	ppm	ASTM D5185(m)	<0.1	<1	---	---

SAMPLE IMAGES		method	limit/base	current	history1	history2
Color					no image	no image
Bottom					no image	no image

## GRAPHS



**Laboratory** : WearCheck - C8-1175 Appleby Line, Burlington, ON L7L 5H9  
**Sample No.** : CU0021613      **Received** : 09 Jan 2024  
**Lab Number** : 02607628      **Diagnosed** : 16 Jan 2024  
**Unique Number** : 5708714      **Diagnostician** : Kevin Marson  
**Test Package** : FUEL ( Additional Tests: CC Flash, GC-PercFuel, PrtCount )

To discuss this sample report, contact Customer Service at 1-800-268-2131.  
 Test denoted (\*) outside scope of accreditation, (m) method modified, (e) tested at external lab.  
 Validity of results and interpretation are based on the sample and information as supplied.

**CUMMINS DIESEL**  
 2400 AV WATT  
 Quebec City, QC  
 CA G1P 3T3  
 Contact: Jean Verret  
 verret.jean@cummins.com  
 T: (418)651-2911  
 F: (418)651-3157