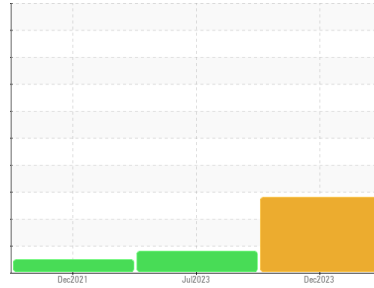


OIL ANALYSIS REPORT

Sample Rating Trend



WEAR PARTICLES



Machine Id
IMM A2 DRIVE SCREW

Component
Gearbox
Fluid
CHEVRON CLARITY HYDRAULIC AW 46 (--- GAL)

DIAGNOSIS

Recommendation

The oil change at the time of sampling has been noted. We recommend an early resample to monitor this condition. No other corrective action is recommended at this time. NOTE: Please provide information regarding reservoir capacity, filter type and micron rating with next sample.

Wear

Large Particles and small particles and total particles levels are severe. Severity Index levels are abnormal. Wear particle analysis indicates that the ferrous rolling particles are marginal.

Contaminants

There is no indication of any contamination in the oil.

Oil Condition

The AN level is acceptable for this fluid. The oil is no longer serviceable as a result of the abnormal and/or severe wear.

SAMPLE INFORMATION

method	limit/base	current	history1	history2
Sample Number	Client Info	CB0031713	CB0031434	CB0030601
Sample Date	Client Info	27 Dec 2023	20 Jul 2023	28 Dec 2021
Machine Age	hrs	Client Info	0	0
Oil Age	hrs	Client Info	0	0
Oil Changed	Client Info	Changed	Changed	Changed
Sample Status		MARGINAL	ABNORMAL	NORMAL

CONTAMINATION

method	limit/base	current	history1	history2
Water	WC Method	>0.2	NEG	NEG

WEAR METALS

method	limit/base	current	history1	history2
PQ	ASTM D8184*	45	30	4
Iron	ppm	ASTM D5185(m) >200	104	91
Chromium	ppm	ASTM D5185(m) >15	1	1
Nickel	ppm	ASTM D5185(m) >15	<1	0
Titanium	ppm	ASTM D5185(m)	0	0
Silver	ppm	ASTM D5185(m)	0	0
Aluminum	ppm	ASTM D5185(m) >25	<1	0
Lead	ppm	ASTM D5185(m) >100	<1	0
Copper	ppm	ASTM D5185(m) >200	1	<1
Tin	ppm	ASTM D5185(m) >25	0	0
Antimony	ppm	ASTM D5185(m) >5	0	0
Vanadium	ppm	ASTM D5185(m)	0	0
Beryllium	ppm	ASTM D5185(m)	0	0
Cadmium	ppm	ASTM D5185(m)	0	0

ADDITIVES

method	limit/base	current	history1	history2
Boron	ppm	ASTM D5185(m)	<1	<1
Barium	ppm	ASTM D5185(m)	0	0
Molybdenum	ppm	ASTM D5185(m)	0	<1
Manganese	ppm	ASTM D5185(m)	<1	<1
Magnesium	ppm	ASTM D5185(m)	<1	<1
Calcium	ppm	ASTM D5185(m)	6	21
Phosphorus	ppm	ASTM D5185(m)	300	279
Zinc	ppm	ASTM D5185(m)	9	7
Sulfur	ppm	ASTM D5185(m)	397	406
Lithium	ppm	ASTM D5185(m)	<1	<1

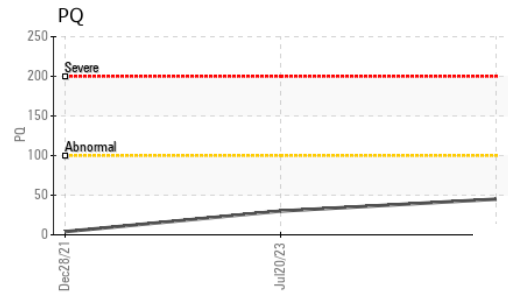
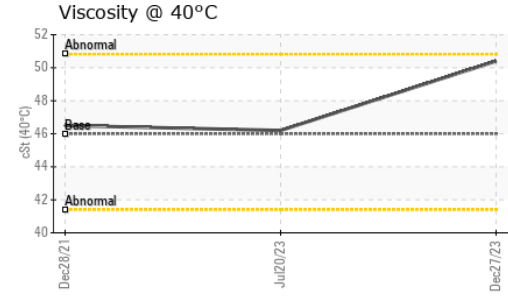
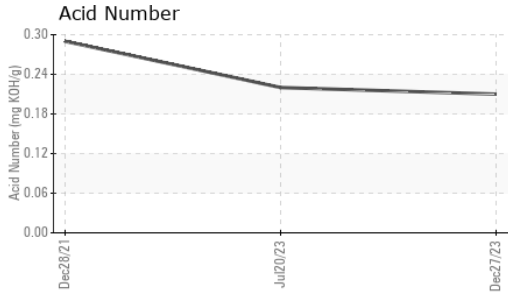
CONTAMINANTS

method	limit/base	current	history1	history2
Silicon	ppm	ASTM D5185(m) >50	7	6
Sodium	ppm	ASTM D5185(m)	0	0
Potassium	ppm	ASTM D5185(m) >20	1	<1

FLUID DEGRADATION

method	limit/base	current	history1	history2
Acid Number (AN)	mg KOH/g	ASTM D974*	0.21	0.22

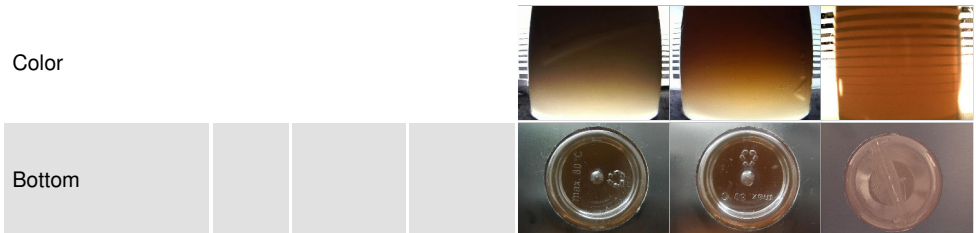
OIL ANALYSIS REPORT



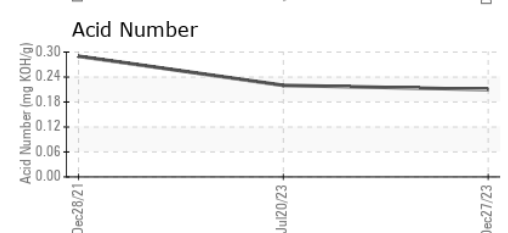
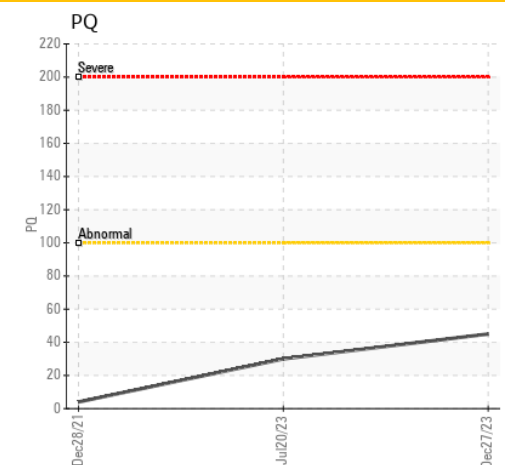
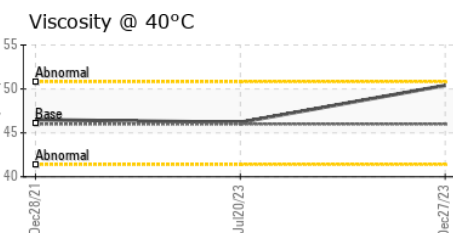
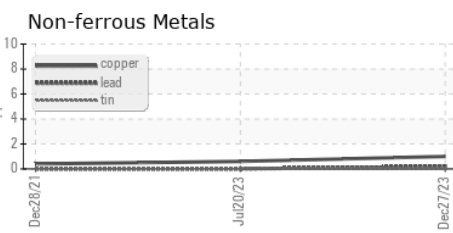
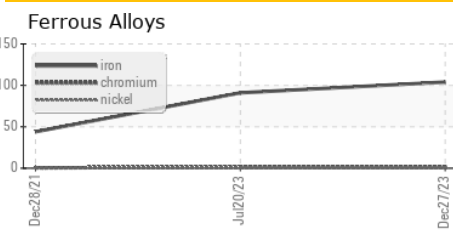
PARAMETER	method	limit/base	current	history1	history2
White Metal	scalar	Visual*	NONE	NONE	NONE
Yellow Metal	scalar	Visual*	NONE	NONE	NONE
Precipitate	scalar	Visual*	NONE	NONE	NONE
Silt	scalar	Visual*	NONE	NONE	NONE
Debris	scalar	Visual*	NONE	NONE	NONE
Sand/Dirt	scalar	Visual*	NONE	NONE	NONE
Appearance	scalar	Visual*	NORML	NORML	NORML
Odor	scalar	Visual*	NORML	NORML	NORML
Emulsified Water	scalar	Visual*	>0.2	NEG	NEG
Free Water	scalar	Visual*		NEG	NEG

FLUID PROPERTIES	method	limit/base	current	history1	history2
Visc @ 40°C	cSt	ASTM D7279(m)	46.0	50.4	46.2, 46.5

SAMPLE IMAGES	method	limit/base	current	history1	history2
---------------	--------	------------	---------	----------	----------



GRAPHS



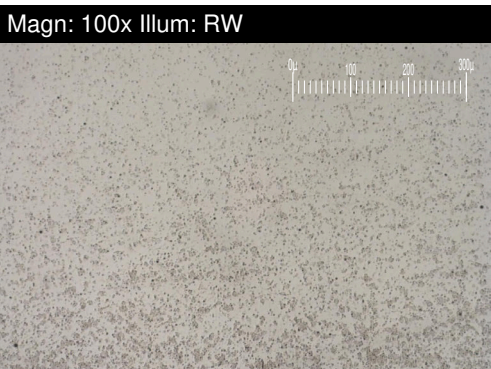
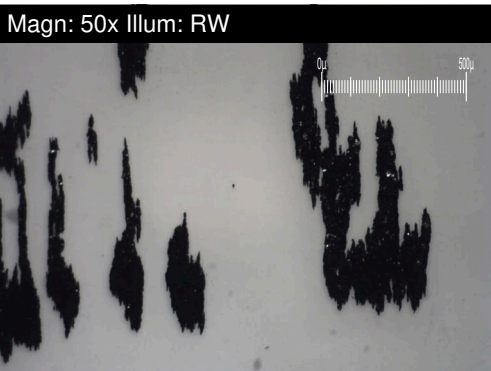
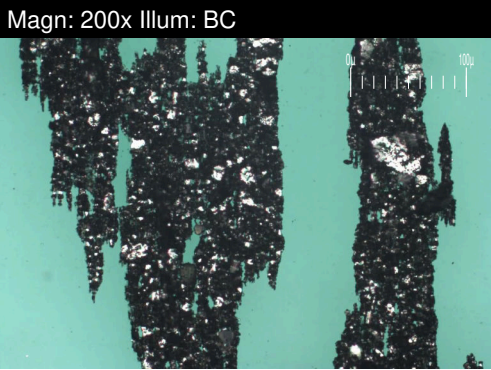
Laboratory : WearCheck - C8-1175 Appleby Line, Burlington, ON L7L 5H9
Sample No. : CB0031713 **Received** : 10 Jan 2024
Lab Number : 02607993 **Diagnosed** : 17 Jan 2024
Unique Number : 5709079 **Diagnostician** : Kevin Marson
Test Package : IND 3

TOYOTA MOTOR MANUFACT.
 1055 FOUNTAIN STREET N.
 CAMBRIDGE, ON
 CA N3H 5K2
 Contact: mike clappison
 mike.clappison@toyota.com
 T: (519)212-5023
 F: (519)653-9638

To discuss this sample report, contact Customer Service at 1-800-268-2131.
 Test denoted (*) outside scope of accreditation, (m) method modified, (e) tested at external lab.
 Validity of results and interpretation are based on the sample and information as supplied.

FERROGRAPHY REPORT

Machine Id
IMM A2 DRIVE SCREW
Component
Gearbox
Fluid
CHEVRON CLARITY HYDRAULIC AW 46 (--- GAL)

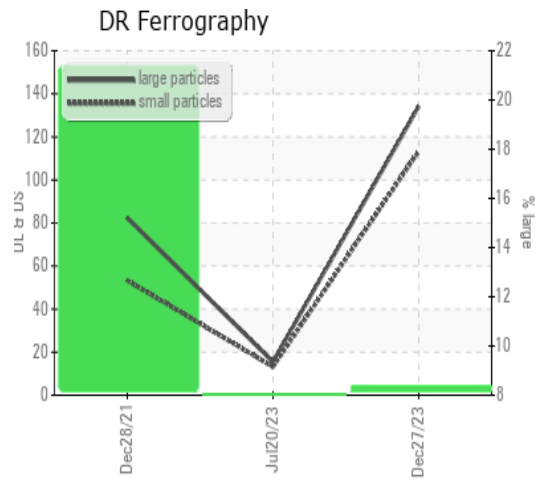


DR-FERROGRAPHY		method	limit/base	current	history1	history2
Large Particles		DR-Ferr*		134.2	15.5	82.4
Small Particles		DR-Ferr*		113.4	13.2	53.3
Total Particles		DR-Ferr*	>---	247.6	28.7	135.7
Large Particles Percentage	%	DR-Ferr*		8.4	8	21.4
Severity Index		DR-Ferr*		2791	36	2398

FERROGRAPHY		method	limit/base	current	history1	history2
Ferrous Rubbing	Scale 0-10	ASTM D7684*		5	6	4
Ferrous Sliding	Scale 0-10	ASTM D7684*				
Ferrous Cutting	Scale 0-10	ASTM D7684*				
Ferrous Rolling	Scale 0-10	ASTM D7684*		1	3	2
Ferrous Break-in	Scale 0-10	ASTM D7684*				
Ferrous Spheres	Scale 0-10	ASTM D7684*				
Ferrous Black Oxides	Scale 0-10	ASTM D7684*				
Ferrous Red Oxides	Scale 0-10	ASTM D7684*				
Ferrous Corrosive	Scale 0-10	ASTM D7684*		2	4	1
Ferrous Other	Scale 0-10	ASTM D7684*				
Nonferrous Rubbing	Scale 0-10	ASTM D7684*				
Nonferrous Sliding	Scale 0-10	ASTM D7684*				
Nonferrous Cutting	Scale 0-10	ASTM D7684*				
Nonferrous Rolling	Scale 0-10	ASTM D7684*				
Nonferrous Other	Scale 0-10	ASTM D7684*				
Carbonaceous Material	Scale 0-10	ASTM D7684*				
Lubricant Degradation	Scale 0-10	ASTM D7684*		3	2	
Sand/Dirt	Scale 0-10	ASTM D7684*		1	1	1
Fibres	Scale 0-10	ASTM D7684*				
Spheres	Scale 0-10	ASTM D7684*				
Other	Scale 0-10	ASTM D7684*		1	2	1

WEAR

Large Particles and small particles and total particles levels are severe. Severity Index levels are abnormal. Wear particle analysis indicates that the ferrous rolling particles are marginal.



This page left intentionally blank