



FUEL REPORT

Sample Rating Trend

NORMAL



Area
[TANK SAMPLE]
 Machine Id
FREIGHTLINER 1667
 Component
Diesel Fuel
 Fluid
DISEL FUEL No. 2 (--- GAL)

DIAGNOSIS

Recommendation

Please contact your representative for information regarding the proper sampling kits for your service.

Corrosion

{not applicable}

Contaminants

There is no indication of any contamination in the component(unconfirmed).

Fuel Condition

Not enough sample submitted to determine fuel condition and/or classification.

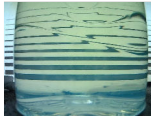

SAMPLE INFORMATION		method	limit/base	current	history1	history2
Sample Number	Client Info			WC0887224	---	---
Sample Date	Client Info			04 Jan 2024	---	---
Machine Age	hrs	Client Info		0	---	---
Sample Status				NORMAL	---	---

PHYSICAL PROPERTIES		method	limit/base	current	history1	history2
Visc @ 40°C	cSt	ASTM D7279(m)	4.1	2.2	---	---

SULFUR CONTENT		method	limit/base	current	history1	history2
Sulfur	ppm	ASTM D5185(m)		9	---	---

CONTAMINANTS		method	limit/base	current	history1	history2
Silicon	ppm	ASTM D5185(m)	<1.0	5	---	---
Sodium	ppm	ASTM D5185(m)	<0.1	<1	---	---
Potassium	ppm	ASTM D5185(m)	<0.1	0	---	---

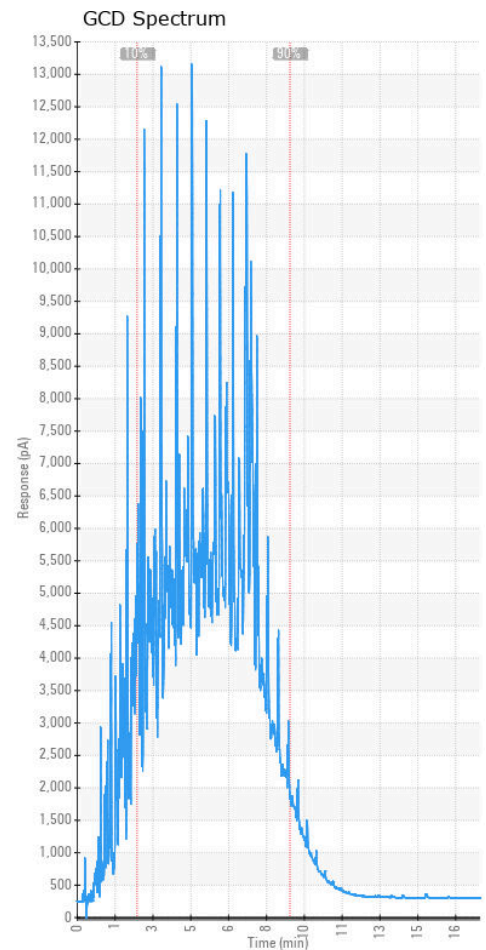
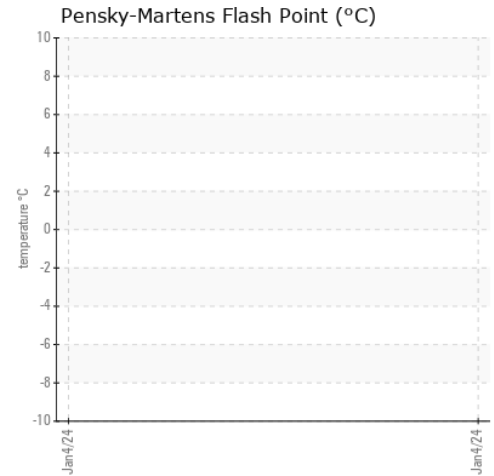
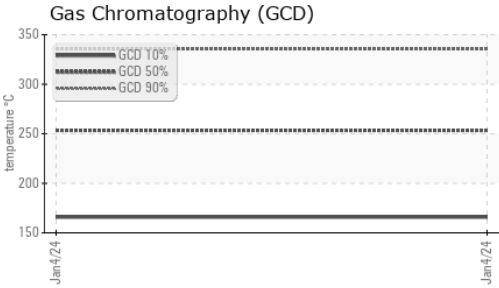
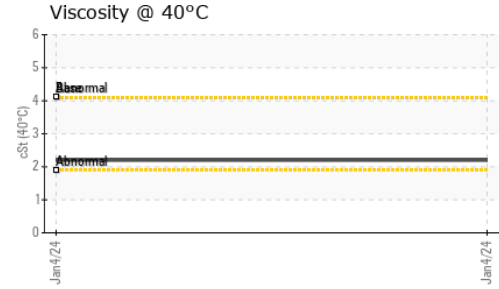
HEAVY METALS		method	limit/base	current	history1	history2
Aluminum	ppm	ASTM D5185(m)	<0.1	0	---	---
Nickel	ppm	ASTM D5185(m)	<0.1	0	---	---
Lead	ppm	ASTM D5185(m)	<0.1	0	---	---
Vanadium	ppm	ASTM D5185(m)	<0.1	0	---	---
Iron	ppm	ASTM D5185(m)	<0.1	<1	---	---
Calcium	ppm	ASTM D5185(m)	<0.1	<1	---	---
Magnesium	ppm	ASTM D5185(m)	<0.1	0	---	---
Phosphorus	ppm	ASTM D5185(m)	<0.1	0	---	---
Zinc	ppm	ASTM D5185(m)	<0.1	0	---	---

SAMPLE IMAGES		method	limit/base	current	history1	history2
Color					no image	no image
Bottom					no image	no image



FUEL REPORT

GRAPHS



Laboratory : WearCheck - C8-1175 Appleby Line, Burlington, ON L7L 5H9 **CORNWALL TRUCK MAINTENANCE**
Sample No. : WC0887224 **Received** : 10 Jan 2024 P.O. BOX 1828, 1930 McCONNEL AVENUE
Lab Number : 02608011 **Diagnosed** : 15 Jan 2024 CORNWALL, ON
Unique Number : 5709097 **Diagnostician** : Kevin Marson CA K6H 6N6
Test Package : MOB 1 (Additional Tests: GC-PercFuel, GCD)

To discuss this sample report, contact Customer Service at 1-800-268-2131.
 Test denoted (*) outside scope of accreditation, (m) method modified, (e) tested at external lab.
 Validity of results and interpretation are based on the sample and information as supplied.

Contact: CTM SERVICE
 Service@CTMVOLVO.com
 T: (613)936-1585
 F: (613)936-2149