



# FUEL REPORT

Sample Rating Trend

**NORMAL**



Machine Id

## FREIGHTLINER 1667 FILTER

Component

**Diesel Fuel**

Fluid

**No.2 DIESEL FUEL (ULTRALOW SULPHUR) (--- GAL)**

### DIAGNOSIS

#### Recommendation

Please contact your representative for information regarding the proper sampling kits for your service.

#### Corrosion

{not applicable}

#### Contaminants

There is no indication of any contamination in the component(unconfirmed).

#### Fuel Condition

Not enough sample submitted to determine fuel condition and/or classification.

SAMPLE INFORMATION		method	limit/base	current	history1	history2
Sample Number	Client Info			<b>WC0887223</b>	---	---
Sample Date	Client Info			<b>04 Jan 2024</b>	---	---
Machine Age	hrs	Client Info		<b>0</b>	---	---
Sample Status				<b>NORMAL</b>	---	---

PHYSICAL PROPERTIES		method	limit/base	current	history1	history2
Visc @ 40°C	cSt	ASTM D7279(m)	3.0	<b>2.2</b>	---	---

SULFUR CONTENT		method	limit/base	current	history1	history2
Sulfur	ppm	ASTM D5185(m)	10	<b>13</b>	---	---

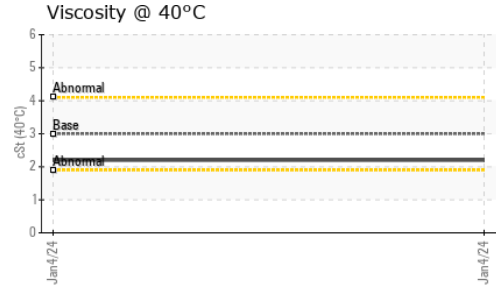
CONTAMINANTS		method	limit/base	current	history1	history2
Silicon	ppm	ASTM D5185(m)	<1.0	<b>0</b>	---	---
Sodium	ppm	ASTM D5185(m)	<0.1	<b>&lt;1</b>	---	---
Potassium	ppm	ASTM D5185(m)	<0.1	<b>0</b>	---	---

HEAVY METALS		method	limit/base	current	history1	history2
Aluminum	ppm	ASTM D5185(m)	<0.1	<b>0</b>	---	---
Nickel	ppm	ASTM D5185(m)	<0.1	<b>0</b>	---	---
Lead	ppm	ASTM D5185(m)	<0.1	<b>0</b>	---	---
Vanadium	ppm	ASTM D5185(m)	<0.1	<b>0</b>	---	---
Iron	ppm	ASTM D5185(m)	<0.1	<b>&lt;1</b>	---	---
Calcium	ppm	ASTM D5185(m)	<0.1	<b>2</b>	---	---
Magnesium	ppm	ASTM D5185(m)	<0.1	<b>0</b>	---	---
Phosphorus	ppm	ASTM D5185(m)	<0.1	<b>&lt;1</b>	---	---
Zinc	ppm	ASTM D5185(m)	<0.1	<b>1</b>	---	---

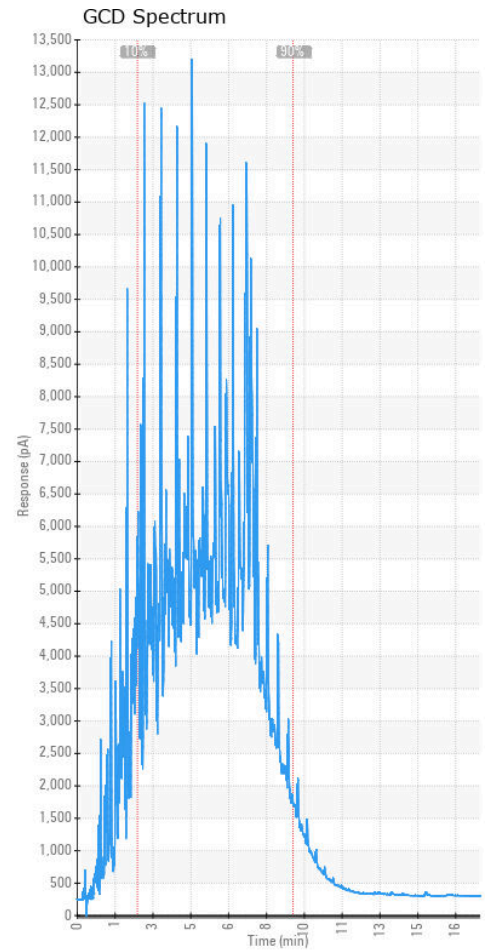
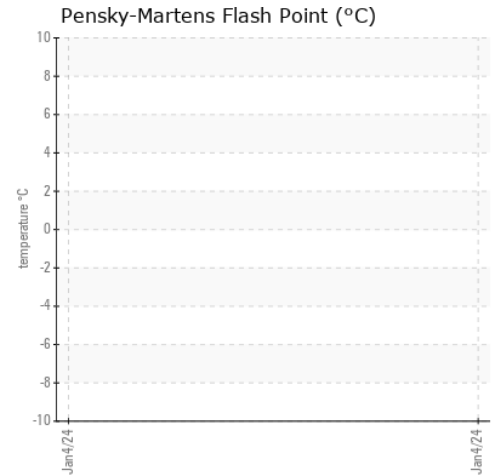
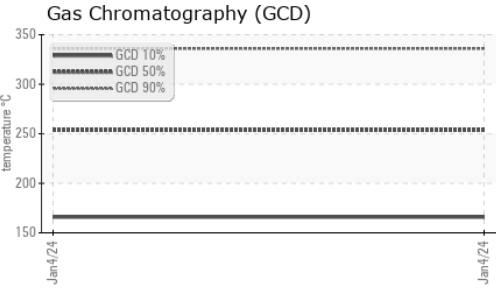
SAMPLE IMAGES		method	limit/base	current	history1	history2
Color						
Bottom						



# FUEL REPORT



## GRAPHS



**Laboratory** : WearCheck - C8-1175 Appleby Line, Burlington, ON L7L 5H9 **CORNWALL TRUCK MAINTENANCE**  
**Sample No.** : WC0887223 **Received** : 10 Jan 2024 P.O. BOX 1828, 1930 McCONNEL AVENUE  
**Lab Number** : 02608012 **Diagnosed** : 15 Jan 2024 CORNWALL, ON  
**Unique Number** : 5709098 **Diagnostician** : Kevin Marson CA K6H 6N6  
**Test Package** : MOB 1 ( Additional Tests: GC-PercFuel, GCD )

To discuss this sample report, contact Customer Service at 1-800-268-2131.  
 Test denoted (\*) outside scope of accreditation, (m) method modified, (e) tested at external lab.  
 Validity of results and interpretation are based on the sample and information as supplied.

Contact: CTM SERVICE  
 Service@CTMVOLVO.com  
 T: (613)936-1585  
 F: (613)936-2149