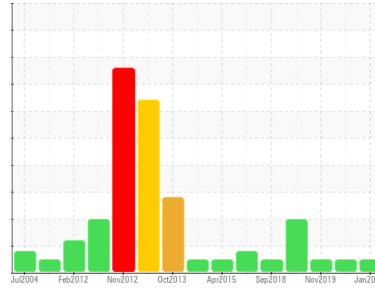




# OIL ANALYSIS REPORT

Sample Rating Trend



**NORMAL**



Area  
**BOF/ALLOY SYSTEM**  
 Machine Id  
**TRIPPER CAR T2 (4th floor)**

Component  
**Gearbox**  
 Fluid  
**GEAR OIL ISO 220 (--- GAL)**

## DIAGNOSIS

### Recommendation

Little or no information is provided as to the component and lubricant being tested. Recommendations are therefore generic in nature and may not apply to the current application. Please forward information as to equipment type, reservoir capacity, lubricant type and any pertinent information to allow for a more accurate assessment. Resample at the next service interval to monitor. NOTE: Please provide information regarding reservoir capacity, filter type and micron rating with next sample. Please specify the brand, type, and viscosity of the oil on your next sample.

### Wear

All component wear rates are normal.

### Contamination

There is no indication of any contamination in the oil.

### Fluid Condition

The AN level is acceptable for this fluid. The condition of the oil is suitable for further service.

SAMPLE INFORMATION		method	limit/base	current	history1	history2
Sample Number	Client Info			<b>WC0898701</b>	WC0838943	WC0415688
Sample Date	Client Info			<b>10 Jan 2024</b>	13 Jul 2023	25 Nov 2019
Machine Age	hrs	Client Info		<b>0</b>	0	0
Oil Age	hrs	Client Info		<b>0</b>	0	0
Oil Changed	Client Info			<b>N/A</b>	N/A	N/A
Sample Status				<b>NORMAL</b>	NORMAL	NORMAL

CONTAMINATION		method	limit/base	current	history1	history2
Water	WC Method		>0.2	<b>NEG</b>	NEG	NEG

WEAR METALS		method	limit/base	current	history1	history2
PQ		ASTM D8184*	>DFLT	<b>71</b>	14	17
Iron	ppm	ASTM D5185(m)	>200	<b>61</b>	19	12
Chromium	ppm	ASTM D5185(m)	>15	<b>2</b>	2	1
Nickel	ppm	ASTM D5185(m)	>15	<b>&lt;1</b>	<1	<1
Titanium	ppm	ASTM D5185(m)		<b>0</b>	0	<1
Silver	ppm	ASTM D5185(m)		<b>0</b>	0	0
Aluminum	ppm	ASTM D5185(m)	>25	<b>2</b>	1	<1
Lead	ppm	ASTM D5185(m)	>100	<b>32</b>	30	28
Copper	ppm	ASTM D5185(m)	>200	<b>16</b>	20	19
Tin	ppm	ASTM D5185(m)	>25	<b>&lt;1</b>	<1	<1
Antimony	ppm	ASTM D5185(m)	>5	<b>0</b>	0	<1
Vanadium	ppm	ASTM D5185(m)		<b>0</b>	0	0
Beryllium	ppm	ASTM D5185(m)		<b>0</b>	0	0
Cadmium	ppm	ASTM D5185(m)		<b>0</b>	0	0

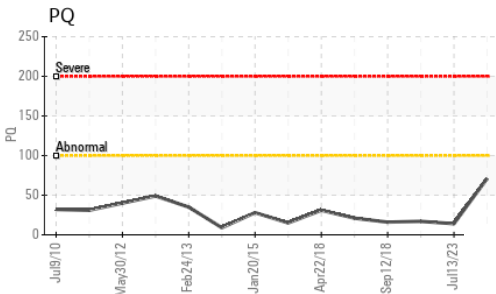
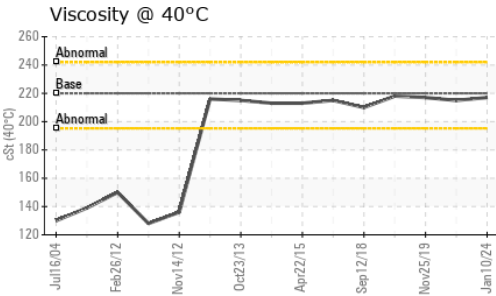
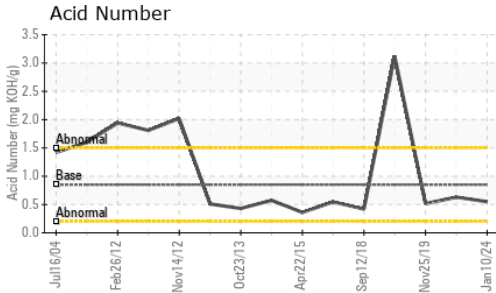
ADDITIVES		method	limit/base	current	history1	history2
Boron	ppm	ASTM D5185(m)	50	<b>&lt;1</b>	<1	<1
Barium	ppm	ASTM D5185(m)	15	<b>0</b>	0	<1
Molybdenum	ppm	ASTM D5185(m)	15	<b>0</b>	0	0
Manganese	ppm	ASTM D5185(m)		<b>3</b>	<1	<1
Magnesium	ppm	ASTM D5185(m)	50	<b>12</b>	6	2
Calcium	ppm	ASTM D5185(m)	50	<b>27</b>	14	9
Phosphorus	ppm	ASTM D5185(m)	350	<b>314</b>	341	312
Zinc	ppm	ASTM D5185(m)	100	<b>25</b>	29	20
Sulfur	ppm	ASTM D5185(m)	12500	<b>9795</b>	9650	9870
Lithium	ppm	ASTM D5185(m)		<b>&lt;1</b>	<1	<1

CONTAMINANTS		method	limit/base	current	history1	history2
Silicon	ppm	ASTM D5185(m)	>50	<b>4</b>	3	2
Sodium	ppm	ASTM D5185(m)		<b>2</b>	2	<1
Potassium	ppm	ASTM D5185(m)	>20	<b>1</b>	1	<1

FLUID DEGRADATION		method	limit/base	current	history1	history2
Acid Number (AN)	mg KOH/g	ASTM D974*	0.85	<b>0.55</b>	0.63	0.515



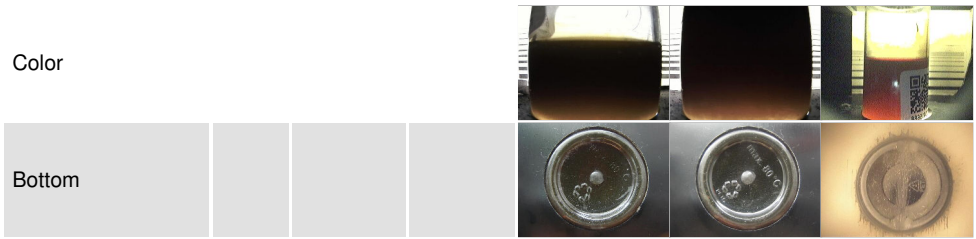
# OIL ANALYSIS REPORT



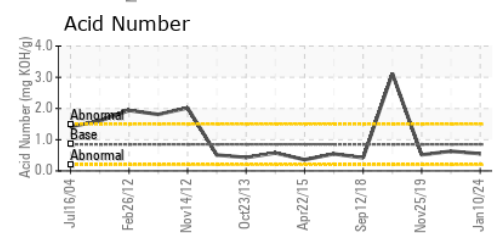
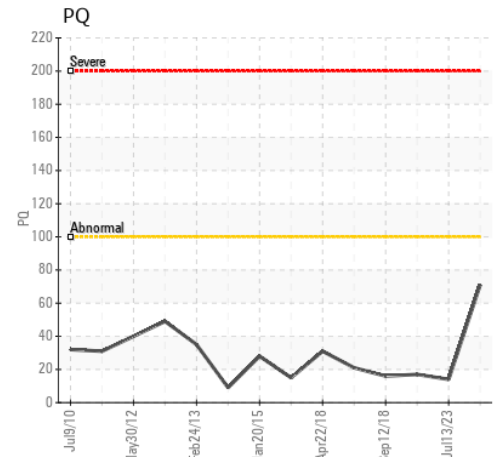
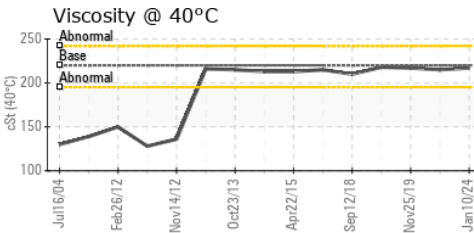
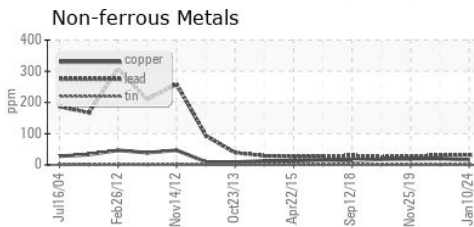
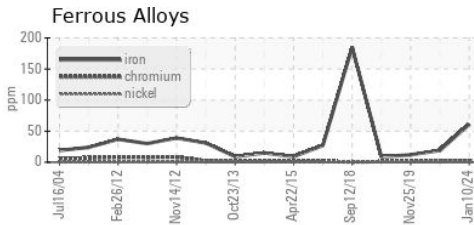
VISUAL	method	limit/base	current	history1	history2
White Metal	scalar	Visual*	NONE	NONE	VLITE
Yellow Metal	scalar	Visual*	NONE	NONE	NONE
Precipitate	scalar	Visual*	NONE	NONE	NONE
Silt	scalar	Visual*	NONE	NONE	NONE
Debris	scalar	Visual*	NONE	LIGHT	VLITE
Sand/Dirt	scalar	Visual*	NONE	NONE	NONE
Appearance	scalar	Visual*	NORML	NORML	NORML
Odor	scalar	Visual*	NORML	NORML	NORML
Emulsified Water	scalar	Visual*	>0.2	NEG	NEG
Free Water	scalar	Visual*		NEG	NEG

FLUID PROPERTIES	method	limit/base	current	history1	history2
Visc @ 40°C	cSt	ASTM D7279(m)	220	217	215

SAMPLE IMAGES	method	limit/base	current	history1	history2
---------------	--------	------------	---------	----------	----------



## GRAPHS



ISO 17025:2017  
Accredited  
Laboratory

**Laboratory** : WearCheck - C8-1175 Appleby Line, Burlington, ON L7L 5H9 **STELCO - BOSC - Basic Oxygen Slab Caster**  
**Sample No.** : WC0898701 **Received** : 10 Jan 2024 2330 Regional Road #3, Door: BOSC8  
**Lab Number** : 02608029 **Diagnosed** : 12 Jan 2024 NANTICOKE, ON  
**Unique Number** : 5709115 **Diagnostician** : Wes Davis CA N0A 1L0  
**Test Package** : IND 2

To discuss this sample report, contact Customer Service at 1-800-268-2131.

Test denoted (\*) outside scope of accreditation, (m) method modified, (e) tested at external lab.

Validity of results and interpretation are based on the sample and information as supplied.

Contact: Tom Walden  
Thomas.Walden@stelco.com  
T: (519)587-4541  
F: (519)587-7702