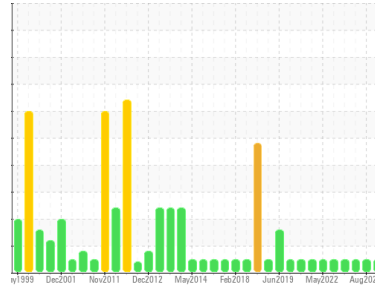




OIL ANALYSIS REPORT

Sample Rating Trend



NORMAL



Area
PUMPHOUSE/VACUUM PRIMING
 Machine Id
C - Vacuum Priming Turbine OB

Component
Lube System
 Fluid
PETRO CANADA HYDREX AW 100 (4 LTR)

DIAGNOSIS

Recommendation

Resample at the next service interval to monitor.

Wear

All component wear rates are normal.

Contamination

The system cleanliness is acceptable for your target ISO 4406 cleanliness code. The system and fluid cleanliness is acceptable.

Fluid Condition

The AN level is acceptable for this fluid. The condition of the oil is suitable for further service.

SAMPLE INFORMATION

	method	limit/base	current	history1	history2
Sample Number	Client Info		WC0898650	WC0850135	WC0824462
Sample Date	Client Info		10 Jan 2024	16 Aug 2023	31 May 2023
Machine Age	hrs	Client Info	0	0	0
Oil Age	hrs	Client Info	0	0	0
Oil Changed	Client Info		N/A	N/A	N/A
Sample Status			NORMAL	NORMAL	NORMAL

CONTAMINATION

	method	limit/base	current	history1	history2
Water	WC Method	>5	NEG	NEG	NEG

WEAR METALS

	method	limit/base	current	history1	history2
PQ	ASTM D8184*	>DFLT	0	0	0
Iron	ppm	ASTM D5185(m) >20	1	<1	2
Chromium	ppm	ASTM D5185(m) >20	0	0	0
Nickel	ppm	ASTM D5185(m) >20	0	<1	0
Titanium	ppm	ASTM D5185(m)	0	0	0
Silver	ppm	ASTM D5185(m)	0	1	0
Aluminum	ppm	ASTM D5185(m) >20	<1	<1	0
Lead	ppm	ASTM D5185(m) >20	<1	<1	<1
Copper	ppm	ASTM D5185(m) >20	<1	<1	2
Tin	ppm	ASTM D5185(m) >20	<1	<1	<1
Antimony	ppm	ASTM D5185(m)	0	0	0
Vanadium	ppm	ASTM D5185(m)	0	0	0
Beryllium	ppm	ASTM D5185(m)	0	0	0
Cadmium	ppm	ASTM D5185(m)	0	0	0

ADDITIVES

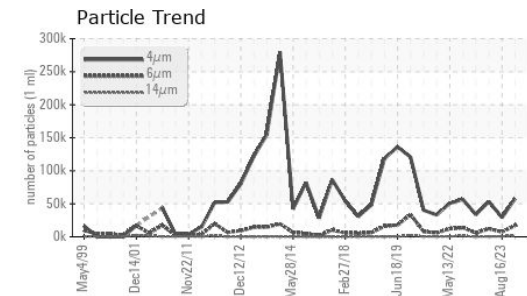
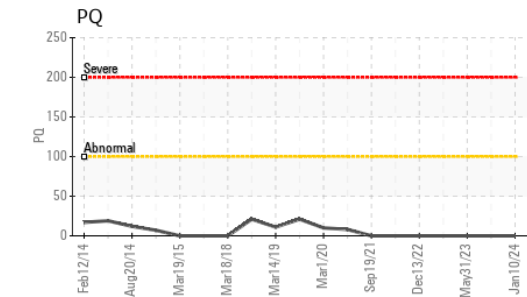
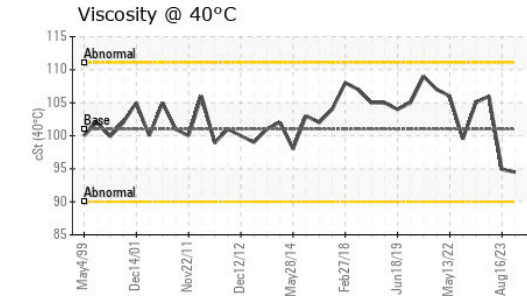
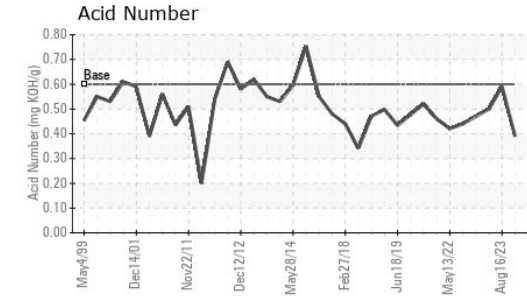
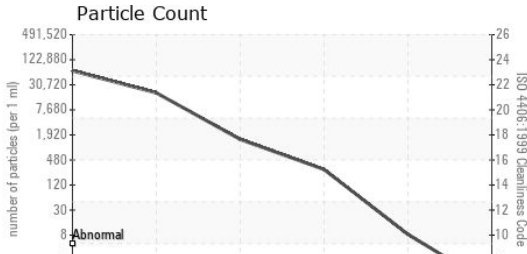
	method	limit/base	current	history1	history2
Boron	ppm	ASTM D5185(m) 0	<1	<1	<1
Barium	ppm	ASTM D5185(m) 0	0	<1	5
Molybdenum	ppm	ASTM D5185(m) 0	0	0	0
Manganese	ppm	ASTM D5185(m) 0	0	0	0
Magnesium	ppm	ASTM D5185(m) 0	<1	<1	0
Calcium	ppm	ASTM D5185(m) 50	53	49	54
Phosphorus	ppm	ASTM D5185(m) 330	317	348	358
Zinc	ppm	ASTM D5185(m) 430	411	424	383
Sulfur	ppm	ASTM D5185(m) 760	2561	2459	2592
Lithium	ppm	ASTM D5185(m)	<1	<1	<1

CONTAMINANTS

	method	limit/base	current	history1	history2
Silicon	ppm	ASTM D5185(m) >15	3	2	2
Sodium	ppm	ASTM D5185(m)	0	0	<1
Potassium	ppm	ASTM D5185(m) >20	<1	<1	0



OIL ANALYSIS REPORT



FLUID CLEANLINESS	method	limit/base	current	history1	history2
Particles >4µm	ASTM D7647		57731	29096	53283
Particles >6µm	ASTM D7647	>10240000	17065	7323	12330
Particles >14µm	ASTM D7647	>10240000	1315	744	438
Particles >21µm	ASTM D7647	>25600000	250	219	79
Particles >38µm	ASTM D7647	>6400000	7	3	0
Particles >71µm	ASTM D7647	>1600000	0	0	0
Oil Cleanliness	ISO 4406 (c)	>--/30/30	23/21/18	22/20/17	23/21/16

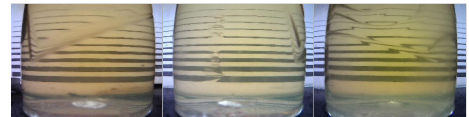
FLUID DEGRADATION	method	limit/base	current	history1	history2	
Acid Number (AN)	mg KOH/g	ASTM D974*	0.60	0.39	0.59	0.50

VISUAL	method	limit/base	current	history1	history2	
White Metal	scalar	Visual*	NONE	NONE	NONE	NONE
Yellow Metal	scalar	Visual*	NONE	NONE	NONE	NONE
Precipitate	scalar	Visual*	NONE	NONE	NONE	NONE
Silt	scalar	Visual*	NONE	NONE	VLITE	NONE
Debris	scalar	Visual*	NONE	VLITE	VLITE	NONE
Sand/Dirt	scalar	Visual*	NONE	NONE	NONE	LIGHT
Appearance	scalar	Visual*	NORML	NORML	NORML	NORML
Odor	scalar	Visual*	NORML	NORML	NORML	NORML
Emulsified Water	scalar	Visual*	>5	NEG	NEG	NEG
Free Water	scalar	Visual*		NEG	NEG	NEG

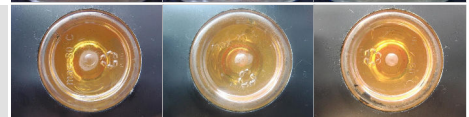
FLUID PROPERTIES	method	limit/base	current	history1	history2	
Visc @ 40°C	cSt	ASTM D7279(m)	101	94.5	94.9	106

SAMPLE IMAGES	method	limit/base	current	history1	history2
---------------	--------	------------	---------	----------	----------

Color



Bottom



Laboratory : WearCheck - C8-1175 Appleby Line, Burlington, ON L7L 5H9 **STELCO - BOSC - Basic Oxygen Slab Caster**
Sample No. : WC0898650 **Received** : 10 Jan 2024 2330 Regional Road #3, Door: BOSC8
Lab Number : **02608039** **Diagnosed** : 12 Jan 2024 NANTICOKE, ON
Unique Number : 5709125 **Diagnostician** : Wes Davis CA N0A 1L0
Test Package : IND 2 (Additional Tests: PQ)

To discuss this sample report, contact Customer Service at 1-800-268-2131.
 Test denoted (*) outside scope of accreditation, (m) method modified, (e) tested at external lab.
 Validity of results and interpretation are based on the sample and information as supplied.

Contact: Tom Walden
 Thomas.Walden@stelco.com
 T: (519)587-4541
 F: (519)587-7702