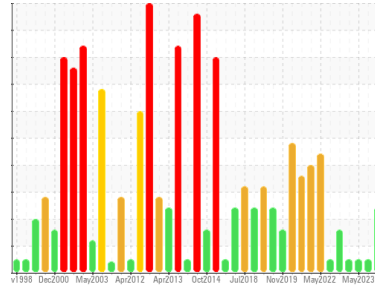




OIL ANALYSIS REPORT

Sample Rating Trend



WATER



Area
PUMPHOUSE/BACKWASH PUMPS
Machine Id
C - Backwash Pump 2 - OB

Component
Gear Lube System

Fluid
PETRO CANADA HYDREX AW 100 (1 GAL)

DIAGNOSIS

Recommendation

We advise that you check for the source of water entry. Check seals and/or filters for points of contaminant entry. The air breather requires service. If unrated, we recommend that you replace with a suitable micron rated and/or desiccant air breather. If rated, we recommend that you service/replace the breather. We advise that you follow the water drain-off procedure for this component. We recommend an early resample to monitor this condition.

Wear

All component wear rates are normal.

Contamination

Excessive free water present.

Fluid Condition

The oil viscosity is lower than typical, possibly indicating the addition of lighter grade oil. The AN level is acceptable for this fluid. The oil is still serviceable provided that the contaminant(s) can be reduced to acceptable levels.

SAMPLE INFORMATION

method	limit/base	current	history1	history2
Sample Number	Client Info	WC0898672	WC0850114	WC0824392
Sample Date	Client Info	10 Jan 2024	16 Aug 2023	31 May 2023
Machine Age	hrs	0	0	0
Oil Age	hrs	0	0	0
Oil Changed	Client Info	N/A	N/A	N/A
Sample Status		ABNORMAL	NORMAL	NORMAL

CONTAMINATION

method	limit/base	current	history1	history2
Water	WC Method >1	NEG	NEG	NEG

WEAR METALS

method	limit/base	current	history1	history2
PQ	ASTM D8184* >DFLT	14	0	34
Iron	ppm ASTM D5185(m) >150	22	3	115
Chromium	ppm ASTM D5185(m) >10	<1	0	<1
Nickel	ppm ASTM D5185(m) >10	<1	<1	0
Titanium	ppm ASTM D5185(m)	0	0	0
Silver	ppm ASTM D5185(m)	0	1	0
Aluminum	ppm ASTM D5185(m) >25	<1	<1	<1
Lead	ppm ASTM D5185(m) >100	3	1	<1
Copper	ppm ASTM D5185(m) >50	24	13	3
Tin	ppm ASTM D5185(m) >10	0	0	0
Antimony	ppm ASTM D5185(m) >5	0	0	0
Vanadium	ppm ASTM D5185(m)	0	0	0
Beryllium	ppm ASTM D5185(m)	0	0	0
Cadmium	ppm ASTM D5185(m)	0	<1	<1

ADDITIVES

method	limit/base	current	history1	history2
Boron	ppm ASTM D5185(m) 0	0	<1	<1
Barium	ppm ASTM D5185(m) 0	5	7	0
Molybdenum	ppm ASTM D5185(m) 0	0	0	0
Manganese	ppm ASTM D5185(m) 0	0	0	<1
Magnesium	ppm ASTM D5185(m) 0	1	<1	<1
Calcium	ppm ASTM D5185(m) 50	37	43	48
Phosphorus	ppm ASTM D5185(m) 330	302	324	356
Zinc	ppm ASTM D5185(m) 430	355	379	396
Sulfur	ppm ASTM D5185(m) 760	2739	2595	2851
Lithium	ppm ASTM D5185(m)	<1	<1	<1

CONTAMINANTS

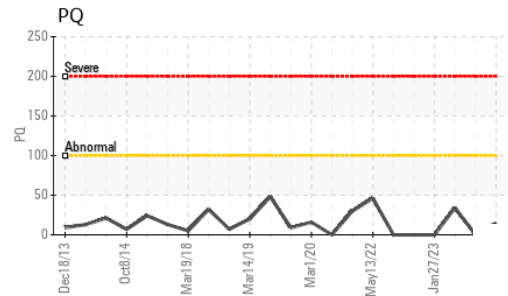
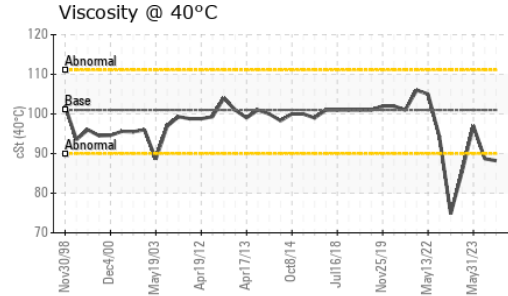
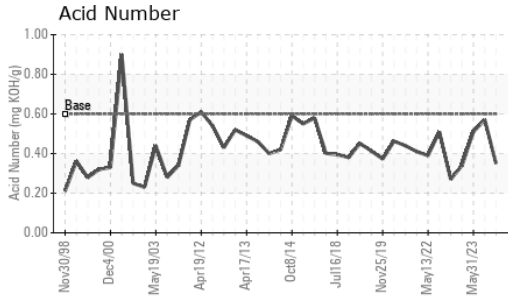
method	limit/base	current	history1	history2
Silicon	ppm ASTM D5185(m) >50	3	2	3
Sodium	ppm ASTM D5185(m)	<1	<1	<1
Potassium	ppm ASTM D5185(m) >20	1	<1	<1

FLUID DEGRADATION

method	limit/base	current	history1	history2
Acid Number (AN)	mg KOH/g ASTM D974* 0.60	0.35	0.57	0.51



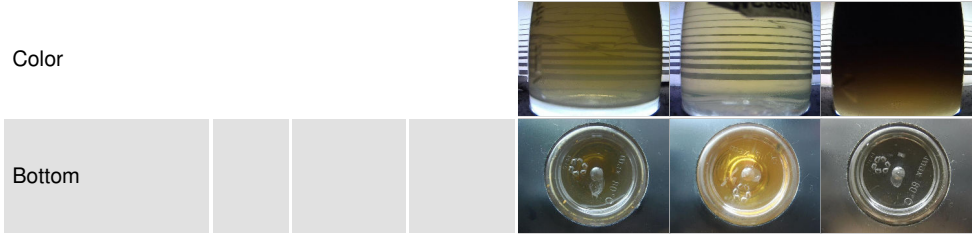
OIL ANALYSIS REPORT



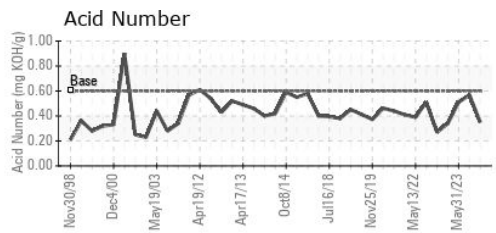
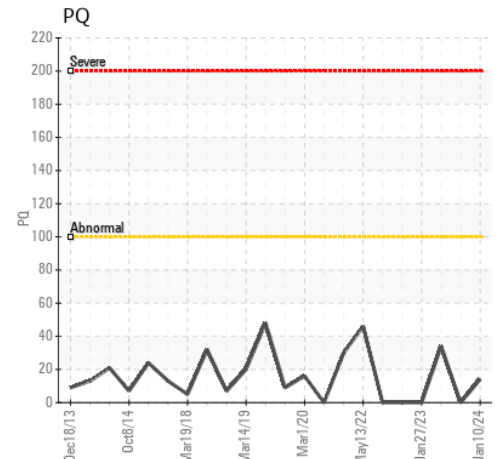
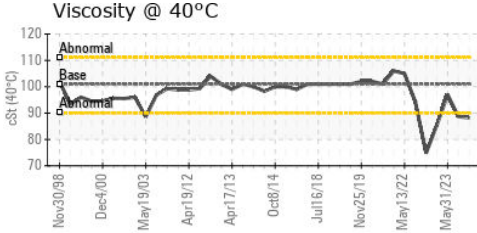
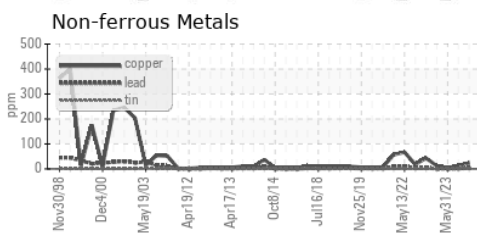
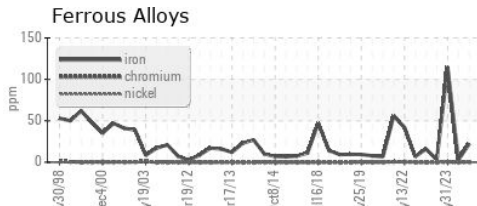
VISUAL	method	limit/base	current	history1	history2
White Metal	scalar	Visual*	NONE	NONE	NONE
Yellow Metal	scalar	Visual*	NONE	NONE	NONE
Precipitate	scalar	Visual*	NONE	NONE	NONE
Silt	scalar	Visual*	NONE	VLITE	NONE
Debris	scalar	Visual*	NONE	VLITE	NONE
Sand/Dirt	scalar	Visual*	NONE	NONE	VLITE
Appearance	scalar	Visual*	NORML	▲ LAYRD	NORML
Odor	scalar	Visual*	NORML	NORML	NORML
Emulsified Water	scalar	Visual*	>1	.2%	NEG
Free Water	scalar	Visual*		▲ >10%	NEG

FLUID PROPERTIES	method	limit/base	current	history1	history2
Visc @ 40°C	cSt	ASTM D7279(m)	101	88.2	88.7

SAMPLE IMAGES	method	limit/base	current	history1	history2
---------------	--------	------------	---------	----------	----------



GRAPHS



Laboratory : WearCheck - C8-1175 Appleby Line, Burlington, ON L7L 5H9 **STELCO - BOSC - Basic Oxygen Slab Caster**
Sample No. : WC0898672 **Received** : 10 Jan 2024 2330 Regional Road #3, Door: BOSC8
Lab Number : 02608059 **Diagnosed** : 15 Jan 2024 NANTICOKE, ON
Unique Number : 5709145 **Diagnostician** : Kevin Marson CA N0A 1L0
Test Package : IND 2

To discuss this sample report, contact Customer Service at 1-800-268-2131.
 Test denoted (*) outside scope of accreditation, (m) method modified, (e) tested at external lab.
 Validity of results and interpretation are based on the sample and information as supplied.

Contact: Tom Walden
 Thomas.Walden@stelco.com
 T: (519)587-4541
 F: (519)587-7702