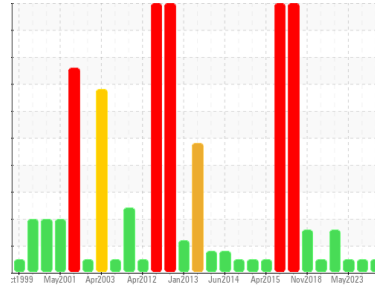




# OIL ANALYSIS REPORT

Sample Rating Trend



**NORMAL**



Area  
**PUMPHOUSE/CASTER MACHINE WATER PUMPS**  
 Machine Id  
**C - Caster Machine Water Electric Pump IB**  
 Component  
**Lube System**  
 Fluid  
**PETRO CANADA HYDREX AW 100 (1 GAL)**

## DIAGNOSIS

### Recommendation

Resample at the next service interval to monitor.

### Wear

All component wear rates are normal.

### Contamination

The system cleanliness is acceptable for your target ISO 4406 cleanliness code. The system and fluid cleanliness is acceptable.

### Fluid Condition

The AN level is acceptable for this fluid. The condition of the oil is suitable for further service.

## SAMPLE INFORMATION

method	limit/base	current	history1	history2
Sample Number	Client Info	<b>WC0898671</b>	WC0850115	WC0824396
Sample Date	Client Info	<b>10 Jan 2024</b>	16 Aug 2023	31 May 2023
Machine Age	hrs	<b>0</b>	0	0
Oil Age	hrs	<b>0</b>	0	0
Oil Changed	Client Info	<b>N/A</b>	N/A	N/A
Sample Status		<b>NORMAL</b>	NORMAL	NORMAL

## CONTAMINATION

method	limit/base	current	history1	history2
Water	WC Method >5	<b>NEG</b>	NEG	NEG

## WEAR METALS

method	limit/base	current	history1	history2
PQ	ASTM D8184* >DFLT	<b>0</b>	0	0
Iron	ppm ASTM D5185(m) >20	<b>4</b>	5	12
Chromium	ppm ASTM D5185(m) >20	<b>0</b>	0	0
Nickel	ppm ASTM D5185(m) >20	<b>&lt;1</b>	<1	0
Titanium	ppm ASTM D5185(m)	<b>0</b>	0	0
Silver	ppm ASTM D5185(m)	<b>0</b>	<1	0
Aluminum	ppm ASTM D5185(m) >20	<b>&lt;1</b>	<1	<1
Lead	ppm ASTM D5185(m) >20	<b>&lt;1</b>	0	0
Copper	ppm ASTM D5185(m) >20	<b>&lt;1</b>	<1	<1
Tin	ppm ASTM D5185(m) >20	<b>0</b>	0	0
Antimony	ppm ASTM D5185(m)	<b>0</b>	0	0
Vanadium	ppm ASTM D5185(m)	<b>0</b>	0	0
Beryllium	ppm ASTM D5185(m)	<b>0</b>	0	0
Cadmium	ppm ASTM D5185(m)	<b>0</b>	0	0

## ADDITIVES

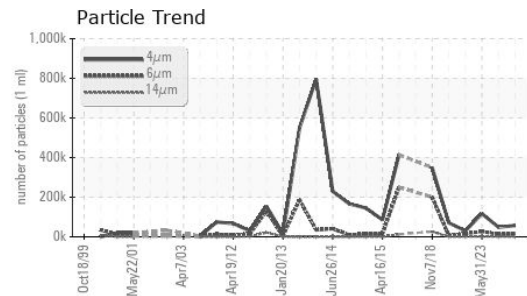
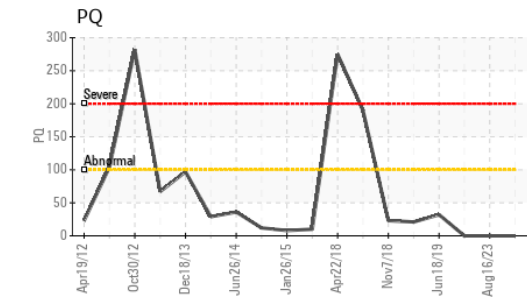
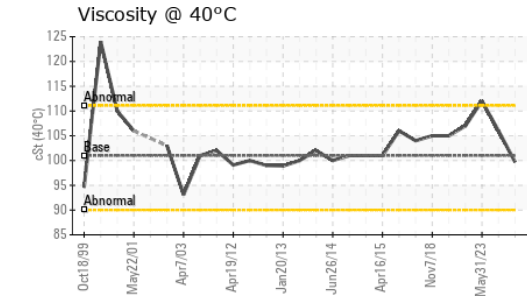
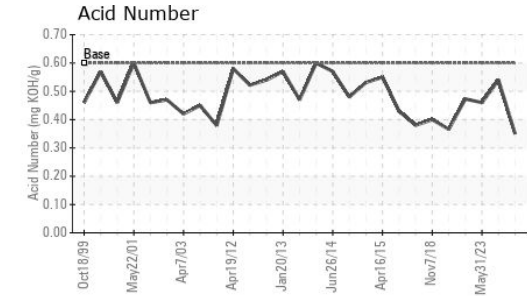
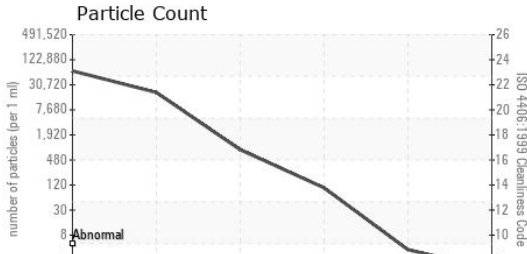
method	limit/base	current	history1	history2
Boron	ppm ASTM D5185(m) 0	<b>&lt;1</b>	<1	<1
Barium	ppm ASTM D5185(m) 0	<b>0</b>	<1	<1
Molybdenum	ppm ASTM D5185(m) 0	<b>0</b>	0	0
Manganese	ppm ASTM D5185(m) 0	<b>0</b>	0	<1
Magnesium	ppm ASTM D5185(m) 0	<b>&lt;1</b>	<1	<1
Calcium	ppm ASTM D5185(m) 50	<b>50</b>	47	46
Phosphorus	ppm ASTM D5185(m) 330	<b>335</b>	349	365
Zinc	ppm ASTM D5185(m) 430	<b>411</b>	395	366
Sulfur	ppm ASTM D5185(m) 760	<b>2851</b>	2869	3139
Lithium	ppm ASTM D5185(m)	<b>&lt;1</b>	<1	<1

## CONTAMINANTS

method	limit/base	current	history1	history2
Silicon	ppm ASTM D5185(m) >15	<b>2</b>	3	2
Sodium	ppm ASTM D5185(m)	<b>&lt;1</b>	<1	<1
Potassium	ppm ASTM D5185(m) >20	<b>&lt;1</b>	<1	<1



# OIL ANALYSIS REPORT



FLUID CLEANLINESS	method	limit/base	current	history1	history2
Particles >4µm	ASTM D7647		<b>57365</b>	48308	116882
Particles >6µm	ASTM D7647	>10240000	<b>17433</b>	12756	26960
Particles >14µm	ASTM D7647	>10240000	<b>743</b>	926	1271
Particles >21µm	ASTM D7647	>2560000	<b>91</b>	203	166
Particles >38µm	ASTM D7647	>640000	<b>3</b>	3	3
Particles >71µm	ASTM D7647	>160000	<b>1</b>	0	0
Oil Cleanliness	ISO 4406 (c)	>--/30/30	<b>23/21/17</b>	23/21/17	24/22/17

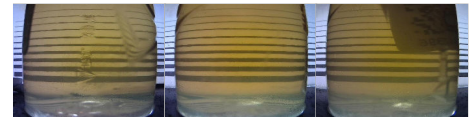
FLUID DEGRADATION	method	limit/base	current	history1	history2
Acid Number (AN)	mg KOH/g ASTM D974*	0.60	<b>0.35</b>	0.54	0.46

VISUAL	method	limit/base	current	history1	history2
White Metal	scalar Visual*	NONE	<b>NONE</b>	NONE	NONE
Yellow Metal	scalar Visual*	NONE	<b>NONE</b>	NONE	NONE
Precipitate	scalar Visual*	NONE	<b>NONE</b>	NONE	NONE
Silt	scalar Visual*	NONE	<b>NONE</b>	VLITE	NONE
Debris	scalar Visual*	NONE	<b>VLITE</b>	NONE	NONE
Sand/Dirt	scalar Visual*	NONE	<b>NONE</b>	NONE	VLITE
Appearance	scalar Visual*	NORML	<b>NORML</b>	NORML	NORML
Odor	scalar Visual*	NORML	<b>NORML</b>	NORML	NORML
Emulsified Water	scalar Visual*	>5	<b>NEG</b>	NEG	NEG
Free Water	scalar Visual*		<b>NEG</b>	NEG	NEG

FLUID PROPERTIES	method	limit/base	current	history1	history2
Visc @ 40°C	cSt ASTM D7279(m)	101	<b>99.7</b>	106	112

SAMPLE IMAGES	method	limit/base	current	history1	history2
---------------	--------	------------	---------	----------	----------

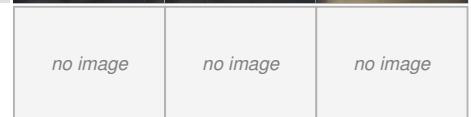
Color



Bottom



PrtFilter



**Laboratory** : WearCheck - C8-1175 Appleby Line, Burlington, ON L7L 5H9  
**Sample No.** : WC0898671  
**Lab Number** : **02608060**  
**Unique Number** : 5709146  
**Test Package** : IND 2 ( Additional Tests: PQ )

: WearCheck - C8-1175 Appleby Line, Burlington, ON L7L 5H9 **STELCO - BOSC - Basic Oxygen Slab Caster**  
 2330 Regional Road #3, Door: BOSC8  
 NANTICOKE, ON  
 CA N0A 1L0  
 Contact: Tom Walden  
 Thomas.Walden@stelco.com  
 T: (519)587-4541  
 F: (519)587-7702

**Received** : 10 Jan 2024  
**Diagnosed** : 15 Jan 2024  
**Diagnostician** : Wes Davis

To discuss this sample report, contact Customer Service at 1-800-268-2131.  
 Test denoted (\*) outside scope of accreditation, (m) method modified, (e) tested at external lab.  
 Validity of results and interpretation are based on the sample and information as supplied.