



OIL ANALYSIS REPORT

Sample Rating Trend

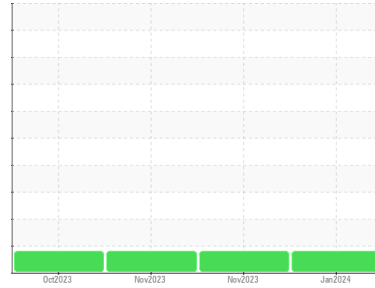
WEAR



Machine Id
MACLEAN SL3 SL06

Component
Transmission (Manual)

Fluid
PETRO CANADA PRODURO TO-4 SAE 50 (--- GAL)



DIAGNOSIS

Recommendation

The fluid change at the time of sampling has been noted. We recommend an early resample to monitor this condition.

Wear

Lead ppm levels are abnormal. Clutch disc wear indicated.

Contamination

There is no indication of any contamination in the fluid.

Fluid Condition

The fluid is no longer serviceable as a result of the abnormal and/or severe wear.

SAMPLE INFORMATION

	method	limit/base	current	history1	history2
Sample Number	Client Info		WC0892450	WC0861448	WC0871931
Sample Date	Client Info		06 Jan 2024	22 Nov 2023	02 Nov 2023
Machine Age	hrs	Client Info	2536	2048	2368
Oil Age	hrs	Client Info	0	0	0
Oil Changed	Client Info		Changed	N/A	Not Changd
Sample Status			ABNORMAL	ABNORMAL	ABNORMAL

CONTAMINATION

	method	limit/base	current	history1	history2
Water	WC Method	>0.1	NEG	NEG	NEG

WEAR METALS

	method	limit/base	current	history1	history2	
Iron	ppm	ASTM D5185(m)	>200	5	5	10
Chromium	ppm	ASTM D5185(m)	>5	0	0	0
Nickel	ppm	ASTM D5185(m)	>5	0	<1	0
Titanium	ppm	ASTM D5185(m)		0	0	0
Silver	ppm	ASTM D5185(m)	>7	0	<1	<1
Aluminum	ppm	ASTM D5185(m)	>25	3	2	8
Lead	ppm	ASTM D5185(m)	>45	▲ 58	▲ 53	▲ 51
Copper	ppm	ASTM D5185(m)	>225	12	11	11
Tin	ppm	ASTM D5185(m)	>10	0	0	0
Antimony	ppm	ASTM D5185(m)		0	0	0
Vanadium	ppm	ASTM D5185(m)		0	0	0
Beryllium	ppm	ASTM D5185(m)		0	0	0
Cadmium	ppm	ASTM D5185(m)		0	0	0

ADDITIVES

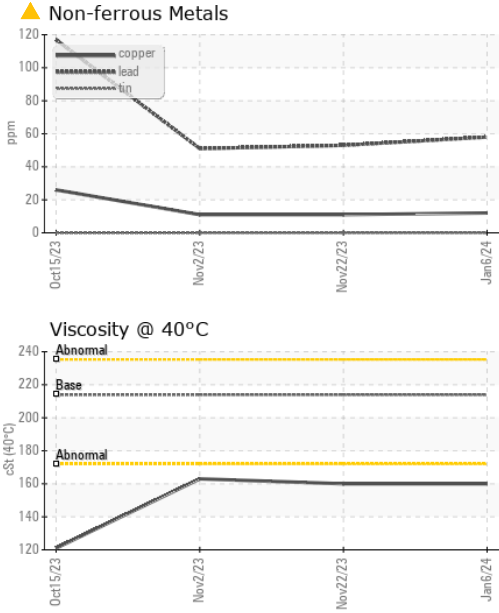
	method	limit/base	current	history1	history2	
Boron	ppm	ASTM D5185(m)	2	7	8	7
Barium	ppm	ASTM D5185(m)	0	0	<1	<1
Molybdenum	ppm	ASTM D5185(m)	0	9	9	9
Manganese	ppm	ASTM D5185(m)	0	0	0	0
Magnesium	ppm	ASTM D5185(m)	9	152	150	153
Calcium	ppm	ASTM D5185(m)	3114	3102	3116	3092
Phosphorus	ppm	ASTM D5185(m)	1099	930	915	923
Zinc	ppm	ASTM D5185(m)	1245	1057	1083	1110
Sulfur	ppm	ASTM D5185(m)	7086	9560	9034	9413
Lithium	ppm	ASTM D5185(m)		<1	<1	<1

CONTAMINANTS

	method	limit/base	current	history1	history2	
Silicon	ppm	ASTM D5185(m)	>125	5	5	20
Sodium	ppm	ASTM D5185(m)		2	2	4
Potassium	ppm	ASTM D5185(m)	>20	<1	0	2



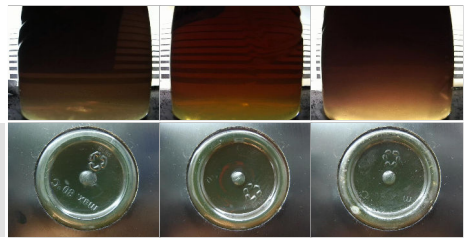
OIL ANALYSIS REPORT



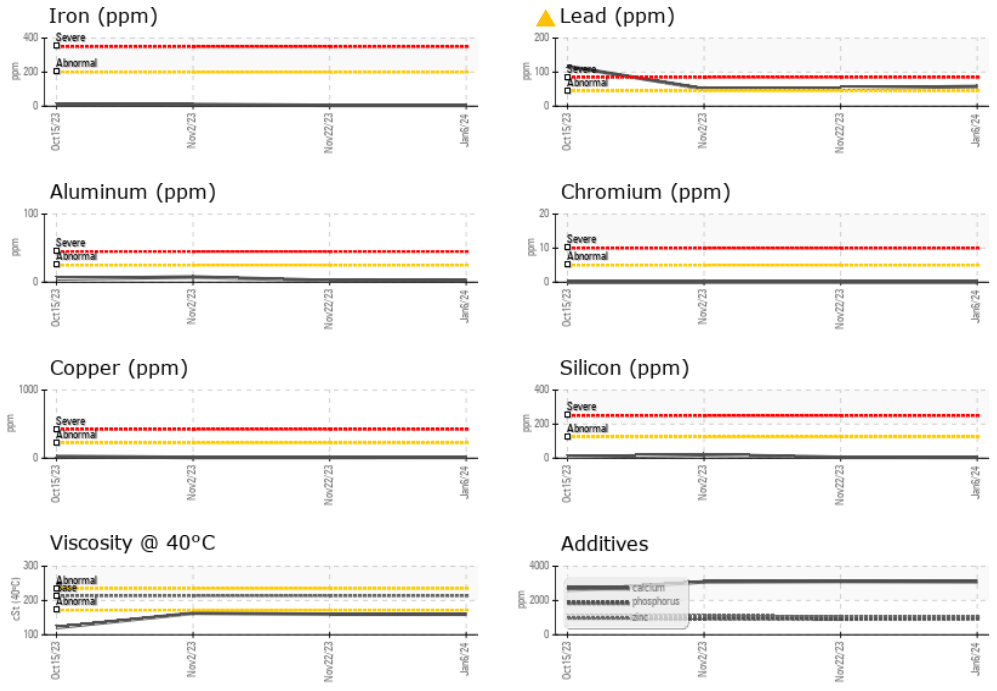
VISUAL	method	limit/base	current	history1	history2
White Metal	scalar	Visual*	NONE	NONE	NONE
Yellow Metal	scalar	Visual*	NONE	NONE	NONE
Precipitate	scalar	Visual*	NONE	NONE	NONE
Silt	scalar	Visual*	NONE	NONE	NONE
Debris	scalar	Visual*	NONE	NONE	NONE
Sand/Dirt	scalar	Visual*	NONE	NONE	NONE
Appearance	scalar	Visual*	NORML	NORML	NORML
Odor	scalar	Visual*	NORML	NORML	NORML
Emulsified Water	scalar	Visual*	>0.1	NEG	NEG
Free Water	scalar	Visual*		NEG	NEG

FLUID PROPERTIES	method	limit/base	current	history1	history2
Visc @ 40°C	cSt	ASTM D7279(m)	213.9	160	163

SAMPLE IMAGES	method	limit/base	current	history1	history2
Color					
Bottom					



GRAPHS



Laboratory : WearCheck - C8-1175 Appleby Line, Burlington, ON L7L 5H9
Sample No. : WC0892450 **Received** : 17 Jan 2024
Lab Number : 02609448 **Diagnosed** : 17 Jan 2024
Unique Number : 5710534 **Diagnostician** : Kevin Marson
Test Package : MOB 1

Agnico Eagle Canada
 1350 Government Rd. W, MACASSA COMPLEX
 Kirkland Lake, ON
 CA P2N 3J1
 Contact: Mike Campbell
 mike.campbell@agnicoeagle.com
 T: (705)567-5208
 F: (705)567-5221

To discuss this sample report, contact Customer Service at 1-800-268-2131.
 Test denoted (*) outside scope of accreditation, (m) method modified, (e) tested at external lab.
 Validity of results and interpretation are based on the sample and information as supplied.