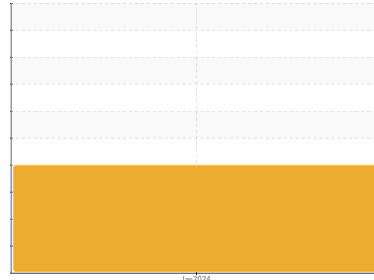




COOLANT REPORT

Sample Rating Trend



SCAS



Machine Id
OJ032752

Component
Coolant
Fluid

CONVENTIONAL COOLANT (--- GAL)

DIAGNOSIS

▲ Recommendation

We recommend drain system, and refill with 50/50 antifreeze water mixture. We advise that you replenish the supplemental coolant additives (SCAs) and add per manufacturer's specifications. Resample at the next service interval to monitor.

Corrosion

All metal levels are normal indicating no corrosion in the cooling system.

Contaminants

There is no indication of any contamination in the coolant.

▲ Coolant Condition

The reserve alkalinity of this fluid is lower than acceptable. The low nitrite level indicates reduced cavitation protection which leads to corrosion and ammonia formation. The pH is low which causes rust formation.

SAMPLE INFORMATION

method	limit/base	current	history1	history2
Sample Number	Client Info	WC0880010	---	---
Sample Date	Client Info	03 Jan 2024	---	---
Machine Age	hrs	0	---	---
Oil Age	hrs	0	---	---
Oil Changed	Client Info	N/A	---	---
Sample Status		ABNORMAL	---	---

PHYSICAL TEST RESULTS

method	limit/base	current	history1	history2
Specific Gravity	ASTM D1298*	1.079	---	---
pH	Scale 0-14	▲ 7.36	---	---
Nitrites	ppm	▲ 440	---	---
Reserve Alkalinity	Scale 0-20	▲ 2.0	---	---
Percentage Glycol	%	59.8	---	---
Freezing Point	°C	-56	---	---
Carboxylate		---	---	---

CORROSION INHIBITORS

method	limit/base	current	history1	history2
Silicon	ppm	34	---	---
Phosphorus	ppm	14	---	---
Boron	ppm	146	---	---
Molybdenum	ppm	56	---	---

CORROSION

method	limit/base	current	history1	history2
Iron	ppm	2	---	---
Aluminum	ppm	1	---	---
Copper	ppm	0	---	---
Lead	ppm	0	---	---
Tin	ppm	0	---	---
Silver	ppm	<1	---	---
Zinc	ppm	1	---	---

CARRIER SALTS

method	limit/base	current	history1	history2
Sodium	ppm	2177	---	---
Potassium	ppm	2894	---	---

SCALE POTENTIAL

method	limit/base	current	history1	history2
Calcium	ppm	4	---	---
Magnesium	ppm	<1	---	---
Hardness	mg/L CaCO3	13	---	---

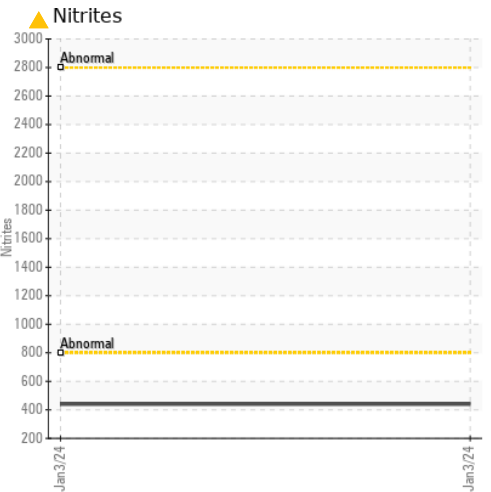
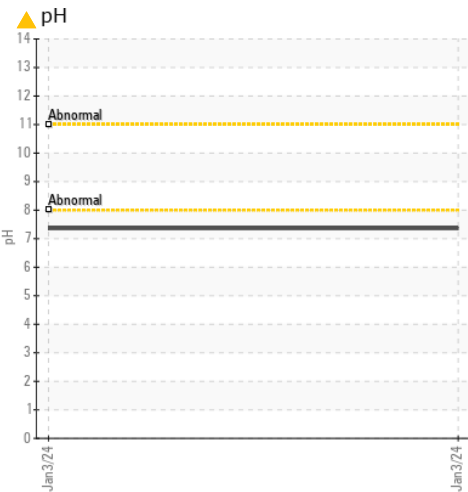
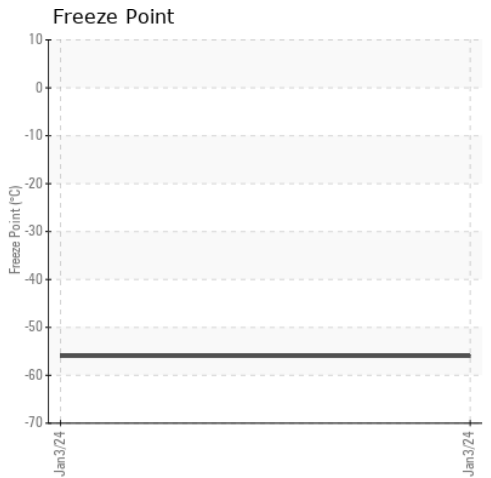
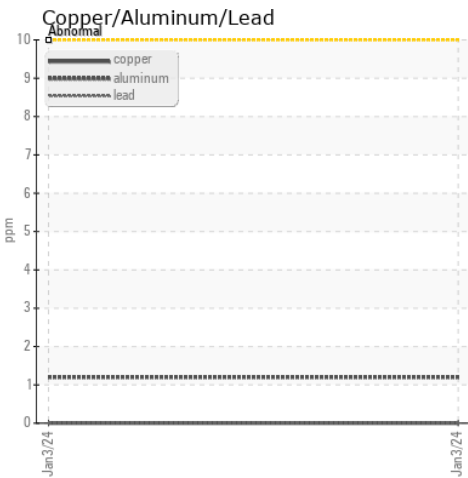
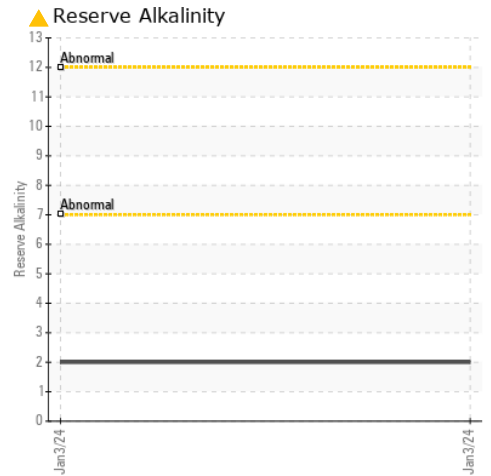
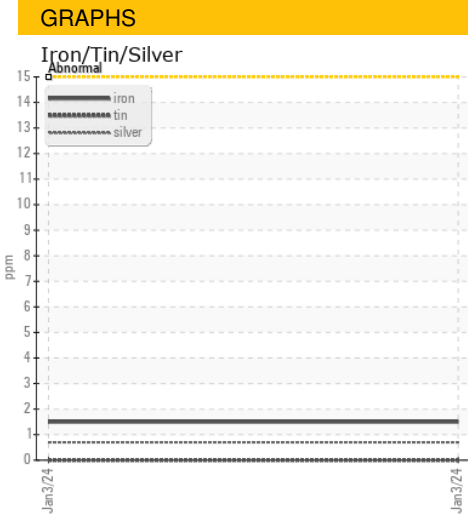
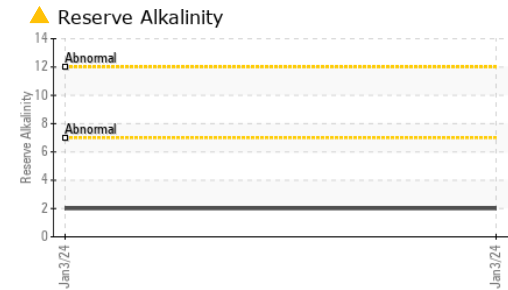
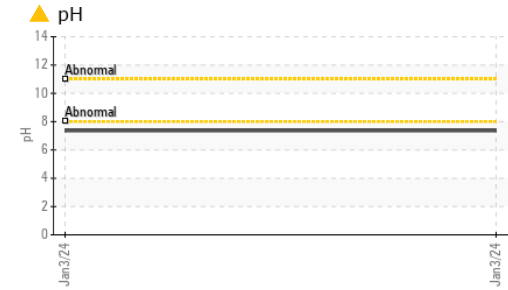
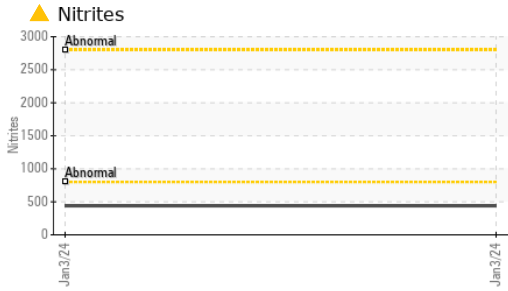
VISUAL

method	limit/base	current	history1	history2
Coolant Color	Visual*	Grn/Yellow	---	---
Coolant Appearance	Visual*	Clear	---	---

Color		no image	no image
Bottom		no image	no image



COOLANT REPORT



Laboratory : WearCheck - C8-1175 Appleby Line, Burlington, ON L7L 5H9
Sample No. : WC0880010 **Recieved** : 17 Jan 2024
Lab Number : 02609548 **Diagnosed** : 19 Jan 2024
Unique Number : 5710634 **Diagnostician** : Kevin Marson
Test Package : COOL

To discuss this sample report, contact Customer Service at 1-800-268-2131.
 Test denoted (*) outside scope of accreditation, (m) method modified, (e) tested at external lab.
 Validity of results and interpretation are based on the sample and information as supplied.

GENREP LIMITED
 25 GIFFORD STREET
 NEPEAN, ON
 CA K2E 7S3
 Contact: Carmen Lavryssen
 servicedesk@genrep.com
 T: (613)225-9244
 F: (613)225-4690