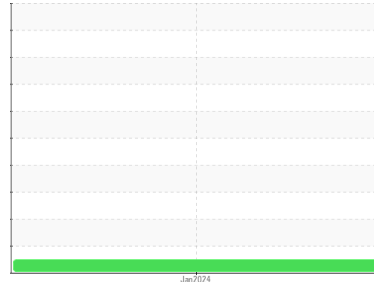




FUEL REPORT

Sample Rating Trend

NORMAL



Machine Id
OEM
 Component
Solvent
 Fluid

MILITARY MIL-PRF-7024F TYPE II CALIBRATION (--- GAL)

DIAGNOSIS

Recommendation

This is a baseline read-out on the submitted sample.

Wear

{not applicable}

Contamination

{not applicable}

Fluid Condition

{not applicable}

SAMPLE INFORMATION

	method	limit/base	current	history1	history2
Sample Number	Client Info		WC0887307	---	---
Sample Date	Client Info		15 Jan 2024	---	---
Machine Age	hrs	Client Info	0	---	---
Oil Age	hrs	Client Info	0	---	---
Oil Changed	Client Info		N/A	---	---
Sample Status			NORMAL	---	---

PHYSICAL PROPERTIES

	method	limit/base	current	history1	history2
Specific Gravity	ASTM D1298*		0.835	---	---
Fuel Color	text	Visual Screen*	Yellow	---	---
Visc @ 40°C	cSt	ASTM D7279(m)	1.0	---	---
Pensky-Martens Flash Point	°C	ASTM D7215* 38	45	---	---

SULFUR CONTENT

	method	limit/base	current	history1	history2
Sulfur	ppm	ASTM D5185(m)	20	---	---

DISTILLATION

	method	limit/base	current	history1	history2
Initial Boiling Point	°C	ASTM D2887*	163	---	---
5% Distillation Point	°C	ASTM D2887*	169	---	---
10% Distill Point	°C	ASTM D2887*	169	---	---
15% Distillation Point	°C	ASTM D2887*	170	---	---
20% Distill Point	°C	ASTM D2887*	171	---	---
30% Distill Point	°C	ASTM D2887*	171	---	---
40% Distill Point	°C	ASTM D2887*	173	---	---
50% Distill Point	°C	ASTM D2887*	175	---	---
60% Distill Point	°C	ASTM D2887*	177	---	---
70% Distill Point	°C	ASTM D2887*	178	---	---
80% Distill Point	°C	ASTM D2887*	184	---	---
85% Distillation Point	°C	ASTM D2887*	188	---	---
90% Distill Point	°C	ASTM D2887*	193	---	---
95% Distillation Point	°C	ASTM D2887*	202	---	---
Final Boiling Point	°C	ASTM D2887*	246	---	---

IGNITION QUALITY

	method	limit/base	current	history1	history2
API Gravity	ASTM D1298*		37	---	---
Cetane Index	ASTM D4737*	<40.0	22	---	---

CONTAMINANTS

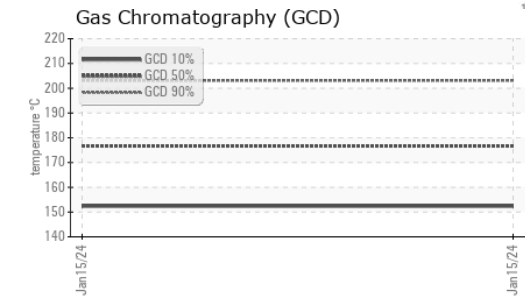
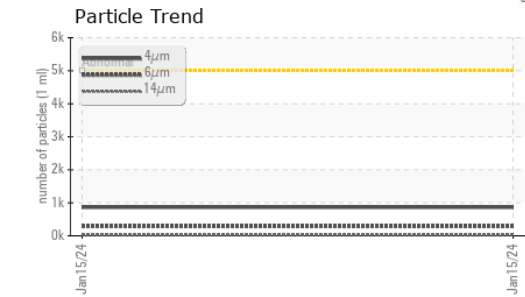
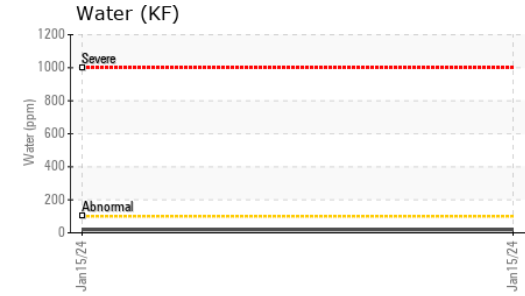
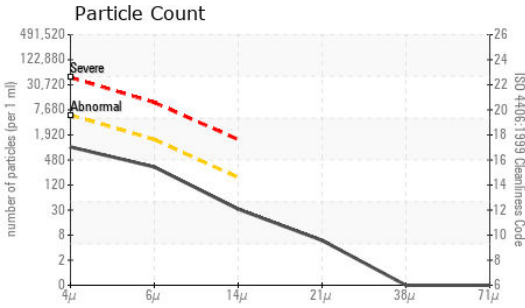
	method	limit/base	current	history1	history2
Silicon	ppm	ASTM D5185(m) <1.0	<1	---	---
Sodium	ppm	ASTM D5185(m) <0.1	<1	---	---
Potassium	ppm	ASTM D5185(m) <0.1	0	---	---
ppm Water	ppm	ASTM D6304* <500	19	---	---

FLUID CLEANLINESS

	method	limit/base	current	history1	history2
Particles >4µm	ASTM D7647	>5000	864	---	---
Particles >6µm	ASTM D7647	>1300	287	---	---
Particles >14µm	ASTM D7647	>160	28	---	---
Particles >21µm	ASTM D7647	>40	5	---	---
Particles >38µm	ASTM D7647	>10	0	---	---
Particles >71µm	ASTM D7647	>3	0	---	---



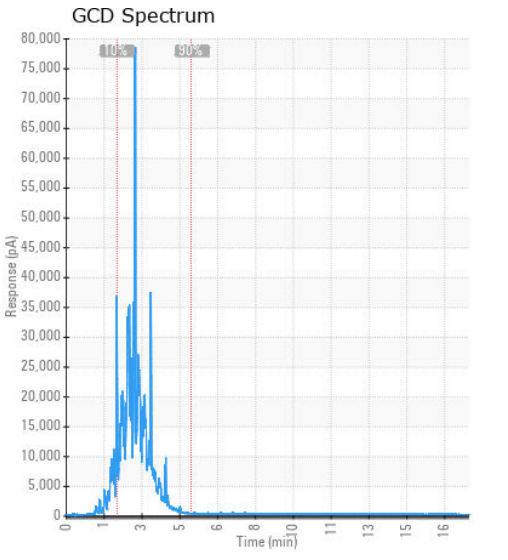
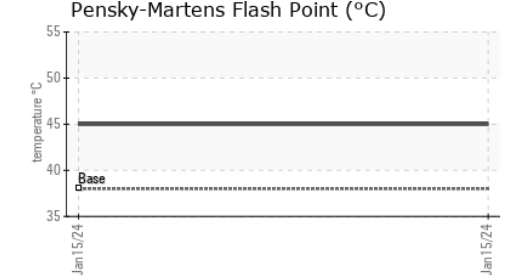
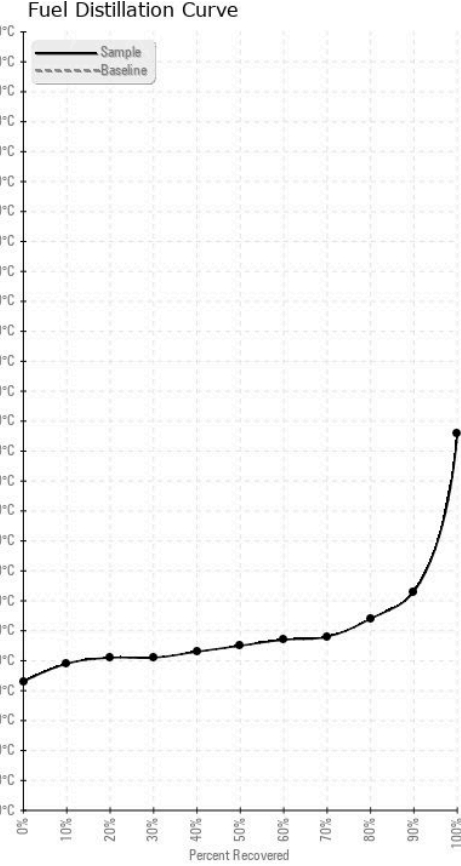
FUEL REPORT



HEAVY METALS	method	limit/base	current	history1	history2	
Aluminum	ppm	ASTM D5185(m)	<0.1	0	---	---
Nickel	ppm	ASTM D5185(m)	<0.1	0	---	---
Lead	ppm	ASTM D5185(m)	<0.1	<1	---	---
Vanadium	ppm	ASTM D5185(m)	<0.1	0	---	---
Iron	ppm	ASTM D5185(m)	<0.1	2	---	---
Calcium	ppm	ASTM D5185(m)	<0.1	0	---	---
Magnesium	ppm	ASTM D5185(m)	<0.1	0	---	---
Phosphorus	ppm	ASTM D5185(m)	<0.1	3	---	---
Zinc	ppm	ASTM D5185(m)	<0.1	<1	---	---

SAMPLE IMAGES	method	limit/base	current	history1	history2
Color				no image	no image
Bottom				no image	no image

GRAPHS



Laboratory : WearCheck - C8-1175 Appleby Line, Burlington, ON L7L 5H9
Sample No. : WC0887307 **Recieved** : 17 Jan 2024
Lab Number : 02609552 **Diagnosed** : 29 Jan 2024
Unique Number : 5710638 **Diagnostician** : Bill Quesnel
Test Package : FUEL (Additional Tests: API, CC Flash, Cetane, Fuel, GC-Perofuel, GCD, ICP, KF, KV40, PrtCount, Spa
 To discuss this sample report, contact Customer Service at 1-800-268-2131.
 Test denoted (*) outside scope of accreditation, (m) method modified, (e) tested at external lab.
 Validity of results and interpretation are based on the sample and information as supplied.

Action Aero
 91 Watts Avenue
 Charlottetown, PE
 CA C1E 2B7
 Contact: Chris Newson
 cnewson@actionaero.com
 T: (902)370-3311
 F: