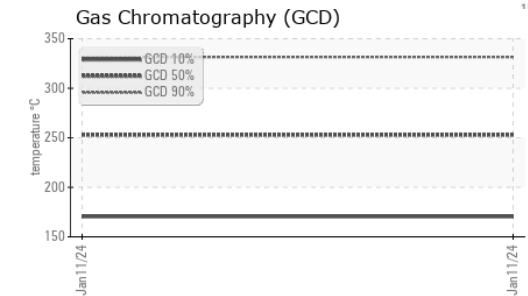
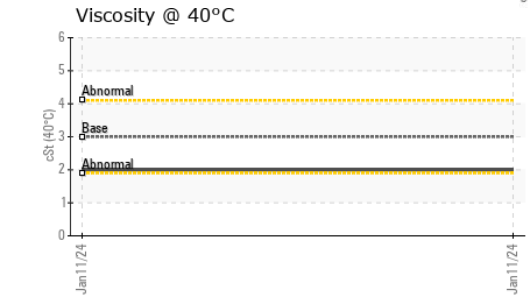
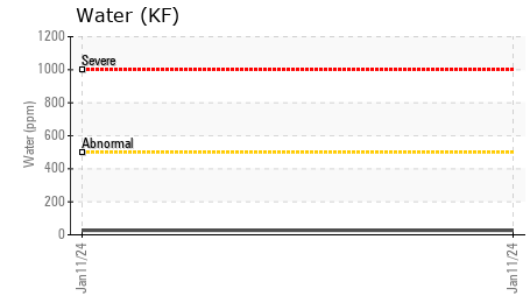
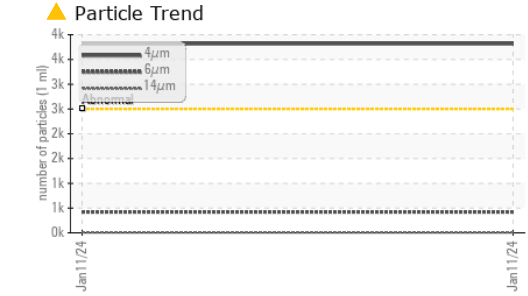
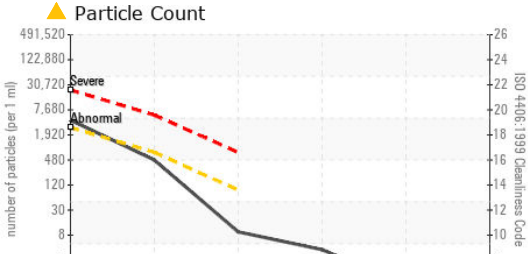






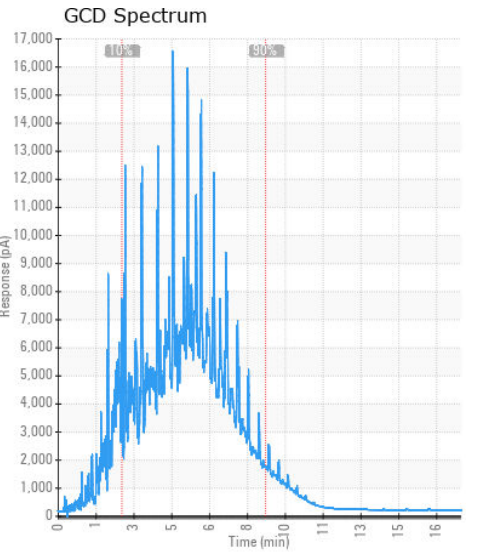
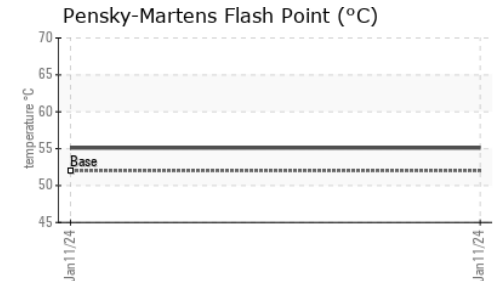
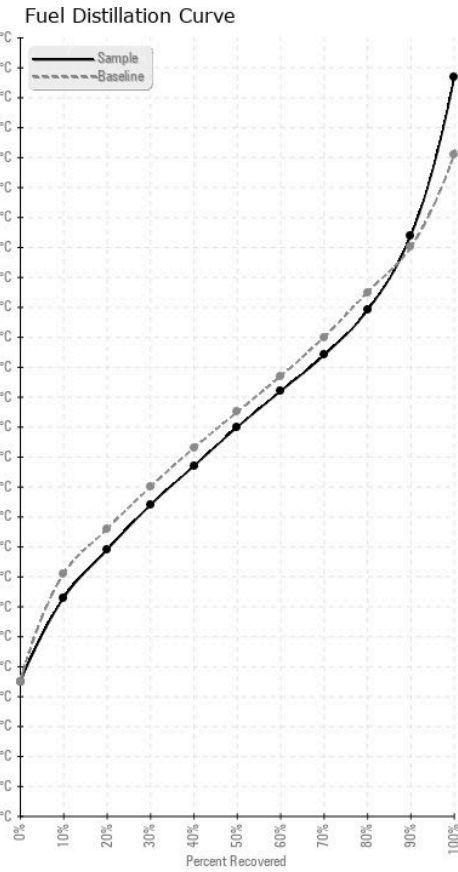
# FUEL REPORT



HEAVY METALS	method	limit/base	current	history1	history2
Aluminum	ppm	ASTM D5185(m)	<0.1	0	---
Nickel	ppm	ASTM D5185(m)	<0.1	0	---
Lead	ppm	ASTM D5185(m)	<0.1	0	---
Vanadium	ppm	ASTM D5185(m)	<0.1	0	---
Iron	ppm	ASTM D5185(m)	<0.1	0	---
Calcium	ppm	ASTM D5185(m)	<0.1	0	---
Magnesium	ppm	ASTM D5185(m)	<0.1	0	---
Phosphorus	ppm	ASTM D5185(m)	<0.1	<1	---
Zinc	ppm	ASTM D5185(m)	<0.1	<1	---

SAMPLE IMAGES	method	limit/base	current	history1	history2
Color				no image	no image
Bottom				no image	no image

## GRAPHS



**Laboratory** : WearCheck - C8-1175 Appleby Line, Burlington, ON L7L 5H9 **ATLANTIC TRAILER & EQUIPMENT**  
**Sample No.** : KT0000826 **Received** : 17 Jan 2024 **8 LINTROSE PLACE**  
**Lab Number** : 02609553 **Diagnosed** : 24 Jan 2024 **MOUNT PEARL, NL**  
**Unique Number** : 5710639 **Diagnostician** : Kevin Marson **CA A1N 5K2**  
**Test Package** : FUEL ( Additional Tests: CC Flash, GC-PercFuel, PrtCount, SPECGRAVITY ) **Contact: Service Manager**

To discuss this sample report, contact Customer Service at 1-800-268-2131.  
 Test denoted (\*) outside scope of accreditation, (m) method modified, (e) tested at external lab.  
 Validity of results and interpretation are based on the sample and information as supplied.