



FUEL REPORT

Sample Rating Trend

NORMAL



Machine Id
417481
Component
Diesel Fuel
Fluid
DIESEL FUEL No. 2 (--- GAL)



DIAGNOSIS

Recommendation

This is a baseline read-out on the submitted sample. Diagnostician's Note: There is no gasoline contamination in the diesel fuel sample.

Corrosion

{not applicable}

Contaminants

There is no indication of any contamination in the fuel.

Fuel Condition

The condition of the fuel is acceptable for the time in service (unconfirmed).

SAMPLE INFORMATION

	method	limit/base	current	history1	history2
Sample Number	Client Info		WC0796402	---	---
Sample Date	Client Info		16 Jan 2024	---	---
Machine Age	hrs	Client Info	7735	---	---
Sample Status			NORMAL	---	---

PHYSICAL PROPERTIES

	method	limit/base	current	history1	history2	
Pensky-Martens Flash Point	°C	ASTM D7215*	40	58.7	---	---

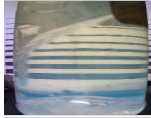
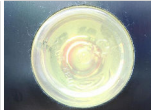
DISTILLATION

	method	limit/base	current	history1	history2	
Initial Boiling Point	°C	ASTM D2887*	174	171	---	---
5% Distillation Point	°C	ASTM D2887*		200	---	---
10% Distill Point	°C	ASTM D2887*	186	212	---	---
15% Distillation Point	°C	ASTM D2887*		220	---	---
20% Distill Point	°C	ASTM D2887*	206	228	---	---
30% Distill Point	°C	ASTM D2887*	226	242	---	---
40% Distill Point	°C	ASTM D2887*	245	253	---	---
50% Distill Point	°C	ASTM D2887*	260	265	---	---
60% Distill Point	°C	ASTM D2887*	272	277	---	---
70% Distill Point	°C	ASTM D2887*	285	289	---	---
80% Distill Point	°C	ASTM D2887*	315	302	---	---
85% Distillation Point	°C	ASTM D2887*		311	---	---
90% Distill Point	°C	ASTM D2887*	360	321	---	---
95% Distillation Point	°C	ASTM D2887*		337	---	---
Final Boiling Point	°C	ASTM D2887*	>360	366	---	---

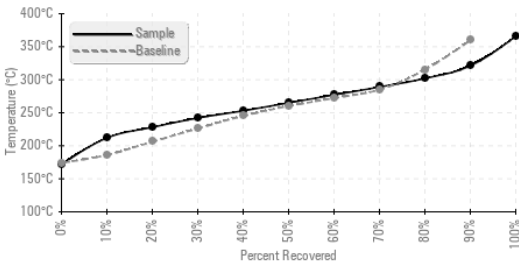
IGNITION QUALITY

	method	limit/base	current	history1	history2
Cetane Index	ASTM D4737*	<40.0	45	---	---

SAMPLE IMAGES

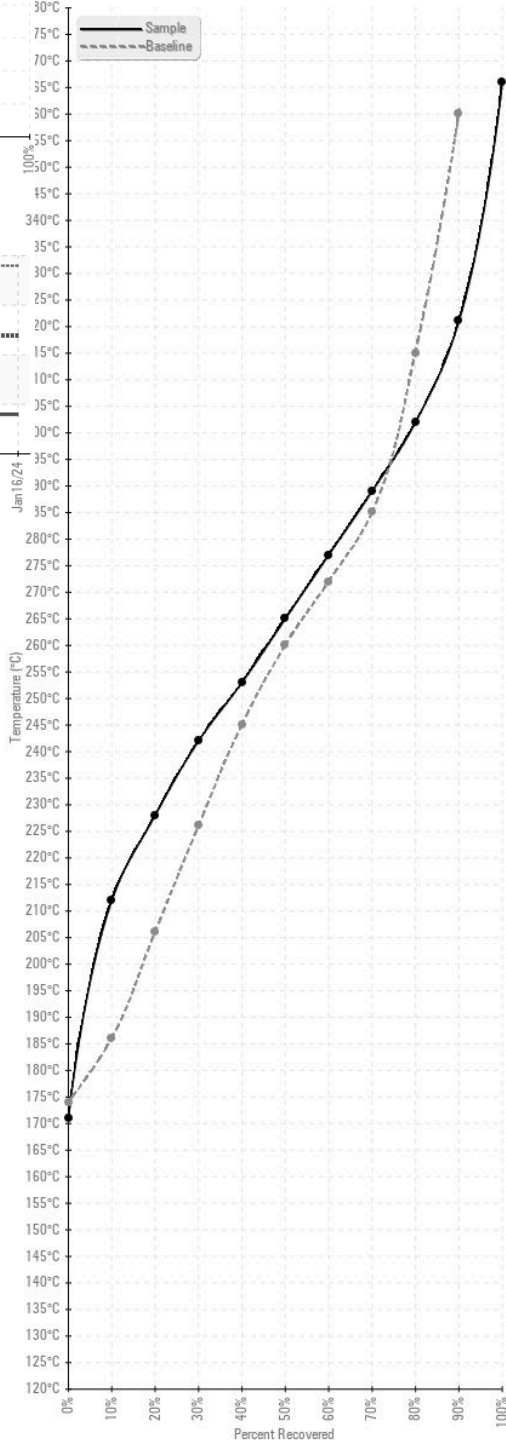
	method	limit/base	current	history1	history2
Color				no image	no image
Bottom				no image	no image

Fuel Distillation Curve

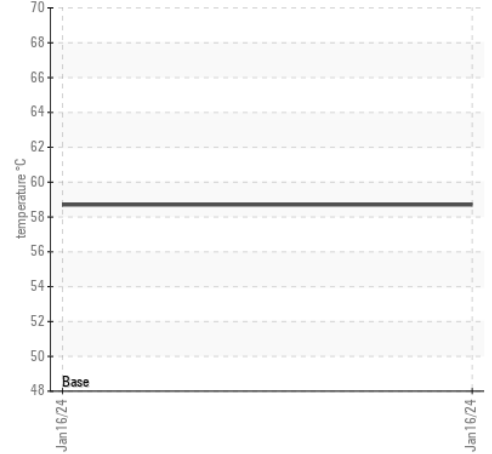


GRAPHS

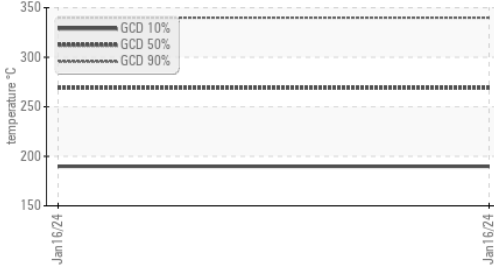
Fuel Distillation Curve



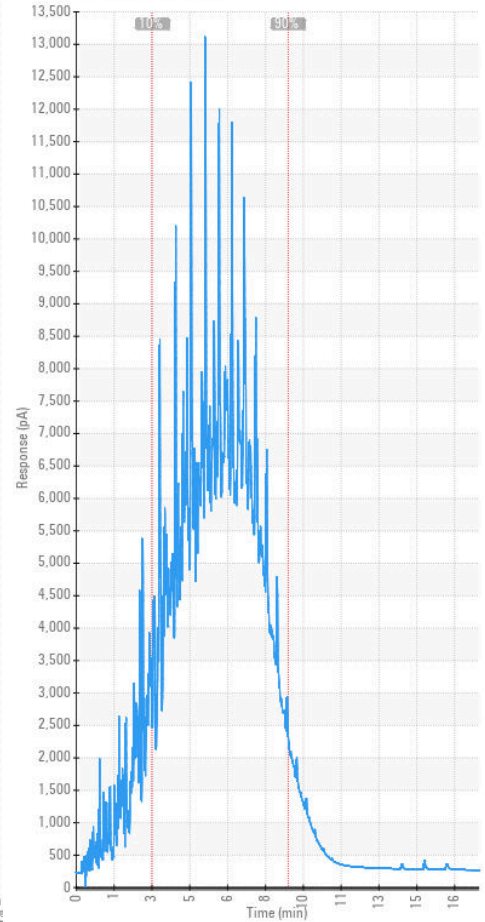
Pensky-Martens Flash Point (°C)



Gas Chromatography (GCD)



GCD Spectrum



Laboratory : WearCheck - C8-1175 Appleby Line, Burlington, ON L7L 5H9
Sample No. : WC0796402 **Received** : 17 Jan 2024
Lab Number : 02609576 **Diagnosed** : 23 Jan 2024
Unique Number : 5710662 **Diagnostician** : Kevin Marson
Test Package : TEST (Additional Tests: API, CC Flash, Cetane, Fuel, GC-PercFuel, GCD, SpecGravity)

Rush Truck Centres
 7450 Torbram Rd.
 Mississauga, ON
 CA L4T 1G9
 Contact: Serdar Okur
 sokur@rushtruckcentres.ca
 T: (905)671-7600
 F:

To discuss this sample report, contact Customer Service at 1-800-268-2131.
 Test denoted (*) outside scope of accreditation, (m) method modified, (e) tested at external lab.
 Validity of results and interpretation are based on the sample and information as supplied.