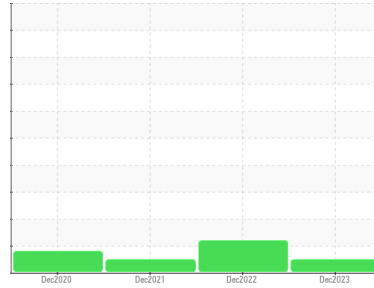




FUEL REPORT

Sample Rating Trend

NORMAL



Area
TORONTO CONDO CORP
 Machine Id
79447522

Component
Diesel Fuel
 Fluid
No.2 DIESEL FUEL (LOW-SULPHUR) (--- GAL)

DIAGNOSIS

Recommendation

Laboratory test indicate that this fuel is suitable for use and meets all test requirements. Resample at the next service interval to monitor.

Corrosion

{not applicable}

Contaminants

The system cleanliness is acceptable for your target ISO 4406 cleanliness code. The water content is negligible. There is no indication of any contamination in the diesel fuel.

Fuel Condition

All laboratory tests indicate that this sample meets specifications for No.2 ultra-low-sulfur diesel fuel (US EPA/CGSB-3.517-3 type B).

SAMPLE INFORMATION		method	limit/base	current	history1	history2
Sample Number	Client Info			CU0022397	CU0020649	CU0017711
Sample Date	Client Info			06 Dec 2023	21 Dec 2022	14 Dec 2021
Machine Age	hrs	Client Info		305	275	0
Sample Status				NORMAL	ABNORMAL	NORMAL

PHYSICAL PROPERTIES		method	limit/base	current	history1	history2
Specific Gravity		ASTM D1298*	0.839	0.848	0.846	0.844
Fuel Color	text	Visual Screen*	Yllow	Red	Red	Pink
Visc @ 40°C	cSt	ASTM D7279(m)	3.0	2.8	2.8	2.9
Pensky-Martens Flash Point	°C	ASTM D7215*	52	77.9	78.6	69.7

SULFUR CONTENT		method	limit/base	current	history1	history2
Sulfur	ppm	ASTM D5185(m)	250	14	17	43

DISTILLATION		method	limit/base	current	history1	history2
Initial Boiling Point	°C	ASTM D2887*	165	192	193	167
5% Distillation Point	°C	ASTM D2887*		210	212	195
10% Distill Point	°C	ASTM D2887*	201	217	219	205
15% Distillation Point	°C	ASTM D2887*		223	226	212
20% Distill Point	°C	ASTM D2887*	216	230	232	218
30% Distill Point	°C	ASTM D2887*	230	242	245	231
40% Distill Point	°C	ASTM D2887*	243	253	256	244
50% Distill Point	°C	ASTM D2887*	255	265	267	256
60% Distill Point	°C	ASTM D2887*	267	277	279	268
70% Distill Point	°C	ASTM D2887*	280	290	292	282
80% Distill Point	°C	ASTM D2887*	295	304	305	297
85% Distillation Point	°C	ASTM D2887*		315	316	306
90% Distill Point	°C	ASTM D2887*	310	326	327	318
95% Distillation Point	°C	ASTM D2887*		347	346	336
Final Boiling Point	°C	ASTM D2887*	341	379	365	348

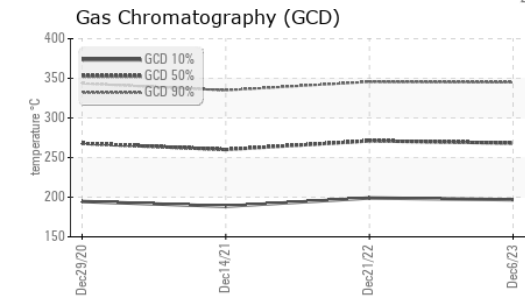
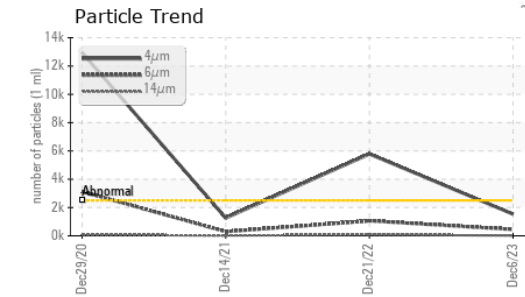
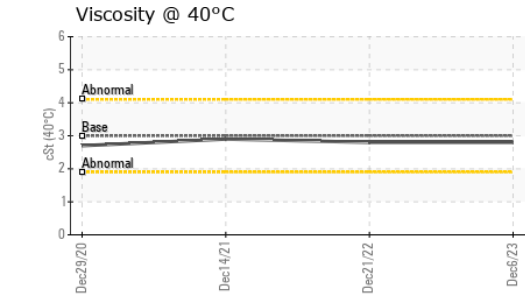
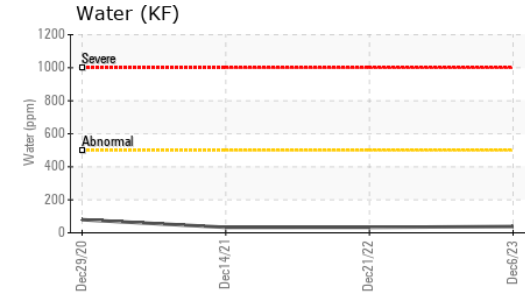
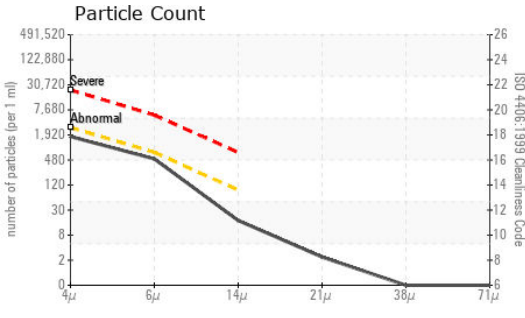
IGNITION QUALITY		method	limit/base	current	history1	history2
API Gravity		ASTM D1298*	37.7	35	35	36
Cetane Index		ASTM D4737*	<40.0	47	48	46

CONTAMINANTS		method	limit/base	current	history1	history2
Silicon	ppm	ASTM D5185(m)	<1.0	0	0	0
Sodium	ppm	ASTM D5185(m)	<0.1	0	0	<1
Potassium	ppm	ASTM D5185(m)	<0.1	0	0	0
Water	%	ASTM D6304*	<0.05	0.003	0.003	0.003
ppm Water	ppm	ASTM D6304*	<500	38	33.4	33.2

FLUID CLEANLINESS		method	limit/base	current	history1	history2
Particles >4µm		ASTM D7647	>2500	1533	▲ 5786	1258
Particles >6µm		ASTM D7647	>640	448	▲ 1060	297
Particles >14µm		ASTM D7647	>80	15	78	17
Particles >21µm		ASTM D7647	>20	2	27	4
Particles >38µm		ASTM D7647	>4	0	1	0
Particles >71µm		ASTM D7647	>3	0	0	0
Oil Cleanliness		ISO 4406 (c)	>18/16/13	18/16/11	▲ 20/17/13	17/15/11



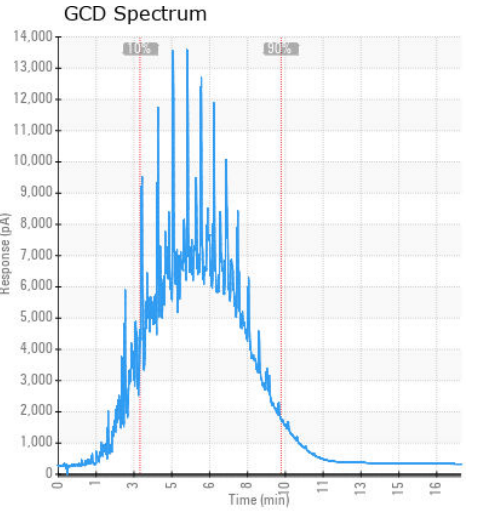
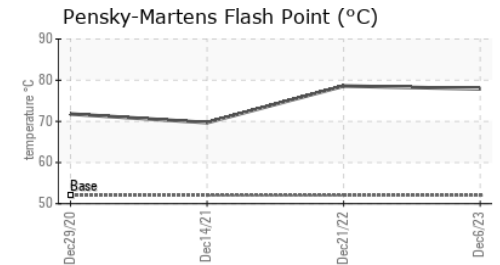
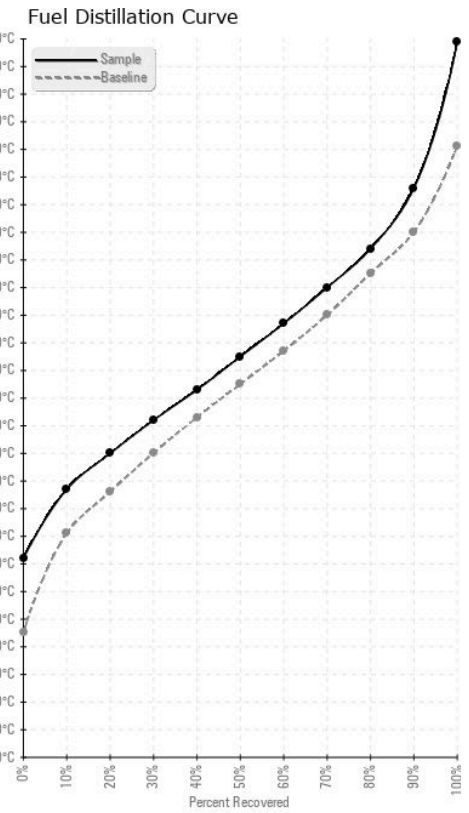
FUEL REPORT



HEAVY METALS	method	limit/base	current	history1	history2
Aluminum	ppm	ASTM D5185(m)	<0.1	0	0
Nickel	ppm	ASTM D5185(m)	<0.1	0	0
Lead	ppm	ASTM D5185(m)	<0.1	<1	<1
Vanadium	ppm	ASTM D5185(m)	<0.1	0	0
Iron	ppm	ASTM D5185(m)	<0.1	<1	<1
Calcium	ppm	ASTM D5185(m)	<0.1	<1	<1
Magnesium	ppm	ASTM D5185(m)	<0.1	<1	<1
Phosphorus	ppm	ASTM D5185(m)	<1	<1	<1
Zinc	ppm	ASTM D5185(m)	<1	<1	<1

SAMPLE IMAGES	method	limit/base	current	history1	history2
Color					
Bottom					

GRAPHS



Laboratory : WearCheck - C8-1175 Appleby Line, Burlington, ON L7L 5H9 CUMMINS CANADA ULC - GENERATOR DIVISION
Sample No. : CU0022397 **Received** : 19 Jan 2024 7175 PACIFIC CIRCLE
Lab Number : 02610054 **Diagnosed** : 22 Jan 2024 MISSISSAUGA, ON
Unique Number : 5711140 **Diagnostician** : Kevin Marson CA L5T 2A5
Test Package : FUEL (Additional Tests: CC Flash, GC-PercFuel, PrtCount)
 Contact: Elisia Johnson
 elisia.johnson@cummins.com
 T: (905)795-0050
 F: (905)795-9252

To discuss this sample report, contact Customer Service at 1-800-268-2131.
 Test denoted (*) outside scope of accreditation, (m) method modified, (e) tested at external lab.
 Validity of results and interpretation are based on the sample and information as supplied.