

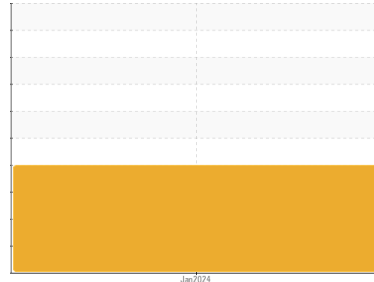


OIL ANALYSIS REPORT

Sample Rating Trend

CONTAMINANT

Area
EXCAVATION PIEKOULAGAMI [02610061]
 Machine Id
B66046
 Component
Hydraulic System
 Fluid
KLONDIKE ENVIRO AW 32 (160 LTR)



DIAGNOSIS

Recommendation

Nous vous recommandons de vidanger l'huile de ce composant si vous ne l'avez pas déjà fait. Nous vous recommandons de rincer complètement le composant avant de le remplir l'huile. Confirmez la source du lubrifiant utilisé pour l'appoint/remplissage

Wear

Les taux d'usure de tous les composants sont normaux.

Contamination

Il y a une forte concentration (75.0%) d'huile minérale présente dans le fluide. La propreté du système est acceptable pour votre objectif de propreté ISO 4406.

Fluid Condition

Les niveaux d'additifs indiquent l'ajout d'une autre marque ou d'un autre type d'huile.

SAMPLE INFORMATION

	method	limit/base	current	history1	history2
Sample Number	Client Info		WC	---	---
Sample Date	Client Info		16 Jan 2024	---	---
Machine Age	hrs	Client Info	752	---	---
Oil Age	hrs	Client Info	0	---	---
Oil Changed	Client Info		N/A	---	---
Sample Status			SEVERE	---	---

CONTAMINATION

	method	limit/base	current	history1	history2
Water	WC Method	>0.05	NEG	---	---

WEAR METALS

	method	limit/base	current	history1	history2
Iron	ppm	ASTM D5185(m) >20	2	---	---
Chromium	ppm	ASTM D5185(m) >20	0	---	---
Nickel	ppm	ASTM D5185(m) >20	<1	---	---
Titanium	ppm	ASTM D5185(m)	0	---	---
Silver	ppm	ASTM D5185(m)	0	---	---
Aluminum	ppm	ASTM D5185(m) >20	<1	---	---
Lead	ppm	ASTM D5185(m) >20	<1	---	---
Copper	ppm	ASTM D5185(m) >20	2	---	---
Tin	ppm	ASTM D5185(m) >20	0	---	---
Antimony	ppm	ASTM D5185(m)	0	---	---
Vanadium	ppm	ASTM D5185(m)	0	---	---
Beryllium	ppm	ASTM D5185(m)	0	---	---
Cadmium	ppm	ASTM D5185(m)	0	---	---

ADDITIVES

	method	limit/base	current	history1	history2
Boron	ppm	ASTM D5185(m) 0	▲ 71	---	---
Barium	ppm	ASTM D5185(m) 0	0	---	---
Molybdenum	ppm	ASTM D5185(m) 0	7	---	---
Manganese	ppm	ASTM D5185(m)	0	---	---
Magnesium	ppm	ASTM D5185(m) 0	2	---	---
Calcium	ppm	ASTM D5185(m) 10	▲ 632	---	---
Phosphorus	ppm	ASTM D5185(m) 50	▲ 257	---	---
Zinc	ppm	ASTM D5185(m) 5	▲ 223	---	---
Sulfur	ppm	ASTM D5185(m) 250	▲ 857	---	---
Lithium	ppm	ASTM D5185(m)	<1	---	---

CONTAMINANTS

	method	limit/base	current	history1	history2
Silicon	ppm	ASTM D5185(m) >15	3	---	---
Sodium	ppm	ASTM D5185(m)	1	---	---
Potassium	ppm	ASTM D5185(m) >20	<1	---	---

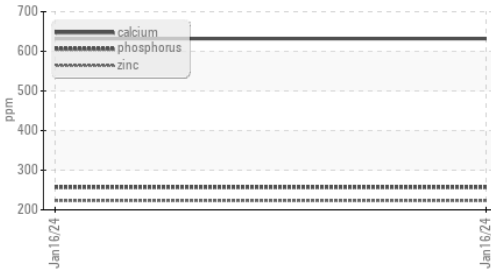
INFRA-RED

	method	limit/base	current	history1	history2
Soot %	%	ASTM D7844*	0	---	---
Nitration	Abs/cm	ASTM D7624*	2.2	---	---
Sulfation	Abs/.1mm	ASTM D7415*	12.1	---	---
Mineral Oil Content	%	ASTM D7418*	● 75.0	---	---

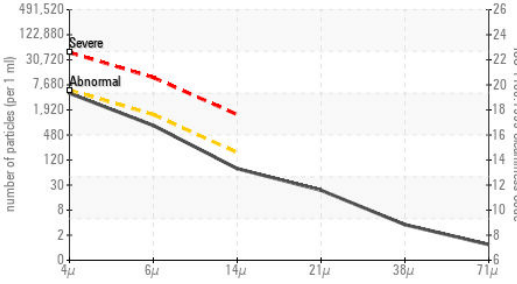


OIL ANALYSIS REPORT

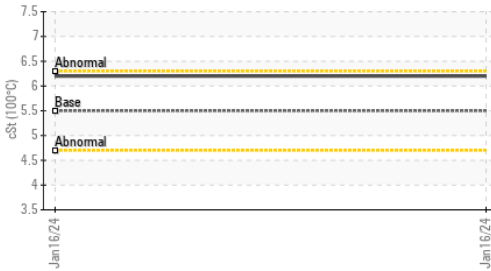
Additives



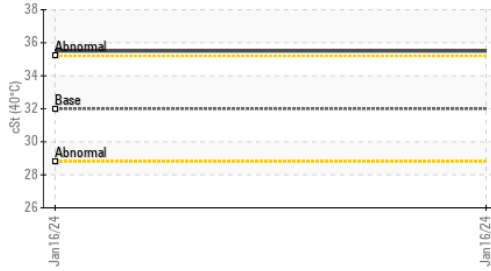
Particle Count



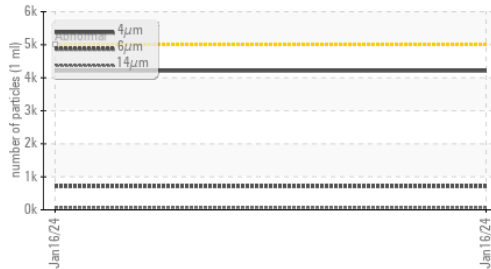
Viscosity @ 100°C



Viscosity @ 40°C



Particle Trend



FLUID CLEANLINESS	method	limit/base	current	history1	history2
Particles >4µm	ASTM D7647	>5000	4209	---	---
Particles >6µm	ASTM D7647	>1300	712	---	---
Particles >14µm	ASTM D7647	>160	66	---	---
Particles >21µm	ASTM D7647	>40	20	---	---
Particles >38µm	ASTM D7647	>10	3	---	---
Particles >71µm	ASTM D7647	>3	1	---	---
Oil Cleanliness	ISO 4406 (c)	>19/17/14	19/17/13	---	---

FLUID DEGRADATION	method	limit/base	current	history1	history2
Oxidation	Abs/.1mm	ASTM D7414*	3.8	---	---

VISUAL	method	limit/base	current	history1	history2
White Metal	scalar	Visual*	NONE	NONE	---
Yellow Metal	scalar	Visual*	NONE	NONE	---
Precipitate	scalar	Visual*	NONE	NONE	---
Silt	scalar	Visual*	NONE	NONE	---
Debris	scalar	Visual*	NONE	NONE	---
Sand/Dirt	scalar	Visual*	NONE	NONE	---
Appearance	scalar	Visual*	NORML	NORML	---
Odor	scalar	Visual*	NORML	NORML	---
Emulsified Water	scalar	Visual*	>0.05	NEG	---
Free Water	scalar	Visual*		NEG	---

FLUID PROPERTIES	method	limit/base	current	history1	history2
Visc @ 40°C	cSt	ASTM D7279(m)	32.0	35.5	---
Visc @ 100°C	cSt	ASTM D7279(m)	5.5	6.2	---
Viscosity Index (VI)	Scale	ASTM D2270*	108	123	---

SAMPLE IMAGES

method	limit/base	current	history1	history2
Color			no image	no image
Bottom			no image	no image



ISO 17025:2017
Accredited
Laboratory

Laboratory : WearCheck - C8-1175 Appleby Line, Burlington, ON L7L 5H9
Sample No. : WC
Lab Number : **02610062**
Unique Number : 5711148
Test Package : MOB 2 (Additional Tests: FT-IR, KV100, Mineral Oil Content, VI)

Received : 19 Jan 2024
Diagnosed : 23 Jan 2024
Diagnostician : Bill Quesnel

To discuss this sample report, contact Customer Service at 1-800-268-2131.
 Test denoted (*) outside scope of accreditation, (m) method modified, (e) tested at external lab.
 Validity of results and interpretation are based on the sample and information as supplied.

Guydrolic Services Inc.
 595 Rue Saint-Cyrille
 Normandin, QC
 CA G8M 4H3
 Contact: Vital Turcotte
 vturcotte@guydrolic.com
 T: (418)274-1177
 F:



MINERAL OIL CONTENT REPORT

FAIL

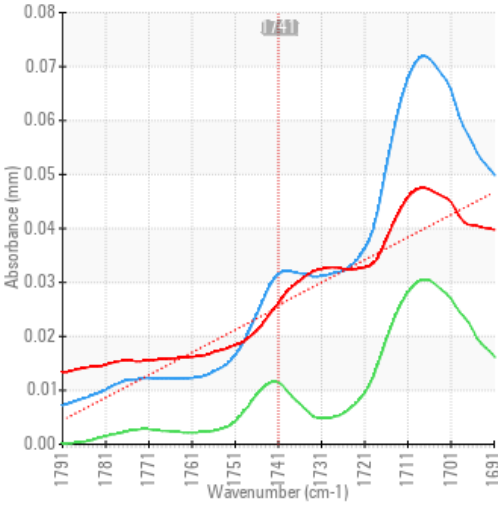


Area
EXCAVATION PIEKOULAGAMI [02610061]
 Machine Id
B66046
 Component
Hydraulic System
 Fluid
KLONDIKE ENVIRO AW 32 (160 LTR)

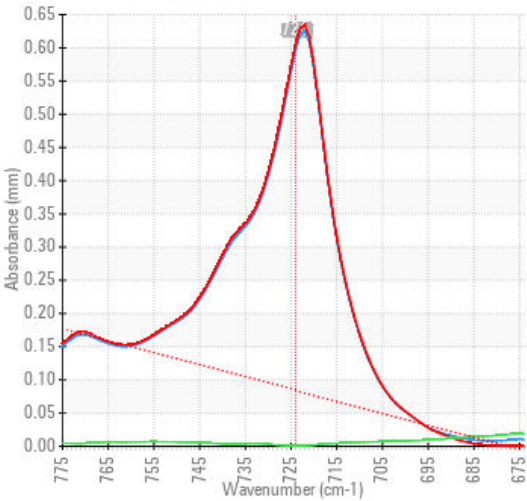
SPECTRAL ANALYSIS

		method	limit/base	current	history1	history2
Zinc	ppm	ASTM D5185(m)	5	▲ 223	---	---
Mineral Oil Content	%	ASTM D7418*	<5.0%	◆ 75.0	---	---

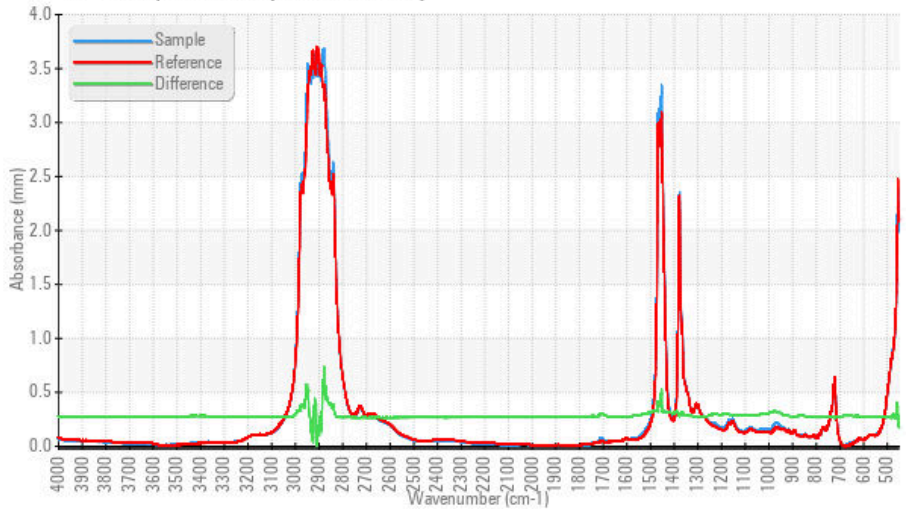
FT-IR - Esters I



FT-IR - Esters II



FT-IR Spectrum (Absorbance)



Laboratory : WearCheck - C8-1175 Appleby Line, Burlington, ON L7L 5H9
Sample No. : WC
Lab Number : 02610062
Unique Number : 5711148
Test Package : MOB 2 (Additional Tests: FT-IR, KV100, Mineral Oil Content, VI)

Received : 19 Jan 2024

Diagnosed : 23 Jan 2024

Diagnostician : Bill Quesnel

To discuss this sample report, contact Customer Service at 1-800-268-2131.
 Test denoted (*) outside scope of accreditation, (m) method modified, (e) tested at external lab.
 Validity of results and interpretation are based on the sample and information as supplied.

Guydrolic Services Inc.
 595 Rue Saint-Cyrille
 Normandin, QC
 CA G8M 4H3
 Contact: Vital Turcotte
 vturcotte@guydrolic.com
 T: (418)274-1177
 F:

This page left intentionally blank