

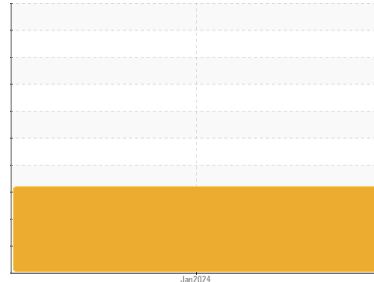


OIL ANALYSIS REPORT

Sample Rating Trend

VISUAL METAL

Area
(ZF-274)
 Machine Id
[ZF-274] G200 TWP20002-10053
 Component
Left Hydraulic System
 Fluid
SKYDROL LD-4 (--- GAL)



DIAGNOSIS

Recommendation

We advise that you check for visible metal particles in the oil. We advise that you perform a filter service, and use off-line filtration to improve the cleanliness of the system fluid. We recommend you service the filters on this component. We recommend an early resample to monitor this condition. NOTE: Please provide information regarding reservoir capacity, filter type and micron rating with next sample. We were unable to perform a particle count due to metal particles present in this sample.

Wear

Light concentration of visible metal present.

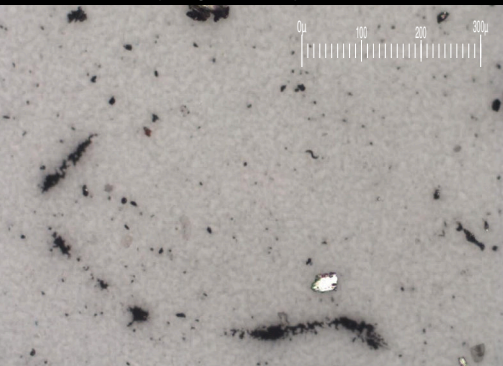
Contamination

Particles >100µm are abnormally high. Particles 15-25µm are abnormally high. Particles 25-50µm are abnormally high. Particles 50-100µm are abnormally high. Particles 5-15µm are abnormally high. The water content is negligible.

Fluid Condition

The AN level is acceptable for this fluid.

Particle Filter (Magn: 100 x)



SAMPLE INFORMATION

method	limit/base	current	history1	history2
Sample Number	Client Info	WC0833088	---	---
Sample Date	Client Info	18 Jan 2024	---	---
Machine Age	hrs Client Info	0	---	---
Oil Age	hrs Client Info	0	---	---
Oil Changed	Client Info	N/A	---	---
Sample Status		ABNORMAL	---	---

WEAR METALS

method	limit/base	current	history1	history2
Iron ppm ASTM D5185(m)	>20	2	---	---
Chromium ppm ASTM D5185(m)	>10	<1	---	---
Nickel ppm ASTM D5185(m)	>10	<1	---	---
Titanium ppm ASTM D5185(m)		0	---	---
Silver ppm ASTM D5185(m)		0	---	---
Aluminum ppm ASTM D5185(m)	>10	<1	---	---
Lead ppm ASTM D5185(m)	>20	<1	---	---
Copper ppm ASTM D5185(m)	>20	1	---	---
Tin ppm ASTM D5185(m)	>10	0	---	---
Antimony ppm ASTM D5185(m)		0	---	---
Vanadium ppm ASTM D5185(m)		0	---	---
Beryllium ppm ASTM D5185(m)		0	---	---
Cadmium ppm ASTM D5185(m)		2	---	---

ADDITIVES

method	limit/base	current	history1	history2
Boron ppm ASTM D5185(m)	0	2	---	---
Barium ppm ASTM D5185(m)	0	0	---	---
Molybdenum ppm ASTM D5185(m)	0	0	---	---
Manganese ppm ASTM D5185(m)		0	---	---
Magnesium ppm ASTM D5185(m)	0	<1	---	---
Calcium ppm ASTM D5185(m)	0	6	---	---
Phosphorus ppm ASTM D5185(m)	20000	38555	---	---
Zinc ppm ASTM D5185(m)	0	8	---	---
Sulfur ppm ASTM D5185(m)	1900	1724	---	---
Lithium ppm ASTM D5185(m)		<1	---	---

CONTAMINANTS

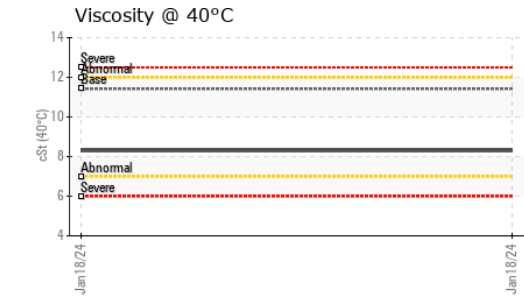
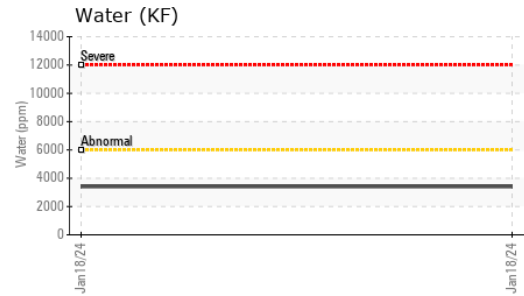
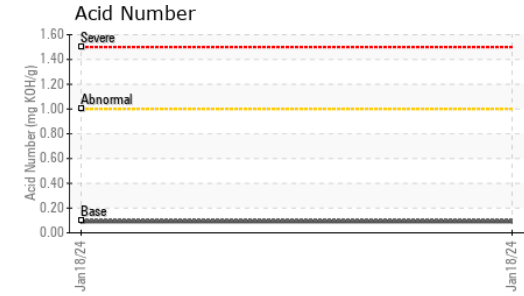
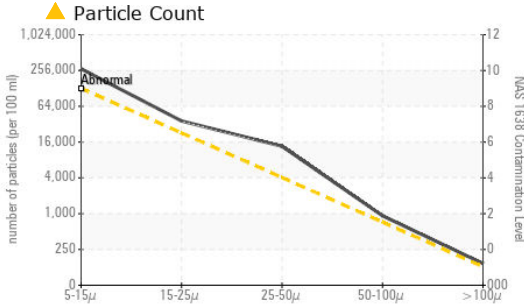
method	limit/base	current	history1	history2
Silicon ppm ASTM D5185(m)	>15	3	---	---
Sodium ppm ASTM D5185(m)		5	---	---
Potassium ppm ASTM D5185(m)	>20	16	---	---
Water % ASTM D6304*	>0.6	0.340	---	---
ppm Water ppm ASTM D6304*	>6000	3406	---	---

FLUID CLEANLINESS

method	limit/base	current	history1	history2
Particles 5-15µm count NAS 1638	>128000	▲ 273448	---	---
Particles 15-25µm count NAS 1638	>22800	▲ 36264	---	---
Particles 25-50µm count NAS 1638	>4050	▲ 13596	---	---
Particles 50-100µm count NAS 1638	>720	▲ 922	---	---
Particles >100µm count NAS 1638	>128	▲ 145	---	---
NAS 1638 Class NAS 1638	>9	11	---	---





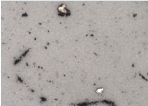
OIL ANALYSIS REPORT



FLUID DEGRADATION	method	limit/base	current	history1	history2	
Acid Number (AN)	mg KOH/g	ASTM D974*	0.10	0.09	---	---

VISUAL	method	limit/base	current	history1	history2	
White Metal	scalar	Visual*	NONE	▲ VLITE	---	---
Yellow Metal	scalar	Visual*	NONE	NONE	---	---
Precipitate	scalar	Visual*	NONE	NONE	---	---
Silt	scalar	Visual*	NONE	NONE	---	---
Debris	scalar	Visual*	NONE	NONE	---	---
Sand/Dirt	scalar	Visual*	NONE	NONE	---	---
Appearance	scalar	Visual*	NORML	NORML	---	---
Odor	scalar	Visual*	NORML	NORML	---	---
Emulsified Water	scalar	Visual*	>0.6	NEG	---	---
Free Water	scalar	Visual*		NEG	---	---

FLUID PROPERTIES	method	limit/base	current	history1	history2
Specific Gravity	ASTM D1298 *	1.009	1.020	---	---
Visc @ 40°C	ASTM D7279(m)	11.42	8.3	---	---

SAMPLE IMAGES	method	limit/base	current	history1	history2
Color				no image	no image
Bottom				no image	no image
PrtFilter				no image	no image



Laboratory : WearCheck - C8-1175 Appleby Line, Burlington, ON L7L 5H9 **SKYSERVICE BUSINESS AVIATION INC**
Sample No. : WC0833088 **Recieved** : 19 Jan 2024 6120 MIDFIELD ROAD
Lab Number : **02610068** **Diagnosed** : 23 Jan 2024 MISSISSAUGA, ON
Unique Number : 5711154 **Diagnostician** : Kevin Marson CA L4W 2P7
Test Package : IND 2 (Additional Tests: Bottom, BottomAnalysis, FilterPatch, KF, PrtCountNAS, PrtFilter, SpecGravi Contact: Crew Chief
 To discuss this sample report, contact Customer Service at 1-800-268-2131. maintenance_yyz@skyservice.com
 Test denoted (*) outside scope of accreditation, (m) method modified, (e) tested at external lab. T: (416)399-4437
 Validity of results and interpretation are based on the sample and information as supplied. F: