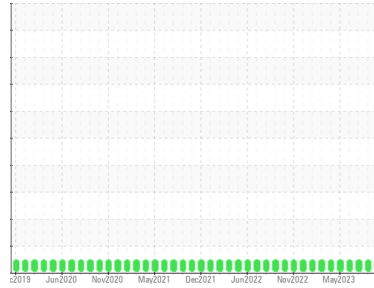




# OIL ANALYSIS REPORT

Sample Rating Trend

**NORMAL**



Area  
**Direct Strip Mill/Finishing**  
 Machine Id  
**#1 DESCALER PUMP LUBE SYSTEM (DSC041) (S/N 1000009689)**  
 Component  
**Gear Lube System**  
 Fluid  
**SHELL OMALA 68 (150 LTR)**

## DIAGNOSIS

### Recommendation

Resample at the next service interval to monitor.

### Wear

All component wear rates are normal.

### Contamination

There is no indication of any contamination in the oil.

### Fluid Condition

The AN level is acceptable for this fluid. The condition of the oil is suitable for further service.

## SAMPLE INFORMATION

	method	limit/base	current	history1	history2
Sample Number	Client Info		<b>WC0837583</b>	WC0837429	WC0837312
Sample Date	Client Info		<b>18 Jan 2024</b>	14 Nov 2023	26 Sep 2023
Machine Age	hrs	Client Info	<b>0</b>	0	0
Oil Age	hrs	Client Info	<b>0</b>	0	0
Oil Changed	Client Info		<b>N/A</b>	N/A	N/A
Sample Status			<b>NORMAL</b>	NORMAL	NORMAL

## CONTAMINATION

	method	limit/base	current	history1	history2
Water	WC Method	>0.1	<b>NEG</b>	NEG	NEG

## WEAR METALS

	method	limit/base	current	history1	history2
PQ	ASTM D8184*		<b>0</b>	0	0
Iron	ppm	ASTM D5185(m) >150	<b>0</b>	<1	0
Chromium	ppm	ASTM D5185(m) >10	<b>0</b>	0	0
Nickel	ppm	ASTM D5185(m) >10	<b>0</b>	0	0
Titanium	ppm	ASTM D5185(m)	<b>0</b>	0	0
Silver	ppm	ASTM D5185(m)	<b>0</b>	<1	<1
Aluminum	ppm	ASTM D5185(m) >25	<b>&lt;1</b>	0	<1
Lead	ppm	ASTM D5185(m) >100	<b>0</b>	0	<1
Copper	ppm	ASTM D5185(m) >50	<b>4</b>	1	1
Tin	ppm	ASTM D5185(m) >10	<b>0</b>	0	0
Antimony	ppm	ASTM D5185(m) >5	<b>0</b>	0	0
Vanadium	ppm	ASTM D5185(m)	<b>0</b>	0	0
Beryllium	ppm	ASTM D5185(m)	<b>0</b>	0	0
Cadmium	ppm	ASTM D5185(m)	<b>0</b>	0	0

## ADDITIVES

	method	limit/base	current	history1	history2
Boron	ppm	ASTM D5185(m)	<b>4</b>	4	4
Barium	ppm	ASTM D5185(m)	<b>0</b>	0	<1
Molybdenum	ppm	ASTM D5185(m)	<b>0</b>	0	0
Manganese	ppm	ASTM D5185(m)	<b>0</b>	0	0
Magnesium	ppm	ASTM D5185(m)	<b>4</b>	3	2
Calcium	ppm	ASTM D5185(m)	<b>2</b>	2	2
Phosphorus	ppm	ASTM D5185(m)	<b>175</b>	175	185
Zinc	ppm	ASTM D5185(m)	<b>3</b>	3	4
Sulfur	ppm	ASTM D5185(m)	<b>3629</b>	3607	3615
Lithium	ppm	ASTM D5185(m)	<b>&lt;1</b>	<1	<1

## CONTAMINANTS

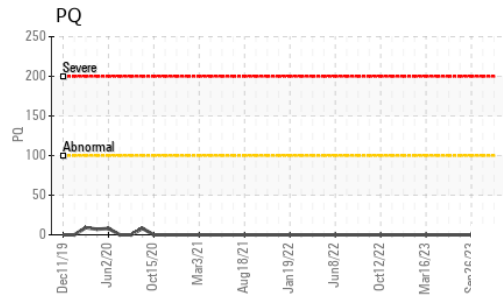
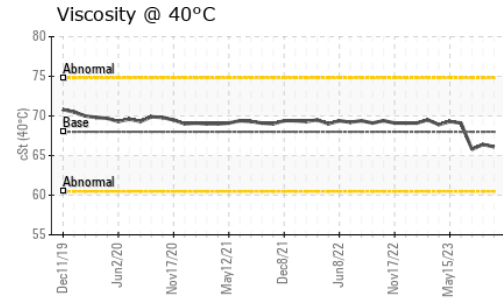
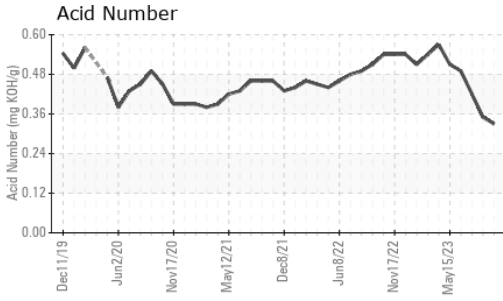
	method	limit/base	current	history1	history2
Silicon	ppm	ASTM D5185(m) >50	<b>1</b>	2	4
Sodium	ppm	ASTM D5185(m)	<b>0</b>	0	<1
Potassium	ppm	ASTM D5185(m) >20	<b>&lt;1</b>	0	0

## FLUID DEGRADATION

	method	limit/base	current	history1	history2
Acid Number (AN)	mg KOH/g	ASTM D974*	<b>0.33</b>	0.35	0.42



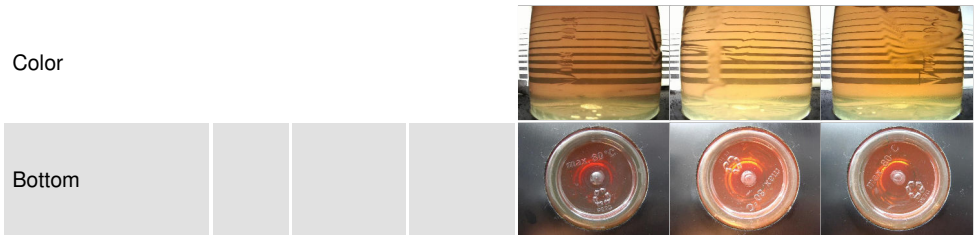
# OIL ANALYSIS REPORT



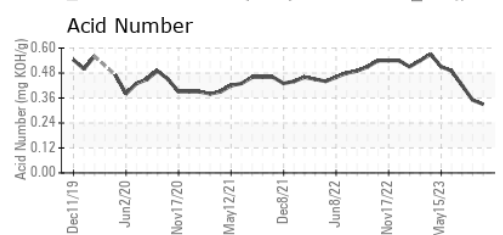
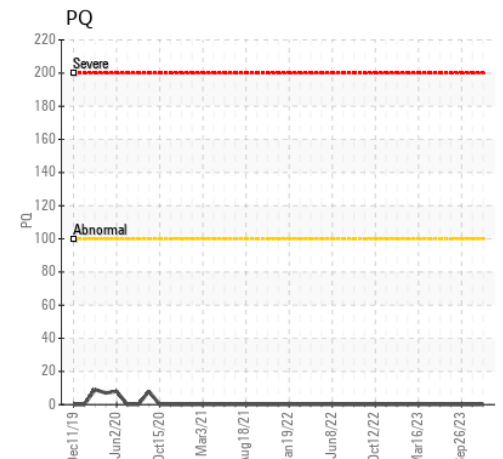
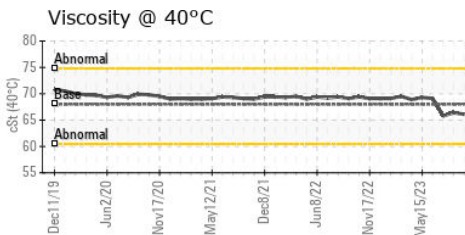
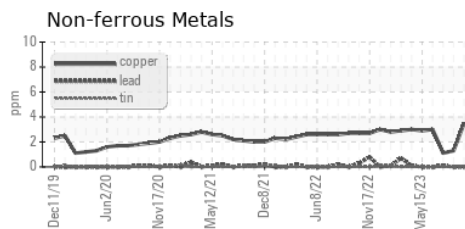
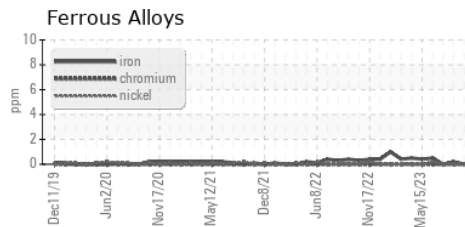
VISUAL	method	limit/base	current	history1	history2
White Metal	scalar	Visual*	NONE	NONE	NONE
Yellow Metal	scalar	Visual*	NONE	NONE	NONE
Precipitate	scalar	Visual*	NONE	NONE	NONE
Silt	scalar	Visual*	NONE	NONE	NONE
Debris	scalar	Visual*	NONE	NONE	NONE
Sand/Dirt	scalar	Visual*	NONE	NONE	NONE
Appearance	scalar	Visual*	NORML	NORML	NORML
Odor	scalar	Visual*	NORML	NORML	NORML
Emulsified Water	scalar	Visual*	>0.1	NEG	NEG
Free Water	scalar	Visual*		NEG	NEG

FLUID PROPERTIES	method	limit/base	current	history1	history2
Visc @ 40°C	cSt	ASTM D7279(m)	68.0	66.1	66.4

SAMPLE IMAGES	method	limit/base	current	history1	history2
---------------	--------	------------	---------	----------	----------



## GRAPHS



**Laboratory** : WearCheck - C8-1175 Appleby Line, Burlington, ON L7L 5H9 **ALGOMA STEEL INC. - STORES DEPT.**  
**Sample No.** : WC0837583 **Received** : 22 Jan 2024 301 WALLACE TERRACE  
**Lab Number** : 02610430 **Diagnosed** : 23 Jan 2024 SAULT STE MARIE, ON  
**Unique Number** : 5711516 **Diagnostician** : Wes Davis CA P6C 1K8  
**Test Package** : IND 2 ( Additional Tests: TAN Man ) Contact: Algoma Reliability

To discuss this sample report, contact Customer Service at 1-800-268-2131.  
 Test denoted (\*) outside scope of accreditation, (m) method modified, (e) tested at external lab.  
 Validity of results and interpretation are based on the sample and information as supplied.

algomareliability@algoma.com  
 T: (705)206-1059  
 F: (705)945-3585