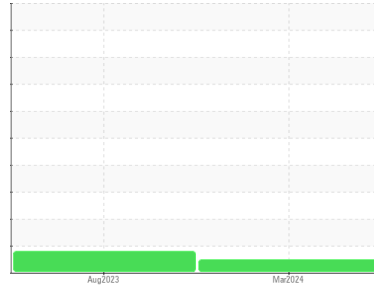




OIL ANALYSIS REPORT

Sample Rating Trend

NORMAL



Area
RONI
 Machine Id
100-035
 Component
Diesel Engine
 Fluid
PETRO CANADA 10W30 (--- GAL)

DIAGNOSIS

Recommendation

Resample at the next service interval to monitor.

Wear

All component wear rates are normal.

Contamination

There is no indication of any contamination in the oil.

Fluid Condition

Viscosity of sample indicates oil is within SAE 40 range, advise investigate. The condition of the oil is acceptable for the time in service.

SAMPLE INFORMATION		method	limit/base	current	history1	history2
Sample Number	Client Info			WC0899445	LH0275126	---
Sample Date	Client Info			09 Mar 2024	21 Aug 2023	---
Machine Age	hrs	Client Info		0	2235	---
Oil Age	hrs	Client Info		0	0	---
Oil Changed	Client Info			N/A	Changed	---
Sample Status				NORMAL	ABNORMAL	---

CONTAMINATION		method	limit/base	current	history1	history2
Fuel	WC Method	>5		<1.0	0.9	---
Water	WC Method	>0.2		NEG	NEG	---
Glycol	WC Method			NEG	NEG	---

WEAR METALS		method	limit/base	current	history1	history2
Iron	ppm	ASTM D5185(m)	>100	24	41	---
Chromium	ppm	ASTM D5185(m)	>20	2	3	---
Nickel	ppm	ASTM D5185(m)	>4	<1	<1	---
Titanium	ppm	ASTM D5185(m)		0	<1	---
Silver	ppm	ASTM D5185(m)	>3	0	0	---
Aluminum	ppm	ASTM D5185(m)	>20	15	25	---
Lead	ppm	ASTM D5185(m)	>40	<1	<1	---
Copper	ppm	ASTM D5185(m)	>330	8	11	---
Tin	ppm	ASTM D5185(m)	>15	<1	2	---
Antimony	ppm	ASTM D5185(m)		0	0	---
Vanadium	ppm	ASTM D5185(m)		0	0	---
Beryllium	ppm	ASTM D5185(m)		0	0	---
Cadmium	ppm	ASTM D5185(m)		0	0	---

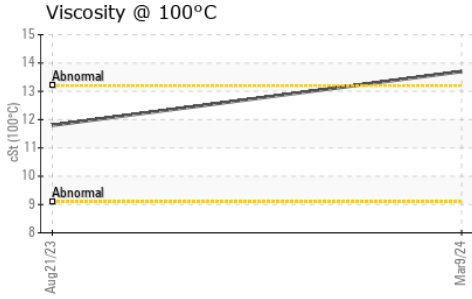
ADDITIVES		method	limit/base	current	history1	history2
Boron	ppm	ASTM D5185(m)		<1	<1	---
Barium	ppm	ASTM D5185(m)		0	<1	---
Molybdenum	ppm	ASTM D5185(m)		59	62	---
Manganese	ppm	ASTM D5185(m)		0	<1	---
Magnesium	ppm	ASTM D5185(m)		971	999	---
Calcium	ppm	ASTM D5185(m)		1065	1056	---
Phosphorus	ppm	ASTM D5185(m)		1032	1075	---
Zinc	ppm	ASTM D5185(m)		1200	1221	---
Sulfur	ppm	ASTM D5185(m)		2718	2746	---
Lithium	ppm	ASTM D5185(m)		<1	<1	---

CONTAMINANTS		method	limit/base	current	history1	history2
Silicon	ppm	ASTM D5185(m)	>25	6	11	---
Sodium	ppm	ASTM D5185(m)		2	3	---
Potassium	ppm	ASTM D5185(m)	>20	9	26	---

INFRA-RED		method	limit/base	current	history1	history2
Soot %	%	ASTM D7844*	>3	0.2	0.3	---
Nitration	Abs/cm	ASTM D7624*	>20	8.4	10.3	---
Sulfation	Abs./1mm	ASTM D7415*	>30	18.6	21.0	---



OIL ANALYSIS REPORT



FLUID DEGRADATION

	method	limit/base	current	history1	history2
Oxidation	Abs./1mm	ASTM D7414*	>25	15.6	17.4

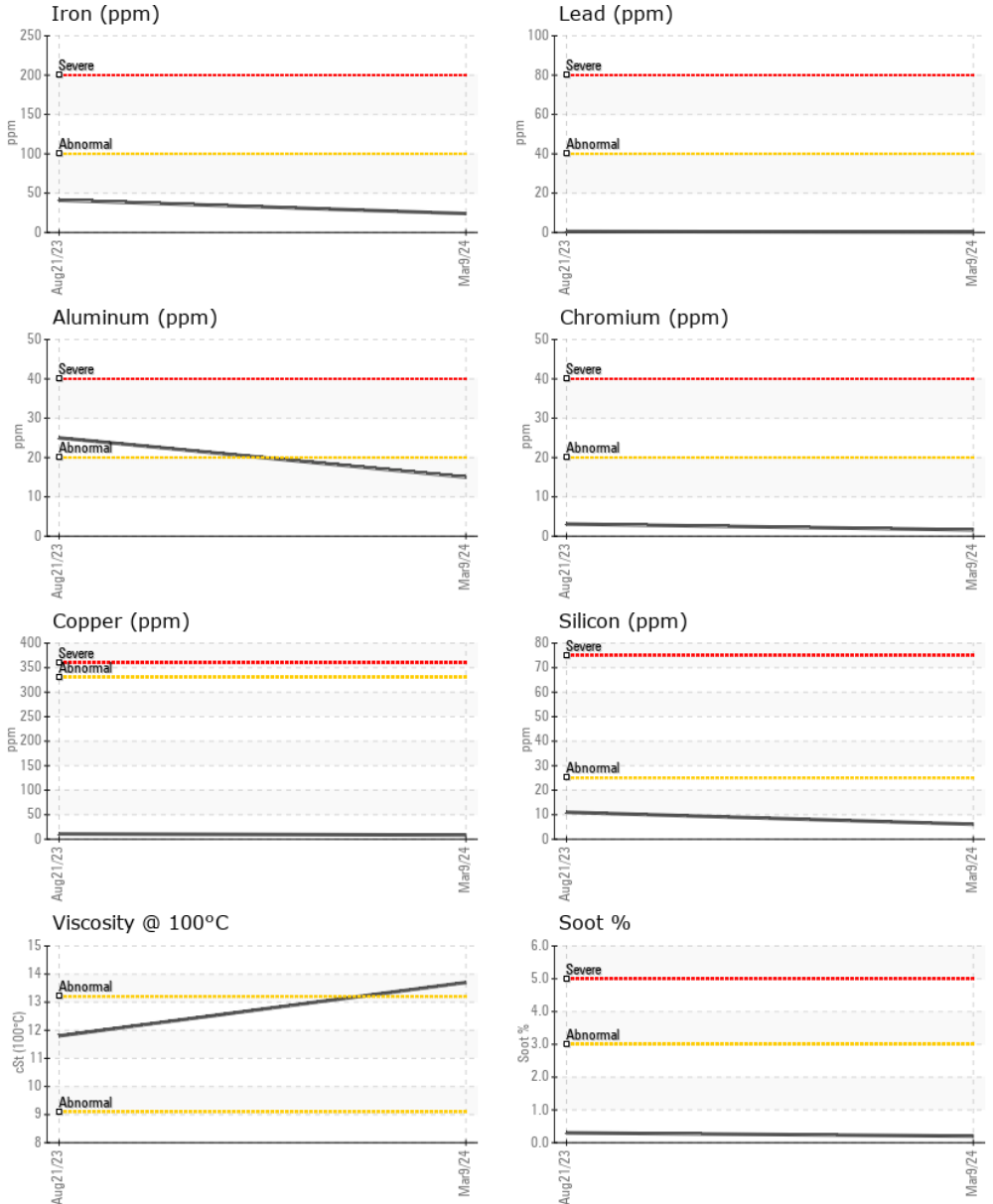
VISUAL

	method	limit/base	current	history1	history2
Emulsified Water	scalar	Visual*	>0.2	NEG	NEG
Free Water	scalar	Visual*	NEG	NEG	---

FLUID PROPERTIES

	method	limit/base	current	history1	history2
Visc @ 100°C	cSt	ASTM D7279(m)	13.7	▲ 11.8	---

GRAPHS



Laboratory : WearCheck - C8-1175 Appleby Line, Burlington, ON L7L 5H9
Sample No. : WC0899445
Lab Number : 02621034
Unique Number : 5746153
Test Package : MOBCE
Received : 11 Mar 2024
Tested : 11 Mar 2024
Diagnosed : 11 Mar 2024 - Kevin Marson

RONI/IRON SHORE EXCAVATING LTD.
 100 MACINTOSH BLVD
 VAUGHAN, ON
 CA L4K 4P3
 Contact: Service Team
 service.team@roni.ca

To discuss this sample report, contact Customer Service at 1-800-268-2131.
 Test denoted (*) outside scope of accreditation, (m) method modified, (e) tested at external lab.
 Validity of results and interpretation are based on the sample and information as supplied.

T:
F: