



# OIL ANALYSIS REPORT

Sample Rating Trend

WEAR PARTICLES



Machine Id  
**MYCOM SKID C (S/N 16150296)**

Component  
**Screw Compressor**

Fluid  
**MOBIL GARGOYLE ARCTIC 300 (30 GAL)**

## DIAGNOSIS

### Recommendation

We recommend that you drain the oil from the component if this has not already been done. We recommend an early resample to monitor this condition.

### Wear

Wear particle analysis indicates that the ferrous rubbing particles are abnormal.

### Contaminants

The water content is negligible. There is no indication of any contamination in the oil.

### Oil Condition

The oil viscosity is higher than typical. The AN level is acceptable for this fluid. The oil is no longer serviceable as a result of the abnormal and/or severe wear.

## SAMPLE INFORMATION

method	limit/base	current	history1	history2
Sample Number	Client Info	<b>WC0805012</b>	---	---
Sample Date	Client Info	<b>25 Feb 2024</b>	---	---
Machine Age	hrs Client Info	<b>62300</b>	---	---
Oil Age	hrs Client Info	<b>10000</b>	---	---
Oil Changed	Client Info	<b>Not Chngd</b>	---	---
Sample Status		<b>ABNORMAL</b>	---	---

## WEAR METALS

method	limit/base	current	history1	history2
PQ	ASTM D8184*	<b>0</b>	---	---
Iron	ppm ASTM D5185(m) >60	<b>27</b>	---	---
Chromium	ppm ASTM D5185(m) >4	<b>0</b>	---	---
Nickel	ppm ASTM D5185(m)	<b>&lt;1</b>	---	---
Titanium	ppm ASTM D5185(m)	<b>0</b>	---	---
Silver	ppm ASTM D5185(m)	<b>0</b>	---	---
Aluminum	ppm ASTM D5185(m) >5	<b>&lt;1</b>	---	---
Lead	ppm ASTM D5185(m) >10	<b>0</b>	---	---
Copper	ppm ASTM D5185(m) >30	<b>&lt;1</b>	---	---
Tin	ppm ASTM D5185(m) >15	<b>0</b>	---	---
Antimony	ppm ASTM D5185(m)	<b>0</b>	---	---
Vanadium	ppm ASTM D5185(m)	<b>0</b>	---	---
Beryllium	ppm ASTM D5185(m)	<b>0</b>	---	---
Cadmium	ppm ASTM D5185(m)	<b>0</b>	---	---

## ADDITIVES

method	limit/base	current	history1	history2
Boron	ppm ASTM D5185(m)	<b>0</b>	---	---
Barium	ppm ASTM D5185(m)	<b>0</b>	---	---
Molybdenum	ppm ASTM D5185(m)	<b>0</b>	---	---
Manganese	ppm ASTM D5185(m)	<b>0</b>	---	---
Magnesium	ppm ASTM D5185(m)	<b>0</b>	---	---
Calcium	ppm ASTM D5185(m)	<b>&lt;1</b>	---	---
Phosphorus	ppm ASTM D5185(m)	<b>0</b>	---	---
Zinc	ppm ASTM D5185(m)	<b>13</b>	---	---
Sulfur	ppm ASTM D5185(m)	<b>345</b>	---	---
Lithium	ppm ASTM D5185(m)	<b>&lt;1</b>	---	---

## CONTAMINANTS

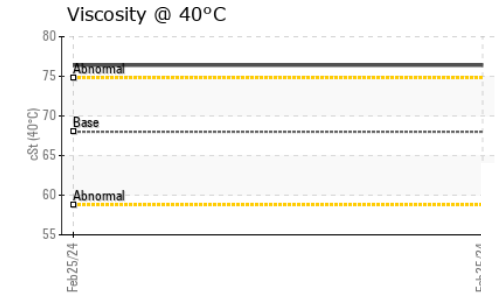
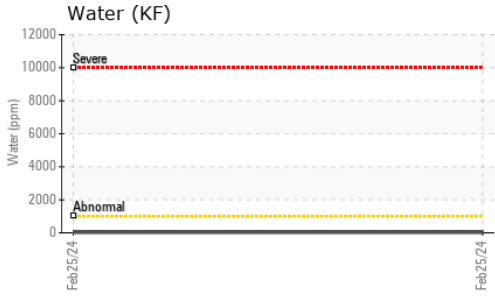
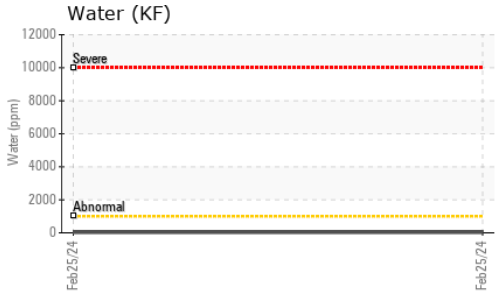
method	limit/base	current	history1	history2
Silicon	ppm ASTM D5185(m) >50	<b>&lt;1</b>	---	---
Sodium	ppm ASTM D5185(m)	<b>&lt;1</b>	---	---
Potassium	ppm ASTM D5185(m) >20	<b>&lt;1</b>	---	---
Water	% ASTM D6304* >0.1	<b>0.003</b>	---	---
ppm Water	ppm ASTM D6304* >1000	<b>29</b>	---	---

## FLUID DEGRADATION

method	limit/base	current	history1	history2
Acid Number (AN)	mg KOH/g ASTM D974* 0.01	<b>0.04</b>	---	---



# OIL ANALYSIS REPORT



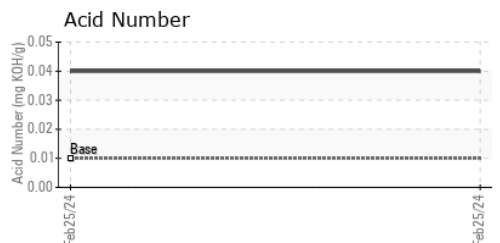
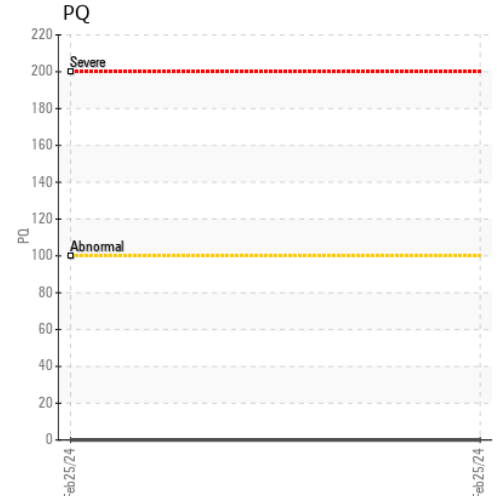
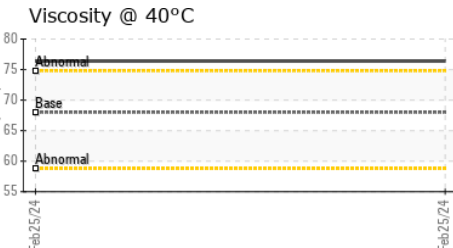
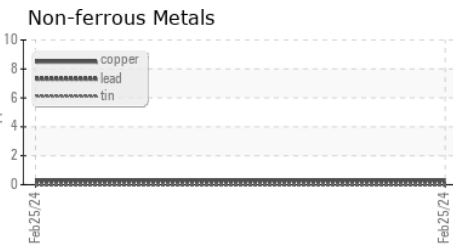
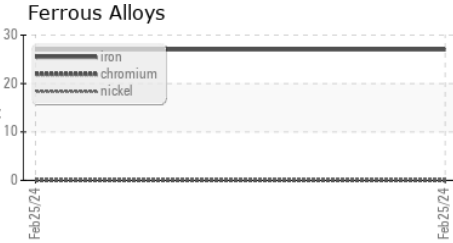
VISUAL	method	limit/base	current	history1	history2
White Metal	scalar	Visual*	NONE	NONE	---
Yellow Metal	scalar	Visual*	NONE	NONE	---
Precipitate	scalar	Visual*	NONE	NONE	---
Silt	scalar	Visual*	NONE	NONE	---
Debris	scalar	Visual*	NONE	NONE	---
Sand/Dirt	scalar	Visual*	NONE	NONE	---
Appearance	scalar	Visual*	NORML	NORML	---
Odor	scalar	Visual*	NORML	NORML	---
Emulsified Water	scalar	Visual*	>0.1	NEG	---
Free Water	scalar	Visual*		NEG	---

FLUID PROPERTIES	method	limit/base	current	history1	history2
Visc @ 40°C	cSt	ASTM D7279(m)	68	76.4	---

SAMPLE IMAGES	method	limit/base	current	history1	history2
---------------	--------	------------	---------	----------	----------

Color		no image	no image
Bottom		no image	no image

## GRAPHS



**Laboratory** : WearCheck - C8-1175 Appleby Line, Burlington, ON L7L 5H9  
**Sample No.** : WC0805012 **Received** : 11 Mar 2024  
**Lab Number** : 02621126 **Tested** : 12 Mar 2024  
**Unique Number** : 5746245 **Diagnosed** : 12 Mar 2024 - Kevin Marson  
**Test Package** : IND 3 ( Additional Tests: KF )

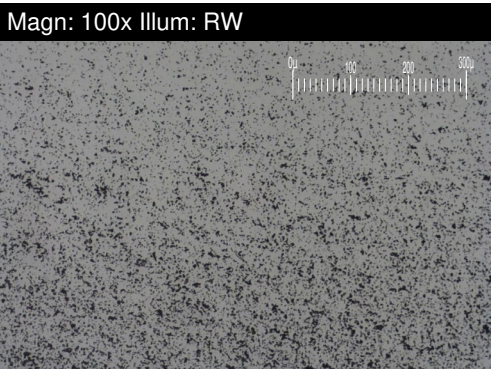
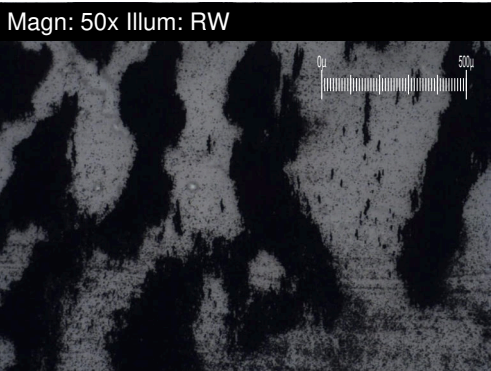
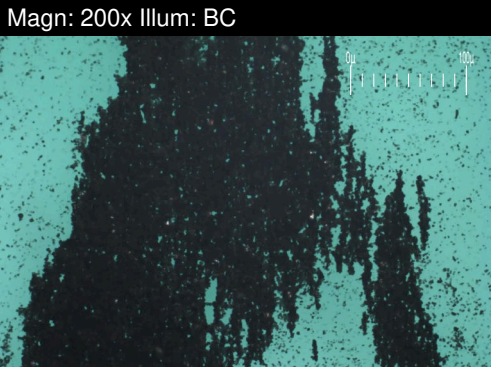
To discuss this sample report, contact Customer Service at 1-800-268-2131.  
 Test denoted (\*) outside scope of accreditation, (m) method modified, (e) tested at external lab.  
 Validity of results and interpretation are based on the sample and information as supplied.

**Nutrien Bloom**  
 Po Box 1349 Stn Main  
 Portage La Prairie, MB  
 CA R1N 3L5  
 Contact: Robert Stobie  
 robert.stobie@nutrien.com  
 T: (204)252-2711  
 F: (204)239-6294



# FERROGRAPHY REPORT

Machine Id  
**MYCOM SKID C (S/N 16150296)**  
 Component  
**Screw Compressor**  
 Fluid  
**MOBIL GARGOYLE ARCTIC 300 (30 GAL)**

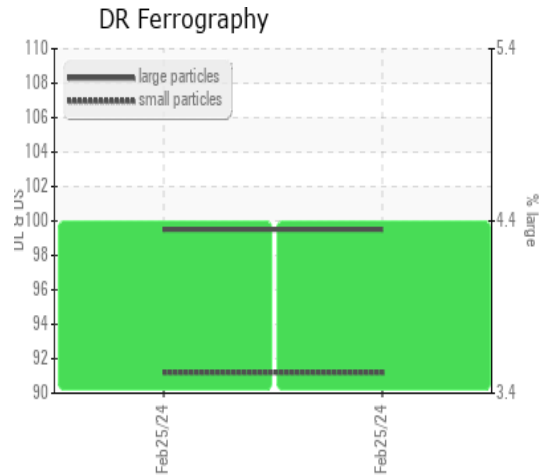


DR-FERROGRAPHY		method	limit/base	current	history1	history2
Large Particles		DR-Ferr*		<b>99.5</b>	---	---
Small Particles		DR-Ferr*		<b>91.2</b>	---	---
Total Particles		DR-Ferr*	>---	<b>190.7</b>	---	---
Large Particles Percentage	%	DR-Ferr*		<b>4.4</b>	---	---
Severity Index		DR-Ferr*		<b>826</b>	---	---

FERROGRAPHY		method	limit/base	current	history1	history2
Ferrous Rubbing	Scale 0-10	ASTM D7684*		▲ <span style="background-color: #ffcc00; padding: 2px;">5</span>		
Ferrous Sliding	Scale 0-10	ASTM D7684*				
Ferrous Cutting	Scale 0-10	ASTM D7684*				
Ferrous Rolling	Scale 0-10	ASTM D7684*		■ <b>2</b>		
Ferrous Break-in	Scale 0-10	ASTM D7684*				
Ferrous Spheres	Scale 0-10	ASTM D7684*				
Ferrous Black Oxides	Scale 0-10	ASTM D7684*		■ <b>1</b>		
Ferrous Red Oxides	Scale 0-10	ASTM D7684*				
Ferrous Corrosive	Scale 0-10	ASTM D7684*		■ <b>2</b>		
Ferrous Other	Scale 0-10	ASTM D7684*				
Nonferrous Rubbing	Scale 0-10	ASTM D7684*				
Nonferrous Sliding	Scale 0-10	ASTM D7684*				
Nonferrous Cutting	Scale 0-10	ASTM D7684*				
Nonferrous Rolling	Scale 0-10	ASTM D7684*				
Nonferrous Other	Scale 0-10	ASTM D7684*				
Carbonaceous Material	Scale 0-10	ASTM D7684*				
Lubricant Degradation	Scale 0-10	ASTM D7684*		■ <b>3</b>		
Sand/Dirt	Scale 0-10	ASTM D7684*		■ <b>1</b>		
Fibres	Scale 0-10	ASTM D7684*				
Spheres	Scale 0-10	ASTM D7684*				
Other	Scale 0-10	ASTM D7684*		■ <b>2</b>		

### WEAR

Wear particle analysis indicates that the ferrous rubbing particles are abnormal.



*This page left intentionally blank*