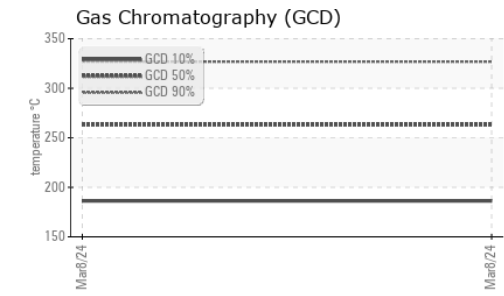
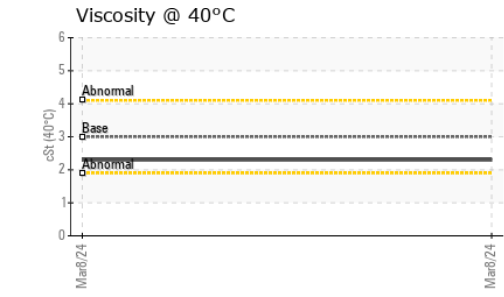
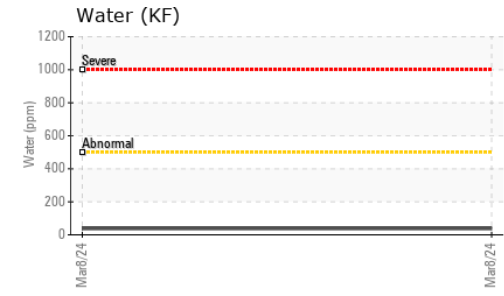
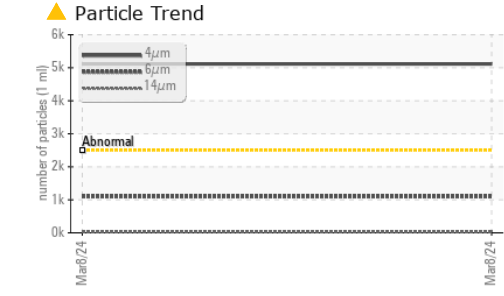
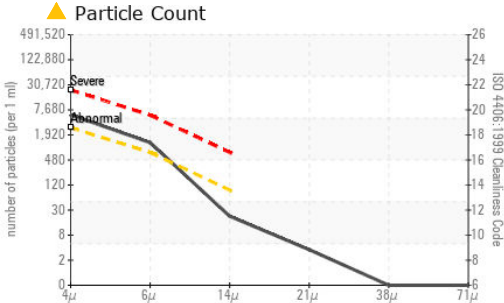




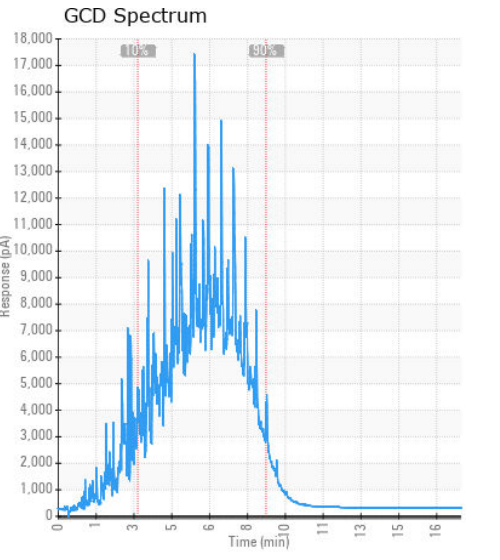
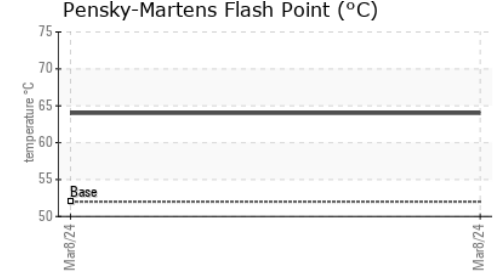
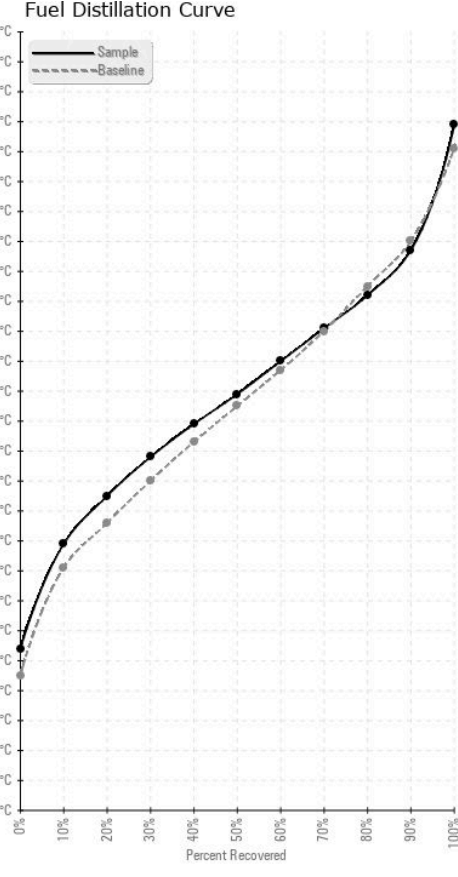
FUEL REPORT



HEAVY METALS	method	limit/base	current	history1	history2	
Aluminum	ppm	ASTM D5185(m)	<0.1	0	---	---
Nickel	ppm	ASTM D5185(m)	<0.1	0	---	---
Lead	ppm	ASTM D5185(m)	<0.1	0	---	---
Vanadium	ppm	ASTM D5185(m)	<0.1	0	---	---
Iron	ppm	ASTM D5185(m)	<0.1	0	---	---
Calcium	ppm	ASTM D5185(m)	<0.1	0	---	---
Magnesium	ppm	ASTM D5185(m)	<0.1	0	---	---
Phosphorus	ppm	ASTM D5185(m)	<0.1	0	---	---
Zinc	ppm	ASTM D5185(m)	<0.1	0	---	---

SAMPLE IMAGES	method	limit/base	current	history1	history2
Color				no image	no image
Bottom				no image	no image

GRAPHS



Laboratory : WearCheck - C8-1175 Appleby Line, Burlington, ON L7L 5H9
Sample No. : WC0821960
Lab Number : 02621267
Unique Number : 5746386
Test Package : FUEL (Additional Tests: CC Flash, GC-PercFuel, PrtCount)

Green Infrastructure and Partners Inc (GIPI) - 286 - Shoring & Foundations
 151 Ram Forest Rd,
 Stouffville, ON
 CA L4A 2G8
 Contact: Shannon Abbott
 sabbott@gipi.com
 T: (905)750-5900
 F:

Received : 11 Mar 2024
 Tested : 18 Mar 2024
 Diagnosed : 18 Mar 2024 - Kevin Marson
 To discuss this sample report, contact Customer Service at 1-800-268-2131.
 Test denoted (*) outside scope of accreditation, (m) method modified, (e) tested at external lab.
 Validity of results and interpretation are based on the sample and information as supplied.