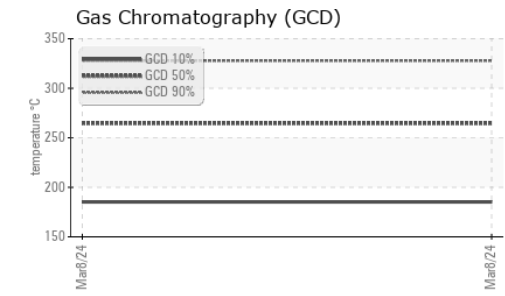
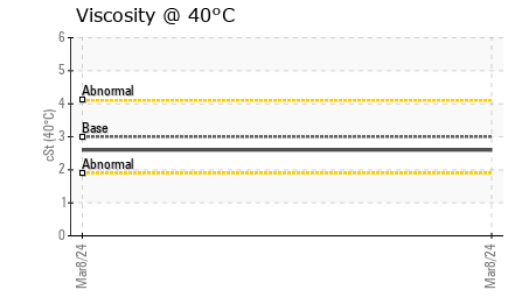
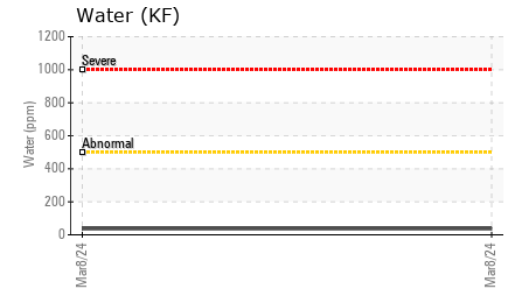
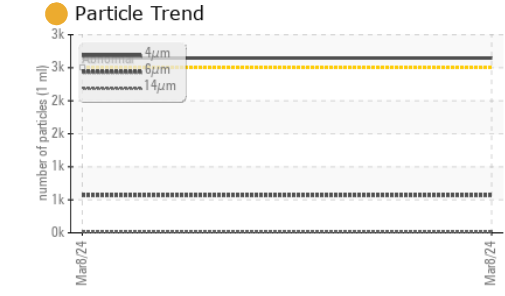
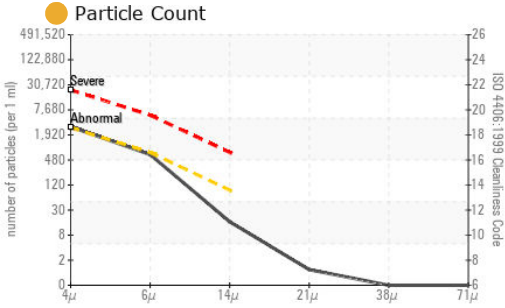






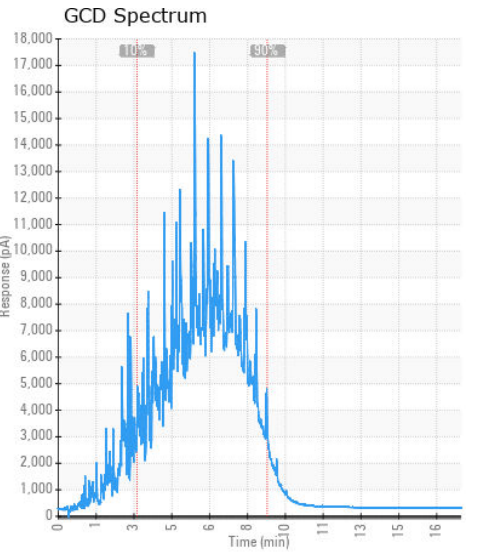
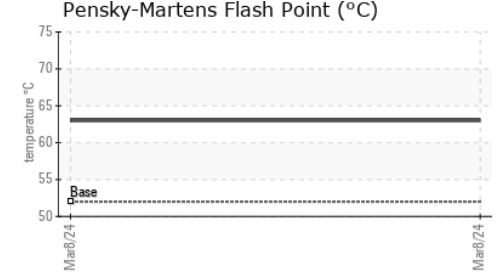
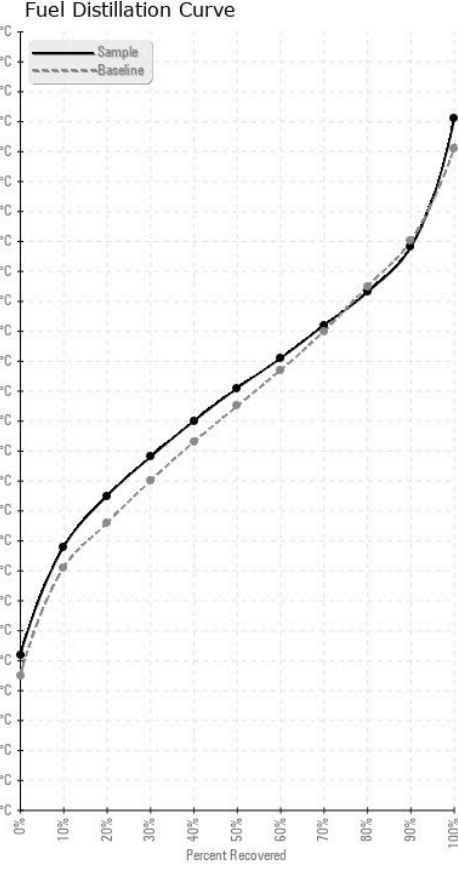
# FUEL REPORT



HEAVY METALS	method	limit/base	current	history1	history2	
Aluminum	ppm	ASTM D5185(m)	<0.1	0	---	---
Nickel	ppm	ASTM D5185(m)	<0.1	0	---	---
Lead	ppm	ASTM D5185(m)	<0.1	0	---	---
Vanadium	ppm	ASTM D5185(m)	<0.1	0	---	---
Iron	ppm	ASTM D5185(m)	<0.1	0	---	---
Calcium	ppm	ASTM D5185(m)	<0.1	0	---	---
Magnesium	ppm	ASTM D5185(m)	<0.1	0	---	---
Phosphorus	ppm	ASTM D5185(m)	<0.1	0	---	---
Zinc	ppm	ASTM D5185(m)	<0.1	0	---	---

SAMPLE IMAGES	method	limit/base	current	history1	history2
Color				no image	no image
Bottom				no image	no image

## GRAPHS



**Laboratory** : WearCheck - C8-1175 Appleby Line, Burlington, ON L7L 5H9  
**Sample No.** : WC0821959 **Received** : 11 Mar 2024  
**Lab Number** : 02621268 **Tested** : 18 Mar 2024  
**Unique Number** : 5746387 **Diagnosed** : 18 Mar 2024 - Kevin Marson  
**Test Package** : FUEL ( Additional Tests: CC Flash, GC-PercFuel, PrtCount )

Green Infrastructure and Partners Inc (GIPI) - 286 - Shoring & Foundations  
 151 Ram Forest Rd,  
 Stouffville, ON  
 CA L4A 2G8  
 Contact: Shannon Abbott  
 sabbott@gipi.com  
 T: (905)750-5900  
 F:

To discuss this sample report, contact Customer Service at 1-800-268-2131.  
 Test denoted (\*) outside scope of accreditation, (m) method modified, (e) tested at external lab.  
 Validity of results and interpretation are based on the sample and information as supplied.