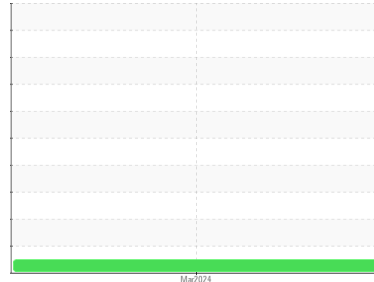




# GREASE ANALYSIS

Sample Rating Trend

**NORMAL**



Machine Id  
**ID FAN #3 NDE BOTTOM**

Component  
**Bottom Grease**

Fluid  
**MOBIL MOBILITH SHC SERIES 100 (--- GAL)**

## DIAGNOSIS

### Recommendation

Resample at the next service interval to monitor.

### Wear

All component wear rates are normal. The ferrography results are normal indicating no abnormal wear in the system.

### Grease Condition

The condition of the grease is acceptable for the time in service.

### Contaminants

There is no indication of any contamination in the grease.

## SAMPLE INFORMATION

	method	limit/base	current	history1	history2
Sample Number	Client Info		<b>PP</b>	---	---
Sample Date	Client Info		<b>07 Mar 2024</b>	---	---
Machine Age	yrs	Client Info	<b>2</b>	---	---
Grease Age	yrs	Client Info	<b>0</b>	---	---
Grease Serviced	Client Info		<b>N/A</b>	---	---
Sample Status			<b>NORMAL</b>	---	---

## WEAR METALS

	method	limit/base	current	history1	history2
PQ	ASTM D8184*	>200	<b>37</b>	---	---
Iron	ppm	ASTM D5185(m)	>250	<b>8</b>	---
Chromium	ppm	ASTM D5185(m)	>10	<b>0</b>	---
Nickel	ppm	ASTM D5185(m)	>5	<b>&lt;1</b>	---
Cadmium	ppm	ASTM D5185(m)		<b>0</b>	---
Titanium	ppm	ASTM D5185(m)		<b>0</b>	---
Vanadium	ppm	ASTM D5185(m)		<b>0</b>	---
Lead	ppm	ASTM D5185(m)	>25	<b>&lt;1</b>	---
Copper	ppm	ASTM D5185(m)	>75	<b>&lt;1</b>	---
Tin	ppm	ASTM D5185(m)	>5	<b>0</b>	---
Silver	ppm	ASTM D5185(m)	>5	<b>0</b>	---

## ADDITIVES

	method	limit/base	current	history1	history2
Boron	ppm	ASTM D5185(m)	0	<b>0</b>	---
Magnesium	ppm	ASTM D5185(m)	0	<b>&lt;1</b>	---
Manganese	ppm	ASTM D5185(m)	0	<b>&lt;1</b>	---
Molybdenum	ppm	ASTM D5185(m)	0	<b>0</b>	---
Phosphorus	ppm	ASTM D5185(m)	200	<b>151</b>	---
Zinc	ppm	ASTM D5185(m)	250	<b>212</b>	---
Antimony	ppm	ASTM D5185(m)	0	<b>0</b>	---

## THICKENER/SOAP

	method	limit/base	current	history1	history2
Aluminum	ppm	ASTM D5185(m)	0	<b>&lt;1</b>	---
Barium	ppm	ASTM D5185(m)	0	<b>0</b>	---
Calcium	ppm	ASTM D5185(m)	0	<b>2</b>	---
Sodium	ppm	ASTM D5185(m)	2	<b>2</b>	---
Lithium	ppm	ASTM D5185(m)	400	<b>397</b>	---
Sulfur	ppm	ASTM D5185(m)	750	<b>631</b>	---

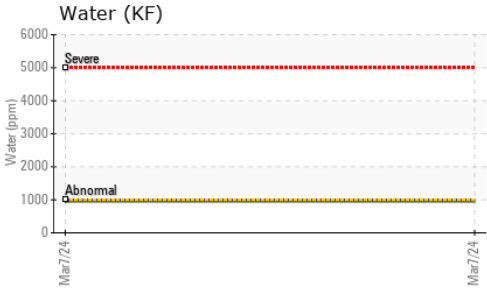
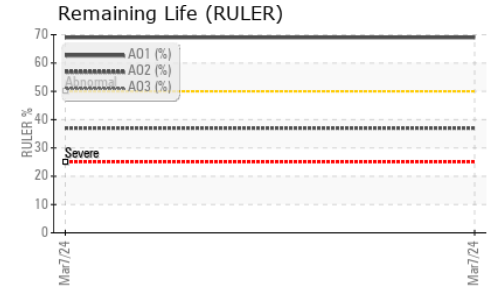
## CONTAMINANTS

	method	limit/base	current	history1	history2
Silicon	ppm	ASTM D5185(m)	>150	<b>&lt;1</b>	---
Potassium	ppm	ASTM D5185(m)		<b>4</b>	---
Water	%	ASTM D6304*	>0.1	<b>0.096</b>	---
ppm Water	ppm	ASTM D6304*	>1000	<b>968</b>	---

## GREASE CONDITION

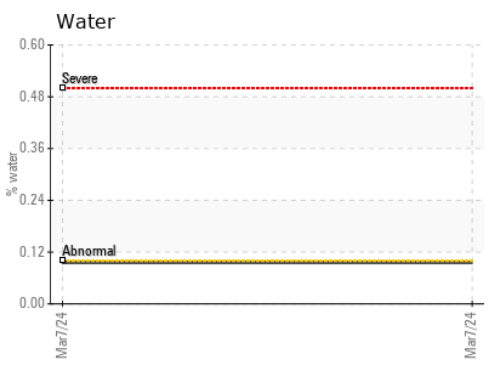
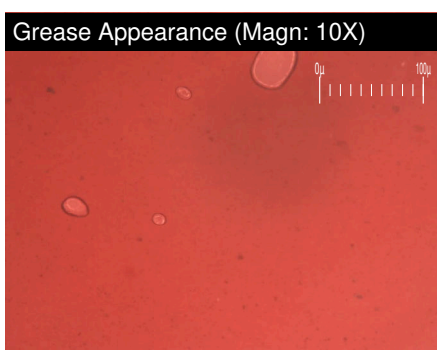
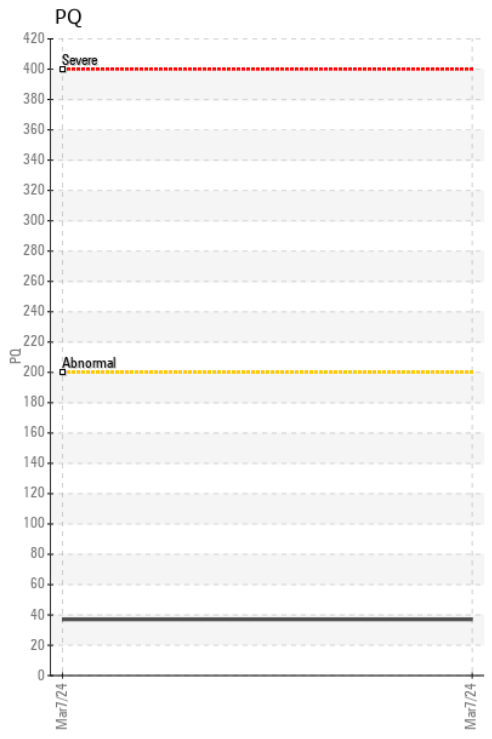
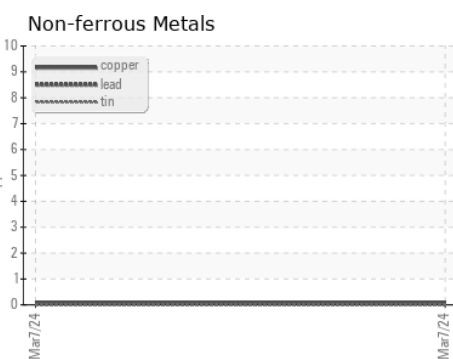
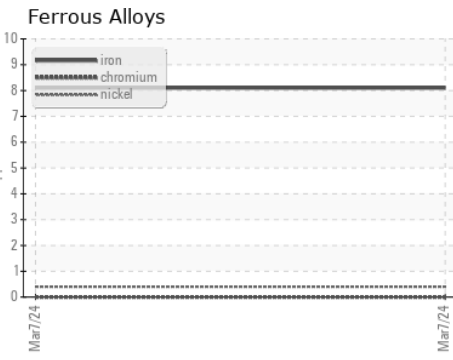
	method	limit/base	current	history1	history2
Grease Color	Visual*	red	<b>Red</b>	---	---
Texture	In-house*		<b>Short fiber</b>	---	---
NLGI Consistency	NLGI Scale	SKF Method*	2	<b>2-3</b>	---
Oil Separation (Bleed)	%	SKF Method*	>+/-25%	<b>-11.8</b>	---
Anti-Oxidant 1	%	ASTM D6971*	<25%	<b>69</b>	---
Anti-Oxidant 2	%	ASTM D6971*	<25%	<b>37</b>	---

# GREASE ANALYSIS



SAMPLE IMAGES	method	limit/base	current	history1	history2
Color				no image	no image
Bottom				no image	no image
PrtFilter				no image	no image

## GRAPHS



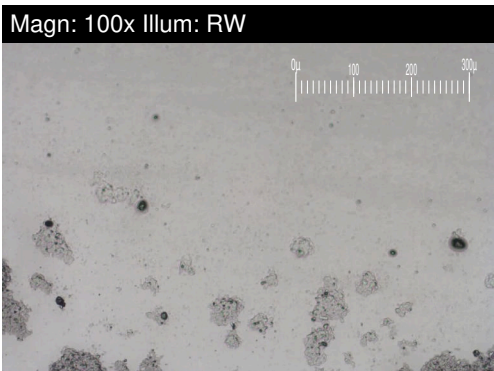
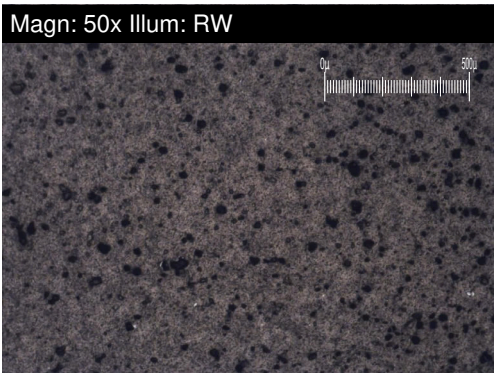
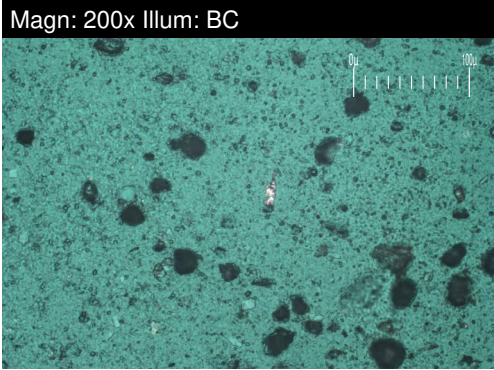
**Laboratory** : WearCheck - C8-1175 Appleby Line, Burlington, ON L7L 5H9  
**Sample No.** : PP **Received** : 12 Mar 2024  
**Lab Number** : **02621644** **Tested** : 25 Mar 2024  
**Unique Number** : 5746763 **Diagnosed** : 25 Mar 2024 - Bill Quesnel  
**Test Package** : GRS 3 ( Additional Tests: BottomAnalysis )

**DUFFIN CREEK (YORK-DURHAM) WPCP**  
 901 MCKAY ROAD  
 PICKERING, ON  
 CA L1W 3A3  
 Contact: Al Roffey  
 AL.ROFFEY@REGION.DURHAM.ON.CA  
 T: (905)683-9109  
 F: (905)686-3956

To discuss this sample report, contact Customer Service at 1-800-268-2131.  
 Test denoted (\*) outside scope of accreditation, (m) method modified, (e) tested at external lab.  
 Validity of results and interpretation are based on the sample and information as supplied.

# FERROGRAPHY REPORT

Machine Id  
**ID FAN #3 NDE BOTTOM**  
 Component  
**Bottom Grease**  
 Fluid  
**MOBIL MOBILITH SHC SERIES 100 (--- GAL)**



FERROGRAPHY	method	limit/base	current	history1	history2
Ferrous Rubbing	Scale 0-10 ASTM D7684*		2		
Ferrous Sliding	Scale 0-10 ASTM D7684*				
Ferrous Cutting	Scale 0-10 ASTM D7684*				
Ferrous Rolling	Scale 0-10 ASTM D7684*		1		
Ferrous Break-in	Scale 0-10 ASTM D7684*				
Ferrous Spheres	Scale 0-10 ASTM D7684*				
Ferrous Black Oxides	Scale 0-10 ASTM D7684*				
Ferrous Red Oxides	Scale 0-10 ASTM D7684*				
Ferrous Corrosive	Scale 0-10 ASTM D7684*				
Ferrous Other	Scale 0-10 ASTM D7684*				
Nonferrous Rubbing	Scale 0-10 ASTM D7684*		2		
Nonferrous Sliding	Scale 0-10 ASTM D7684*				
Nonferrous Cutting	Scale 0-10 ASTM D7684*				
Nonferrous Rolling	Scale 0-10 ASTM D7684*		2		
Nonferrous Other	Scale 0-10 ASTM D7684*				
Carbonaceous Material	Scale 0-10 ASTM D7684*				
Lubricant Degradation	Scale 0-10 ASTM D7684*				
Sand/Dirt	Scale 0-10 ASTM D7684*		2		
Fibres	Scale 0-10 ASTM D7684*				
Spheres	Scale 0-10 ASTM D7684*				
Other	Scale 0-10 ASTM D7684*		3		

### WEAR

All component wear rates are normal.  
 The ferrography results are normal indicating no abnormal wear in the system.

*This page left intentionally blank*