

COOLANT REPORT

Sample Rating Trend

NORMAL



Machine Id
GD11250C

Component
Coolant
Fluid
HYBRID (HOAT) COOLANT (--- GAL)

DIAGNOSIS

Recommendation

Le fluide peut encore servir. Échantillonner de nouveau l'équipement au prochain intervalle de vidange afin d'en surveiller la condition.

Corrosion

Les concentrations de tous les métaux sont normales indiquant qu'il n'y a pas de corrosion dans le système de refroidissement.

Contaminants

Il n'y a aucun indice de contamination dans l'agent de refroidissement.

Coolant Condition

Le niveau de pH de ce fluide est dans les limites acceptables. La réserve d'alcalinité de ce fluide est acceptable.

SAMPLE INFORMATION

	method	limit/base	current	history1	history2
Sample Number	Client Info		WA0020931	---	---
Sample Date	Client Info		11 Mar 2024	---	---
Machine Age	hrs	Client Info	0	---	---
Oil Age	hrs	Client Info	0	---	---
Oil Changed	Client Info		N/A	---	---
Sample Status			NORMAL	---	---

PHYSICAL TEST RESULTS

	method	limit/base	current	history1	history2
Glycol Type	FT-IR		UNK	---	---
Specific Gravity	ASTM D1298*		1.068	---	---
pH	Scale 0-14	ASTM D1287*	7.88	---	---
Nitrites	ppm	Alcan Test Kit*	280	---	---
Reserve Alkalinity	Scale 0-20	ASTM D1121*	2.4	---	---
Percentage Glycol	%	ASTM D3321*	50.5	---	---
Freezing Point	°C	ASTM D3321*	-37	---	---
Carboxylate			---	---	---

CORROSION INHIBITORS

	method	limit/base	current	history1	history2
Silicon	ppm	ASTM D5185(m)	114	---	---
Phosphorus	ppm	ASTM D5185(m)	51	---	---
Boron	ppm	ASTM D5185(m)	78	---	---
Molybdenum	ppm	ASTM D5185(m)	13	---	---

CORROSION

	method	limit/base	current	history1	history2
Iron	ppm	ASTM D5185(m)	>15	0	---
Aluminum	ppm	ASTM D5185(m)	>10	0	---
Copper	ppm	ASTM D5185(m)	>10	0	---
Lead	ppm	ASTM D5185(m)	>10	0	---
Tin	ppm	ASTM D5185(m)	>10	0	---
Silver	ppm	ASTM D5185(m)	>10	<1	---
Zinc	ppm	ASTM D5185(m)		1	---

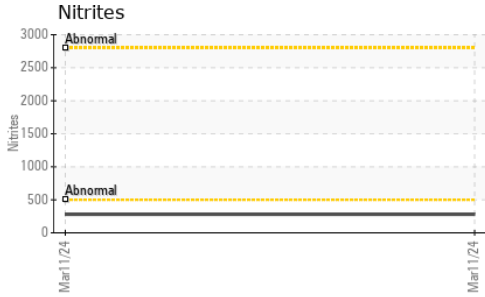
CARRIER SALTS

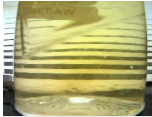

	method	limit/base	current	history1	history2
Sodium	ppm	ASTM D5185(m)		2134	---
Potassium	ppm	ASTM D5185(m)		2726	---

SCALE POTENTIAL

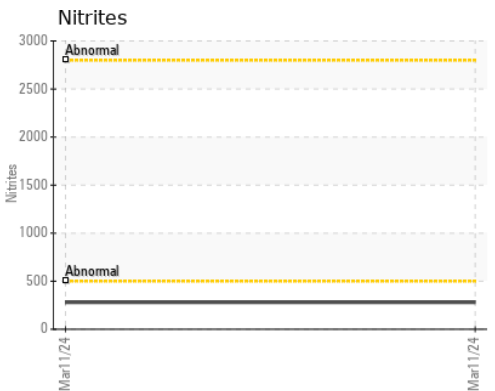
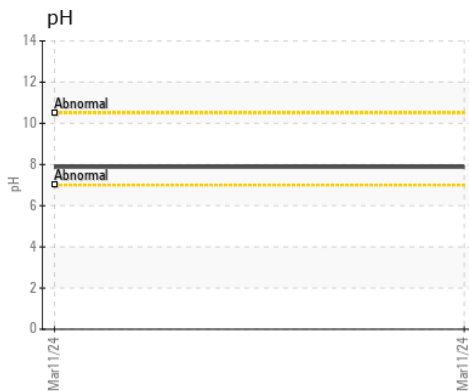
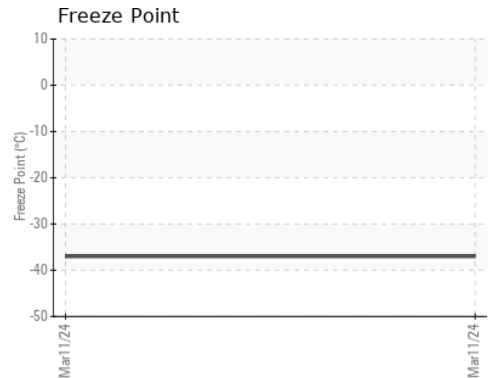
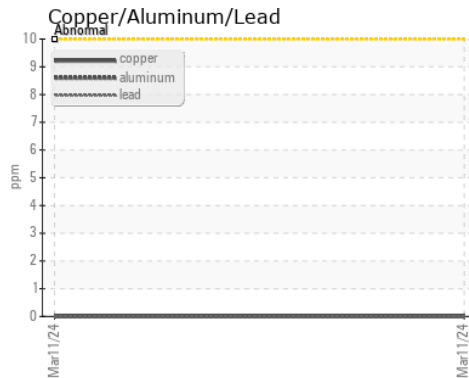
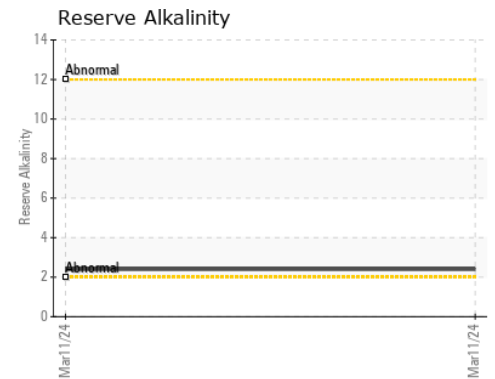
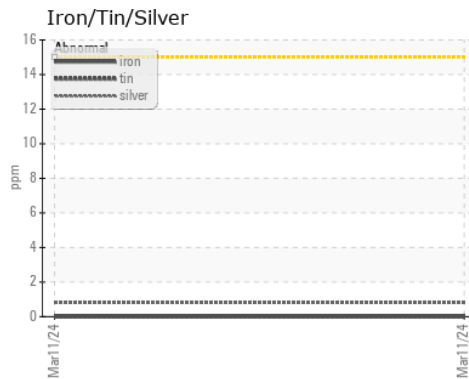
	method	limit/base	current	history1	history2
Calcium	ppm	ASTM D5185(m)	>100	8	---
Magnesium	ppm	ASTM D5185(m)	>40	2	---
Hardness	mg/L CaCO3	In-house*	<75	27	---

COOLANT REPORT



VISUAL	method	limit/base	current	history1	history2
Coolant Color	Visual*		Yellow	---	---
Coolant Appearance	Visual*	Clear	Clear	---	---
Color				no image	no image
Bottom				no image	no image

GRAPHS



Laboratory : WearCheck - C8-1175 Appleby Line, Burlington, ON L7L 5H9
Sample No. : WA0020931
Lab Number : 02621851
Unique Number : 5746970
Test Package : COOL (Additional Tests: GlycolType)

Generatrice Drummond
 243 rue des ARTISANS
 SAINT-GERMAIN-DE-GRANTHAM, QC
 CA J0C 1K0
 Contact: Valerie Poirier
 poiirivalerie@generatricedrummond.com

To discuss this sample report, contact Customer Service at 1-800-268-2131.
 Test denoted (*) outside scope of accreditation, (m) method modified, (e) tested at external lab.
 Validity of results and interpretation are based on the sample and information as supplied.

T: (819)398-6811
 F: (819)398-7022