

FUEL REPORT

Sample Rating Trend



ISO



Area
[267922]
Machine Id
GDM1775
Component
Diesel Fuel
Fluid
No.1 DIESEL FUEL (ULTRALOW SULPHUR) (--- GAL)

DIAGNOSIS

Recommendation

Les tests de laboratoire indiquent que ce carburant peut être utilisé et qu'il répond à toutes les exigences. Nous vous recommandons de remplacer le filtre et d'utiliser un système de filtrage hors-ligne afin d'améliorer la propreté du fluide. Nous vous recommandons de filtrer ce fluide avant de l'utiliser. Nous vous recommandons d'échantillonner de nouveau dès que possible afin de contrôler la situation.

Contaminants

Il y a une quantité modérée de matières particulaires (2 à 100 µm de taille) présente dans le carburant. La teneur en eau est négligeable. La propreté du système est supérieure à la limite acceptable pour votre objectif de propreté ISO 4406.

Fuel Condition

le carburant peut encore servir si la contamination peut être réduite à un niveau acceptable. Tous les essais en laboratoire indiquent que cet échantillon satisfait aux spécifications pour le carburant diesel à ultra-faible teneur de soufre No.1 (US EPA/CGSB-3.517-3 type A).

SAMPLE INFORMATION		method	limit/base	current	history1	history2
Sample Number	Client Info			WA0020934	---	---
Sample Date	Client Info			05 Mar 2024	---	---
Machine Age	hrs	Client Info		0	---	---
Sample Status				ABNORMAL	---	---

PHYSICAL PROPERTIES		method	limit/base	current	history1	history2
Specific Gravity		ASTM D1298*	0.825	0.814	---	---
Fuel Color	text	Visual Screen*	Clear	Pink	---	---
Visc @ 40°C	cSt	ASTM D7279(m)	1.8	1.6	---	---

SULFUR CONTENT		method	limit/base	current	history1	history2
Sulfur	ppm	ASTM D5185(m)	10	12	---	---

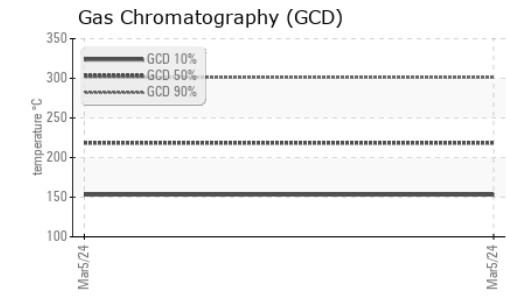
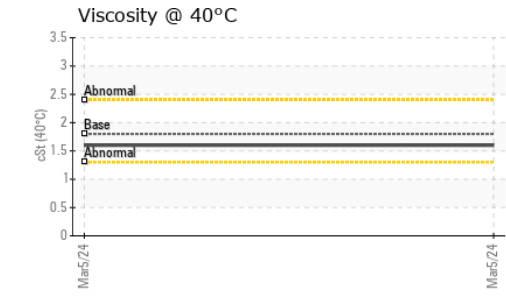
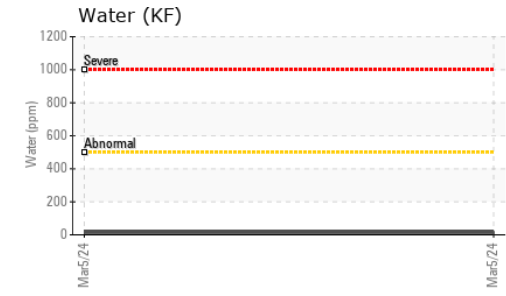
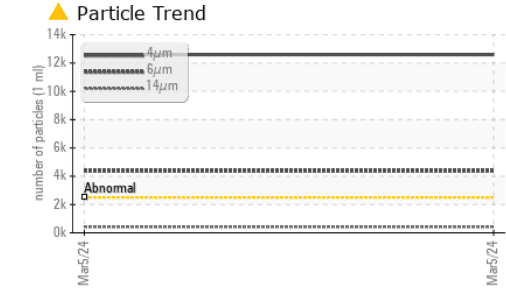
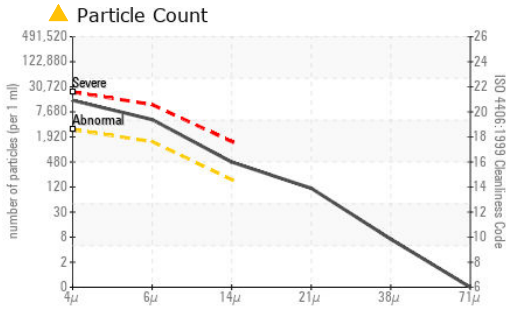
DISTILLATION		method	limit/base	current	history1	history2
Initial Boiling Point	°C	ASTM D2887*	159	153	---	---
5% Distillation Point	°C	ASTM D2887*		167	---	---
10% Distill Point	°C	ASTM D2887*	184	174	---	---
15% Distillation Point	°C	ASTM D2887*		179	---	---
20% Distill Point	°C	ASTM D2887*	196	185	---	---
30% Distill Point	°C	ASTM D2887*	205	195	---	---
40% Distill Point	°C	ASTM D2887*	216	206	---	---
50% Distill Point	°C	ASTM D2887*	227	218	---	---
60% Distill Point	°C	ASTM D2887*	238	230	---	---
70% Distill Point	°C	ASTM D2887*	251	243	---	---
80% Distill Point	°C	ASTM D2887*	264	260	---	---
85% Distillation Point	°C	ASTM D2887*		271	---	---
90% Distill Point	°C	ASTM D2887*	288	283	---	---
95% Distillation Point	°C	ASTM D2887*		303	---	---
Final Boiling Point	°C	ASTM D2887*	309	323	---	---

IGNITION QUALITY		method	limit/base	current	history1	history2
API Gravity		ASTM D1298*	40.1	42	---	---
Cetane Index		ASTM D4737*	<40.0	46	---	---

CONTAMINANTS		method	limit/base	current	history1	history2
Silicon	ppm	ASTM D5185(m)	<1.0	0	---	---
Sodium	ppm	ASTM D5185(m)	<0.1	<1	---	---
Potassium	ppm	ASTM D5185(m)	<0.1	0	---	---
Water	%	ASTM D6304*	<0.05	0.001	---	---
ppm Water	ppm	ASTM D6304*	<500	15	---	---

FLUID CLEANLINESS		method	limit/base	current	history1	history2
Particles >4µm		ASTM D7647	>2500	▲ 12594	---	---
Particles >6µm		ASTM D7647	>1300	▲ 4371	---	---
Particles >14µm		ASTM D7647	>160	▲ 420	---	---
Particles >21µm		ASTM D7647	>40	▲ 99	---	---
Particles >38µm		ASTM D7647	>10	6	---	---
Particles >71µm		ASTM D7647	>3	0	---	---
Oil Cleanliness		ISO 4406 (c)	>18/17/14	▲ 21/19/16	---	---

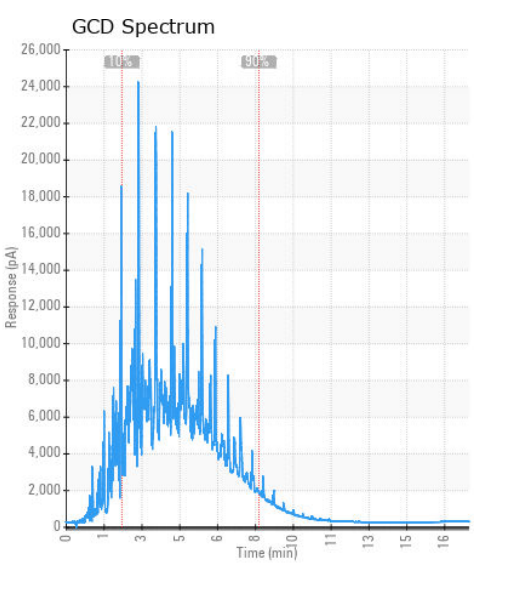
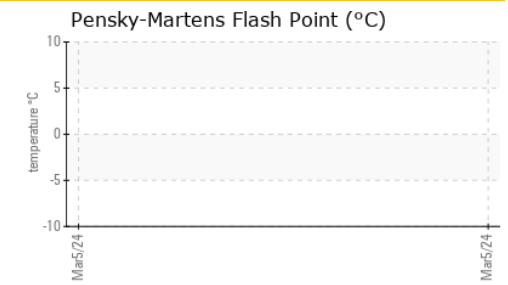
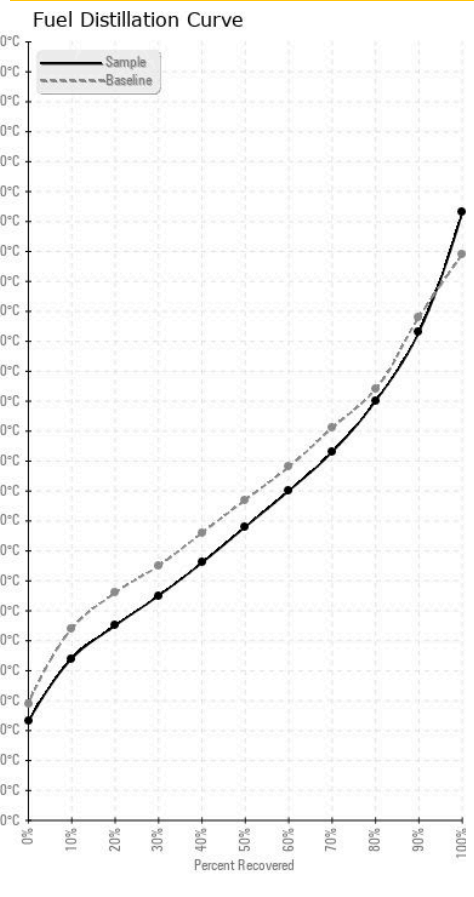
FUEL REPORT



HEAVY METALS	method	limit/base	current	history1	history2
Aluminum	ppm	ASTM D5185(m)	<0.1	0	---
Nickel	ppm	ASTM D5185(m)	<0.1	0	---
Lead	ppm	ASTM D5185(m)	<0.1	0	---
Vanadium	ppm	ASTM D5185(m)	<0.1	0	---
Iron	ppm	ASTM D5185(m)	<0.1	0	---
Calcium	ppm	ASTM D5185(m)	<0.1	0	---
Magnesium	ppm	ASTM D5185(m)	<0.1	0	---
Phosphorus	ppm	ASTM D5185(m)	<0.1	0	---
Zinc	ppm	ASTM D5185(m)	<0.1	<1	---

SAMPLE IMAGES	method	limit/base	current	history1	history2
Color				no image	no image
Bottom				no image	no image

GRAPHS



Laboratory : WearCheck - C8-1175 Appleby Line, Burlington, ON L7L 5H9
Sample No. : WA0020934
Lab Number : 02621854
Unique Number : 5746973
Test Package : FUEL (Additional Tests: CC Flash, GC-PercFuel, PrtCount)

Received : 13 Mar 2024
Tested : 20 Mar 2024
Diagnosed : 20 Mar 2024 - Kevin Marson

Generatrice Drummond
 243 rue des ARTISANS
 SAINT-GERMAIN-DE-GRANTHAM, QC
 CA J0C 1K0
 Contact: Valerie Poirier
 poiirivalerie@generatricedrummond.com
 T: (819)398-6811
 F: (819)398-7022

To discuss this sample report, contact Customer Service at 1-800-268-2131.
 Test denoted (*) outside scope of accreditation, (m) method modified, (e) tested at external lab.
 Validity of results and interpretation are based on the sample and information as supplied.