

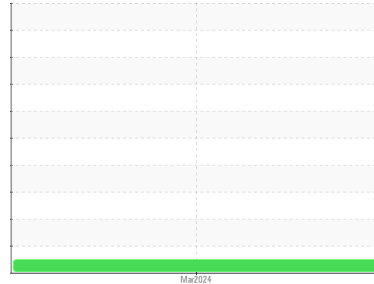


OIL ANALYSIS REPORT

Sample Rating Trend

DEGRADATION

Area
PLAEMP
 Machine Id
PHASE 2 HOT OIL
 Component
Heat Transfer Fluid
 Fluid
ESSO OIL 1156 (--- GAL)



DIAGNOSIS

▲ Recommendation

This is a baseline read-out on the submitted sample.

▲ Fluid Condition

Acid Number (AN) is severely high. Visc @ 40°C is severely high. COC Flash Point is abnormally high.

SAMPLE INFORMATION

	method	limit/base	current	history1	history2
Sample Number	Client Info		WC	---	---
Sample Date	Client Info		04 Mar 2024	---	---
Machine Age	yrs	Client Info	0	---	---
Oil Age	yrs	Client Info	42	---	---
Oil Changed	Client Info		N/A	---	---
Sample Status			SEVERE	---	---

WEAR METALS

	method	limit/base	current	history1	history2
Iron	ppm	ASTM D5185(m)	>200	<1	---
Chromium	ppm	ASTM D5185(m)	>21	0	---
Nickel	ppm	ASTM D5185(m)	>21	<1	---
Titanium	ppm	ASTM D5185(m)	>21	0	---
Silver	ppm	ASTM D5185(m)	>21	0	---
Aluminum	ppm	ASTM D5185(m)	>21	<1	---
Lead	ppm	ASTM D5185(m)	>21	0	---
Copper	ppm	ASTM D5185(m)	>21	0	---
Tin	ppm	ASTM D5185(m)	>21	1	---
Antimony	ppm	ASTM D5185(m)	>21	0	---
Vanadium	ppm	ASTM D5185(m)		0	---
Beryllium	ppm	ASTM D5185(m)		0	---
Cadmium	ppm	ASTM D5185(m)		0	---

ADDITIVES

	method	limit/base	current	history1	history2
Boron	ppm	ASTM D5185(m)		0	---
Barium	ppm	ASTM D5185(m)		0	---
Molybdenum	ppm	ASTM D5185(m)		0	---
Manganese	ppm	ASTM D5185(m)		0	---
Magnesium	ppm	ASTM D5185(m)		0	---
Calcium	ppm	ASTM D5185(m)		0	---
Phosphorus	ppm	ASTM D5185(m)		0	---
Zinc	ppm	ASTM D5185(m)		<1	---
Sulfur	ppm	ASTM D5185(m)	1000	3429	---
Lithium	ppm	ASTM D5185(m)		<1	---

CONTAMINANTS

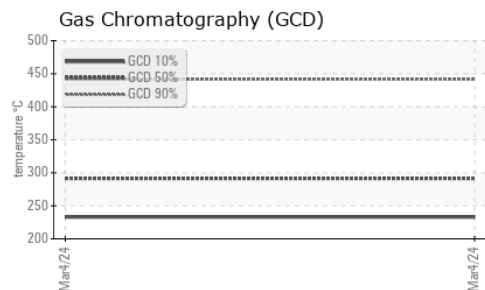
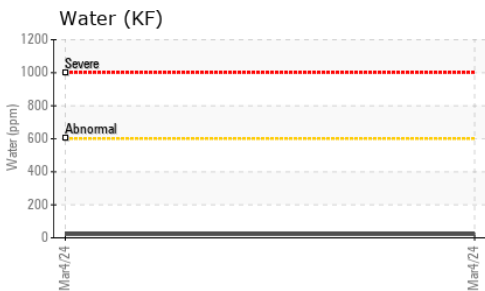
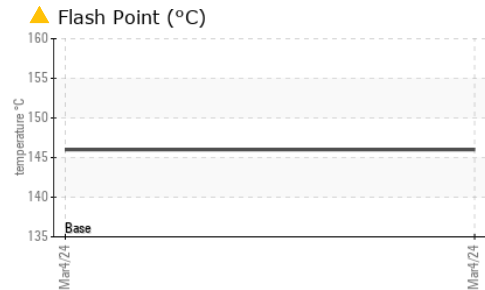
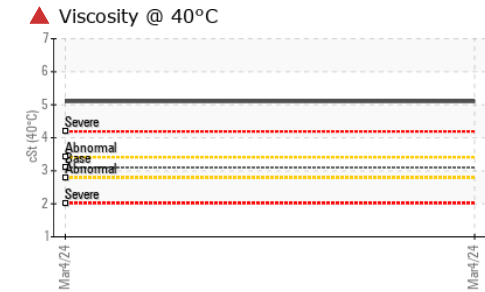
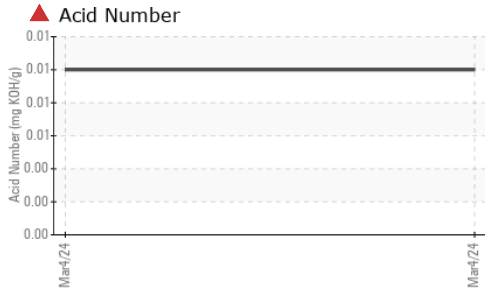
	method	limit/base	current	history1	history2
Silicon	ppm	ASTM D5185(m)	>25	0	---
Sodium	ppm	ASTM D5185(m)	>21	0	---
Potassium	ppm	ASTM D5185(m)	>20	<1	---
Water	%	ASTM D6304*	>0.0601	0.002	---
ppm Water	ppm	ASTM D6304*	>601	22	---

FLUID DEGRADATION

	method	limit/base	current	history1	history2
Acid Number (AN)	mg KOH/g	ASTM D974*		▲ 0.01	---



OIL ANALYSIS REPORT



VISUAL	method	limit/base	current	history1	history2	
White Metal	scalar	Visual*	NONE	NONE	---	---
Yellow Metal	scalar	Visual*	NONE	NONE	---	---
Precipitate	scalar	Visual*	NONE	NONE	---	---
Silt	scalar	Visual*	NONE	NONE	---	---
Debris	scalar	Visual*	NONE	NONE	---	---
Sand/Dirt	scalar	Visual*	NONE	NONE	---	---
Appearance	scalar	Visual*	NORML	NORML	---	---
Odor	scalar	Visual*	NORML	NORML	---	---
Emulsified Water	scalar	Visual*	>0.0601	NEG	---	---
Free Water	scalar	Visual*		NEG	---	---

FLUID PROPERTIES	method	limit/base	current	history1	history2	
Visc @ 40°C	cSt	ASTM D7279(m)	3.1	▲ 5.1	---	---
COC Flash Point	°C	ASTM D92*	100	▲ 146	---	---

SEDIMENT	method	limit/base	current	history1	history2	
Pentane Insolubles	%	ASTM D893(m)*		0.024	---	---

SIMULATED DISTILLATION (GCD)	method	limit/base	current	history1	history2	
(GCD) % < 335°C	°C	ASTM D2887*		69.21	---	---
(GCD) Initial Boiling Point	°C	ASTM D2887*		169.1	---	---
(GCD) 5% Distillation Point	°C	ASTM D2887*		227.1	---	---
(GCD) 10% Distillation Point	°C	ASTM D2887*		233.0	---	---
(GCD) 20% Distillation Point	°C	ASTM D2887*		251.4	---	---
(GCD) 30% Distillation Point	°C	ASTM D2887*		260.4	---	---
(GCD) 40% Distillation Point	°C	ASTM D2887*		276.4	---	---
(GCD) 50% Distillation Point	°C	ASTM D2887*		291.5	---	---
(GCD) 60% Distillation Point	°C	ASTM D2887*		309.9	---	---
(GCD) 70% Distillation Point	°C	ASTM D2887*		336.5	---	---
(GCD) 80% Distillation Point	°C	ASTM D2887*		404.2	---	---
(GCD) 90% Distillation Point	°C	ASTM D2887*		441.6	---	---
(GCD) FBP% Distillation Point	°C	ASTM D2887*		535.8	---	---

SAMPLE IMAGES	method	limit/base	current	history1	history2
Color				no image	no image
Bottom				no image	no image



Laboratory : WearCheck - C8-1175 Appleby Line, Burlington, ON L7L 5H9
Sample No. : WC
Lab Number : 02621858
Unique Number : 5746977
Test Package : TEST (Additional Tests: COC Flash, GC-PercFuel, GCD, ICP, KF, KV40, PntInsol, Spat, TAN Auto)

WEARCHECK CANADA INC.
 C8-1175 Appleby Line
 BURLINGTON, ON
 CA L7L 5H9
 Contact: Gloria Gonzalez
 gloriag@wearcheck.ca

To discuss this sample report, contact Customer Service at 1-800-268-2131.
 Test denoted (*) outside scope of accreditation, (m) method modified, (e) tested at external lab.
 Validity of results and interpretation are based on the sample and information as supplied.

T:
 F: (905)569-8605