



# CLEANLINESS TEST REPORT

Sample Rating Trend

**NORMAL**



Part Number  
**AT540098**  
Component  
**Hose Assembly**  
Fluid  
**KEROSENE (--- mL)**



## DIAGNOSIS

### Recommendation

This is a baseline read-out on the submitted sample. The hose or hose assembly fluid sample for analysis was collected in accordance with ISO/TS 18409 : Hydraulic fluid power - Methods of collecting a fluid sample for analysing the cleanliness of a hose or hose assembly.

### Contamination

The system cleanliness is acceptable for your target ISO 4406 cleanliness code. Cleanliness as per JDS-G169 Fluid Cleanliness Class 5.4 (ISO 4406 --/20/15).

## SAMPLE INFORMATION

	method	limit/base	current	history1	history2
Sample Number	Client Info		<b>PH</b>	---	---
Sample Date	Client Info		<b>17 Mar 2024</b>	---	---
Machine Age	hrs	Client Info	<b>0</b>	---	---
Oil Age	hrs	Client Info	<b>0</b>	---	---
Oil Changed	Client Info		<b>N/A</b>	---	---
Sample Status			<b>NORMAL</b>	---	---

## CONTAMINATION

	method	limit/base	current	history1	history2
Water	WC Method		<b>NEG</b>	---	---



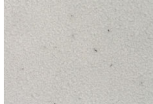
## FLUID CLEANLINESS

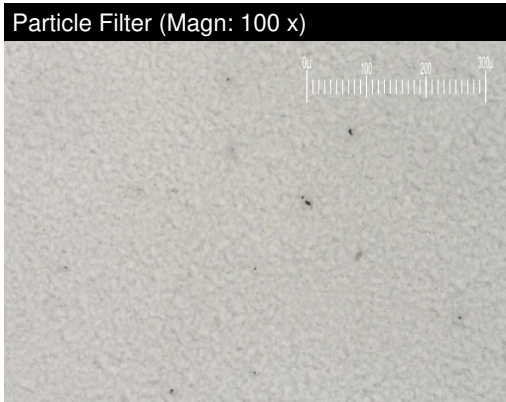
	method	limit/base	current	history1	history2
Particles >4µm	ASTM D7647		<b>1380</b>	---	---
Particles >6µm	ASTM D7647	>10000	<b>575</b>	---	---
Particles >14µm	ASTM D7647	>320	<b>67</b>	---	---
Particles >21µm	ASTM D7647	>80	<b>19</b>	---	---
Particles >38µm	ASTM D7647	>20	<b>1</b>	---	---
Particles >71µm	ASTM D7647	>4	<b>0</b>	---	---
Oil Cleanliness	ISO 4406 (c)	>--/20/15	<b>18/16/13</b>	---	---

## VISUAL

	method	limit/base	current	history1	history2
White Metal	scalar	Visual*	NONE	<b>NONE</b>	---
Yellow Metal	scalar	Visual*	NONE	<b>NONE</b>	---
Precipitate	scalar	Visual*	NONE	<b>NONE</b>	---
Silt	scalar	Visual*	NONE	<b>NONE</b>	---
Debris	scalar	Visual*	NONE	<b>NONE</b>	---
Sand/Dirt	scalar	Visual*	NONE	<b>NONE</b>	---
Appearance	scalar	Visual*	NORML	<b>NORML</b>	---
Odor	scalar	Visual*	NORML	<b>NORML</b>	---

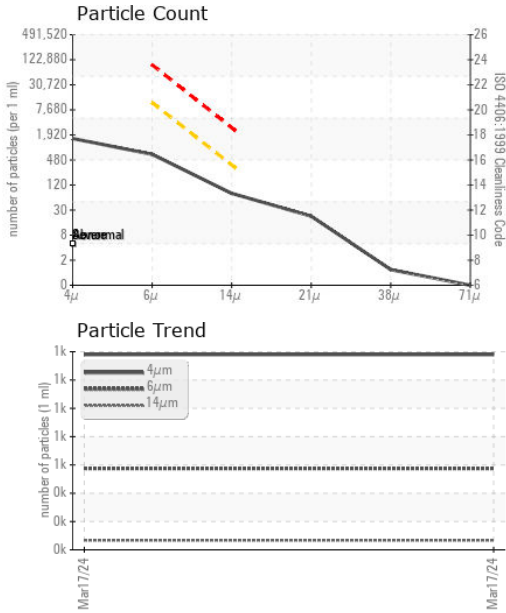
## SAMPLE IMAGES

	method	limit/base	current	history1	history2
Color				no image	no image
Bottom				no image	no image
PrtFilter				no image	no image

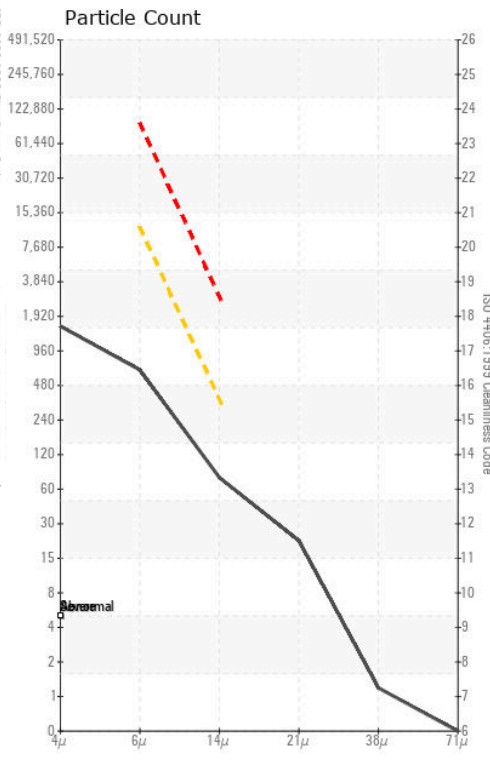




# CLEANLINESS TEST REPORT



## GRAPHS



**Laboratory** : WearCheck - C8-1175 Appleby Line, Burlington, ON L7L 5H9  
**Sample No.** : PH  
**Lab Number** : 02622537  
**Unique Number** : 5747656  
**Test Package** : TEST ( Additional Tests: PrtCount, PrtFilter, PrtFilterPic )

**PARKER HANNIFIN CANADA**  
 160 CHISHOLM DRIVE  
 MILTON, ON  
 CA L9T 3G9  
 Contact: Tom Raznatovic  
 tomislav.raznatovic@parker.com

To discuss this sample report, contact Customer Service at 1-800-268-2131.  
 Test denoted (\*) outside scope of accreditation, (m) method modified, (e) tested at external lab.  
 Validity of results and interpretation are based on the sample and information as supplied.

T:  
F: