

# FUEL REPORT

Sample Rating Trend

ISO

Area  
**WAJAX [6100268747]**  
Machine Id  
**GD10689C**

Component  
**Diesel Fuel**  
Fluid  
**No.2 DIESEL FUEL (ULTRALOW SULPHUR) (--- GAL)**



## DIAGNOSIS

### Recommendation

Les tests de laboratoire indiquent que ce carburant peut être utilisé et qu'il répond à toutes les exigences. Nous vous recommandons de filtrer ce fluide avant de l'utiliser. Nous recommandons le remplacement des filtres de ce composant. Nous vous recommandons d'échantillonner de nouveau dès que possible afin de contrôler la situation.

### Contaminants

Il y a une quantité modérée de particules (de 4 à 14 microns) dans le carburant. La teneur en eau est négligeable. La propreté du système est supérieure à la limite acceptable pour votre objectif de propreté ISO 4406.

### Fuel Condition

Tous les essais en laboratoire indiquent que cet échantillon satisfait aux spécifications pour le carburant diesel à ultra-faible teneur de soufre No.2 (US EPA/CGSB-3.517-3 type B). le carburant peut encore servir si la contamination peut être réduite à un niveau acceptable.

SAMPLE INFORMATION	method	limit/base	current	history1	history2
Sample Number	Client Info		<b>WA0019642</b>	GD0005890	---
Sample Date	Client Info		<b>11 Mar 2024</b>	20 Mar 2023	---
Machine Age	yrs	Client Info	<b>0</b>	0	---
Sample Status			<b>ABNORMAL</b>	ABNORMAL	---

PHYSICAL PROPERTIES	method	limit/base	current	history1	history2
Specific Gravity	ASTM D1298*	0.839	<b>0.831</b>	0.831	---
Fuel Color	text	Visual Screen*	<b>Red</b>	Pink	---
Visc @ 40°C	cSt	ASTM D7279(m)	<b>2.3</b>	2.2	---
Pensky-Martens Flash Point	°C	ASTM D7215*	<b>55.9</b>	57.4	---

SULFUR CONTENT	method	limit/base	current	history1	history2
Sulfur	ppm	ASTM D5185(m)	<b>3</b>	5	---

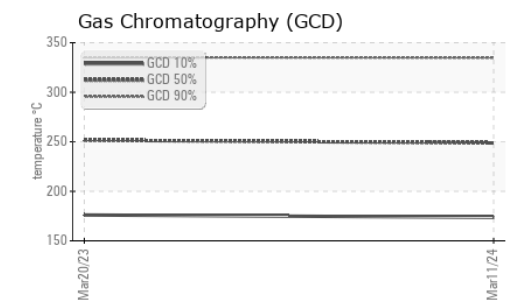
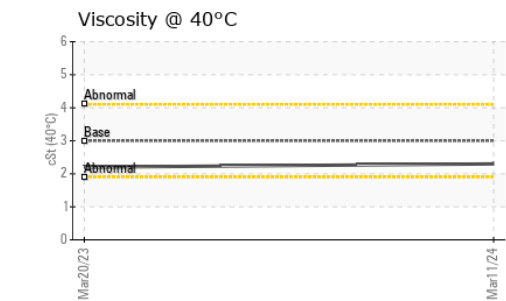
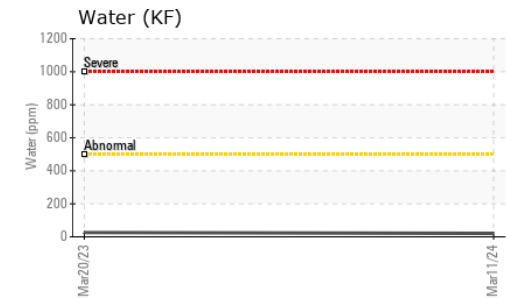
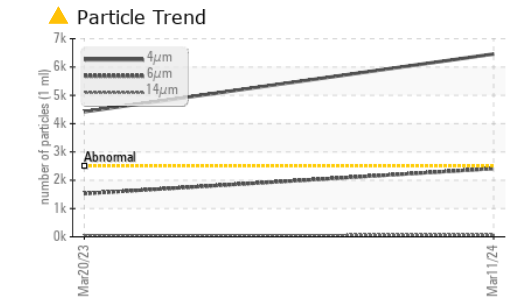
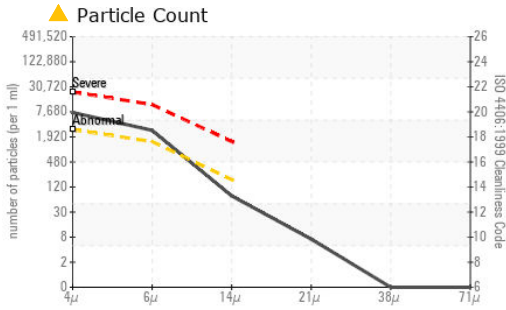
DISTILLATION	method	limit/base	current	history1	history2	
Initial Boiling Point	°C	ASTM D2887*	165	<b>167</b>	168	---
5% Distillation Point	°C	ASTM D2887*		<b>186</b>	189	---
10% Distill Point	°C	ASTM D2887*	201	<b>195</b>	198	---
15% Distillation Point	°C	ASTM D2887*		<b>202</b>	204	---
20% Distill Point	°C	ASTM D2887*	216	<b>209</b>	211	---
30% Distill Point	°C	ASTM D2887*	230	<b>222</b>	224	---
40% Distill Point	°C	ASTM D2887*	243	<b>234</b>	237	---
50% Distill Point	°C	ASTM D2887*	255	<b>247</b>	249	---
60% Distill Point	°C	ASTM D2887*	267	<b>261</b>	263	---
70% Distill Point	°C	ASTM D2887*	280	<b>275</b>	277	---
80% Distill Point	°C	ASTM D2887*	295	<b>292</b>	293	---
85% Distillation Point	°C	ASTM D2887*		<b>304</b>	305	---
90% Distill Point	°C	ASTM D2887*	310	<b>316</b>	316	---
95% Distillation Point	°C	ASTM D2887*		<b>337</b>	336	---
Final Boiling Point	°C	ASTM D2887*	341	<b>373</b>	358	---

IGNITION QUALITY	method	limit/base	current	history1	history2
API Gravity	ASTM D1298*	37.7	<b>38</b>	38	---
Cetane Index	ASTM D4737*	<40.0	<b>48</b>	49	---

CONTAMINANTS	method	limit/base	current	history1	history2	
Silicon	ppm	ASTM D5185(m)	<1.0	<b>0</b>	0	---
Sodium	ppm	ASTM D5185(m)	<0.1	<b>&lt;1</b>	<1	---
Potassium	ppm	ASTM D5185(m)	<0.1	<b>0</b>	0	---
Water	%	ASTM D6304*	<0.05	<b>0.002</b>	0.003	---
ppm Water	ppm	ASTM D6304*	<500	<b>21</b>	26.3	---

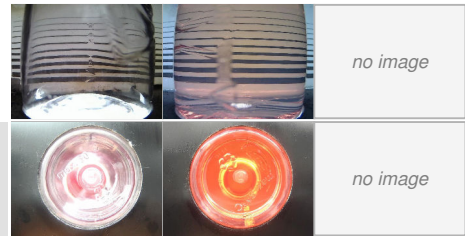
FLUID CLEANLINESS	method	limit/base	current	history1	history2
Particles >4µm	ASTM D7647	>2500	<b>▲ 6458</b>	● 4421	---
Particles >6µm	ASTM D7647	>1300	<b>● 2412</b>	▲ 1525	---
Particles >14µm	ASTM D7647	>160	<b>65</b>	56	---
Particles >21µm	ASTM D7647	>40	<b>6</b>	7	---
Particles >38µm	ASTM D7647	>10	<b>0</b>	0	---
Particles >71µm	ASTM D7647	>3	<b>0</b>	0	---
Oil Cleanliness	ISO 4406 (c)	>18/17/14	<b>▲ 20/18/13</b>	▲ 19/18/13	---

# FUEL REPORT

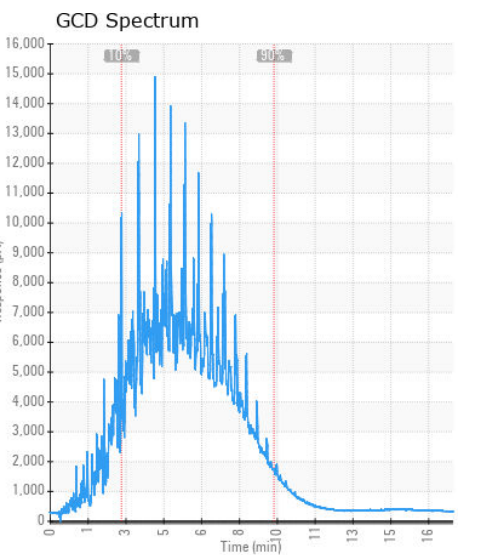
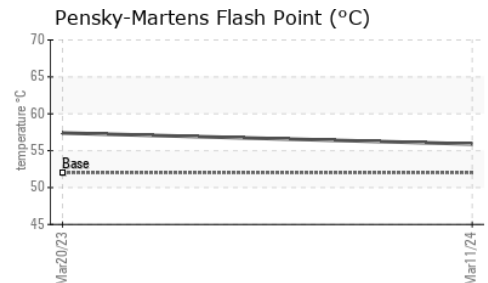
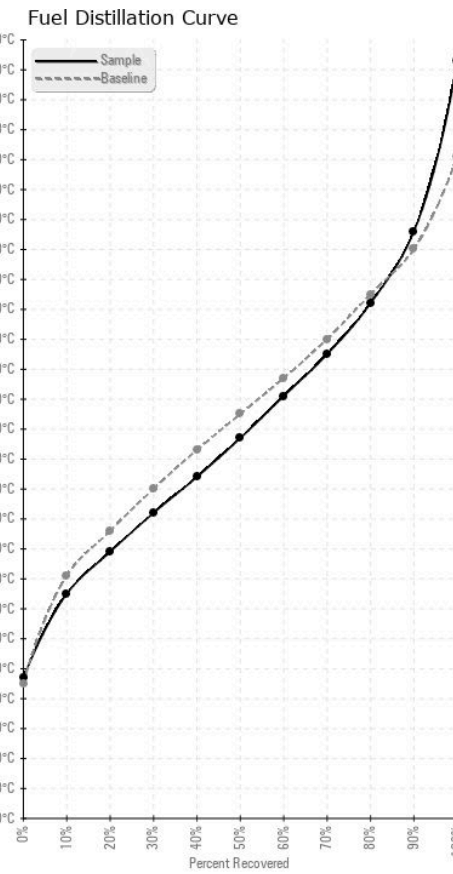


HEAVY METALS	method	limit/base	current	history1	history2
Aluminum	ppm	ASTM D5185(m)	<0.1	0	---
Nickel	ppm	ASTM D5185(m)	<0.1	0	---
Lead	ppm	ASTM D5185(m)	<0.1	<1	---
Vanadium	ppm	ASTM D5185(m)	<0.1	0	---
Iron	ppm	ASTM D5185(m)	<0.1	<1	---
Calcium	ppm	ASTM D5185(m)	<0.1	<1	---
Magnesium	ppm	ASTM D5185(m)	<0.1	<1	---
Phosphorus	ppm	ASTM D5185(m)	<0.1	<1	---
Zinc	ppm	ASTM D5185(m)	<0.1	<1	---

SAMPLE IMAGES	method	limit/base	current	history1	history2
Color					
Bottom					



## GRAPHS



**Laboratory** : WearCheck - C8-1175 Appleby Line, Burlington, ON L7L 5H9  
**Sample No.** : WA0019642  
**Lab Number** : 02623564  
**Unique Number** : 5748683  
**Test Package** : FUEL ( Additional Tests: CC Flash, GC-PercFuel, PrtCount )

**Received** : 20 Mar 2024  
**Tested** : 21 Mar 2024  
**Diagnosed** : 21 Mar 2024 - Kevin Marson  
**Generatrice Drummond**  
 243 rue des ARTISANS  
 SAINT-GERMAIN-DE-GRANTHAM, QC  
 CA J0C 1K0  
 Contact: Valerie Poirier  
 poiirivalerie@generatricedrummond.com  
 T: (819)398-6811  
 F: (819)398-7022

To discuss this sample report, contact Customer Service at 1-800-268-2131.  
 Test denoted (\*) outside scope of accreditation, (m) method modified, (e) tested at external lab.  
 Validity of results and interpretation are based on the sample and information as supplied.