



FUEL REPORT

Sample Rating Trend

ISO



Area
[TJ034209]
 Machine Id
B+M BUILD 201
 Component
Diesel Fuel
 Fluid
No.2 DIESEL FUEL (ULTRALOW SULPHUR) (--- GAL)



DIAGNOSIS

Recommendation

Laboratory test indicate that this fuel is suitable for use and meets all test requirements. We advise that you filter this fluid before use. We recommend you service the filters on this component. Resample at the next service interval to monitor.

Contaminants

There is a light amount of silt (particulates < 14 microns in size) present in the fuel. The water content is negligible.

Fuel Condition

All laboratory tests indicate that this sample meets specifications for No.2 ultra-low-sulfur diesel fuel (US EPA/CGSB-3.517-3 type B).

SAMPLE INFORMATION

	method	limit/base	current	history1	history2
Sample Number	Client Info		WC0563106	---	---
Sample Date	Client Info		29 Feb 2024	---	---
Machine Age	hrs	Client Info	0	---	---
Sample Status			ATTENTION	---	---

PHYSICAL PROPERTIES

	method	limit/base	current	history1	history2
Specific Gravity	ASTM D1298*	0.839	0.838	---	---
Fuel Color	text	Visual Screen*	Yellow	---	---
Visc @ 40°C	cSt	ASTM D7279(m)	3.0	---	---
Pensky-Martens Flash Point	°C	ASTM D7215*	52	---	---

SULFUR CONTENT

	method	limit/base	current	history1	history2
Sulfur	ppm	ASTM D5185(m)	10	---	---

DISTILLATION

	method	limit/base	current	history1	history2	
Initial Boiling Point	°C	ASTM D2887*	165	167	---	---
5% Distillation Point	°C	ASTM D2887*		193	---	---
10% Distill Point	°C	ASTM D2887*	201	203	---	---
15% Distillation Point	°C	ASTM D2887*		211	---	---
20% Distill Point	°C	ASTM D2887*	216	218	---	---
30% Distill Point	°C	ASTM D2887*	230	233	---	---
40% Distill Point	°C	ASTM D2887*	243	246	---	---
50% Distill Point	°C	ASTM D2887*	255	259	---	---
60% Distill Point	°C	ASTM D2887*	267	272	---	---
70% Distill Point	°C	ASTM D2887*	280	286	---	---
80% Distill Point	°C	ASTM D2887*	295	301	---	---
85% Distillation Point	°C	ASTM D2887*		311	---	---
90% Distill Point	°C	ASTM D2887*	310	321	---	---
95% Distillation Point	°C	ASTM D2887*		337	---	---
Final Boiling Point	°C	ASTM D2887*	341	371	---	---

IGNITION QUALITY

	method	limit/base	current	history1	history2
API Gravity	ASTM D1298*	37.7	37	---	---
Cetane Index	ASTM D4737*	<40.0	49	---	---

CONTAMINANTS

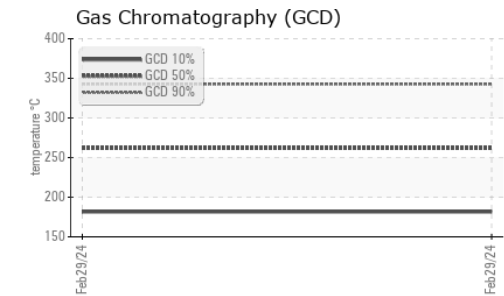
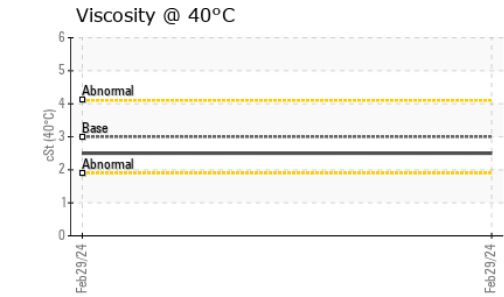
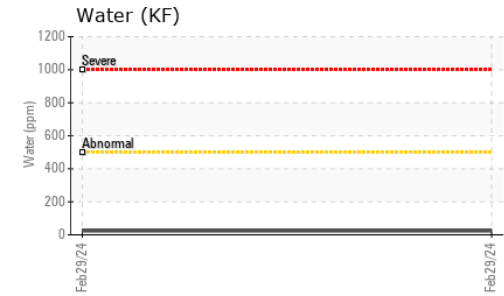
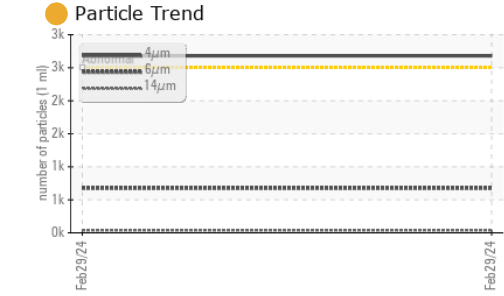
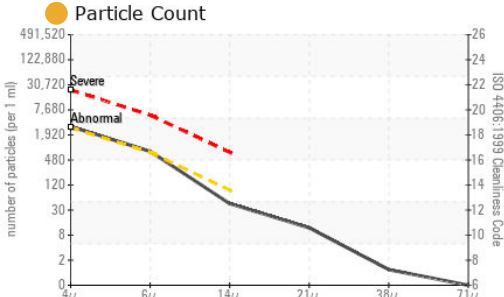
	method	limit/base	current	history1	history2
Silicon	ppm	ASTM D5185(m)	<1.0	0	---
Sodium	ppm	ASTM D5185(m)	<0.1	<1	---
Potassium	ppm	ASTM D5185(m)	<0.1	0	---
Water	%	ASTM D6304*	<0.05	0.002	---
ppm Water	ppm	ASTM D6304*	<500	24	---

FLUID CLEANLINESS

	method	limit/base	current	history1	history2
Particles >4µm	ASTM D7647	>2500	2680	---	---
Particles >6µm	ASTM D7647	>640	677	---	---
Particles >14µm	ASTM D7647	>80	38	---	---
Particles >21µm	ASTM D7647	>20	10	---	---
Particles >38µm	ASTM D7647	>4	1	---	---
Particles >71µm	ASTM D7647	>3	0	---	---
Oil Cleanliness	ISO 4406 (c)	>18/16/13	19/17/12	---	---



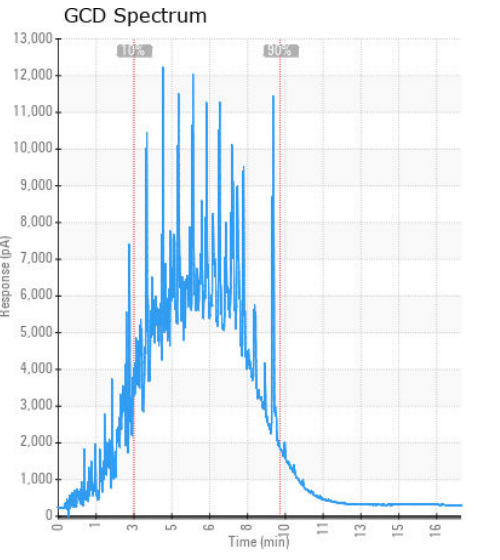
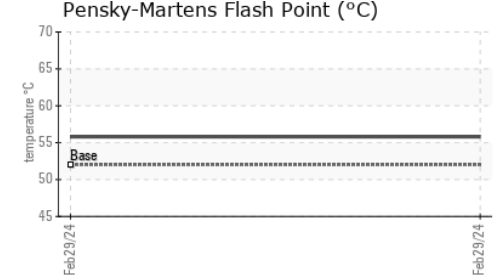
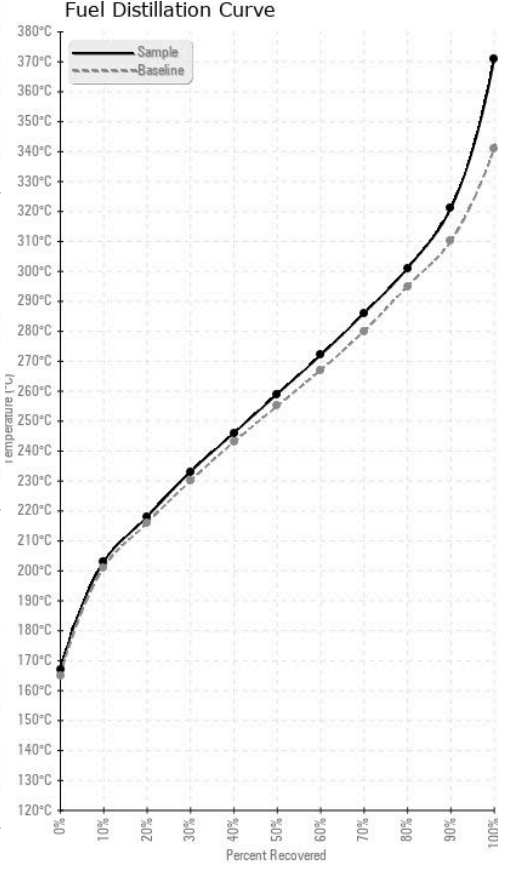
FUEL REPORT



HEAVY METALS	method	limit/base	current	history1	history2
Aluminum	ppm	ASTM D5185(m)	<0.1	0	---
Nickel	ppm	ASTM D5185(m)	<0.1	0	---
Lead	ppm	ASTM D5185(m)	<1	---	---
Vanadium	ppm	ASTM D5185(m)	<0.1	0	---
Iron	ppm	ASTM D5185(m)	<0.1	0	---
Calcium	ppm	ASTM D5185(m)	<0.1	<1	---
Magnesium	ppm	ASTM D5185(m)	<0.1	0	---
Phosphorus	ppm	ASTM D5185(m)	<0.1	<1	---
Zinc	ppm	ASTM D5185(m)	<0.1	1	---

SAMPLE IMAGES	method	limit/base	current	history1	history2
Color				no image	no image
Bottom				no image	no image

GRAPHS



Laboratory : WearCheck - C8-1175 Appleby Line, Burlington, ON L7L 5H9
Sample No. : WC0563106 **Received** : 20 Mar 2024
Lab Number : 02623566 **Tested** : 21 Mar 2024
Unique Number : 5748685 **Diagnosed** : 21 Mar 2024 - Kevin Marson
Test Package : FUEL (Additional Tests: CC Flash, GC-PercFuel, PrtCount)

To discuss this sample report, contact Customer Service at 1-800-268-2131.
 Test denoted (*) outside scope of accreditation, (m) method modified, (e) tested at external lab.
 Validity of results and interpretation are based on the sample and information as supplied.

GENREP LTD.
 121 WATLINE AVENUE
 MISSISSAUGA, ON
 CA L4Z 1P2
 Contact: Amit Singh
 asingh@genrep.com
 T: (905)502-9950
 F: (905)502-9960