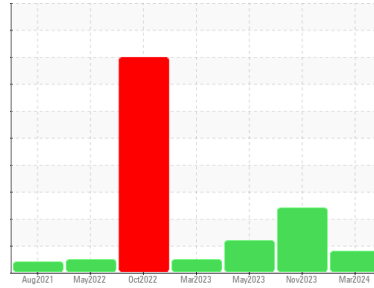




OIL ANALYSIS REPORT

Sample Rating Trend



ISO



Area
Press 7
 Machine Id
Press 7 Handling/Stretchers Hydraulics
 Component
Hydraulic System
 Fluid
PETRO CANADA HYDREX AW 46 (--- GAL)

DIAGNOSIS

Recommendation

We recommend you service the filters on this component. Resample at the next service interval to monitor. NOTE: Please provide information regarding reservoir capacity, filter type and micron rating with next sample.

Wear

All component wear rates are normal.

Contamination

There is a light amount of silt (particulates < 14 microns in size) present in the oil.

Fluid Condition

The AN level is acceptable for this fluid. The condition of the oil is suitable for further service.

SAMPLE INFORMATION

	method	limit/base	current	history1	history2
Sample Number	Client Info		WC0681834	WC0828658	WC0796113
Sample Date	Client Info		20 Mar 2024	06 Nov 2023	16 May 2023
Machine Age	hrs	Client Info	0	0	0
Oil Age	hrs	Client Info	0	0	0
Oil Changed	Client Info		N/A	N/A	N/A
Sample Status			ATTENTION	ABNORMAL	ATTENTION

CONTAMINATION

	method	limit/base	current	history1	history2
Water	WC Method	>0.05	NEG	NEG	NEG

WEAR METALS

	method	limit/base	current	history1	history2	
Iron	ppm	ASTM D5185(m)	>20	2	2	1
Chromium	ppm	ASTM D5185(m)	>20	<1	<1	<1
Nickel	ppm	ASTM D5185(m)	>20	0	<1	0
Titanium	ppm	ASTM D5185(m)		0	0	0
Silver	ppm	ASTM D5185(m)		0	<1	0
Aluminum	ppm	ASTM D5185(m)	>20	0	<1	<1
Lead	ppm	ASTM D5185(m)	>20	0	<1	<1
Copper	ppm	ASTM D5185(m)	>20	6	6	7
Tin	ppm	ASTM D5185(m)	>20	0	0	0
Antimony	ppm	ASTM D5185(m)		0	0	<1
Vanadium	ppm	ASTM D5185(m)		0	0	0
Beryllium	ppm	ASTM D5185(m)		0	0	0
Cadmium	ppm	ASTM D5185(m)		0	0	0

ADDITIVES

	method	limit/base	current	history1	history2	
Boron	ppm	ASTM D5185(m)	0	0	1	<1
Barium	ppm	ASTM D5185(m)	0	0	<1	0
Molybdenum	ppm	ASTM D5185(m)	0	0	0	<1
Manganese	ppm	ASTM D5185(m)	0	0	0	0
Magnesium	ppm	ASTM D5185(m)	0	3	2	4
Calcium	ppm	ASTM D5185(m)	50	57	46	65
Phosphorus	ppm	ASTM D5185(m)	330	325	325	364
Zinc	ppm	ASTM D5185(m)	430	390	394	401
Sulfur	ppm	ASTM D5185(m)	760	788	809	880
Lithium	ppm	ASTM D5185(m)		<1	<1	<1

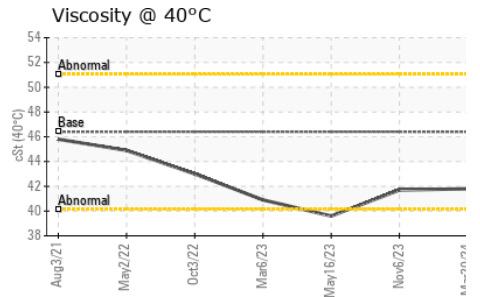
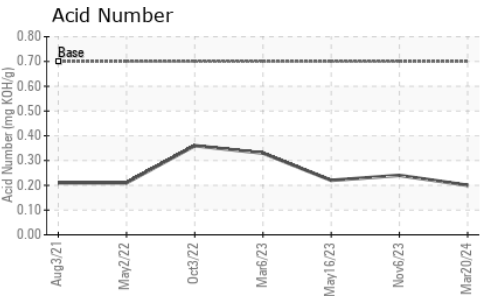
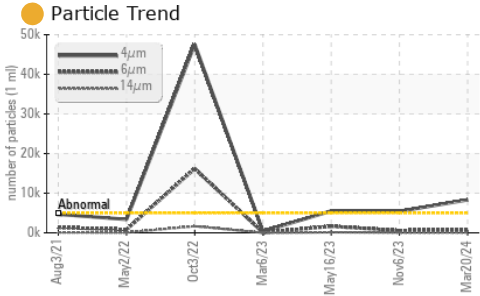
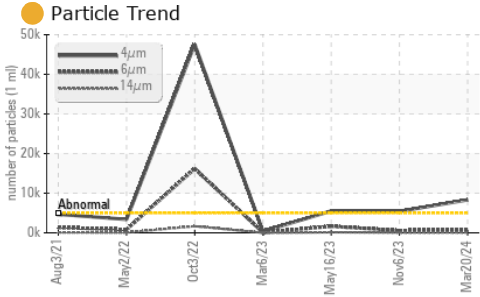
CONTAMINANTS

	method	limit/base	current	history1	history2	
Silicon	ppm	ASTM D5185(m)	>15	1	2	3
Sodium	ppm	ASTM D5185(m)		<1	<1	<1
Potassium	ppm	ASTM D5185(m)	>20	0	0	0

FLUID CLEANLINESS

	method	limit/base	current	history1	history2
Particles >4µm	ASTM D7647	>5000	8322	5421	5515
Particles >6µm	ASTM D7647	>1300	872	547	1644
Particles >14µm	ASTM D7647	>160	63	40	143
Particles >21µm	ASTM D7647	>40	19	10	44
Particles >38µm	ASTM D7647	>10	2	1	2
Particles >71µm	ASTM D7647	>3	1	0	0
Oil Cleanliness	ISO 4406 (c)	>19/17/14	20/17/13	20/16/12	20/18/14

OIL ANALYSIS REPORT

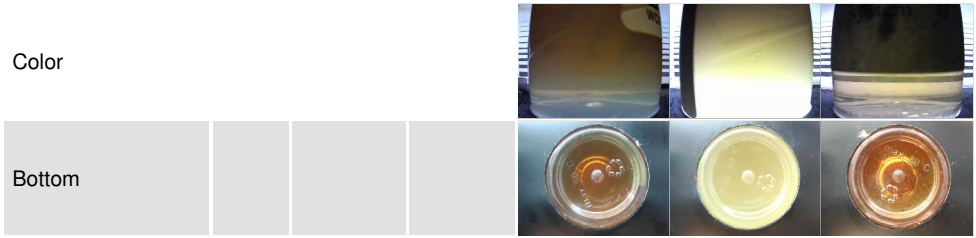


FLUID DEGRADATION		method	limit/base	current	history1	history2
Acid Number (AN)	mg KOH/g	ASTM D974*	0.70	0.20	0.24	0.22

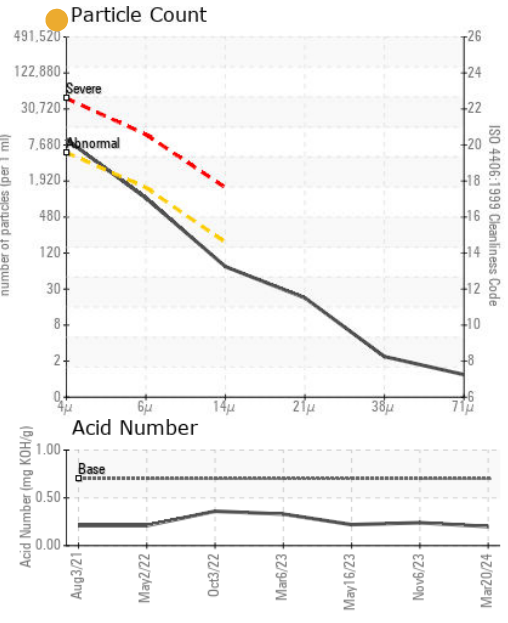
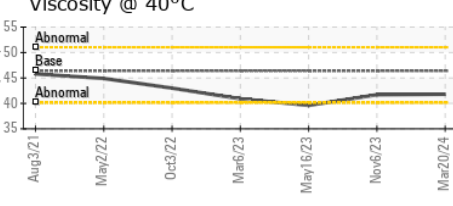
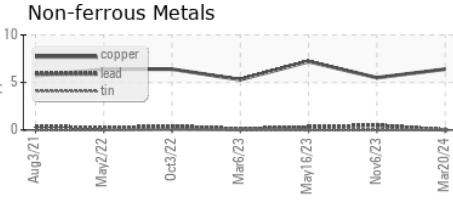
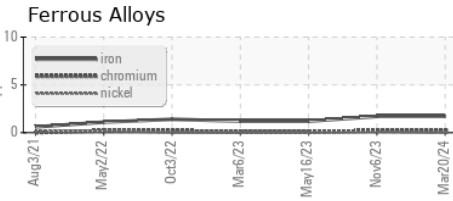
VISUAL		method	limit/base	current	history1	history2
White Metal	scalar	Visual*	NONE	NONE	NONE	NONE
Yellow Metal	scalar	Visual*	NONE	NONE	NONE	NONE
Precipitate	scalar	Visual*	NONE	NONE	NONE	NONE
Silt	scalar	Visual*	NONE	NONE	NONE	NONE
Debris	scalar	Visual*	NONE	NONE	NONE	NONE
Sand/Dirt	scalar	Visual*	NONE	NONE	NONE	NONE
Appearance	scalar	Visual*	NORML	NORML	NORML	NORML
Odor	scalar	Visual*	NORML	NORML	NORML	NORML
Emulsified Water	scalar	Visual*	>0.05	NEG	.2%	NEG
Free Water	scalar	Visual*		NEG	NEG	NEG

FLUID PROPERTIES		method	limit/base	current	history1	history2
Visc @ 40°C	cSt	ASTM D7279(m)	46.4	41.8	41.7	39.6

SAMPLE IMAGES		method	limit/base	current	history1	history2
---------------	--	--------	------------	---------	----------	----------



GRAPHS



Laboratory : WearCheck - C8-1175 Appleby Line, Burlington, ON L7L 5H9
Sample No. : WC0681834
Lab Number : **02623722**
Unique Number : 5748841
Test Package : IND 2
Received : 21 Mar 2024
Tested : 22 Mar 2024
Diagnosed : 22 Mar 2024 - Wes Davis

CAN ART ALUMINUM EXTRUSION INC
 428 JUTRAS DRIVE SOUTH
 TECUMSEH, ON
 CA N8N 5C5
 Contact: GARY FOSTER
 GARY@CANART.COM
 T: (519)727-4399
 F: (519)727-6434

To discuss this sample report, contact Customer Service at 1-800-268-2131.
 Test denoted (*) outside scope of accreditation, (m) method modified, (e) tested at external lab.
 Validity of results and interpretation are based on the sample and information as supplied.