

FUEL REPORT

Sample Rating Trend

NORMAL



Machine Id
KUBOTA 7NX1356

Component
Diesel Fuel

Fluid
No.1 DIESEL FUEL (ULTRALOW SULPHUR) (--- LTR)

DIAGNOSIS

Recommendation

Les tests de laboratoire indiquent que ce carburant peut être utilisé et qu'il répond à toutes les exigences. Échantillonner de nouveau l'équipement au prochain intervalle de vidange afin d'en surveiller la condition.

Contaminants

La propreté du système est acceptable pour votre objectif de propreté ISO 4406. La teneur en eau est négligeable. Il n'y a aucun indice de contamination dans le carburant diesel.

Fuel Condition

Tous les essais en laboratoire indiquent que cet échantillon satisfait aux spécifications pour le carburant diesel à ultra-faible teneur de soufre No.1 (US EPA/CGSB-3.517-3 type A).

| SAMPLE INFORMATION | | method | limit/base | current | history1 | history2 |
|--------------------|-------------|-------------|------------|--------------------|----------|----------|
| Sample Number | Client Info | | | WA0021132 | --- | --- |
| Sample Date | Client Info | | | 19 Mar 2024 | --- | --- |
| Machine Age | hrs | Client Info | | 0 | --- | --- |
| Sample Status | | | | NORMAL | --- | --- |

| PHYSICAL PROPERTIES | | method | limit/base | current | history1 | history2 |
|----------------------------|------|----------------|------------|---------------|----------|----------|
| Specific Gravity | | ASTM D1298* | 0.825 | 0.813 | --- | --- |
| Fuel Color | text | Visual Screen* | Clear | Yellow | --- | --- |
| Visc @ 40°C | cSt | ASTM D7279(m) | 1.8 | 1.6 | --- | --- |
| Pensky-Martens Flash Point | °C | ASTM D7215* | 38 | 46.1 | --- | --- |

| SULFUR CONTENT | | method | limit/base | current | history1 | history2 |
|----------------|-----|---------------|------------|-----------|----------|----------|
| Sulfur | ppm | ASTM D5185(m) | 10 | 12 | --- | --- |

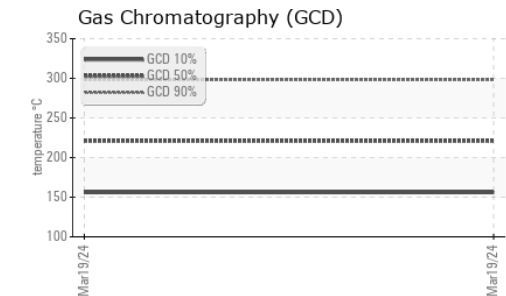
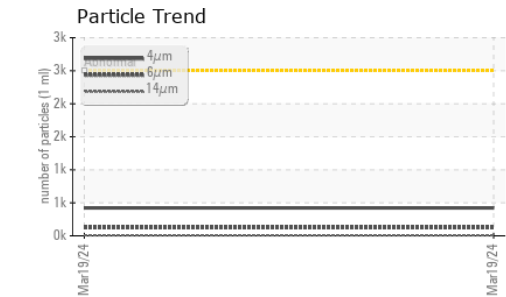
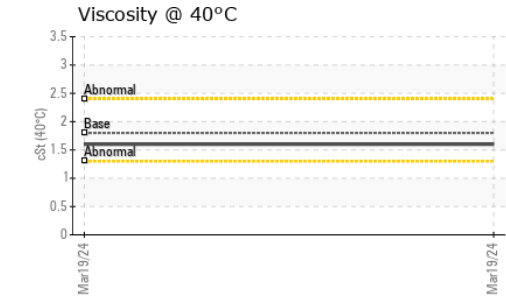
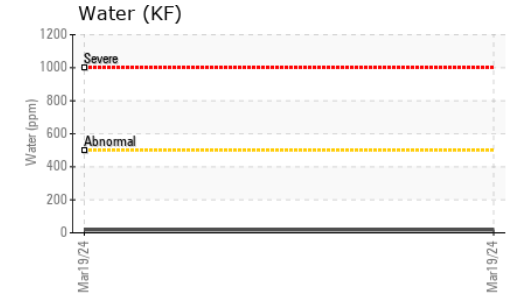
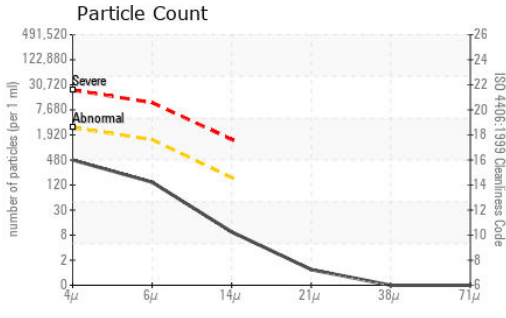
| DISTILLATION | | method | limit/base | current | history1 | history2 |
|------------------------|----|-------------|------------|------------|----------|----------|
| Initial Boiling Point | °C | ASTM D2887* | 159 | 152 | --- | --- |
| 5% Distillation Point | °C | ASTM D2887* | | 169 | --- | --- |
| 10% Distill Point | °C | ASTM D2887* | 184 | 175 | --- | --- |
| 15% Distillation Point | °C | ASTM D2887* | | 182 | --- | --- |
| 20% Distill Point | °C | ASTM D2887* | 196 | 188 | --- | --- |
| 30% Distill Point | °C | ASTM D2887* | 205 | 198 | --- | --- |
| 40% Distill Point | °C | ASTM D2887* | 216 | 209 | --- | --- |
| 50% Distill Point | °C | ASTM D2887* | 227 | 220 | --- | --- |
| 60% Distill Point | °C | ASTM D2887* | 238 | 232 | --- | --- |
| 70% Distill Point | °C | ASTM D2887* | 251 | 243 | --- | --- |
| 80% Distill Point | °C | ASTM D2887* | 264 | 259 | --- | --- |
| 85% Distillation Point | °C | ASTM D2887* | | 270 | --- | --- |
| 90% Distill Point | °C | ASTM D2887* | 288 | 281 | --- | --- |
| 95% Distillation Point | °C | ASTM D2887* | | 299 | --- | --- |
| Final Boiling Point | °C | ASTM D2887* | 309 | 331 | --- | --- |

| IGNITION QUALITY | | method | limit/base | current | history1 | history2 |
|------------------|--|-------------|------------|-----------|----------|----------|
| API Gravity | | ASTM D1298* | 40.1 | 42 | --- | --- |
| Cetane Index | | ASTM D4737* | <40.0 | 47 | --- | --- |

| CONTAMINANTS | | method | limit/base | current | history1 | history2 |
|--------------|-----|---------------|------------|--------------|----------|----------|
| Silicon | ppm | ASTM D5185(m) | <1.0 | 0 | --- | --- |
| Sodium | ppm | ASTM D5185(m) | <0.1 | <1 | --- | --- |
| Potassium | ppm | ASTM D5185(m) | <0.1 | 0 | --- | --- |
| Water | % | ASTM D6304* | <0.05 | 0.002 | --- | --- |
| ppm Water | ppm | ASTM D6304* | <500 | 18 | --- | --- |

| FLUID CLEANLINESS | | method | limit/base | current | history1 | history2 |
|-------------------|--|--------------|------------|-----------------|----------|----------|
| Particles >4µm | | ASTM D7647 | >2500 | 422 | --- | --- |
| Particles >6µm | | ASTM D7647 | >1300 | 124 | --- | --- |
| Particles >14µm | | ASTM D7647 | >160 | 8 | --- | --- |
| Particles >21µm | | ASTM D7647 | >40 | 1 | --- | --- |
| Particles >38µm | | ASTM D7647 | >10 | 0 | --- | --- |
| Particles >71µm | | ASTM D7647 | >3 | 0 | --- | --- |
| Oil Cleanliness | | ISO 4406 (c) | >18/17/14 | 16/14/10 | --- | --- |

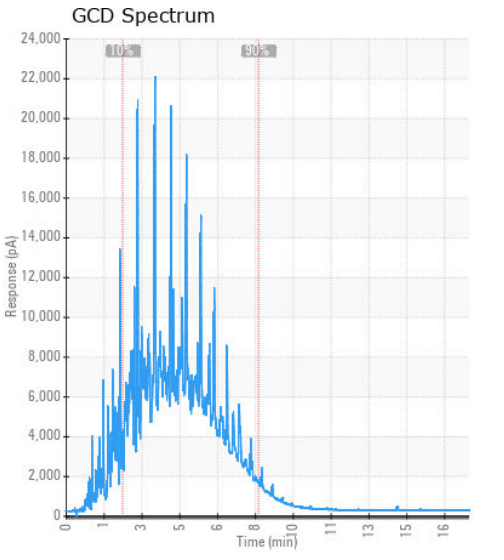
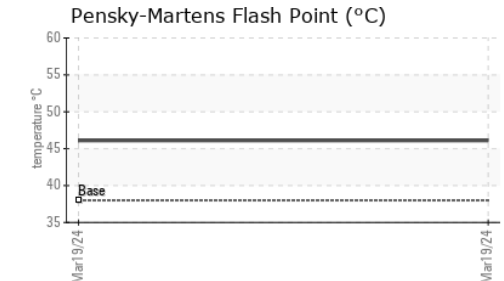
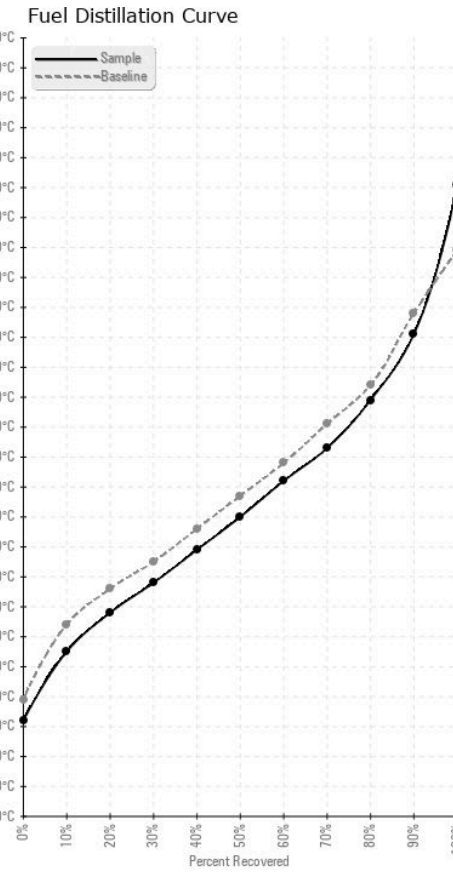
FUEL REPORT



| HEAVY METALS | method | limit/base | current | history1 | history2 |
|--------------|--------|---------------|---------|----------|----------|
| Aluminum | ppm | ASTM D5185(m) | <0.1 | 0 | --- |
| Nickel | ppm | ASTM D5185(m) | <0.1 | 0 | --- |
| Lead | ppm | ASTM D5185(m) | <0.1 | 0 | --- |
| Vanadium | ppm | ASTM D5185(m) | <0.1 | 0 | --- |
| Iron | ppm | ASTM D5185(m) | <0.1 | 0 | --- |
| Calcium | ppm | ASTM D5185(m) | <0.1 | 0 | --- |
| Magnesium | ppm | ASTM D5185(m) | <0.1 | 0 | --- |
| Phosphorus | ppm | ASTM D5185(m) | <0.1 | <1 | --- |
| Zinc | ppm | ASTM D5185(m) | <0.1 | 0 | --- |

| SAMPLE IMAGES | method | limit/base | current | history1 | history2 |
|---------------|--------|------------|---------|----------|----------|
| Color | | | | no image | no image |
| Bottom | | | | no image | no image |

GRAPHS



Laboratory : WearCheck - C8-1175 Appleby Line, Burlington, ON L7L 5H9
Sample No. : WA0021132 **Received** : 21 Mar 2024
Lab Number : 02623866 **Tested** : 26 Mar 2024
Unique Number : 5748985 **Diagnosed** : 26 Mar 2024 - Bill Quesnel
Test Package : FUEL (Additional Tests: CC Flash, GC-PercFuel, PrtCount, SpecGravity)

To discuss this sample report, contact Customer Service at 1-800-268-2131.
 Test denoted (*) outside scope of accreditation, (m) method modified, (e) tested at external lab.
 Validity of results and interpretation are based on the sample and information as supplied.

Wajax Limited
 2997 AV. WATT
 Quebec, QC
 CA G1X 3W1
 Contact: Karina Bolduc
 kbolduc@wajax.com
 T: (418)651-4236
 F: (418)651-9432