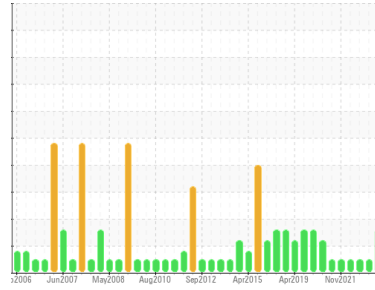




# OIL ANALYSIS REPORT

Sample Rating Trend



ISO



Machine Id  
**CAB G LGBR**

Component  
**Bearing**

Fluid  
**ESSO TERESSO ISO 68 (159 LTR)**

## DIAGNOSIS

### Recommendation

We recommend you service the filters on this component. Resample at the next service interval to monitor.

### Wear

All component wear rates are normal.

### Contamination

There is a light amount of silt (particulates < 14 microns in size) present in the oil.

### Fluid Condition

The AN level is acceptable for this fluid. The condition of the oil is suitable for further service.

SAMPLE INFORMATION		method	limit/base	current	history1	history2
Sample Number	Client Info			<b>WC0706097</b>	WC0455573	WC0455743
Sample Date	Client Info			<b>21 Mar 2024</b>	04 May 2023	05 Oct 2022
Machine Age	hrs	Client Info		<b>0</b>	25	25
Oil Age	hrs	Client Info		<b>0</b>	2	2
Oil Changed	Client Info			<b>N/A</b>	N/A	N/A
Sample Status				<b>ATTENTION</b>	NORMAL	NORMAL

CONTAMINATION		method	limit/base	current	history1	history2
Water	WC Method		>2	<b>NEG</b>	NEG	NEG

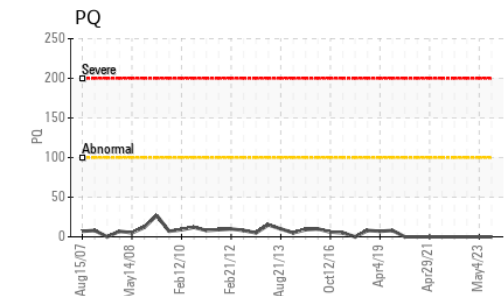
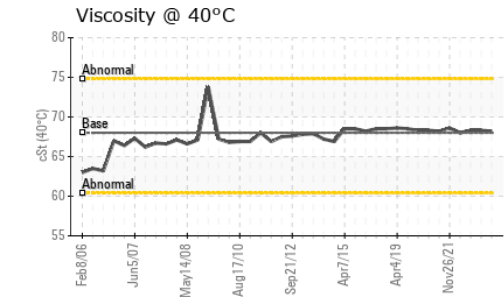
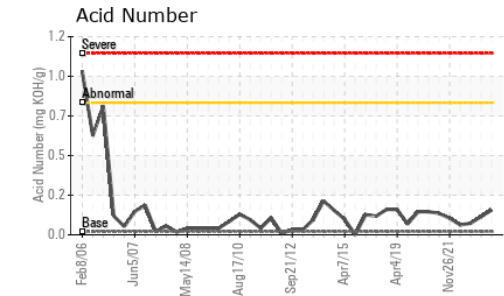
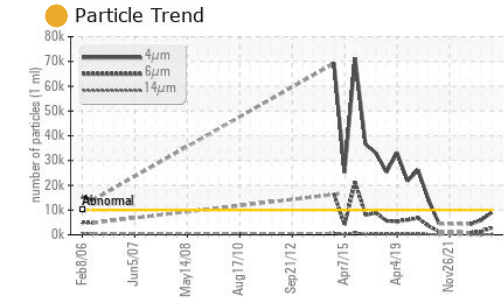
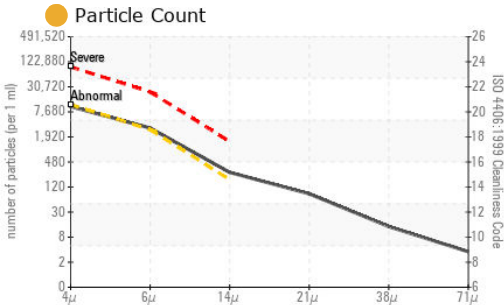
WEAR METALS		method	limit/base	current	history1	history2
PQ		ASTM D8184*		<b>0</b>	0	0
Iron	ppm	ASTM D5185(m)	>63	<b>1</b>	1	1
Chromium	ppm	ASTM D5185(m)	>20	<b>0</b>	0	0
Nickel	ppm	ASTM D5185(m)	>20	<b>0</b>	<1	<1
Titanium	ppm	ASTM D5185(m)		<b>0</b>	0	0
Silver	ppm	ASTM D5185(m)		<b>0</b>	0	0
Aluminum	ppm	ASTM D5185(m)	>2	<b>&lt;1</b>	<1	<1
Lead	ppm	ASTM D5185(m)	>161	<b>0</b>	<1	<1
Copper	ppm	ASTM D5185(m)	>13	<b>&lt;1</b>	<1	<1
Tin	ppm	ASTM D5185(m)	>27	<b>0</b>	0	0
Antimony	ppm	ASTM D5185(m)		<b>0</b>	<1	0
Vanadium	ppm	ASTM D5185(m)		<b>0</b>	0	0
Beryllium	ppm	ASTM D5185(m)		<b>0</b>	0	0
Cadmium	ppm	ASTM D5185(m)		<b>0</b>	0	0

ADDITIVES		method	limit/base	current	history1	history2
Boron	ppm	ASTM D5185(m)	4.5	<b>0</b>	<1	<1
Barium	ppm	ASTM D5185(m)	0.4	<b>0</b>	0	0
Molybdenum	ppm	ASTM D5185(m)	0	<b>0</b>	0	0
Manganese	ppm	ASTM D5185(m)		<b>0</b>	0	0
Magnesium	ppm	ASTM D5185(m)	0	<b>&lt;1</b>	0	0
Calcium	ppm	ASTM D5185(m)	0	<b>0</b>	0	0
Phosphorus	ppm	ASTM D5185(m)	0.7	<b>&lt;1</b>	0	0
Zinc	ppm	ASTM D5185(m)	0	<b>1</b>	1	1
Sulfur	ppm	ASTM D5185(m)	1315	<b>2055</b>	2218	2162
Lithium	ppm	ASTM D5185(m)		<b>&lt;1</b>	<1	<1

CONTAMINANTS		method	limit/base	current	history1	history2
Silicon	ppm	ASTM D5185(m)	>12	<b>3</b>	4	4
Sodium	ppm	ASTM D5185(m)		<b>&lt;1</b>	<1	<1
Potassium	ppm	ASTM D5185(m)	>20	<b>0</b>	<1	<1



# OIL ANALYSIS REPORT



**Laboratory** : WearCheck - C8-1175 Appleby Line, Burlington, ON L7L 5H9  
**Sample No.** : WC0706097 **Received** : 25 Mar 2024  
**Lab Number** : 02624299 **Tested** : 27 Mar 2024  
**Unique Number** : 5749418 **Diagnosed** : 27 Mar 2024 - Wes Davis  
**Test Package** : IND 2 ( Additional Tests: PQ, PrtCount, TAN Man )

To discuss this sample report, contact Customer Service at 1-800-268-2131.  
 Test denoted (\*) outside scope of accreditation, (m) method modified, (e) tested at external lab.  
 Validity of results and interpretation are based on the sample and information as supplied.

FLUID CLEANLINESS	method	limit/base	current	history1	history2
Particles >4µm	ASTM D7647	>10000	<b>8955</b>	5898	4311
Particles >6µm	ASTM D7647	>2500	<b>2738</b>	1321	873
Particles >14µm	ASTM D7647	>160	<b>238</b>	73	44
Particles >21µm	ASTM D7647	>40	<b>73</b>	19	11
Particles >38µm	ASTM D7647	>10	<b>12</b>	1	1
Particles >71µm	ASTM D7647	>3	<b>3</b>	0	0
Oil Cleanliness	ISO 4406 (c)	>20/18/14	<b>20/19/15</b>	20/18/13	19/17/13

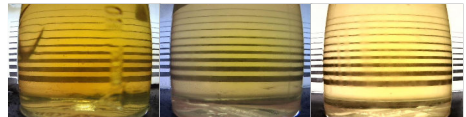
FLUID DEGRADATION	method	limit/base	current	history1	history2
Acid Number (AN)	mg KOH/g ASTM D974*	0.02	<b>0.15</b>	0.11	0.07

VISUAL	method	limit/base	current	history1	history2
White Metal	scalar Visual*	NONE	<b>NONE</b>	NONE	NONE
Yellow Metal	scalar Visual*	NONE	<b>NONE</b>	NONE	NONE
Precipitate	scalar Visual*	NONE	<b>VLITE</b>	NONE	NONE
Silt	scalar Visual*	NONE	<b>NONE</b>	NONE	NONE
Debris	scalar Visual*	NONE	<b>NONE</b>	NONE	NONE
Sand/Dirt	scalar Visual*	NONE	<b>NONE</b>	NONE	NONE
Appearance	scalar Visual*	NORML	<b>NORML</b>	NORML	NORML
Odor	scalar Visual*	NORML	<b>NORML</b>	NORML	NORML
Emulsified Water	scalar Visual*	>2	<b>NEG</b>	NEG	NEG
Free Water	scalar Visual*		<b>NEG</b>	NEG	NEG

FLUID PROPERTIES	method	limit/base	current	history1	history2
Visc @ 40°C	cSt ASTM D7279(m)	68	<b>68.2</b>	68.3	68.3

SAMPLE IMAGES	method	limit/base	current	history1	history2
---------------	--------	------------	---------	----------	----------

Color



Bottom



**NEWFOUNDLAND POWER INC.**  
 50 DUFFY PLACE, PO BOX 8910  
 ST. JOHNS, NL  
 CA A1B 3P6  
 Contact: Paul Martin  
 pmartin@newfoundlandpower.com  
 T: (709)737-2926