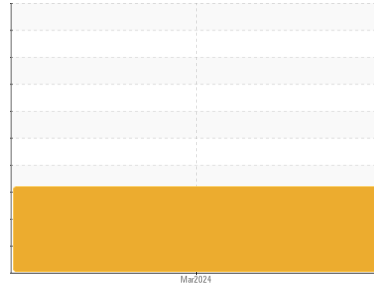




GREASE ANALYSIS

Sample Rating Trend



WEAR



Machine Id
SLT201

Component
Grease

Fluid
SHELL GADUS S5 V460 1.5 (--- GAL)

DIAGNOSIS

Recommendation

We advise that you check for visible metal particles in the grease. We recommend that you re-grease the component if this has not already been done. We recommend an early resample to monitor this condition.

Wear

PQ levels are abnormal. Moderate concentration of visible metal present. The high ferrous density (PQ) index indicates that abnormal wear is occurring. Abnormal wear is indicated.

Grease Condition

The grease is no longer serviceable as a result of the abnormal and/or severe wear.

Contaminants

There is no indication of any contamination in the grease.

SAMPLE INFORMATION

method	limit/base	current	history1	history2
Sample Number	Client Info	WC0698916	---	---
Sample Date	Client Info	14 Mar 2024	---	---
Machine Age	hrs Client Info	0	---	---
Grease Age	hrs Client Info	0	---	---
Grease Serviced	Client Info	N/A	---	---
Sample Status		ABNORMAL	---	---

CONTAMINATION

method	limit/base	current	history1	history2
Water	WC Method >0.1	NEG	---	---

WEAR METALS

method	limit/base	current	history1	history2
PQ	ASTM D8184* >200	▲ 13200	---	---
Iron	ppm ASTM D5185(m) >250	124	---	---
Chromium	ppm ASTM D5185(m) >10	0	---	---
Nickel	ppm ASTM D5185(m) >5	0	---	---
Cadmium	ppm ASTM D5185(m)	0	---	---
Titanium	ppm ASTM D5185(m)	0	---	---
Vanadium	ppm ASTM D5185(m)	0	---	---
Lead	ppm ASTM D5185(m) >25	0	---	---
Copper	ppm ASTM D5185(m) >75	3	---	---
Tin	ppm ASTM D5185(m) >5	0	---	---
Silver	ppm ASTM D5185(m) >5	0	---	---

ADDITIVES

method	limit/base	current	history1	history2
Boron	ppm ASTM D5185(m) 220	126	---	---
Magnesium	ppm ASTM D5185(m) 0	2	---	---
Manganese	ppm ASTM D5185(m) 0	<1	---	---
Molybdenum	ppm ASTM D5185(m) 0	0	---	---
Phosphorus	ppm ASTM D5185(m) 150	86	---	---
Zinc	ppm ASTM D5185(m) 100	82	---	---
Antimony	ppm ASTM D5185(m) 2	<1	---	---

THICKENER/SOAP

method	limit/base	current	history1	history2
Aluminum	ppm ASTM D5185(m) 0	<1	---	---
Barium	ppm ASTM D5185(m) 0	<1	---	---
Calcium	ppm ASTM D5185(m) 100	86	---	---
Sodium	ppm ASTM D5185(m) 5	8	---	---
Lithium	ppm ASTM D5185(m) 475	345	---	---
Sulfur	ppm ASTM D5185(m) 750	469	---	---

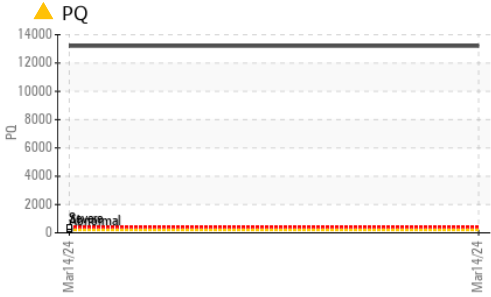
CONTAMINANTS

method	limit/base	current	history1	history2
Silicon	ppm ASTM D5185(m) >150	<1	---	---
Potassium	ppm ASTM D5185(m)	136	---	---

GREASE CONDITION

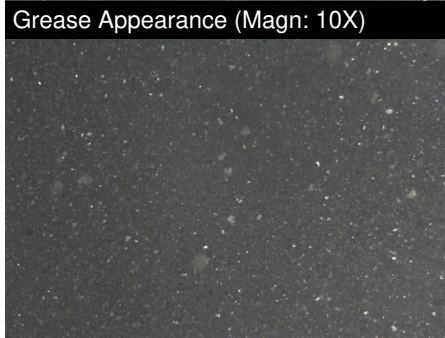
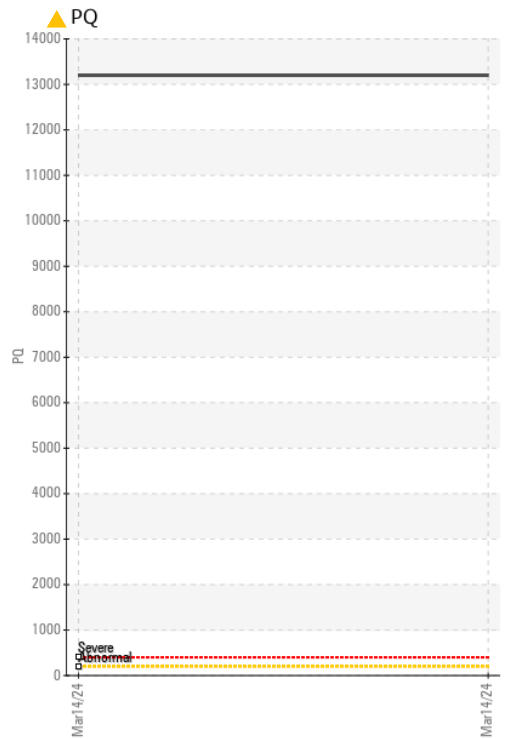
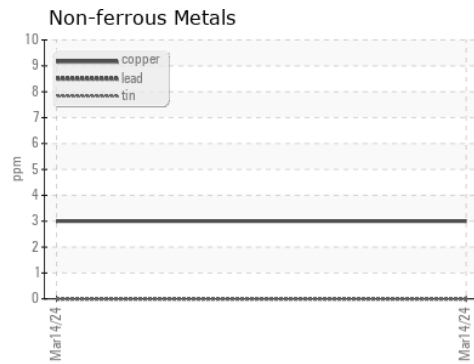
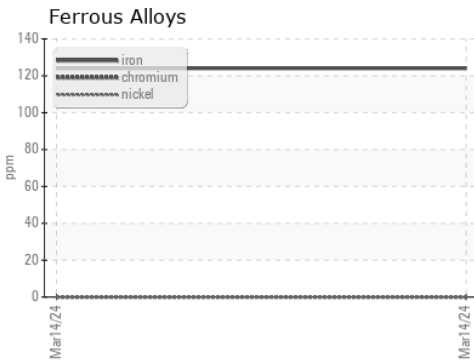
method	limit/base	current	history1	history2
Grease Color	Visual* White	Grey	---	---
Texture	In-house*	Buttery	---	---
NLGI Consistency	NLGI Scale SKF Method* 1.5	2-3	---	---

GREASE ANALYSIS



SAMPLE IMAGES	method	limit/base	current	history1	history2
Color				no image	no image
Bottom				no image	no image
PrtFilter				no image	no image

GRAPHS



Laboratory : WearCheck - C8-1175 Appleby Line, Burlington, ON L7L 5H9
Sample No. : WC0698916
Lab Number : 02624798
Unique Number : 5749917
Test Package : GRS 1 (Additional Tests: BottomAnalysis)

ALGOMA STEEL INC. - STORES DEPT.
 301 WALLACE TERRACE
 SAULT STE MARIE, ON
 CA P6C 1K8
 Contact: Algoma Reliability
 algomareliability@algoma.com
 T: (705)206-1059
 F: (705)945-3585

To discuss this sample report, contact Customer Service at 1-800-268-2131.
 Test denoted (*) outside scope of accreditation, (m) method modified, (e) tested at external lab.
 Validity of results and interpretation are based on the sample and information as supplied.