



FILTER DEBRIS ANALYSIS

Sample Rating Trend



WEAR PARTICLES



Machine Id

06126835

Component

Filter

Fluid

{not provided} (--- GAL)

DIAGNOSIS

▲ Recommendation

Diagnostician's Note: The filter contained a moderate amount of ferrous black oxides (these are particles that have undergone extreme heat so they have a thick oxide layer and therefore appear black). It's not likely that these are wear particles but more likely a contaminant getting into the system from a nearby industrial process. If that is the case, recommend installing a rated air breather and checking seal points on the machinery.

▲ Wear Particles

Wear particle analysis indicates that the ferrous black oxides particles are abnormal.

Contaminants

The filter contained only normal levels of contaminants, and debris. All filter contaminant levels are normal.

SAMPLE INFORMATION

	method	limit/base	current	history1	history2
Sample Number	Client Info		PP	---	---
Sample Date	Client Info		25 Mar 2024	---	---
Machine Age	hrs	Client Info	0	---	---
Oil Age	hrs	Client Info	0	---	---
Oil Changed	Client Info		N/A	---	---
Sample Status			ABNORMAL	---	---

CONTAMINATION

	method	limit/base	current	history1	history2
Water	WC Method		NEG	---	---

FILTER WEAR PARTICLES

	method	limit/base	current	history1	history2
Ferrous Rubbing	Scale 0-10 ASTM D7684*		2		
Ferrous Sliding	Scale 0-10 ASTM D7684*				
Ferrous Cutting	Scale 0-10 ASTM D7684*				
Ferrous Rolling	Scale 0-10 ASTM D7684*				
Ferrous Break-in	Scale 0-10 ASTM D7684*				
Ferrous Spheres	Scale 0-10 ASTM D7684*				
Ferrous Black Oxides	Scale 0-10 ASTM D7684*		5		
Ferrous Red Oxides	Scale 0-10 ASTM D7684*				
Ferrous Corrosive	Scale 0-10 ASTM D7684*				
Ferrous Other	Scale 0-10 ASTM D7684*				
Nonferrous Rubbing	Scale 0-10 ASTM D7684*		1		
Nonferrous Sliding	Scale 0-10 ASTM D7684*				
Nonferrous Cutting	Scale 0-10 ASTM D7684*				
Nonferrous Rolling	Scale 0-10 ASTM D7684*		1		
Nonferrous Other	Scale 0-10 ASTM D7684*				

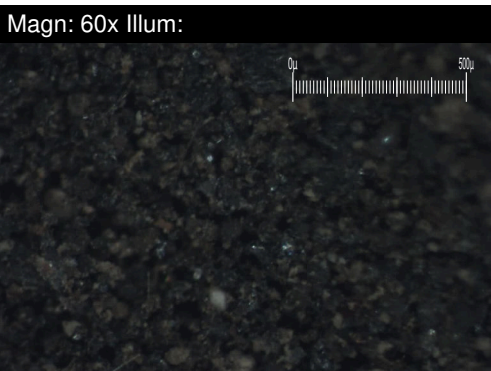
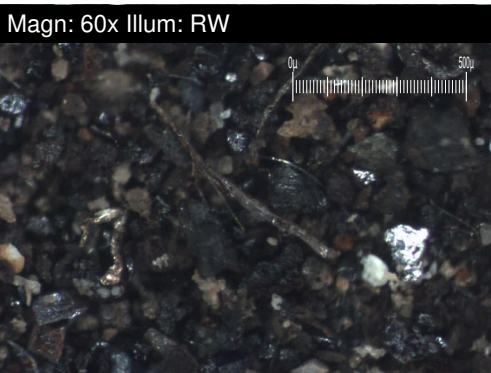
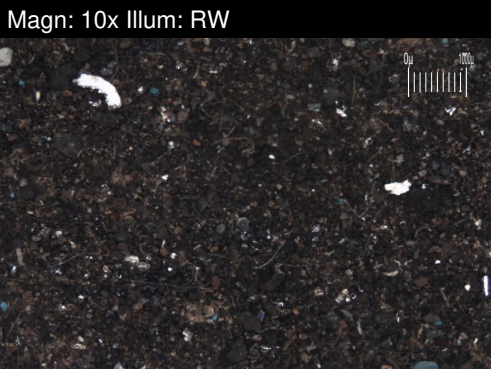
FILTER CONTAMINANTS

	method	limit/base	current	history1	history2
Sand/Dirt	Scale 0-10 ASTM D7684*		3		
Fibres	Scale 0-10 ASTM D7684*		2		
Spheres	Scale 0-10 ASTM D7684*				
Other	Scale 0-10 ASTM D7684*				
Patch Weight	mg	ASTM D7684*	252	---	---

SAMPLE IMAGES

	method	limit/base	current	history1	history2
Color				no image	no image
Bottom				no image	no image

Machine Id
06126835
Component
Filter
Fluid
{not provided} (--- GAL)



WEAR

Wear particle analysis indicates that the ferrous black oxides particles are abnormal.